

**Results of Investigation on Upper Part of S/C  
(Suppression Chamber) of Unit 1 at  
Fukushima Daiichi NPS  
(outside around west/south side)**

**May 30, 2014**

**Tokyo Electric Power Company**



**東京電力**

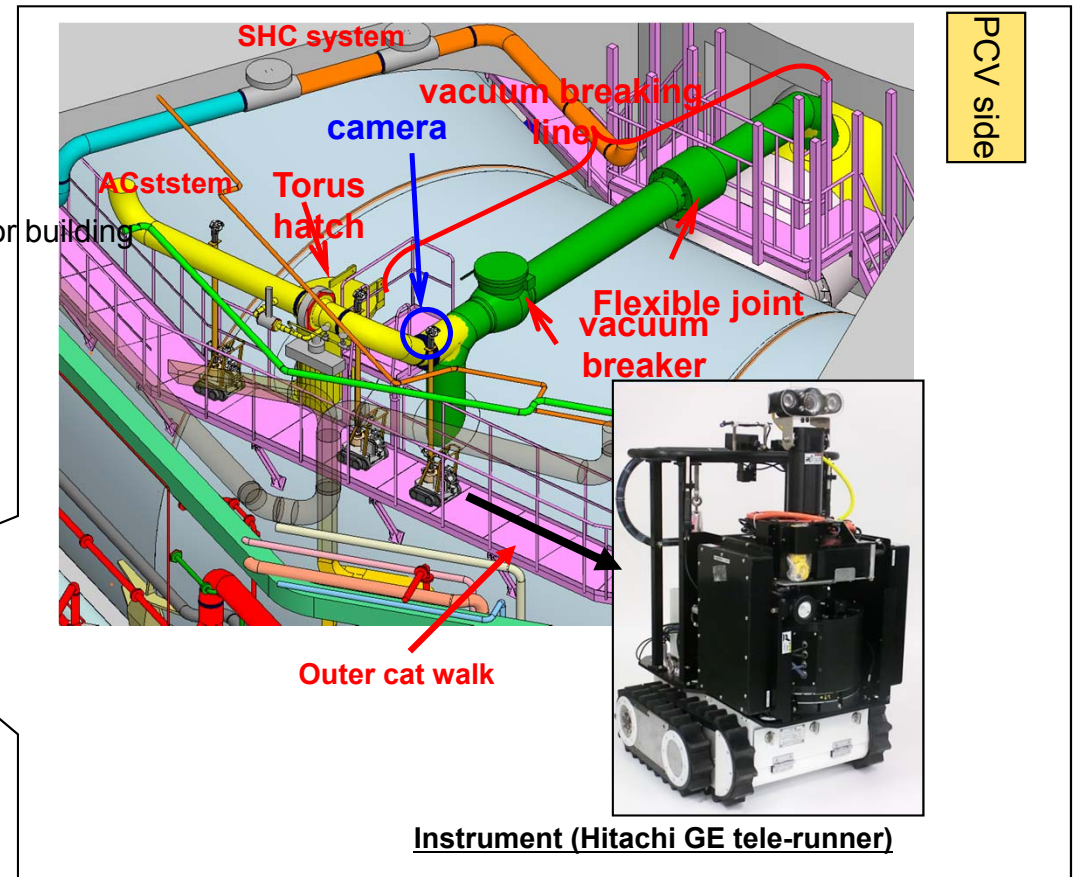
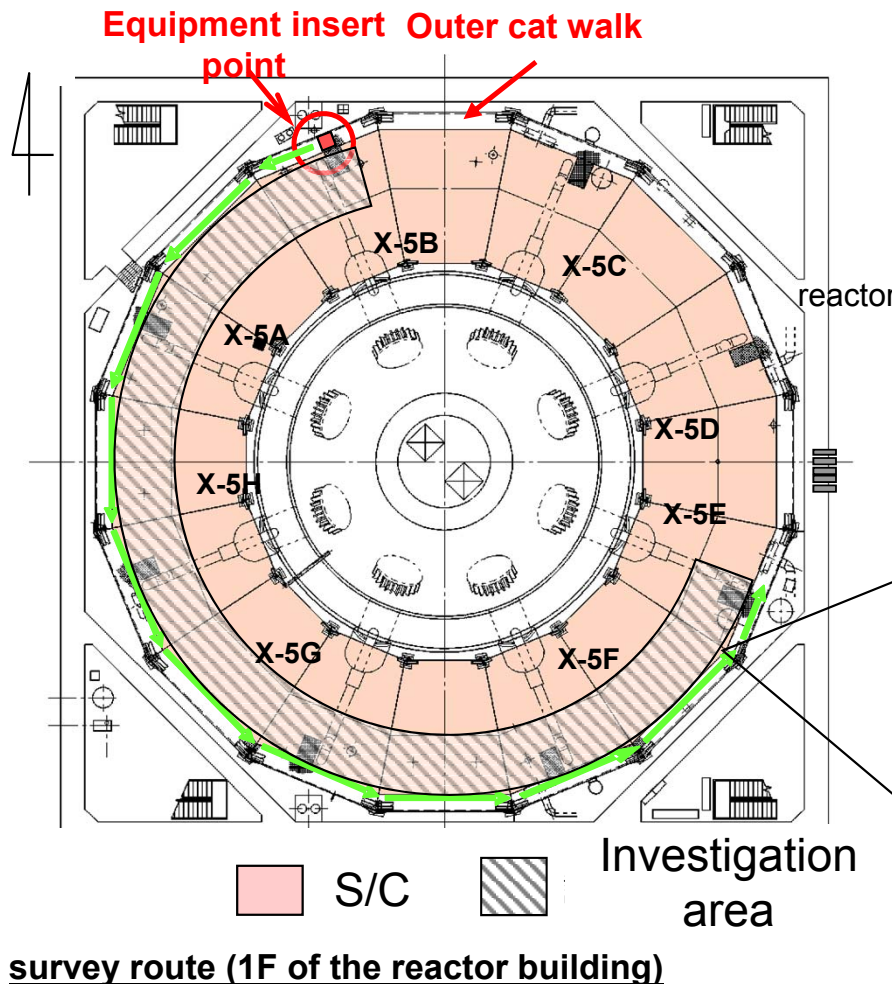
**IRID**

---

# Summary

Equipment (under development as subsidized project of Agency for Natural Resources and Energy) for investigation on upper part of S/C was put in from the drilled hole in northwest area of the first floor of reactor building of Unit 1, and investigation from outer cat walk was conducted.

- Outside of upper part of S/C \* west and south side of outside on May 30





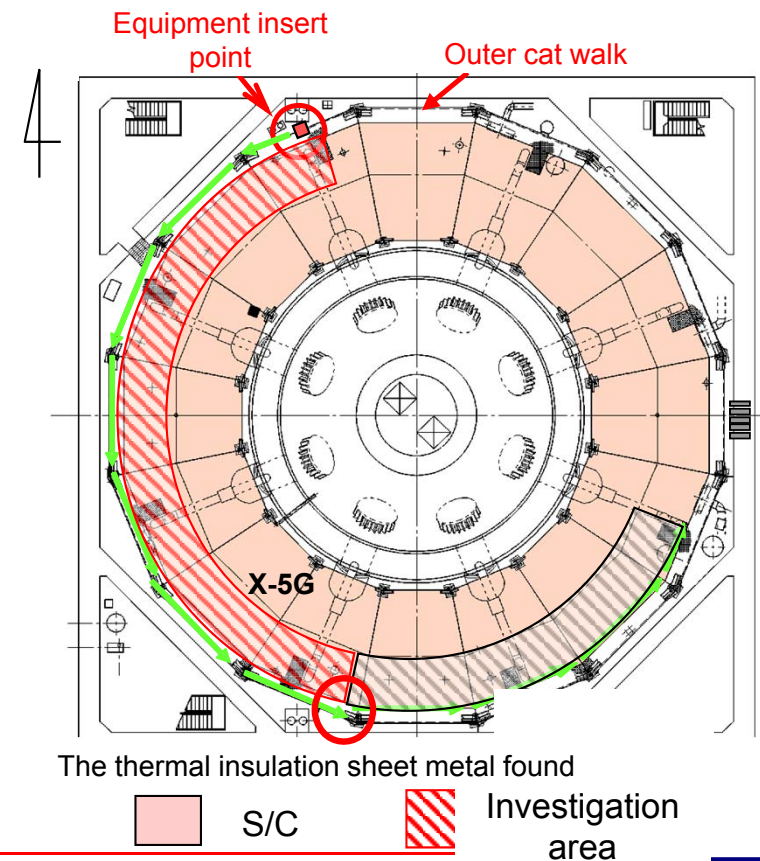
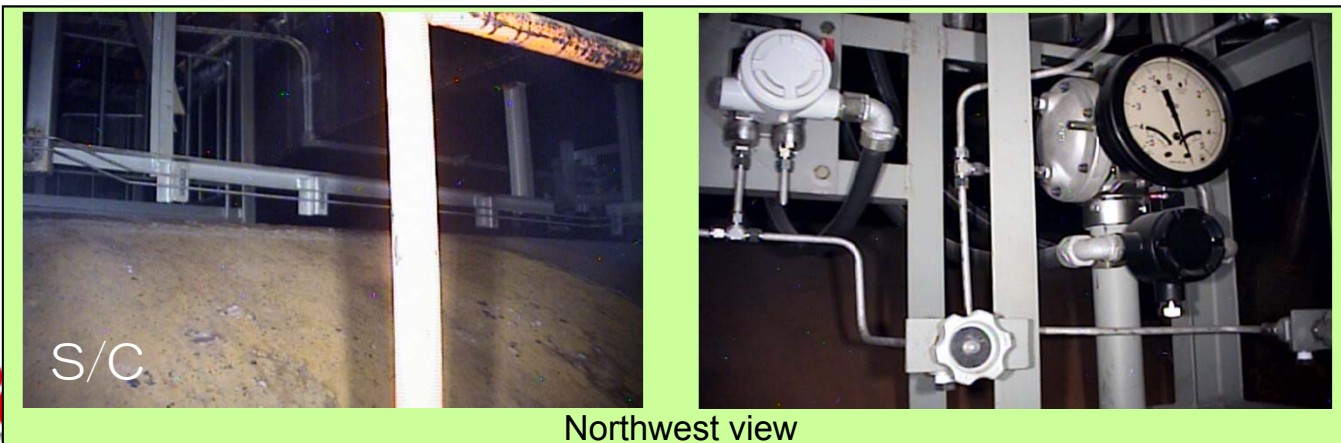
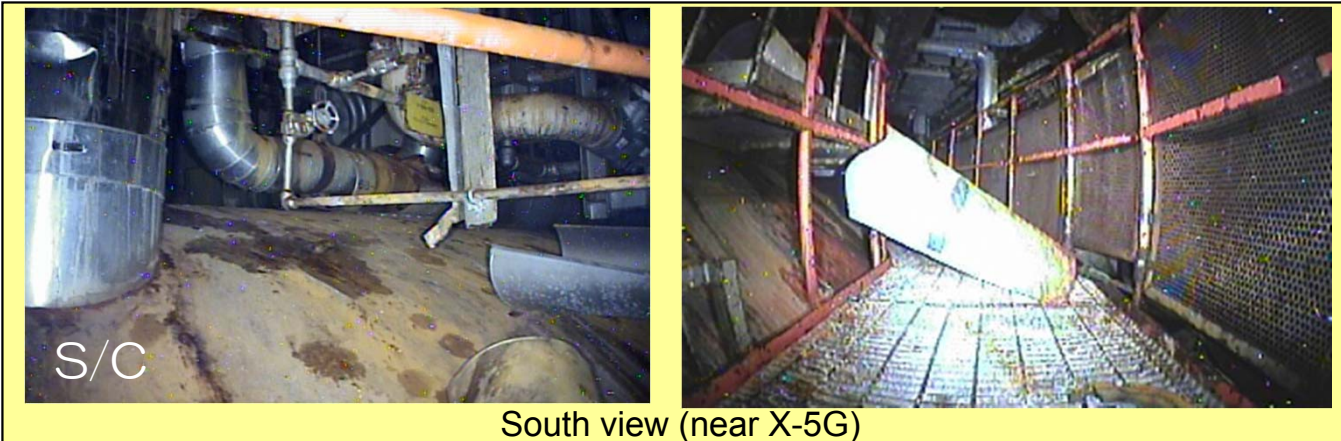
# Results

## ■ Outline

- As thermal insulation sheet metal was dropped and occupied the south cat walk (near X-5G), we investigated on from northwest to south.

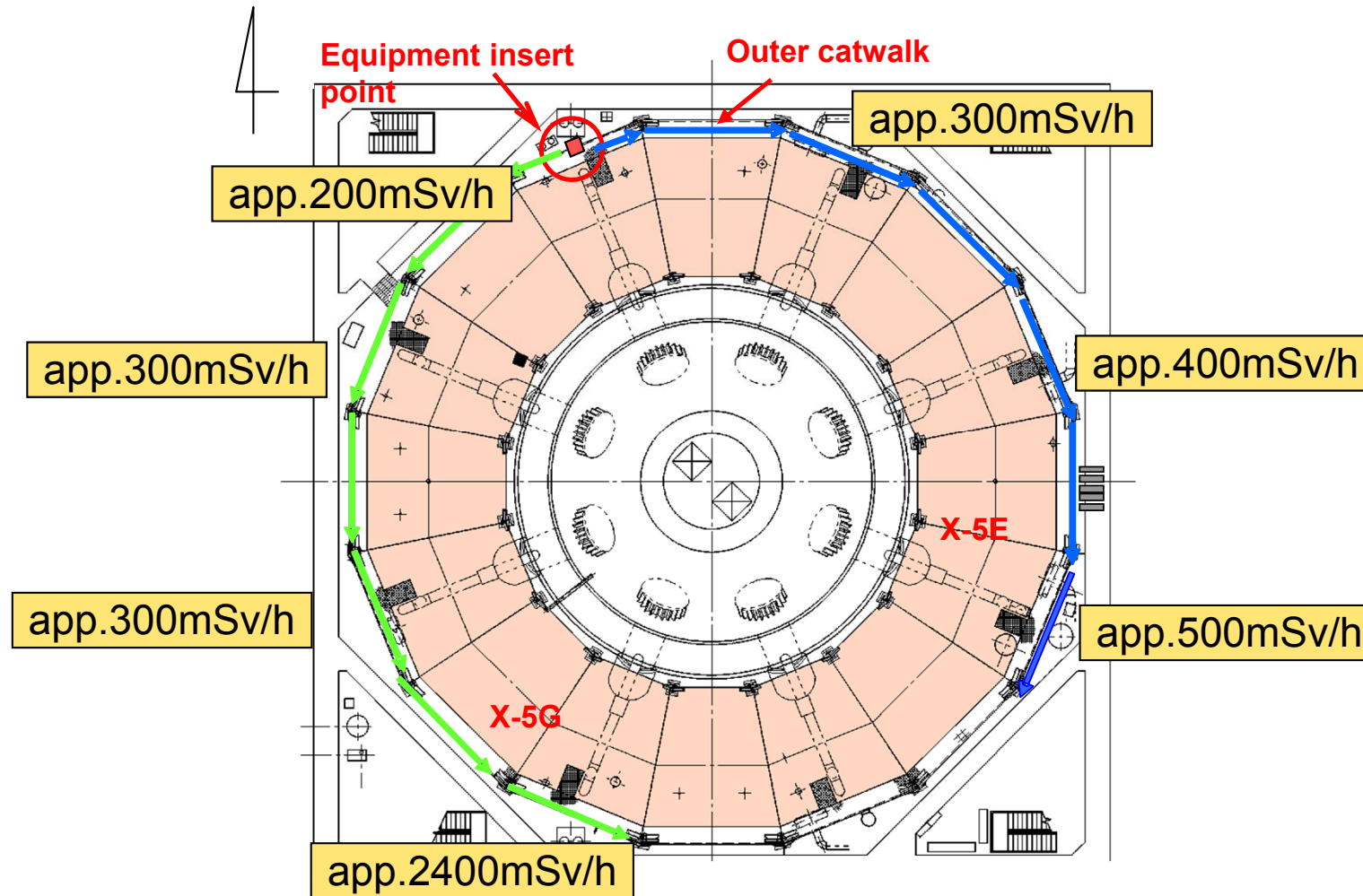
## ■ Results

- No leakage was found in the area from northwest to south.
- The pipes around X-5G were more dirty than the other area.
- Increase of radiation dose was confirmed near X-5G.



# Results

- Distribution of Radiation dosage in torus cells (measured on catwalk)



# Summary

<Results of investigation on May 27/30>

- Leakage from protective cover of X-5 vacuum breaking line was confirmed. Verifying volume of the leakage will be examined.
- As to executing investigation on south-southeast (near X-5F), the necessary to robot investigation (clockwise) after studying these images, then

<reference> actual process

