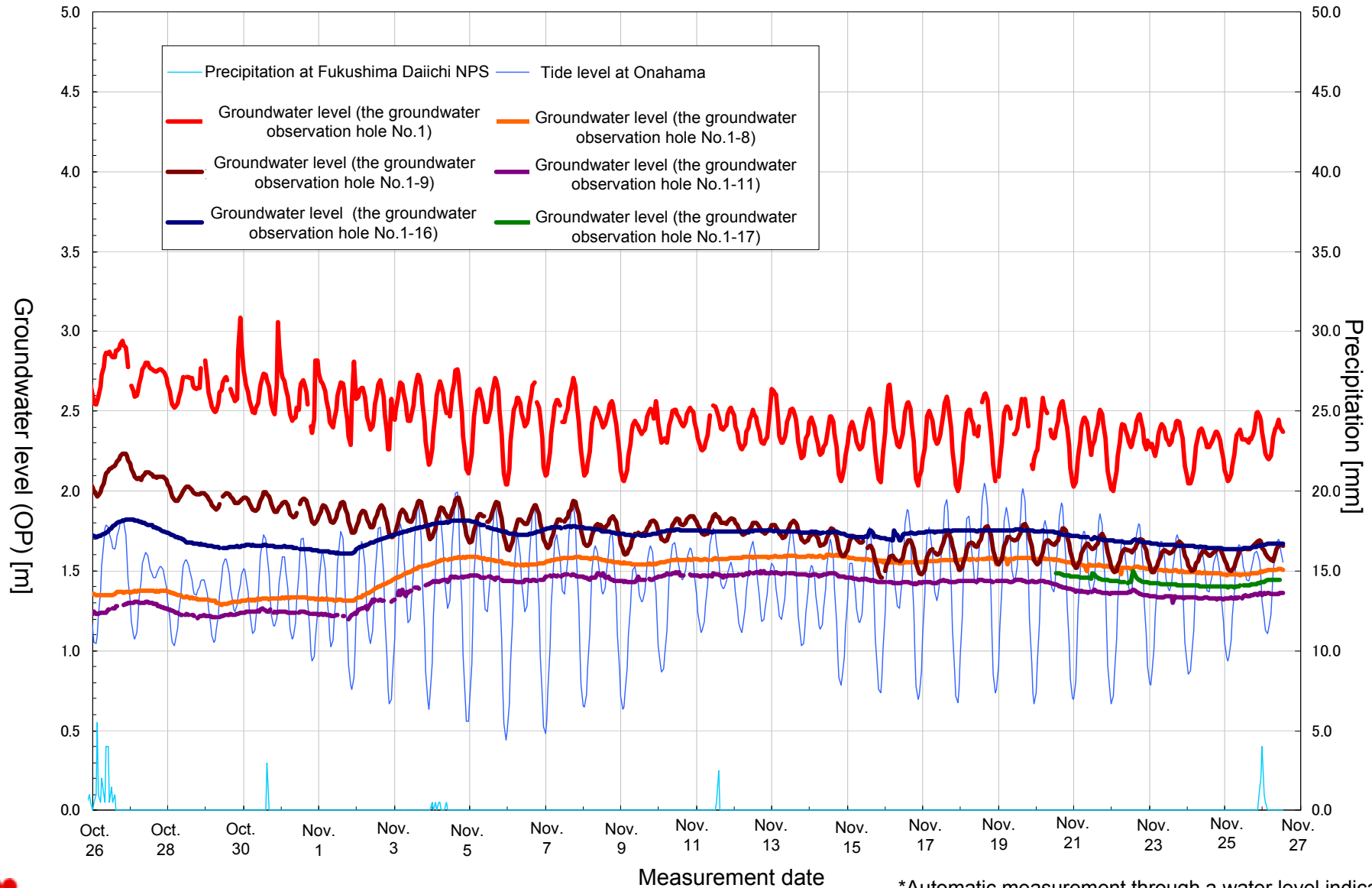


The seawall area at Fukushima Daiichi NPS

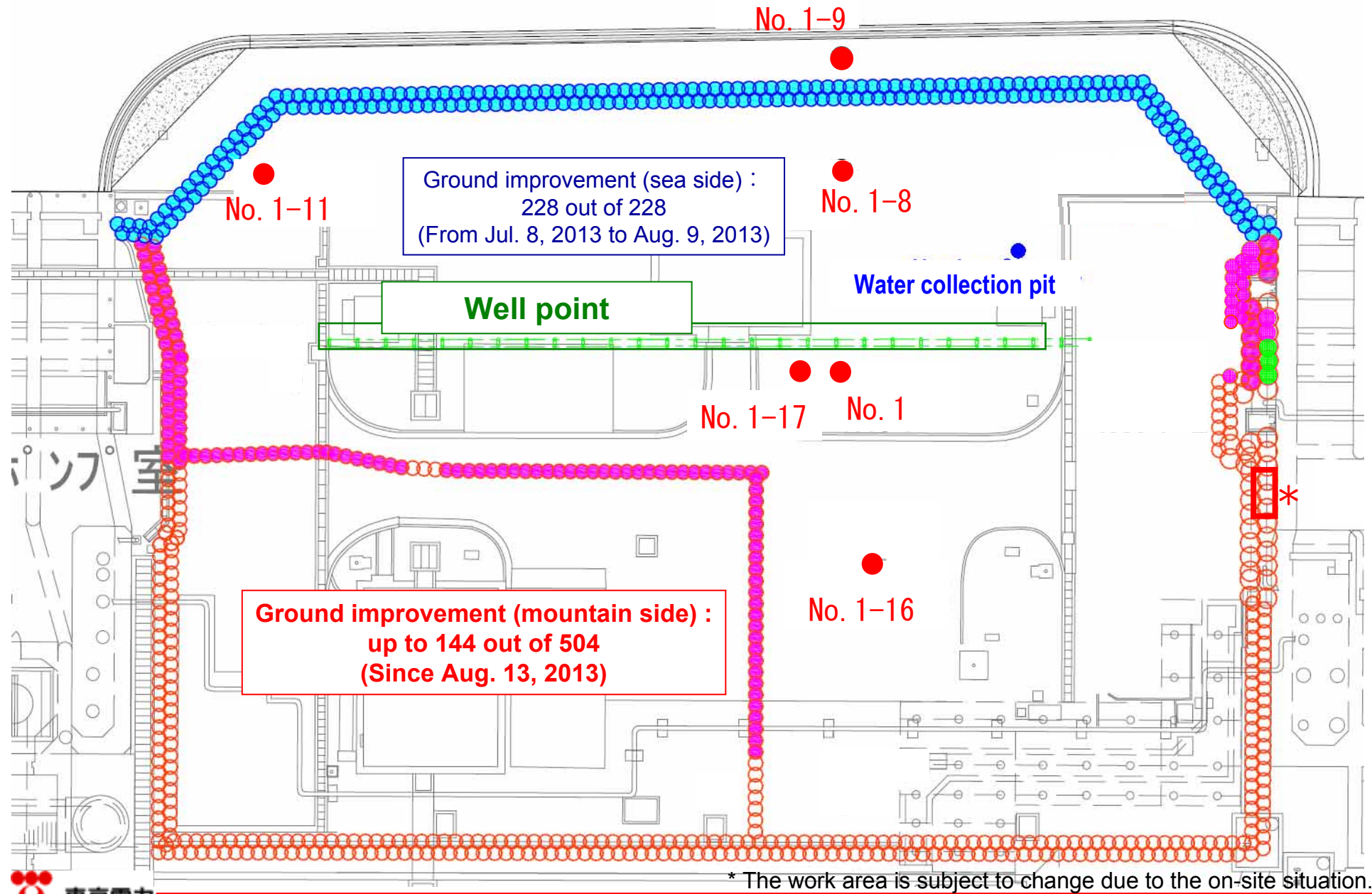
<Reference>
November 27, 2013
Tokyo Electric Power Company

Movement in groundwater (Between Unit 1 and 2: From Oct. 26 to Nov. 26)

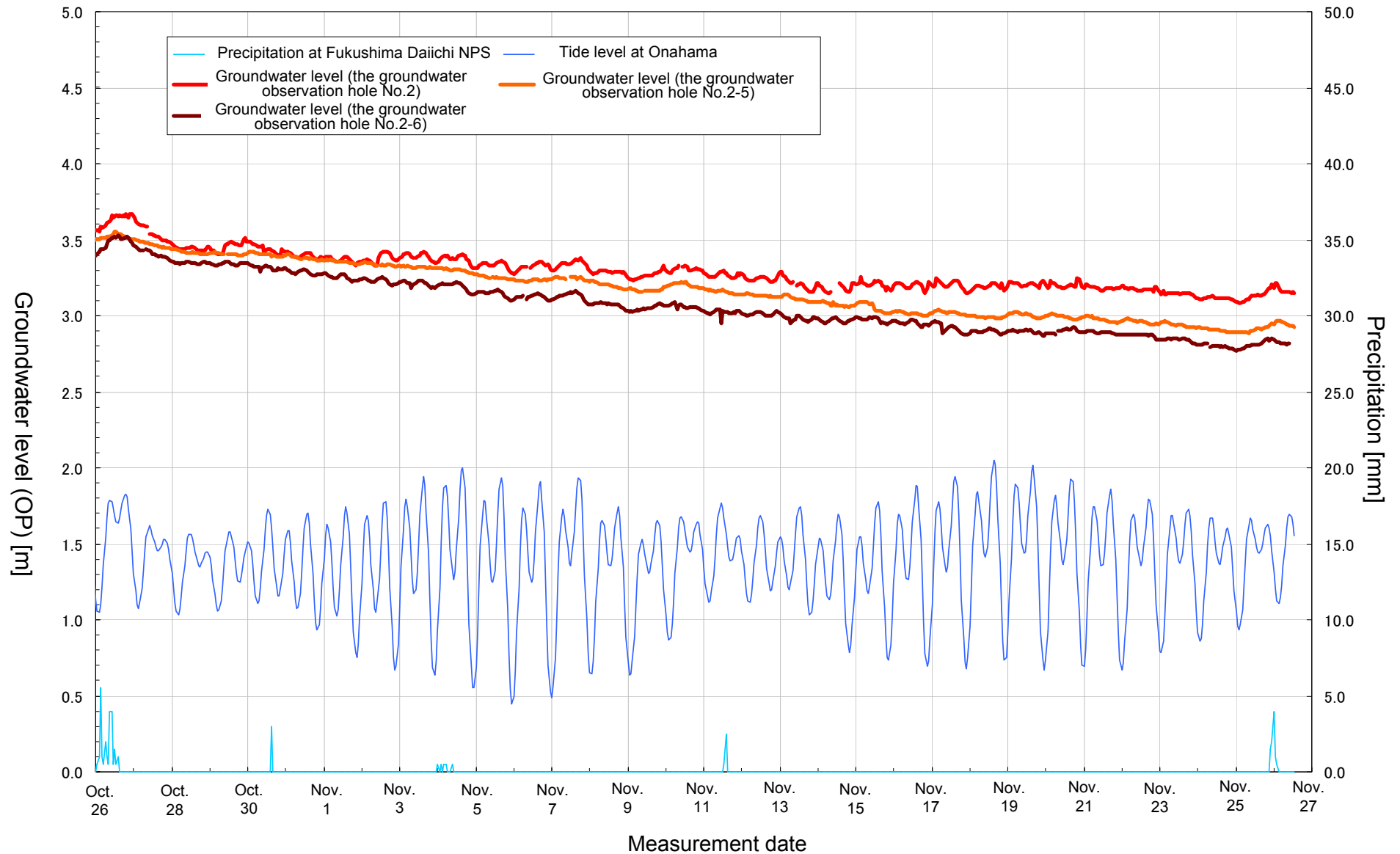


*Automatic measurement through a water level indication

Progress in the ground improvement work between Unit 1 and 2 (As of in the morning on Nov. 27)

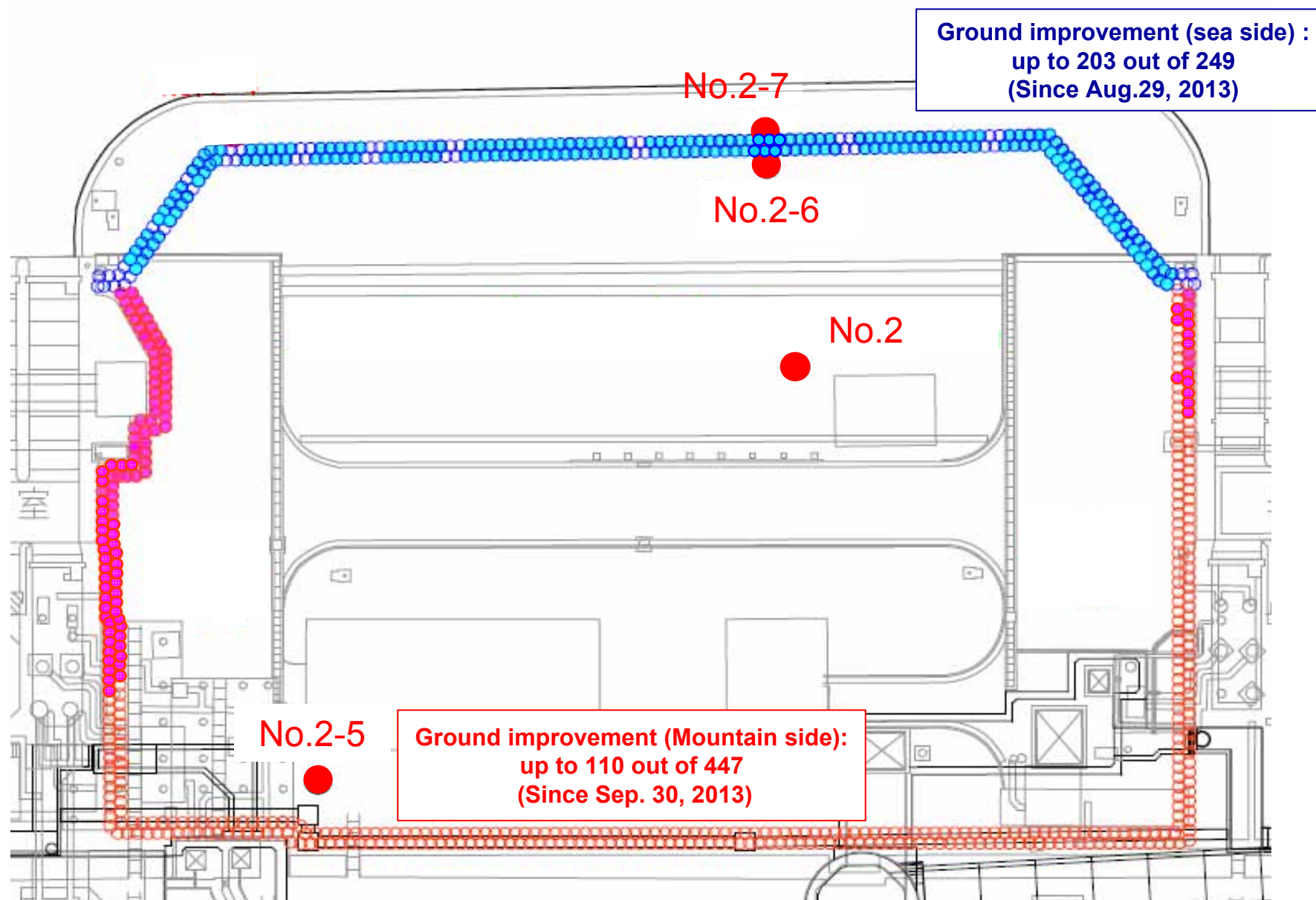


Movement in groundwater (Between Unit 2 and 3: From Oct. 26 to Nov. 26)



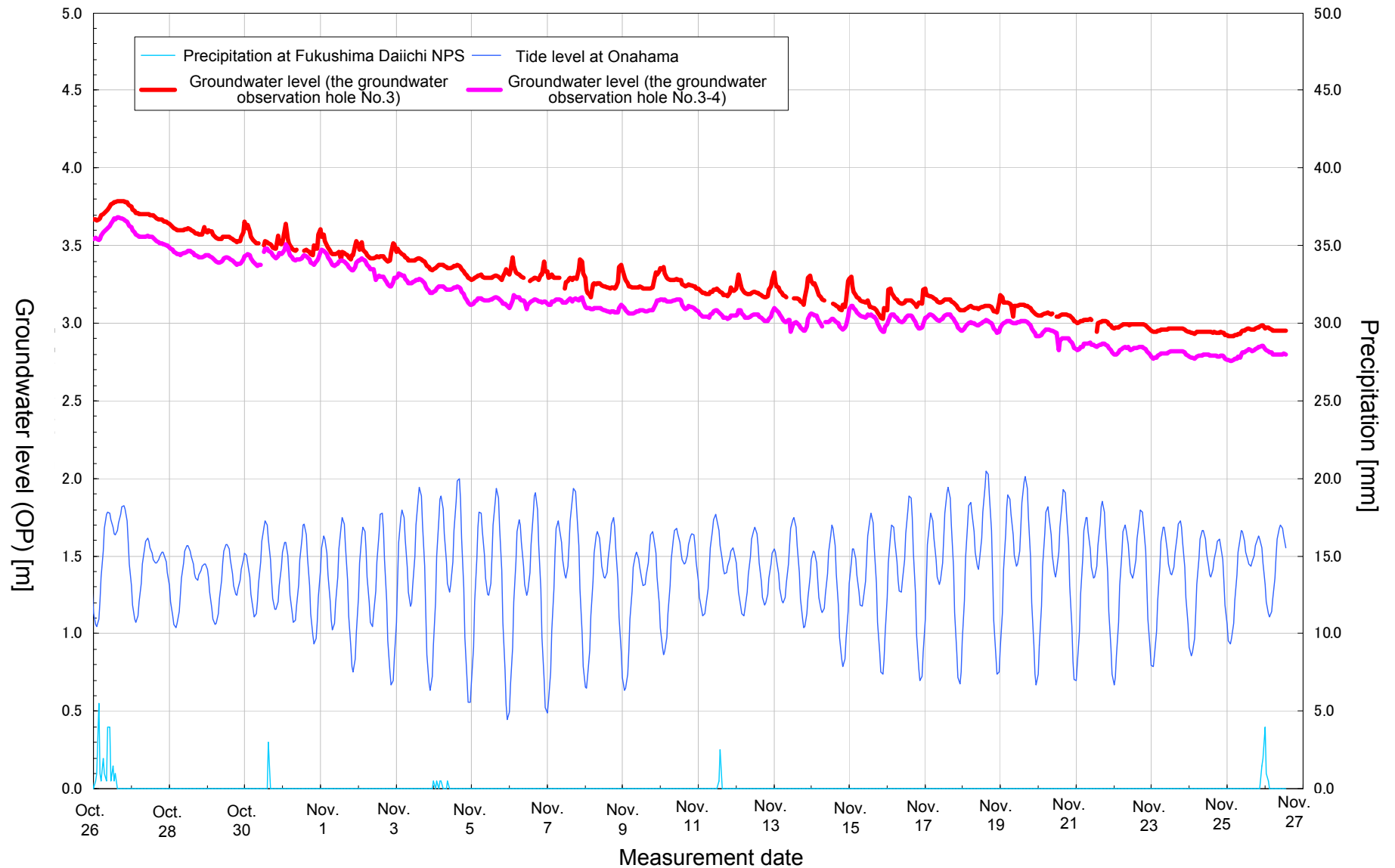
*Automatic measurement through a water level indication

Progress in the ground improvement work between Unit 2 and 3 (As of in the morning on Nov. 27)



* The work area is subject to change due to the on-site situation.

Movement in groundwater (Between Unit 3 and 4: From Oct. 26 to Nov. 26)

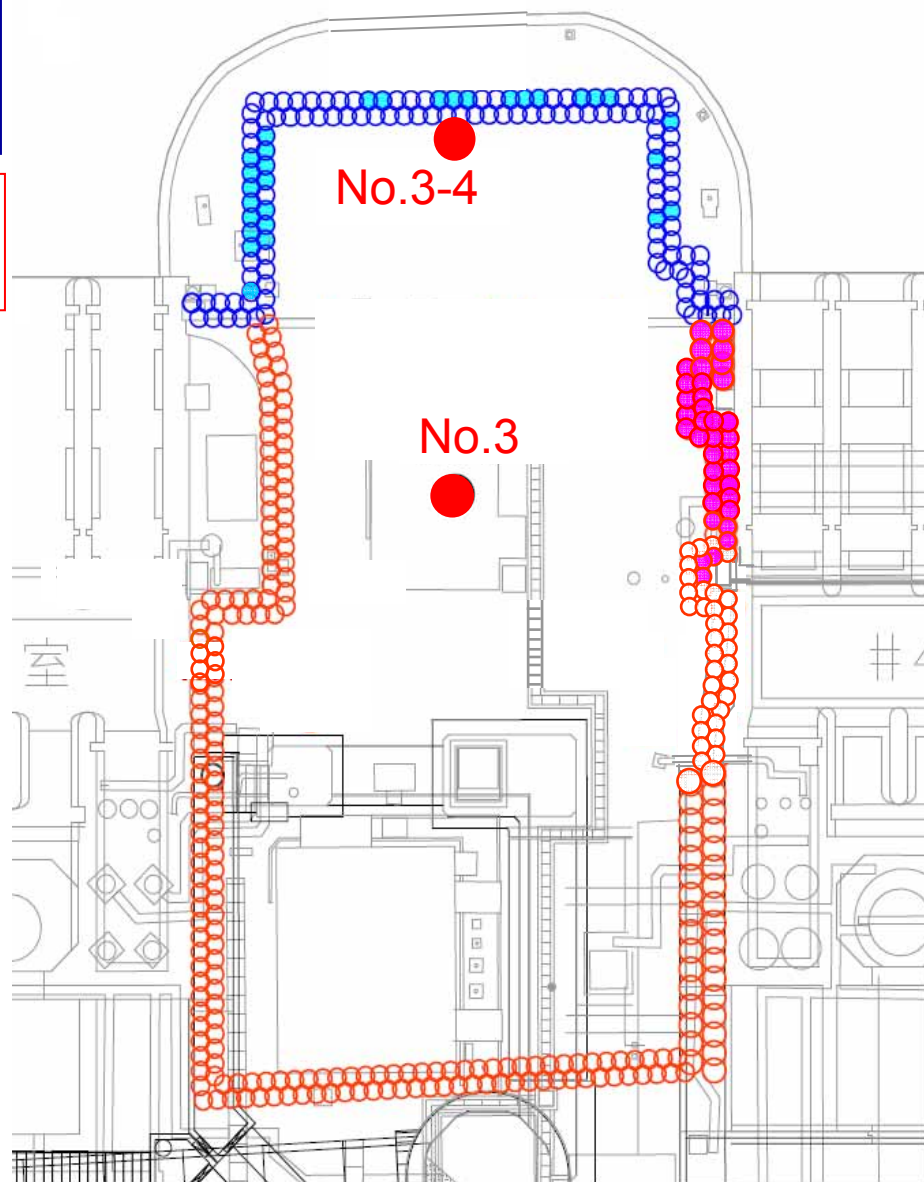


*Automatic measurement through a water level indication

Progress in the ground improvement work between Unit 3 and 4 (As of in the morning on Nov. 27)

Ground improvement (sea side):
up to 30 out of 132
(Since Aug. 23, 2013)

Ground improvement (mountain side):
up to 36 out of 273
(Since Oct. 19, 2013)



* The work area is subject to change due to the on-site situation.