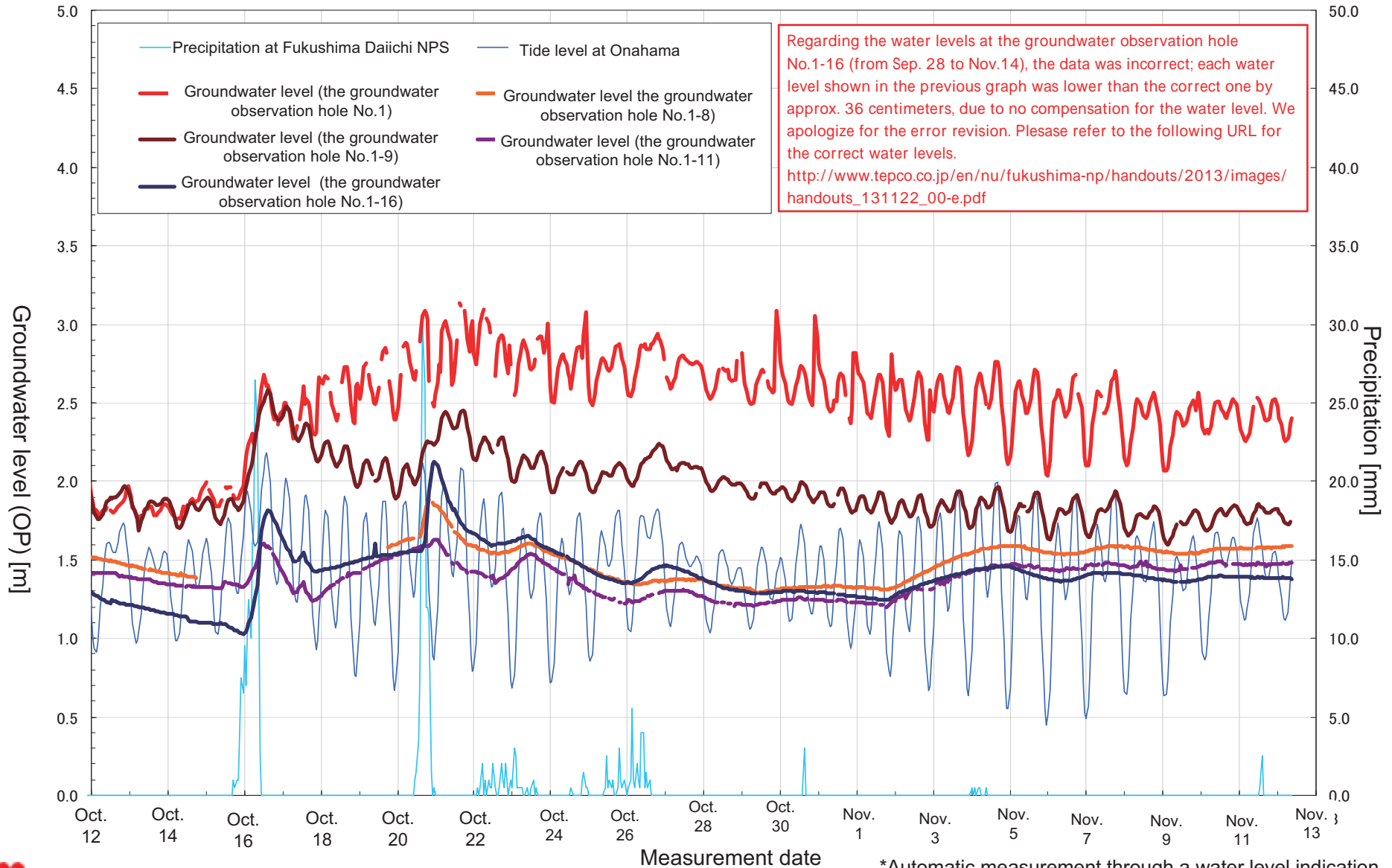


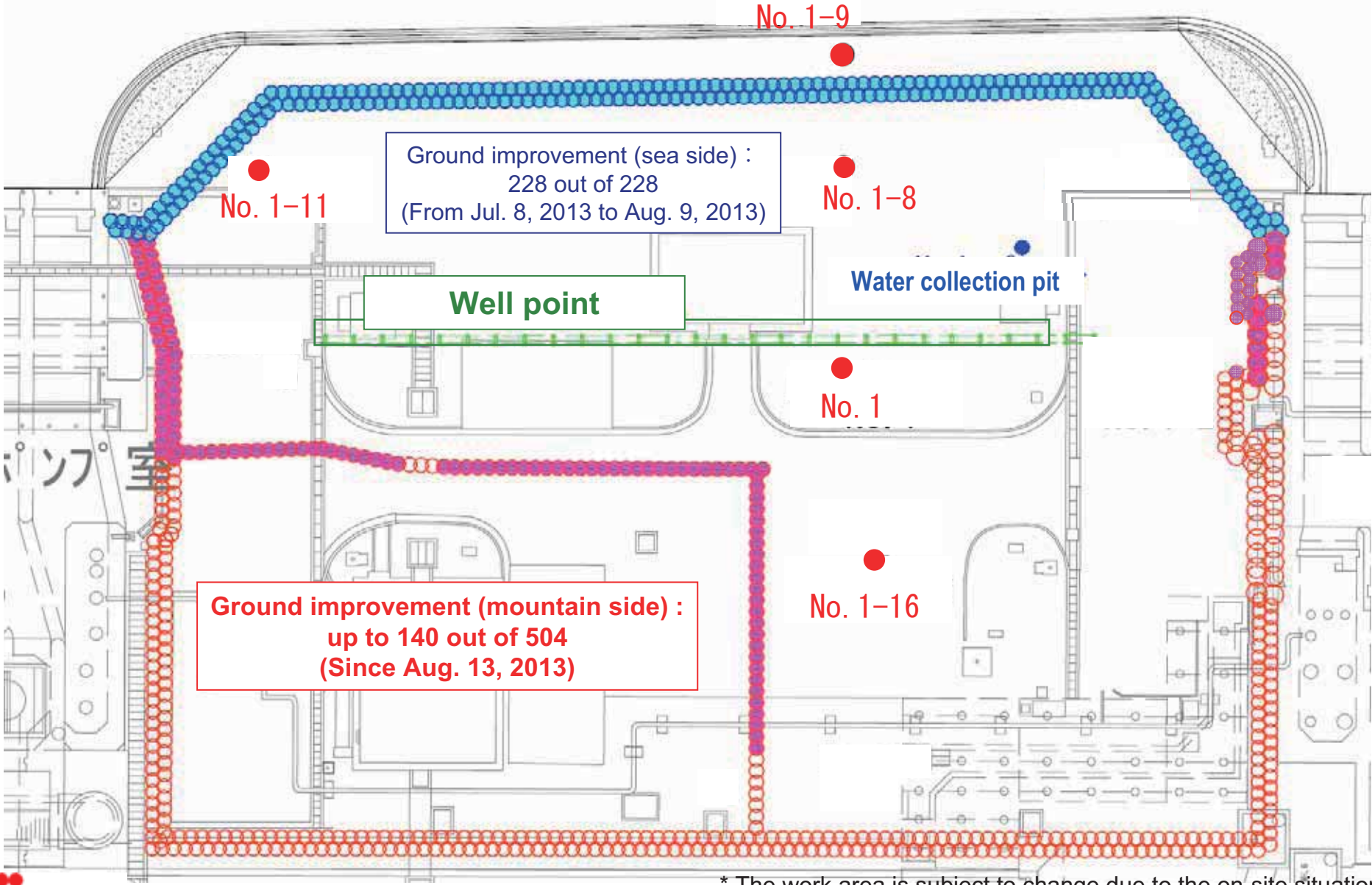
# The seawall area at Fukushima Daiichi NPS

<Reference>  
November 13, 2013  
Tokyo Electric Power Company

## Movement in groundwater (Between Unit 1 and 2: From Oct. 12 to Nov. 12)

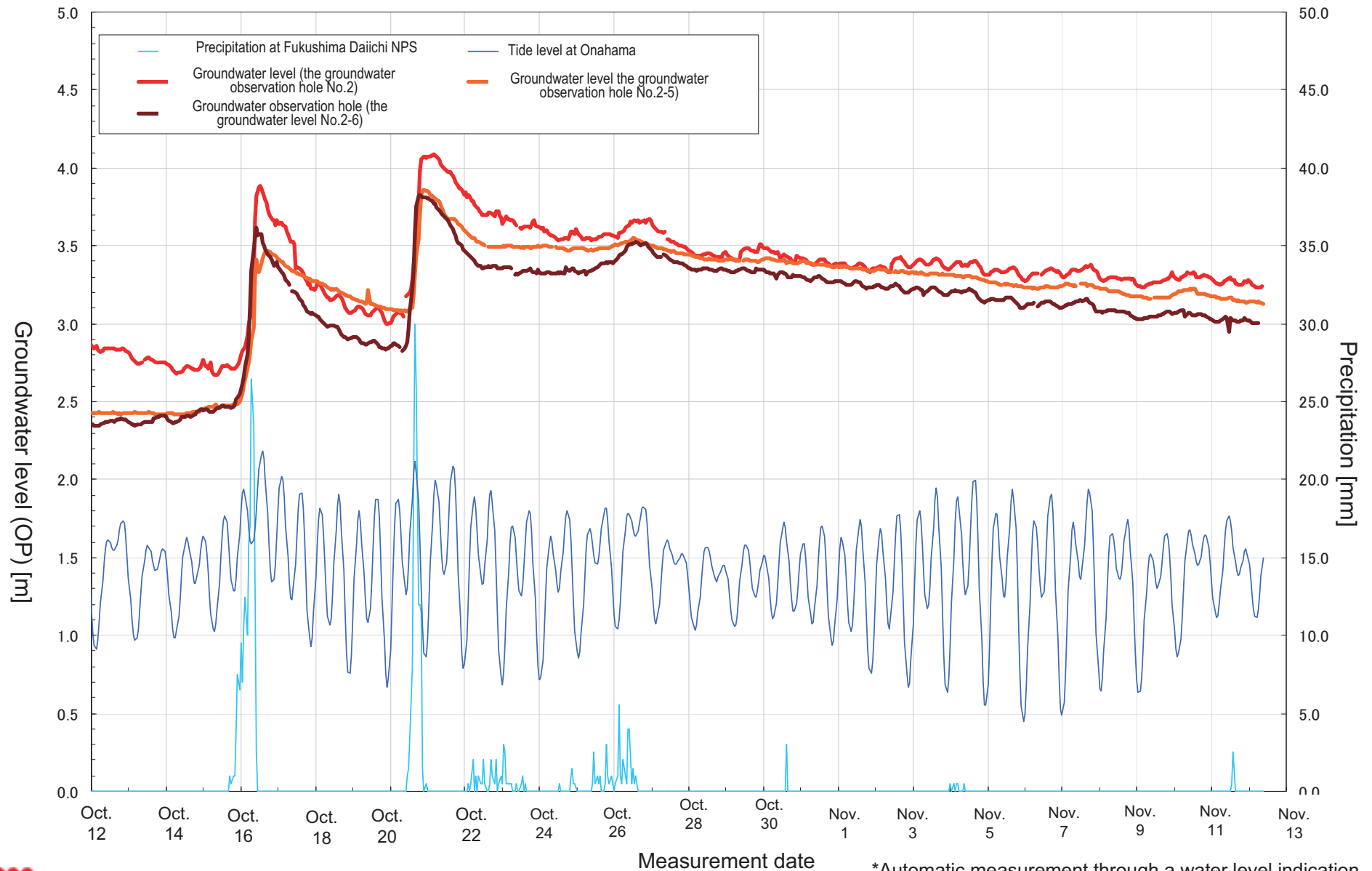


# Progress in the ground improvement work between Unit 1 and 2 (As of in the morning on November 13)



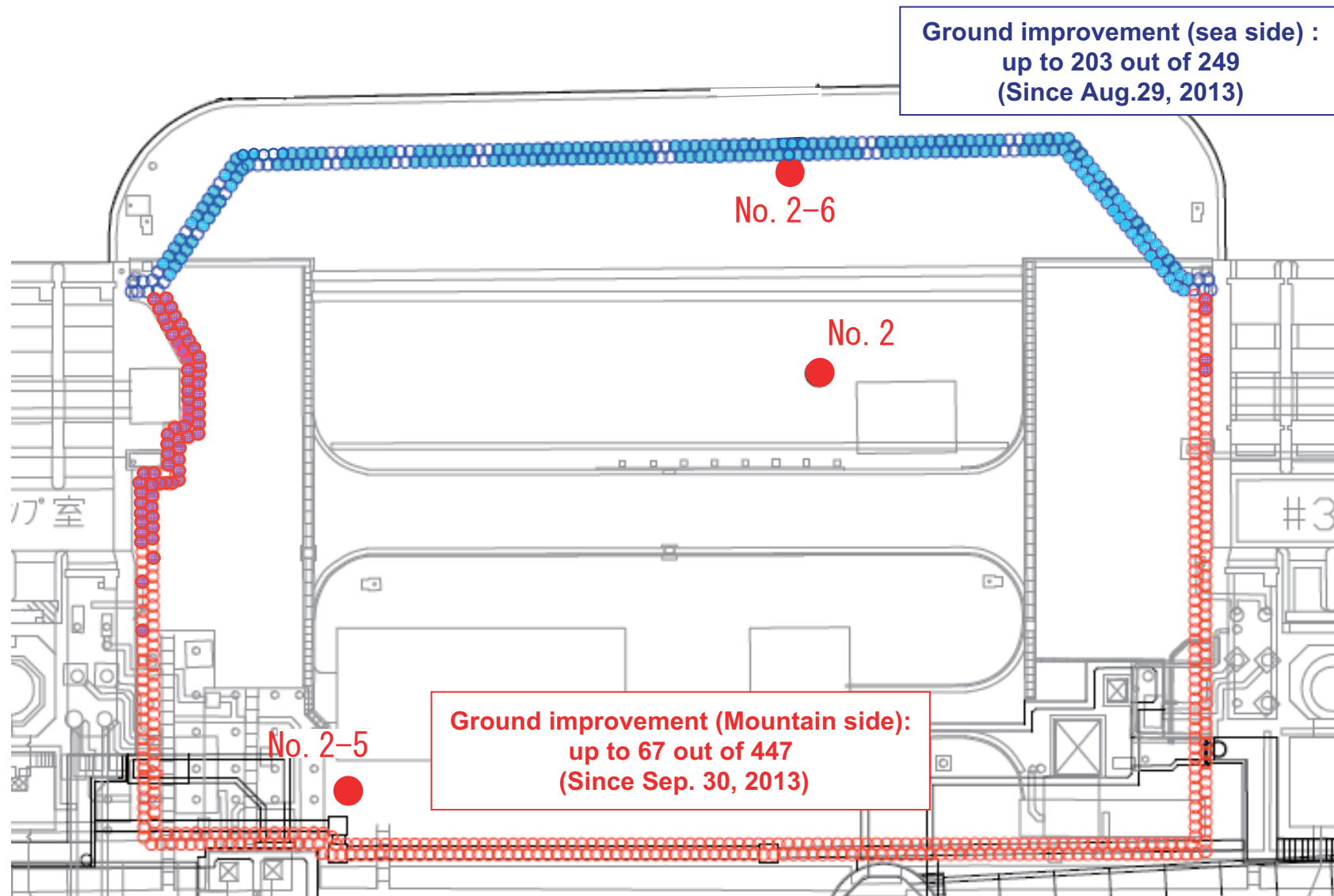
\* The work area is subject to change due to the on-site situation.

# Movement in groundwater (Between Unit 2 and 3: From Oct. 12 to Nov. 12)



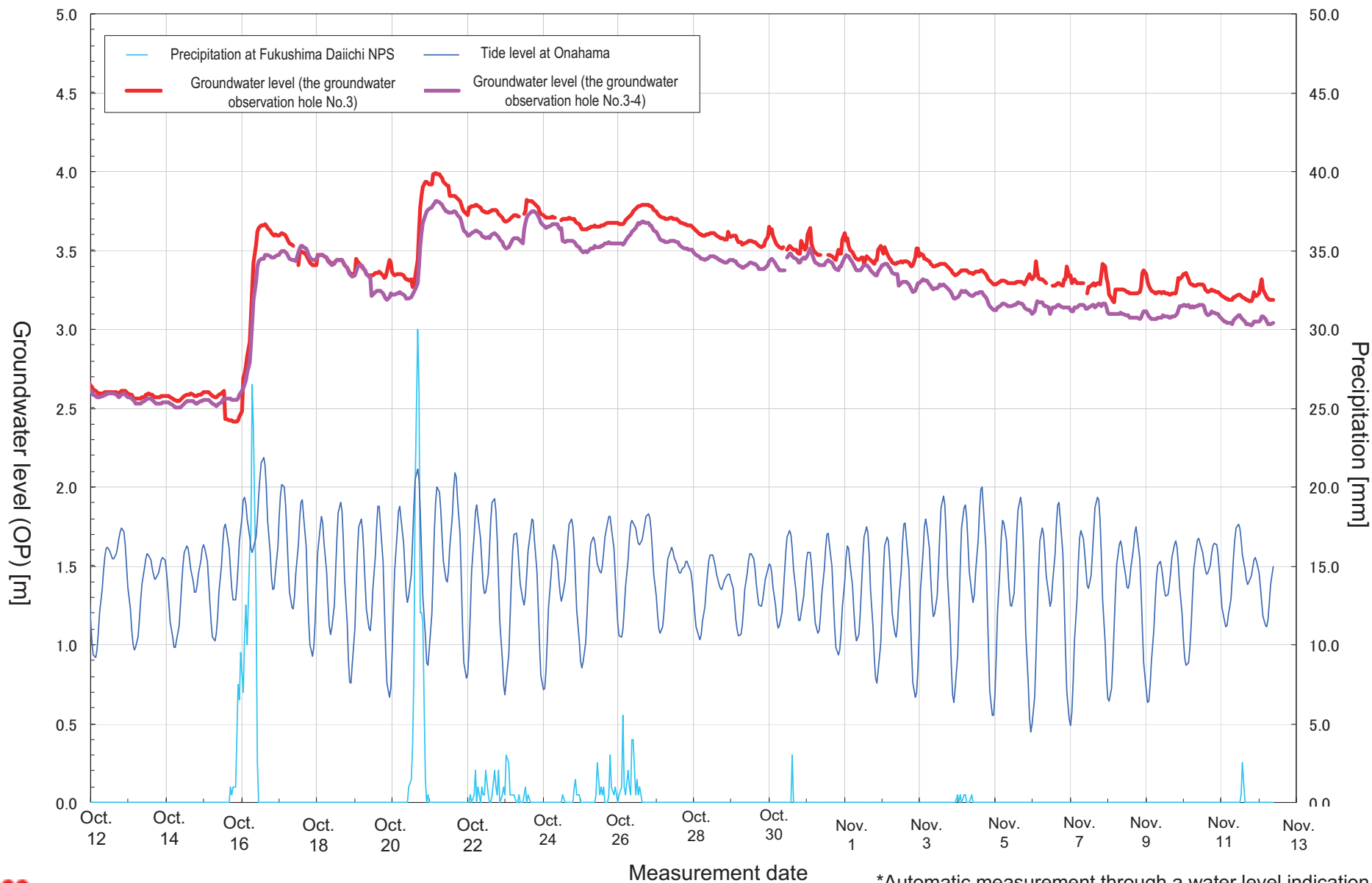
\*Automatic measurement through a water level indication

# Progress in the ground improvement work between Unit 2 and 3 (As of in the morning on November 13)



\* The work area is subject to change due to the on-site situation.

# Movement in groundwater (Between Unit 3 and 4: From Oct. 12 to Nov. 12)



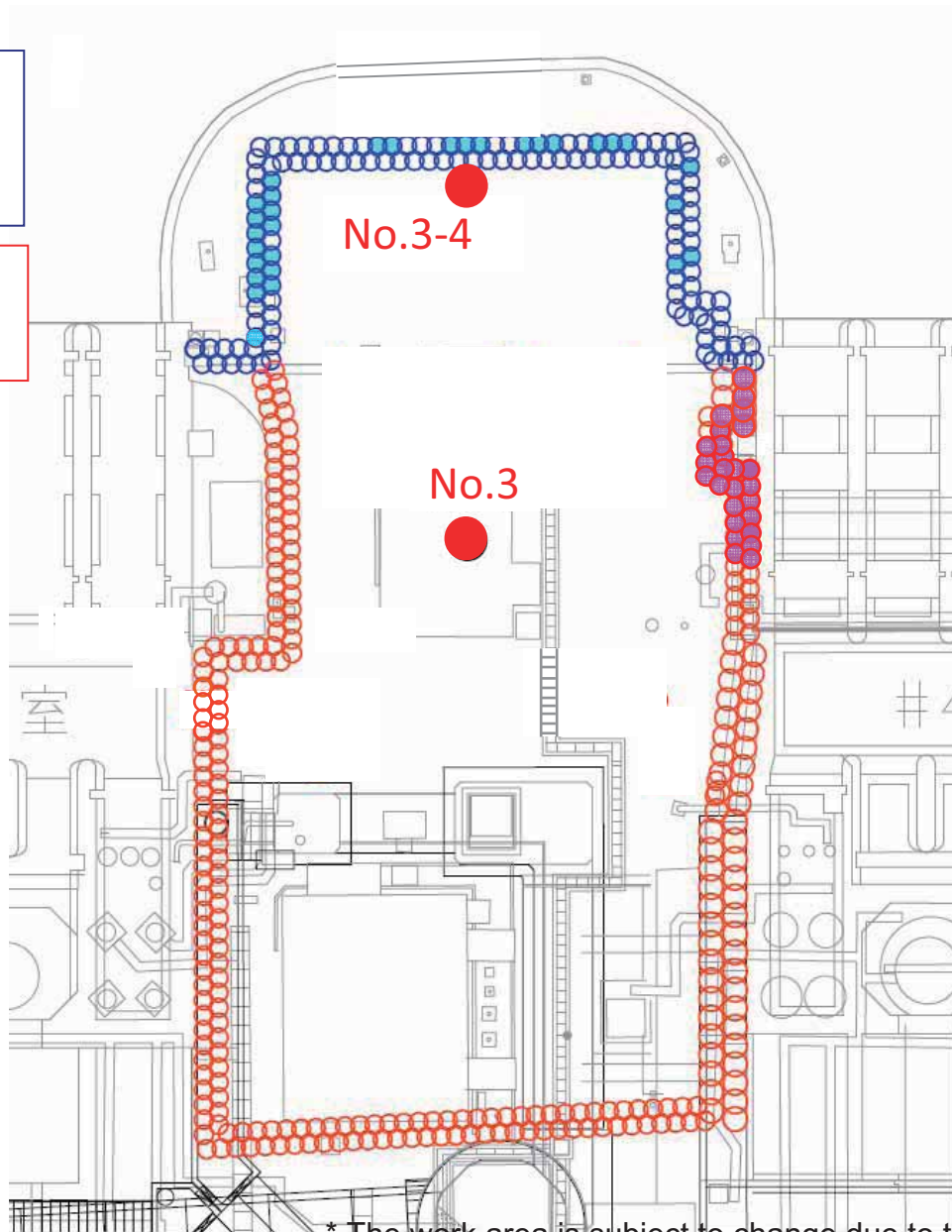
\*Automatic measurement through a water level indication



## Progress in the ground improvement work between Unit 3 and 4 (As of in the morning on November 13)

Ground improvement (sea side):  
up to 30 out of 132  
(Since Aug. 23, 2013)

Ground improvement (mountain side):  
up to 26 out of 273  
(Since Oct. 19, 2013)



\* The work area is subject to change due to the on-site situation.