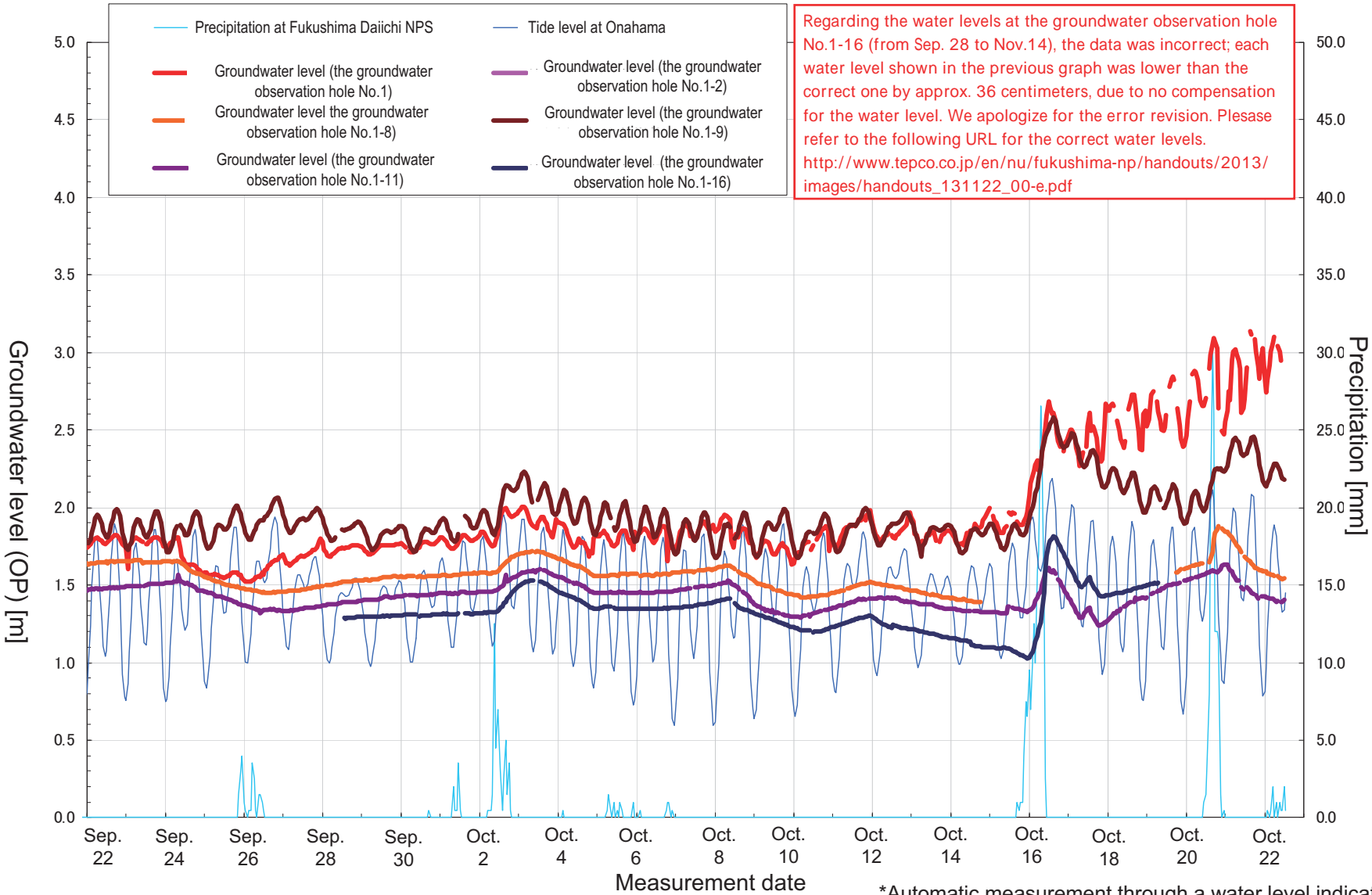


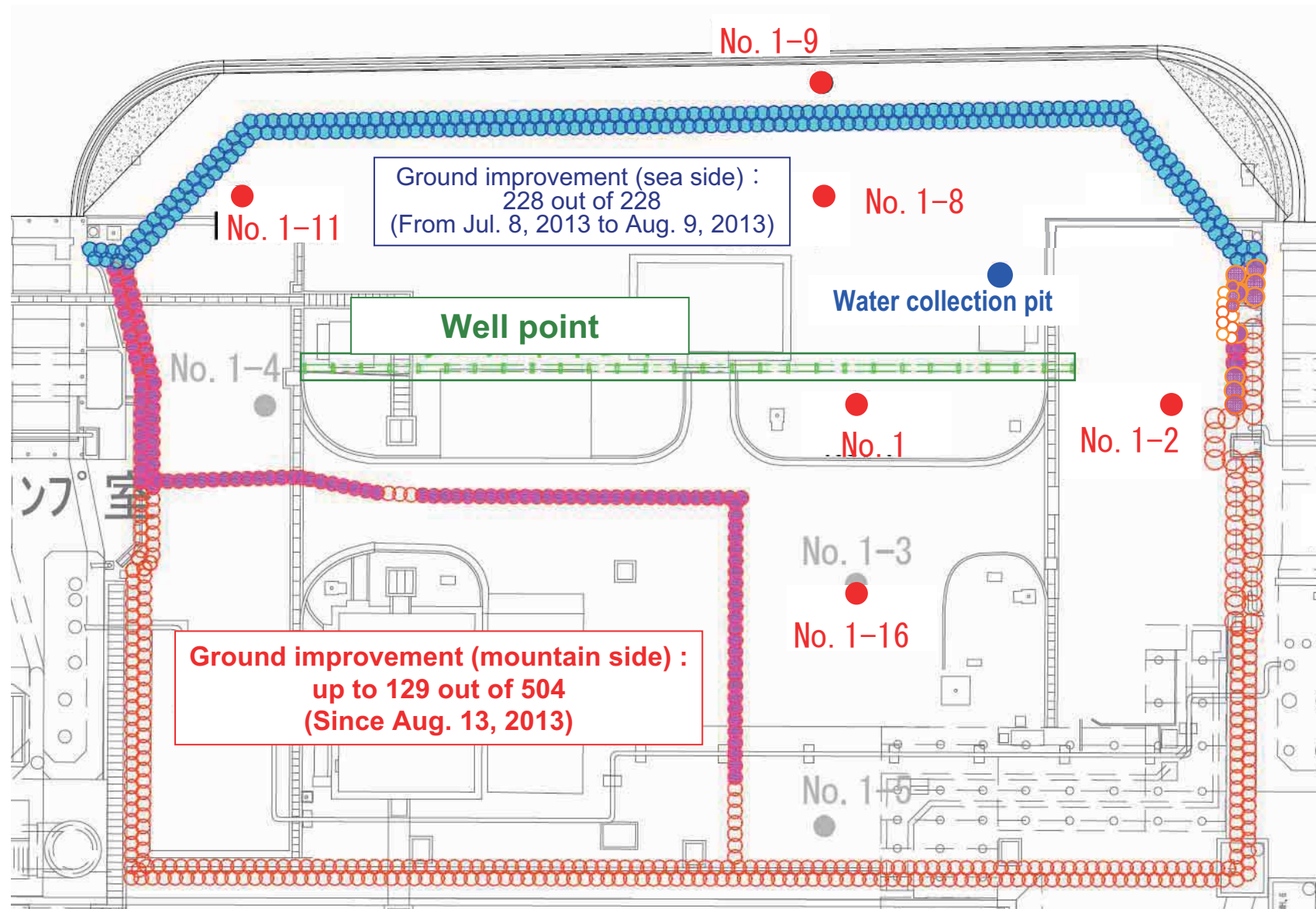
The seawall area at Fukushima Daiichi NPS

<Reference>
 October 23, 2013
 Tokyo Electric Power Company

■ Movement in groundwater level (Between Unit 1 and 2: From Sep. 22 to Oct. 22)

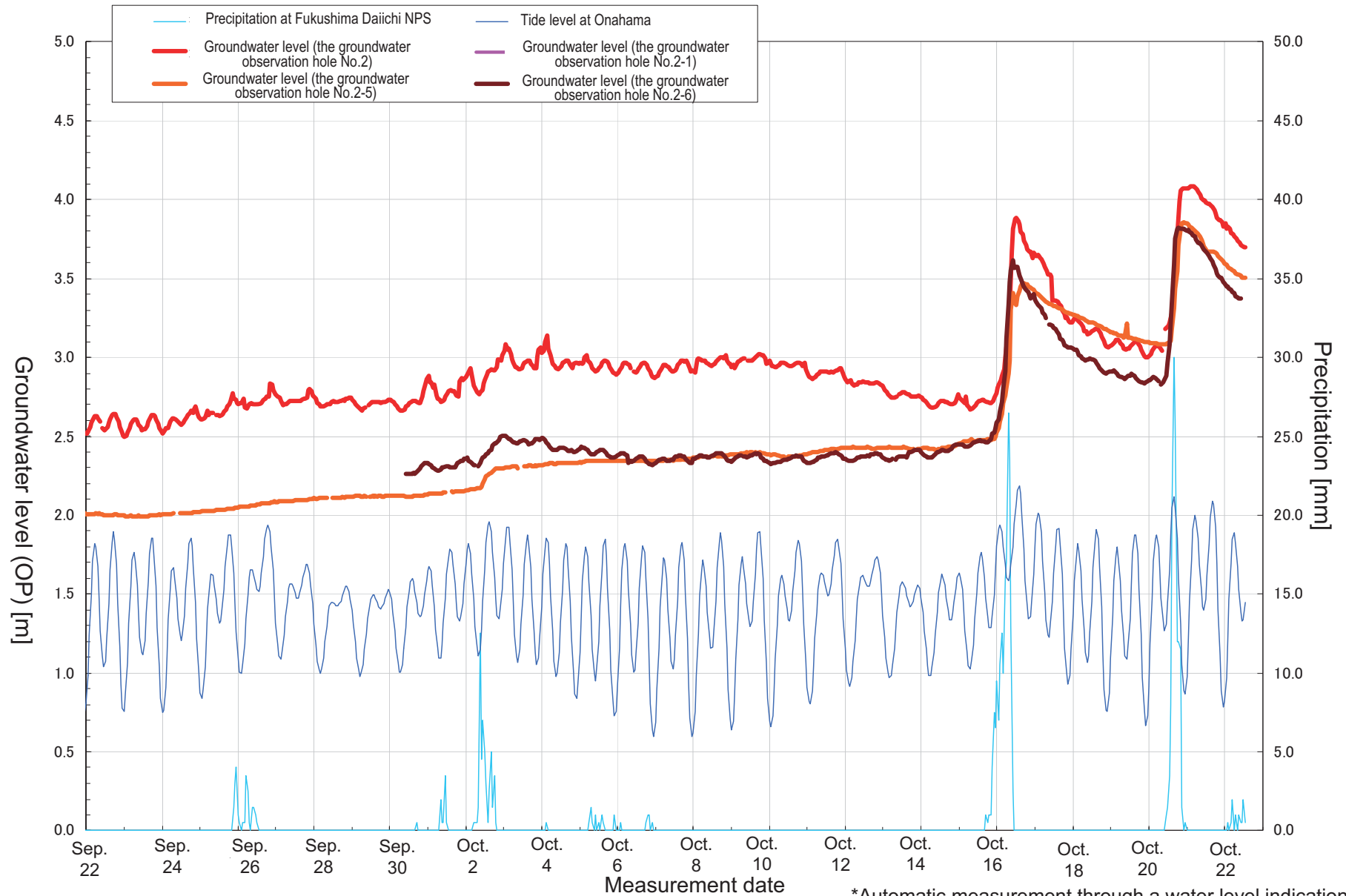


Progress in the ground improvement work between Unit 1 and 2 (As of in the morning on October 22)



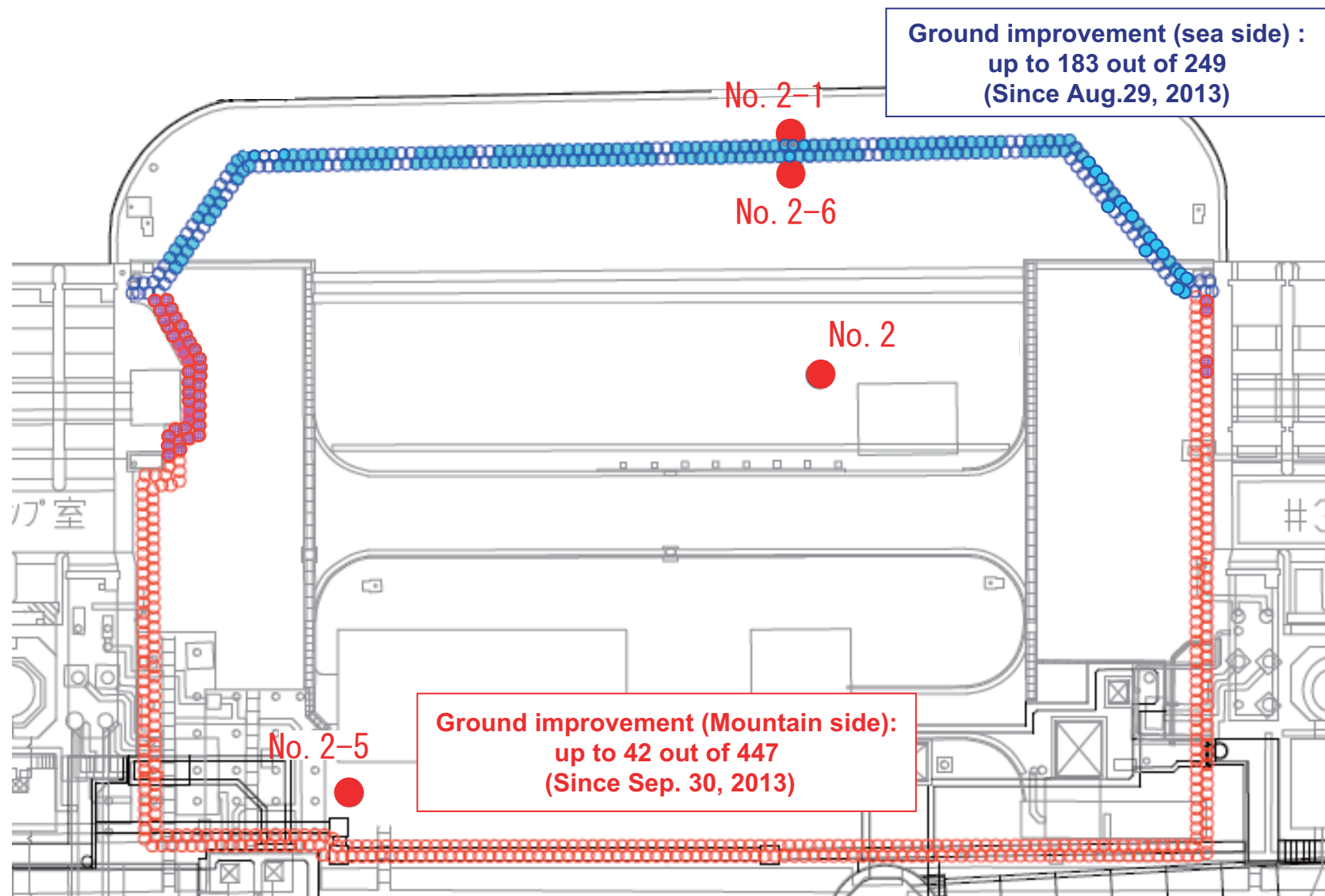
* The work area is subject to change due to the on-site situation.

Movement in groundwater level (Between Unit 2 and 3: From Sep. 22 to Oct. 22)



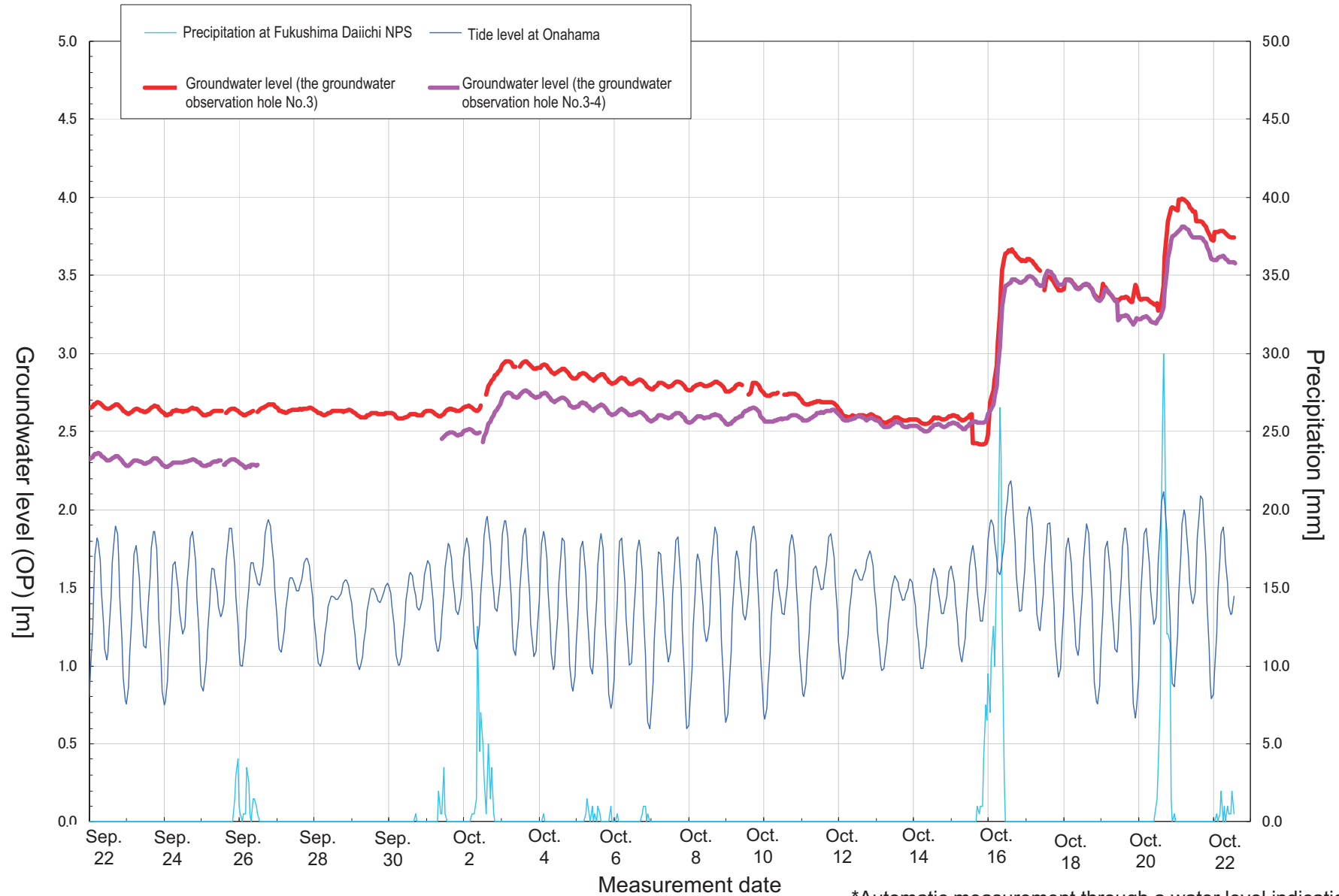
*Automatic measurement through a water level indication

Progress in the ground improvement work between Unit 2 and 3 (As of in the morning on October 22)



* The work area is subject to change due to the on-site situation.

Movement in groundwater level (Between Unit 3 and 4: From Sep. 22 to Oct. 22)



*Automatic measurement through a water level indication

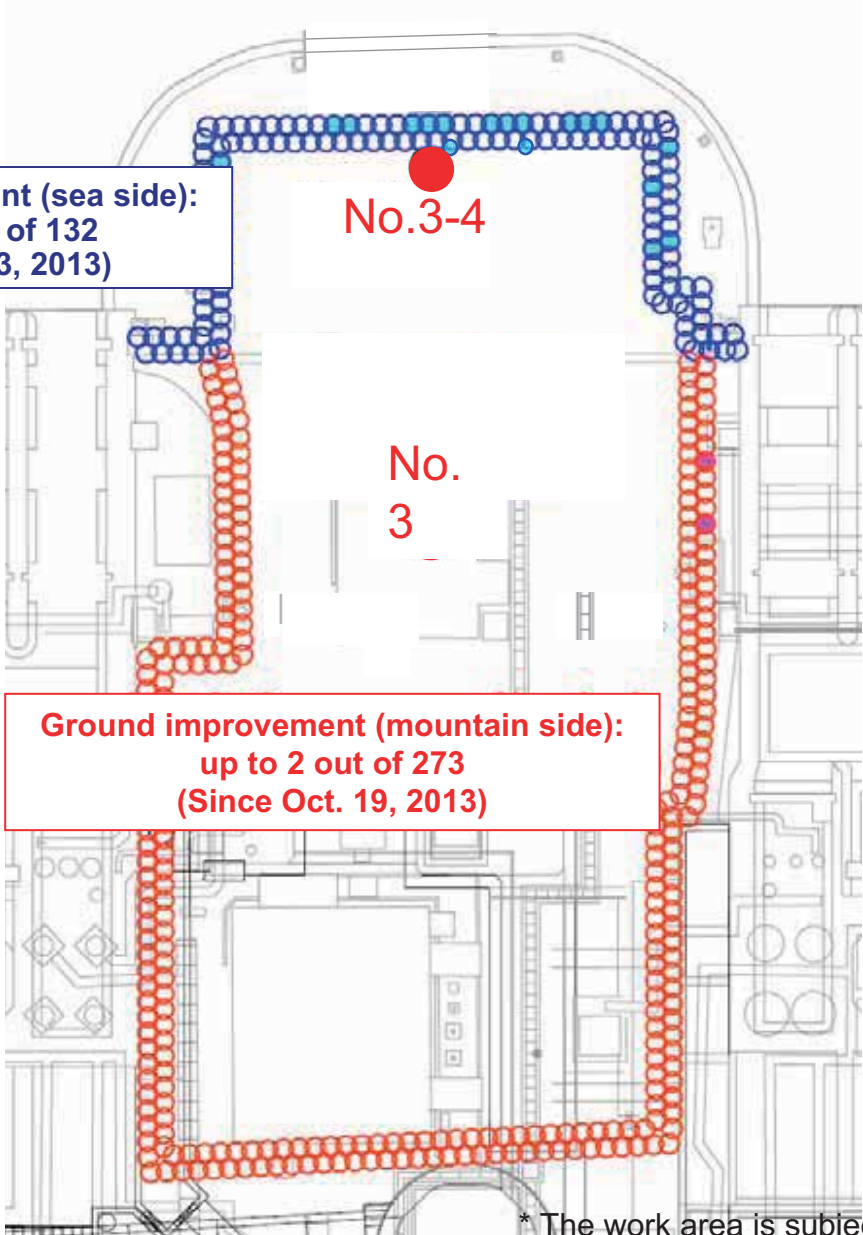
Progress in the ground improvement work between Unit 3 and 4 (As of in the morning on October 22)

Ground improvement (sea side):
up to 29 out of 132
(Since Aug. 23, 2013)

No.3-4

No.
3

Ground improvement (mountain side):
up to 2 out of 273
(Since Oct. 19, 2013)



* The work area is subject to change due to the on-site situation.