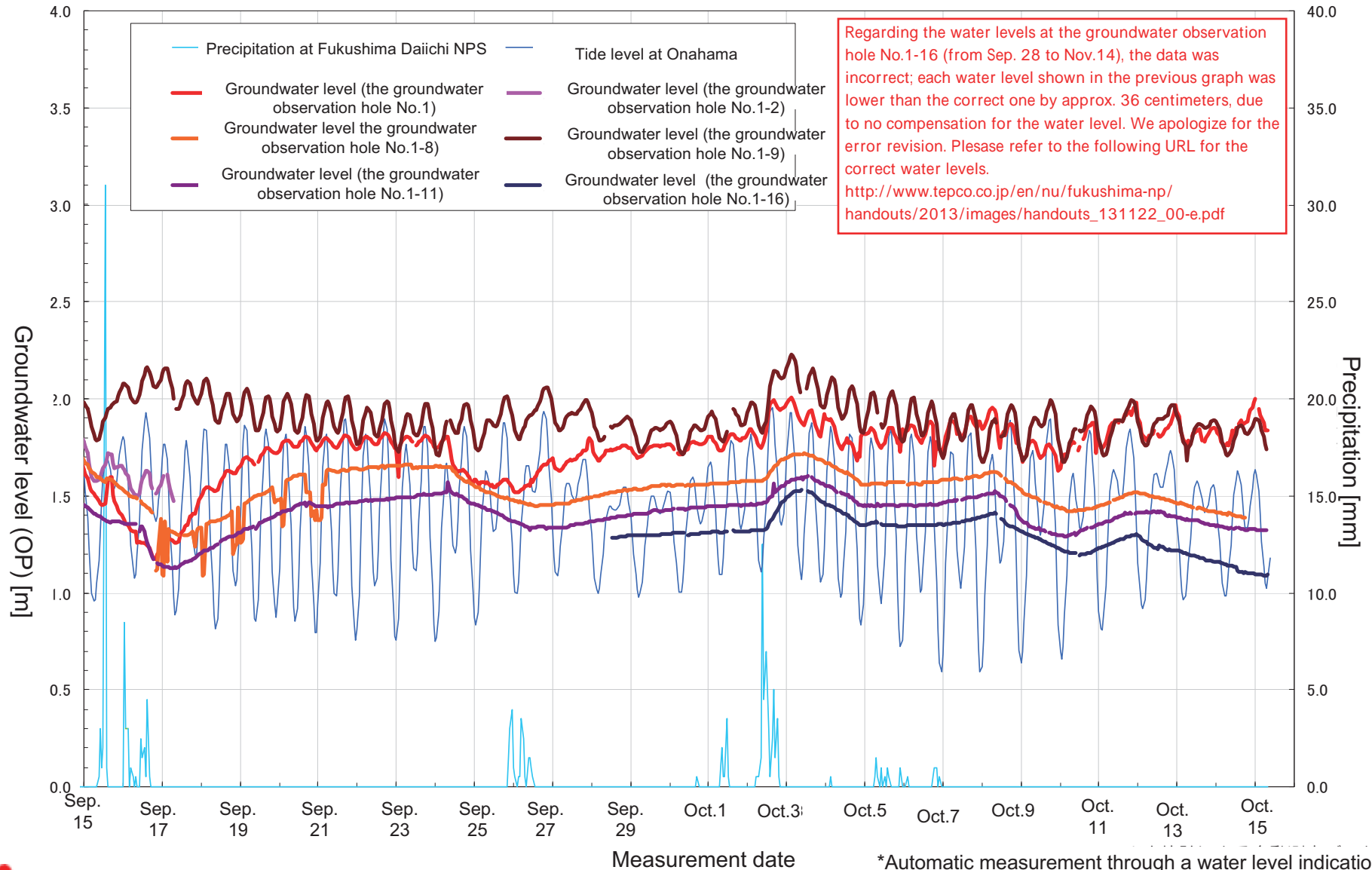


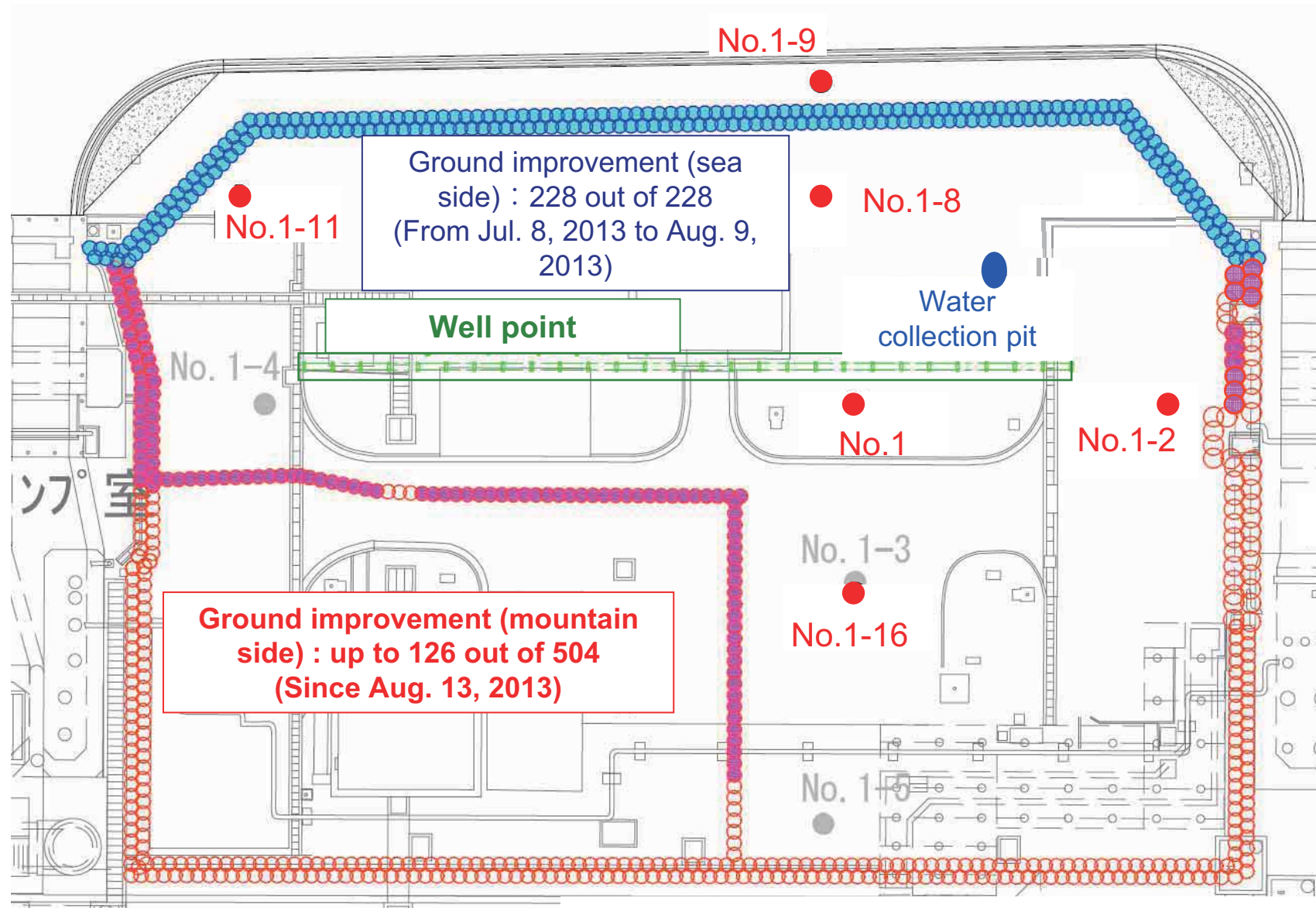
The seawall area at Fukushima Daiichi NPS

■ Movement in groundwater (Between Unit 1 and 2: From Sep.15 to Oct.15)



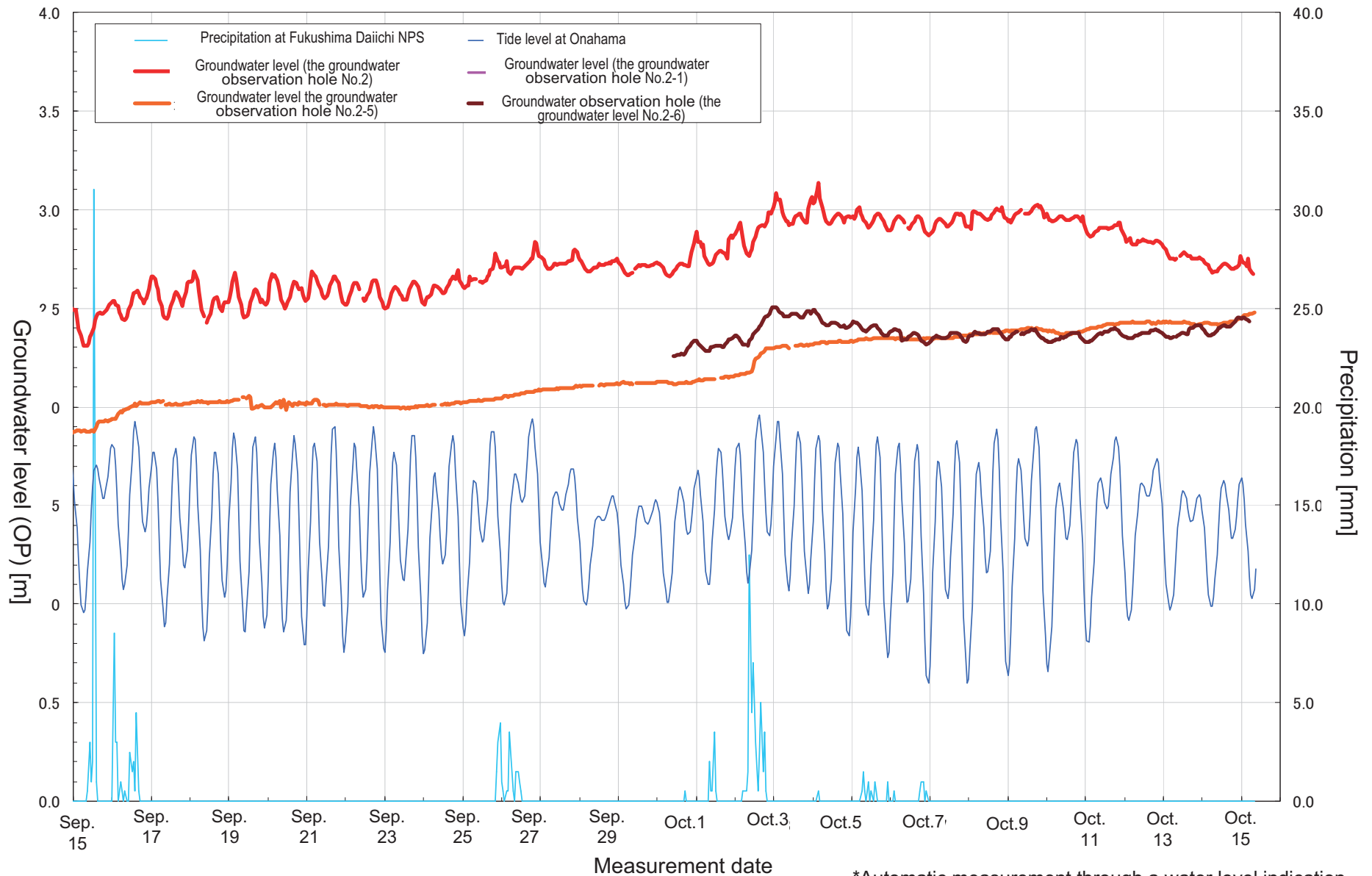
*Automatic measurement through a water level indication

Progress in the ground improvement work between Unit 1 and 2 (As of in the morning on October 15)



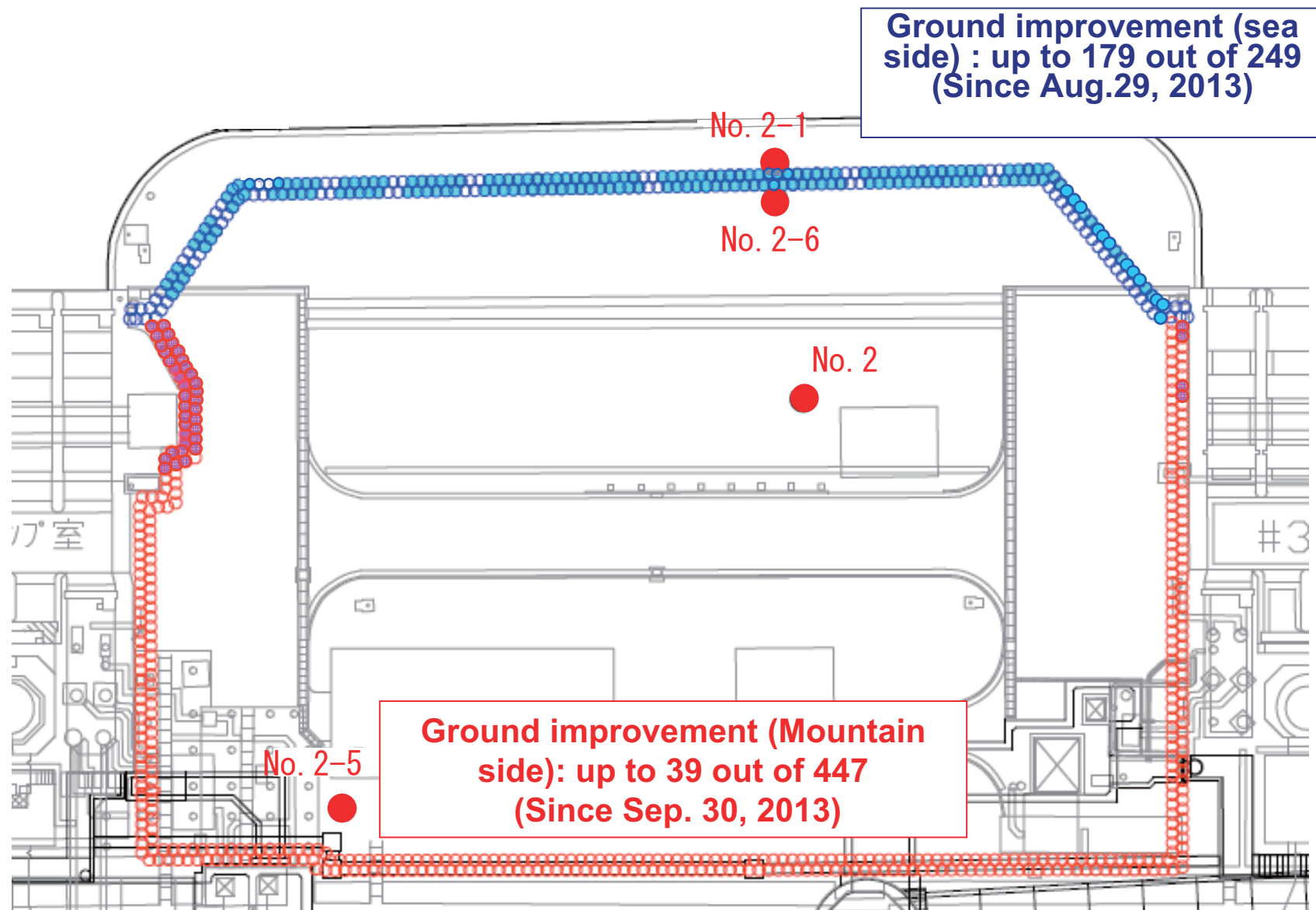
* The work area is subject to change due to the on-site situation.

Movement in groundwater level (Between Unit 2 and 3: From Sep.15 to Oct. 15)



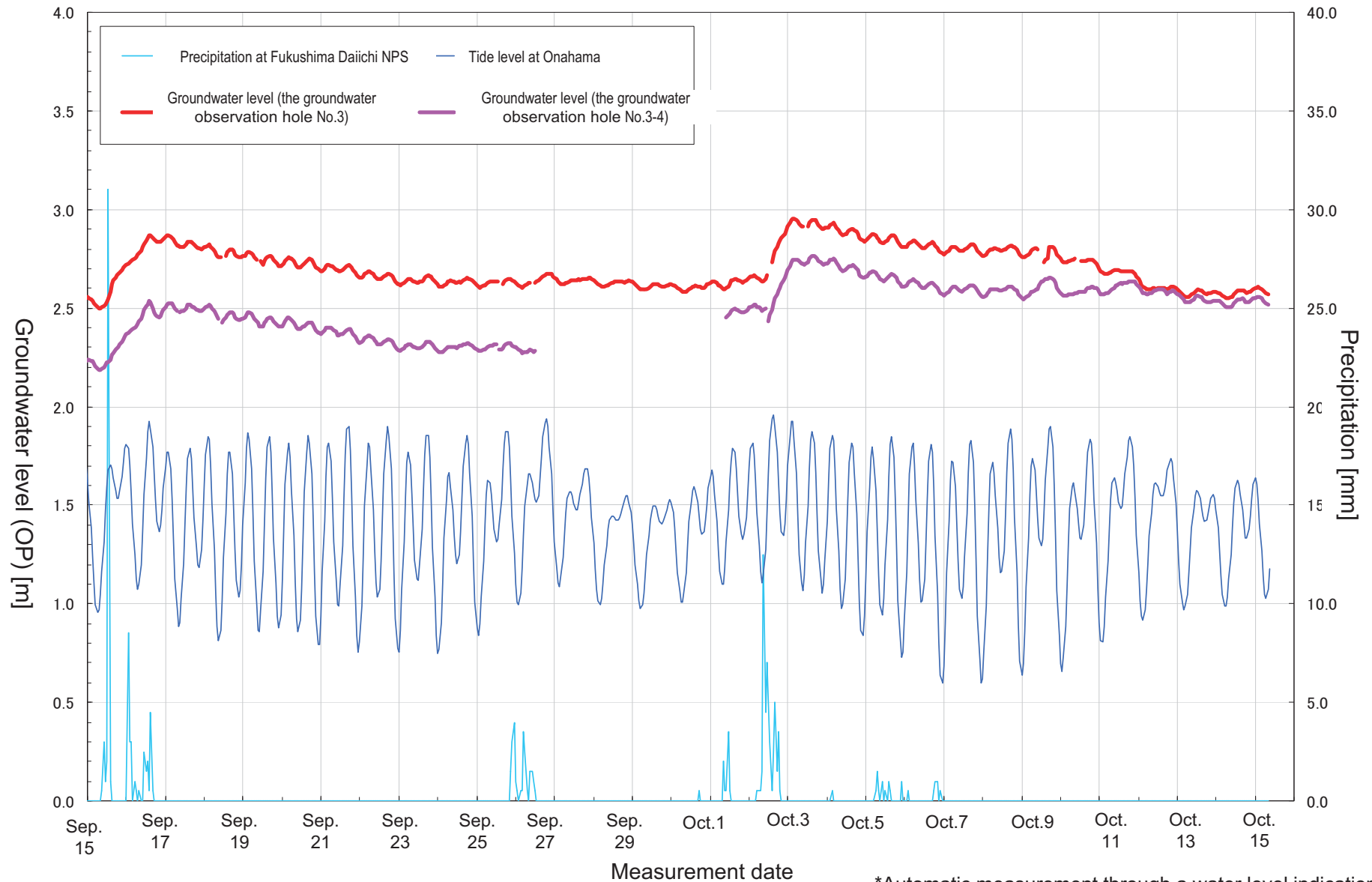
*Automatic measurement through a water level indication

Progress in the ground improvement work between Unit 2 and 3 (As of in the morning on October 15)



* The work area is subject to change due to the on-site situation.

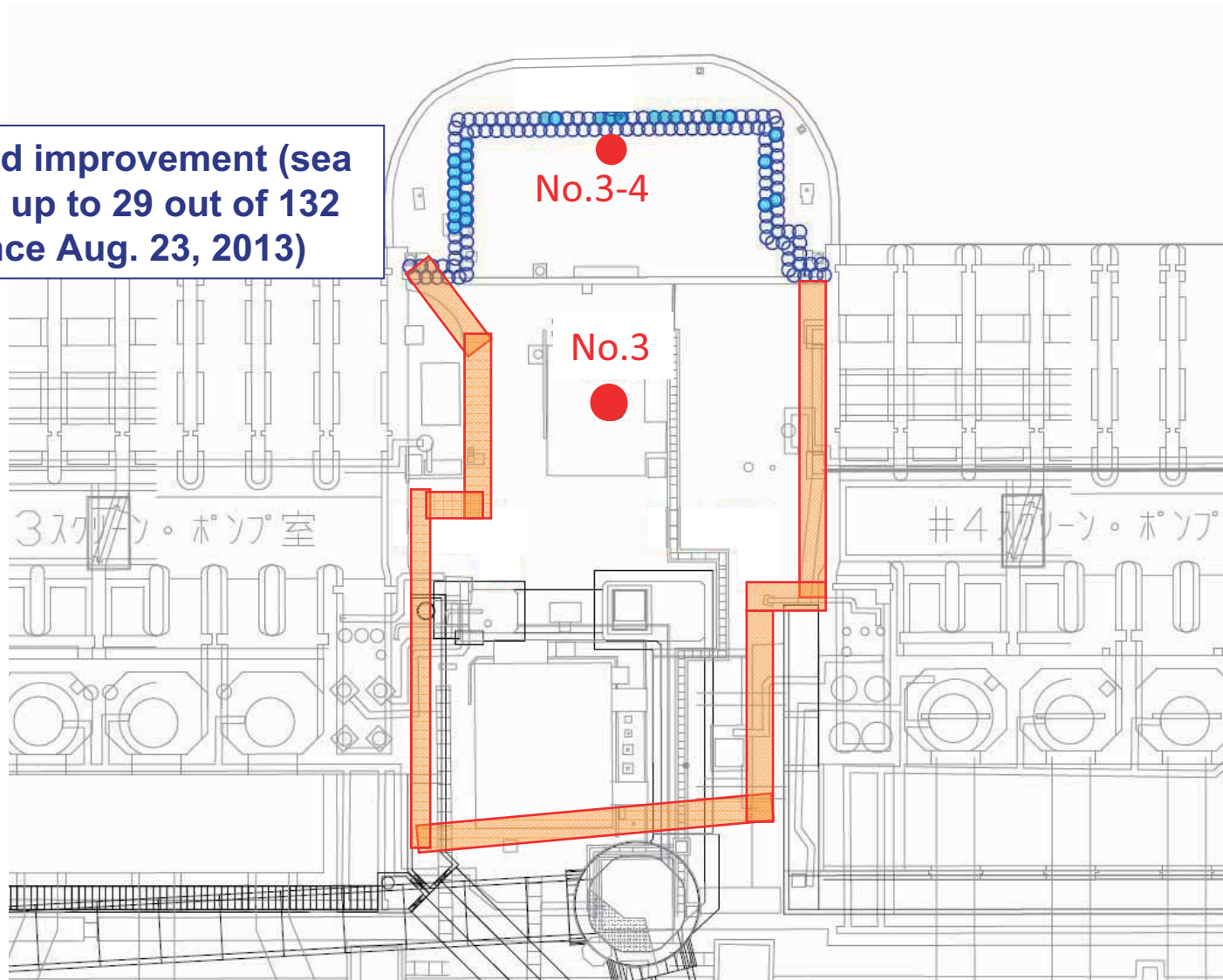
Movement in groundwater level (Between Unit 3 and 4: From Sep. 15 to Oct. 15)



*Automatic measurement through a water level indication

Progress in the ground improvement work between Unit 3 and 4 (As of in the morning on October 15)

Ground improvement (sea side): up to 29 out of 132 (Since Aug. 23, 2013)



* The work area is subject to change due to the on-site situation.