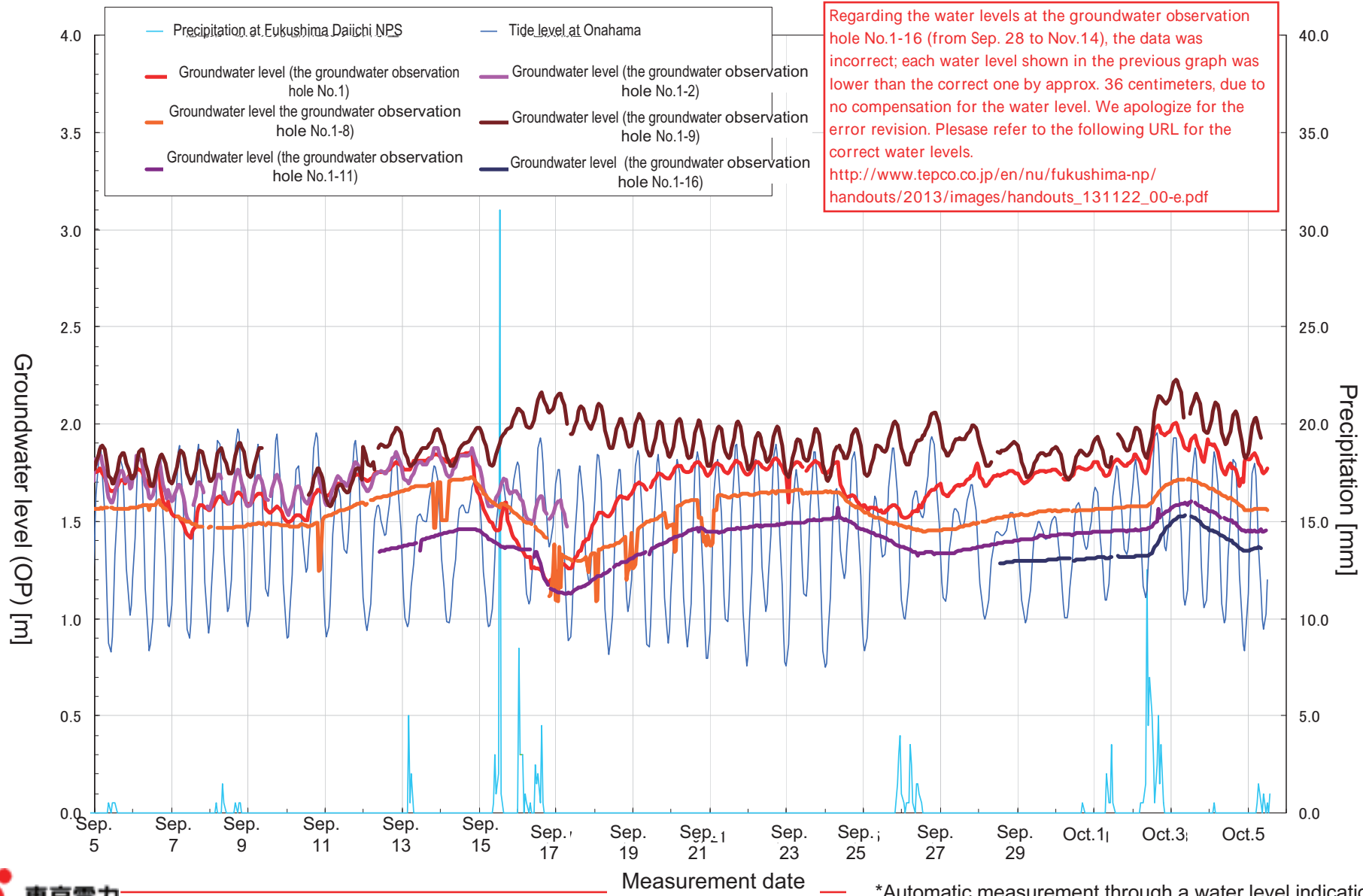


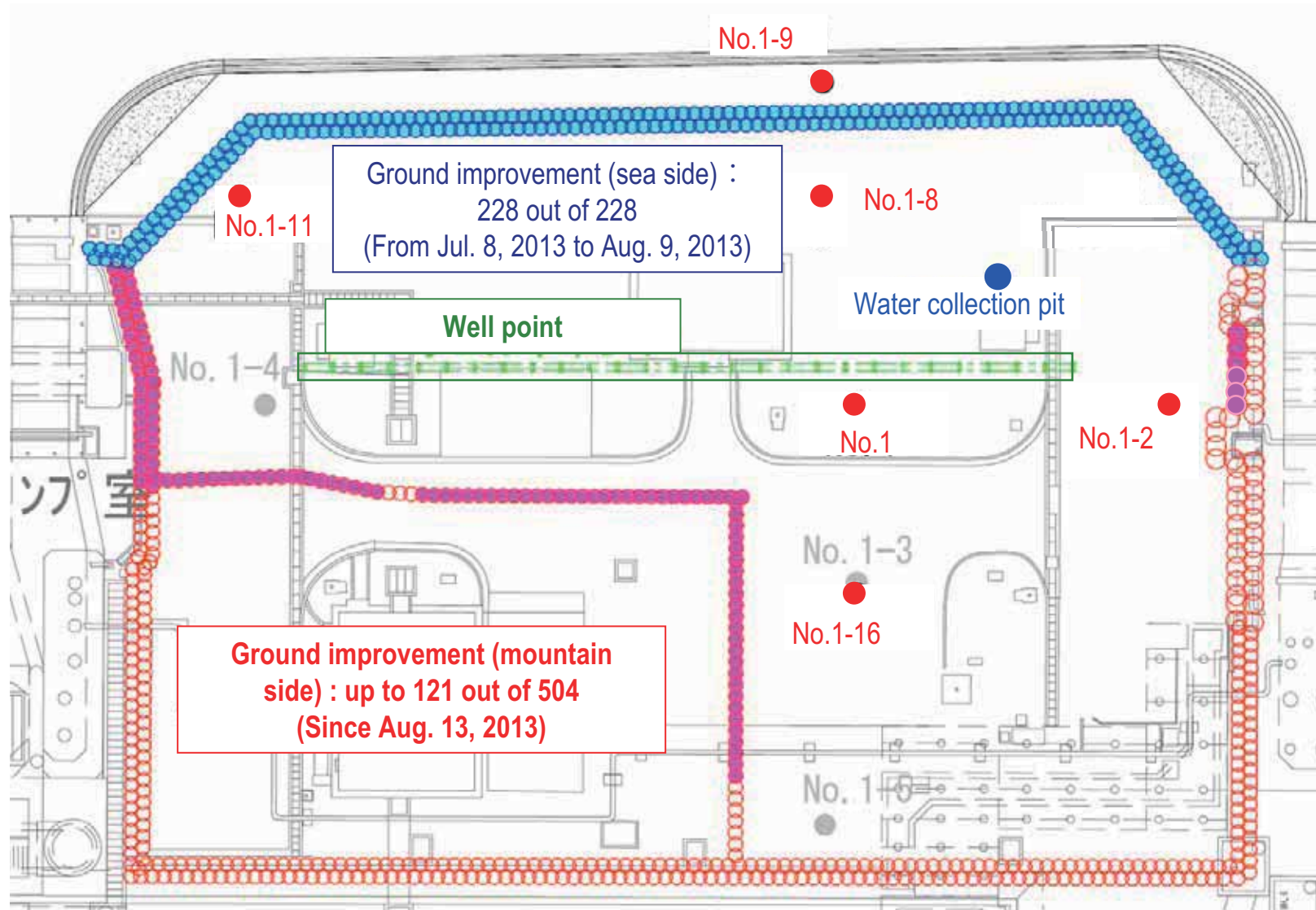
The seawall area at Fukushima Daiichi NPS

<Reference>
 October 7, 2013
 Tokyo Electric Power Company

■ Movement in groundwater level (Between Unit 1 and 2: From Sep. 5 to Oct. 5)

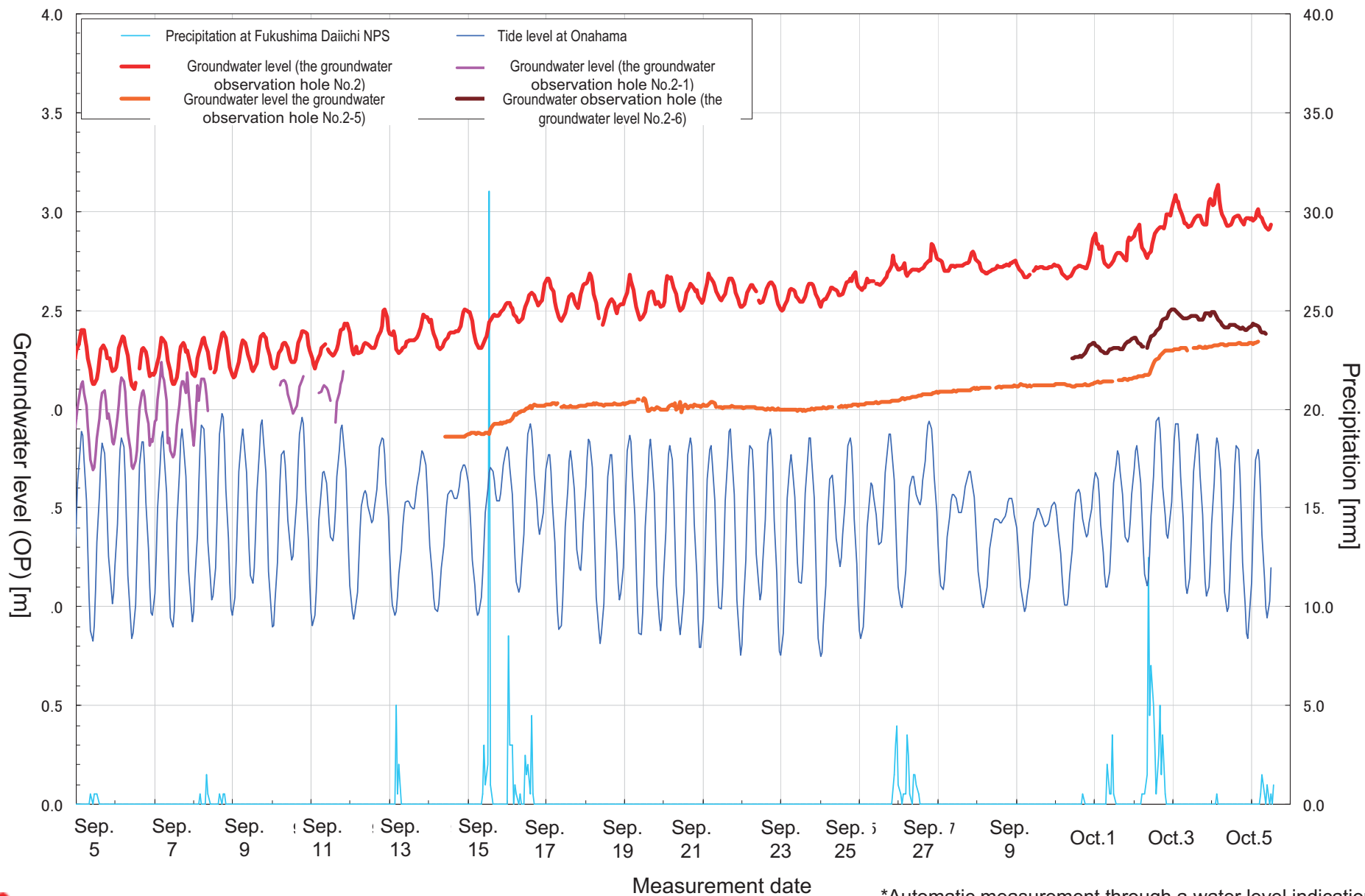


Progress in the ground improvement work between Unit 1 and 2 (As of in the morning on October 7)



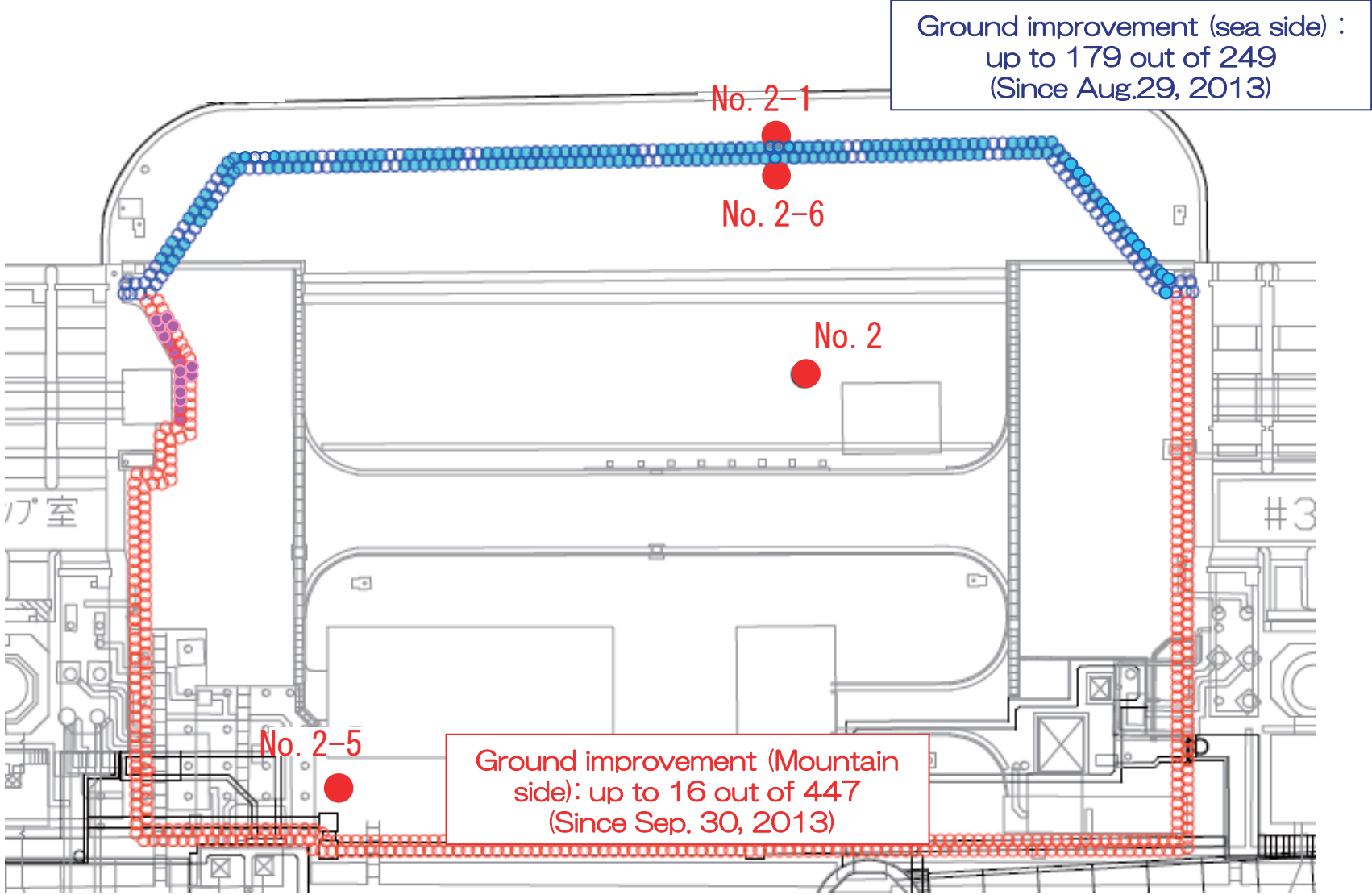
* The work area is subject to change due to the on-site situation.

Movement in groundwater level (Between Unit 2 and 3: From Sep. 5 to Oct. 5)



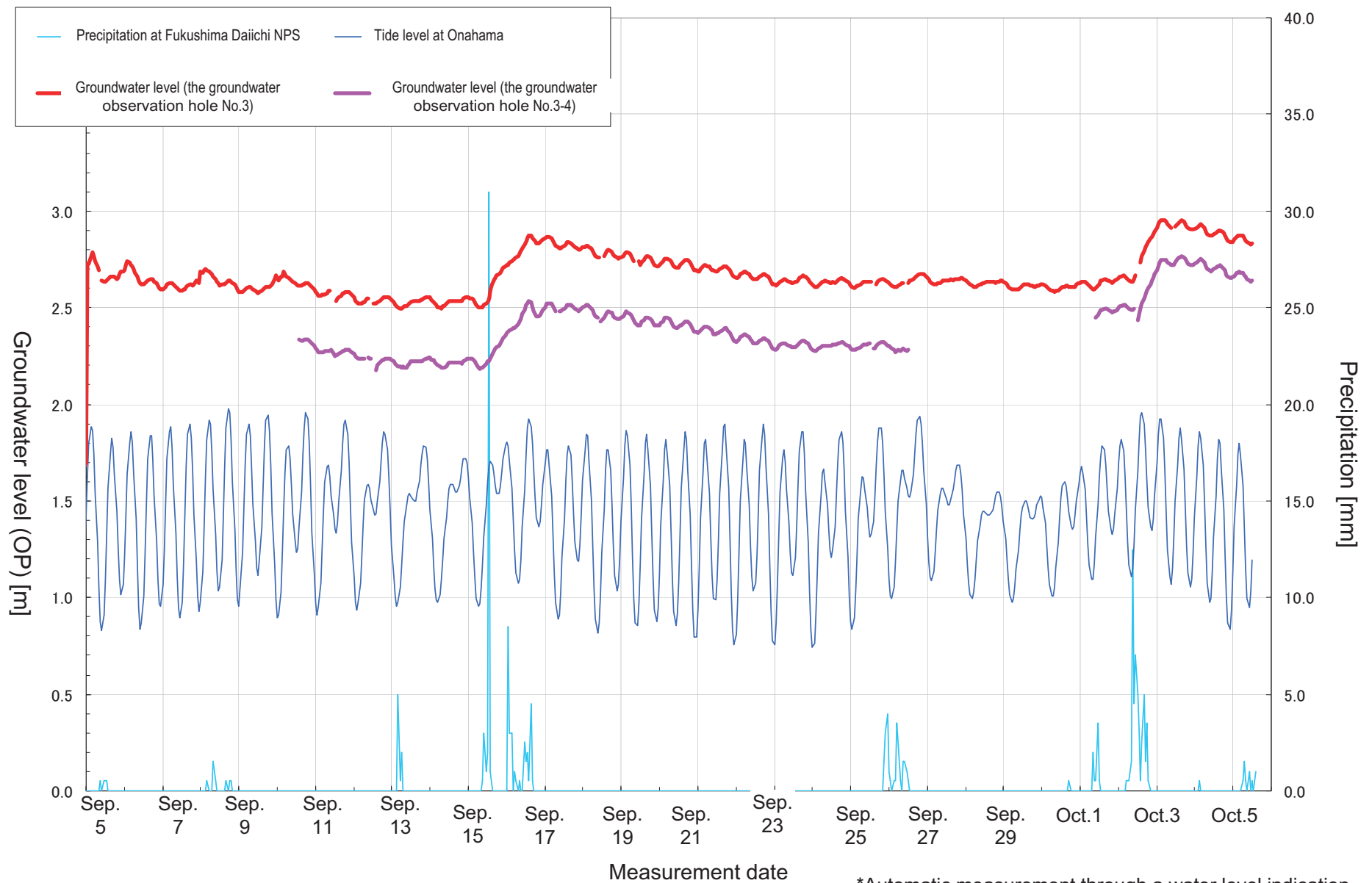
*Automatic measurement through a water level indication

Progress in the ground improvement work between Unit 2 and 3 (As of in the morning on October 7)



* The work area is subject to change due to the on-site situation.

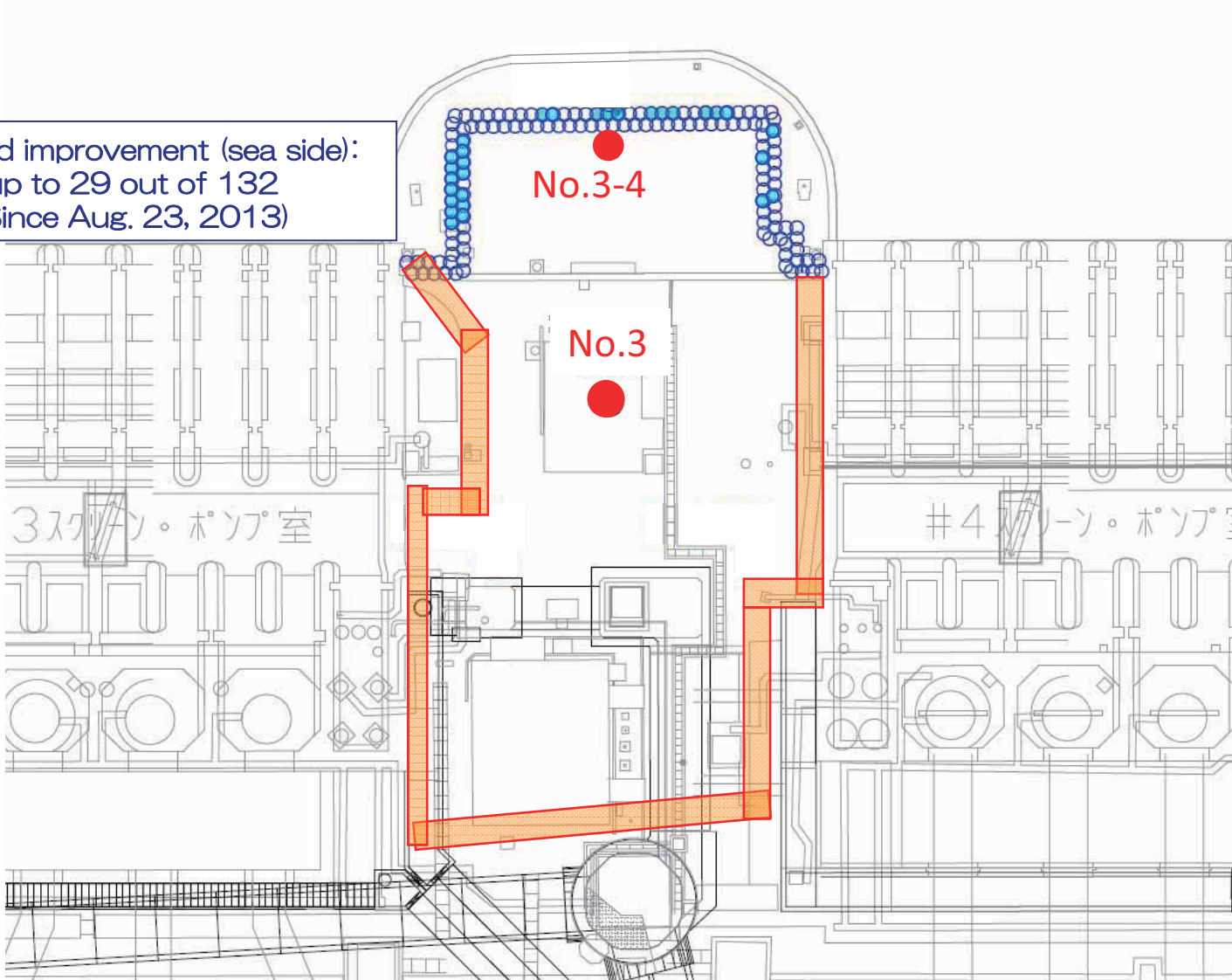
Movement in groundwater level (Between Unit 3 and 4: From Sep. 5 to Oct. 5)



*Automatic measurement through a water level indication

Progress in the ground improvement work between Unit 2 and 3 (As of in the morning on October 7)

Ground improvement (sea side):
up to 29 out of 132
(Since Aug. 23, 2013)



* The work area is subject to change due to the on-site situation.