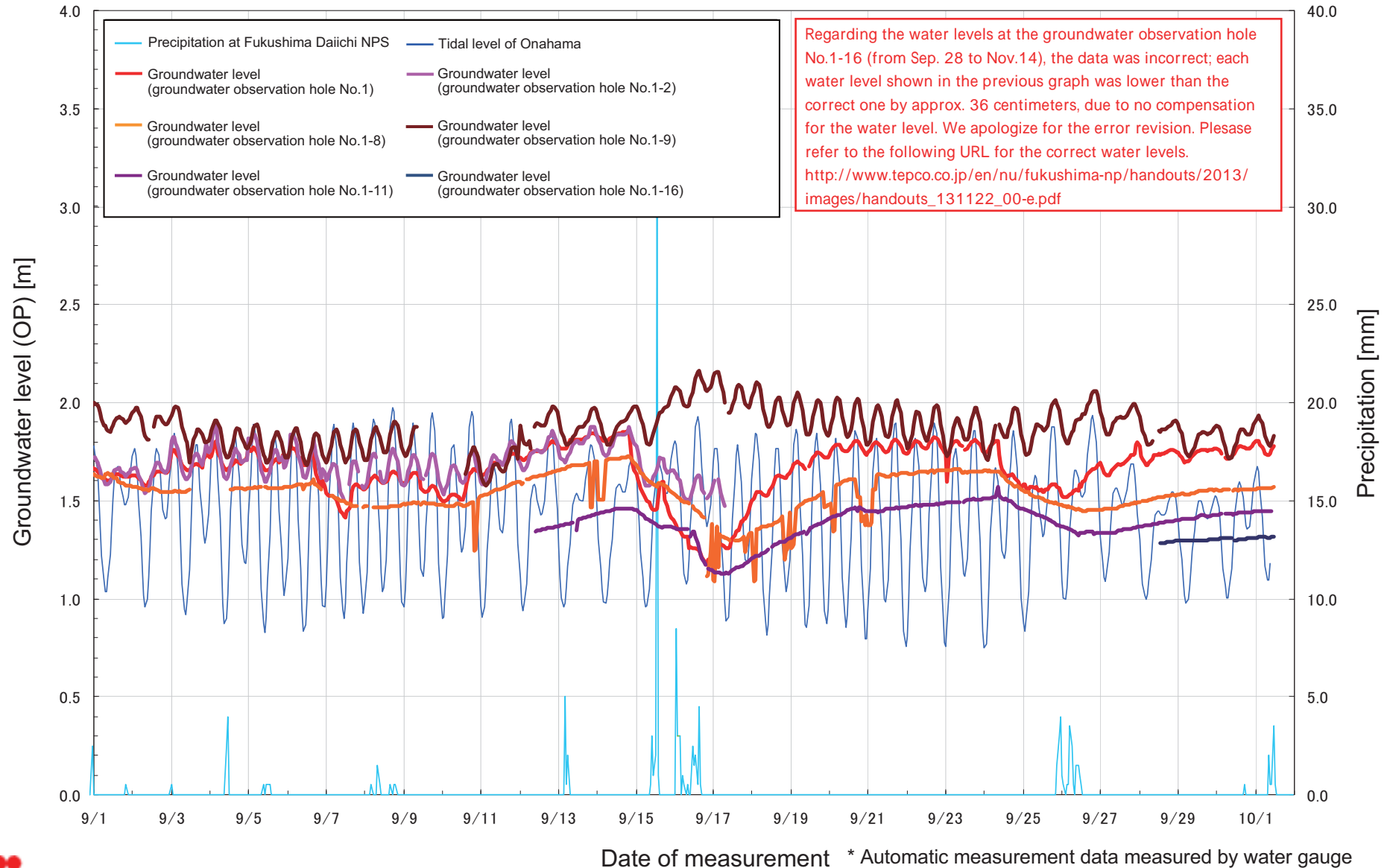


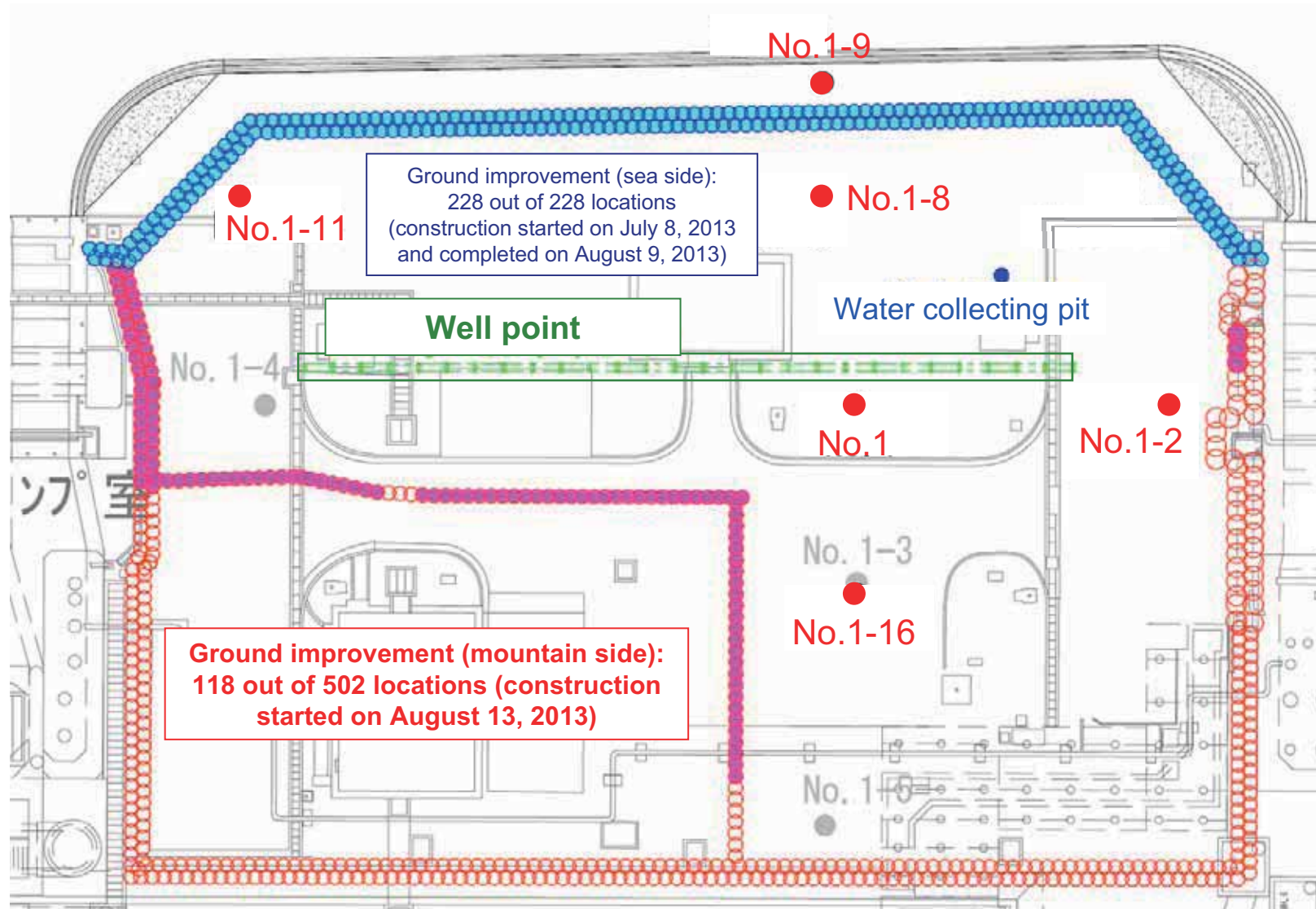
# Condition of the Bank Protection Area at Fukushima Daiichi Nuclear Power Station

<Reference>  
 October 2, 2013  
 Tokyo Electric Power Company

## Transition of the groundwater level between Unit 1 and 2 (September 1 – October 1)

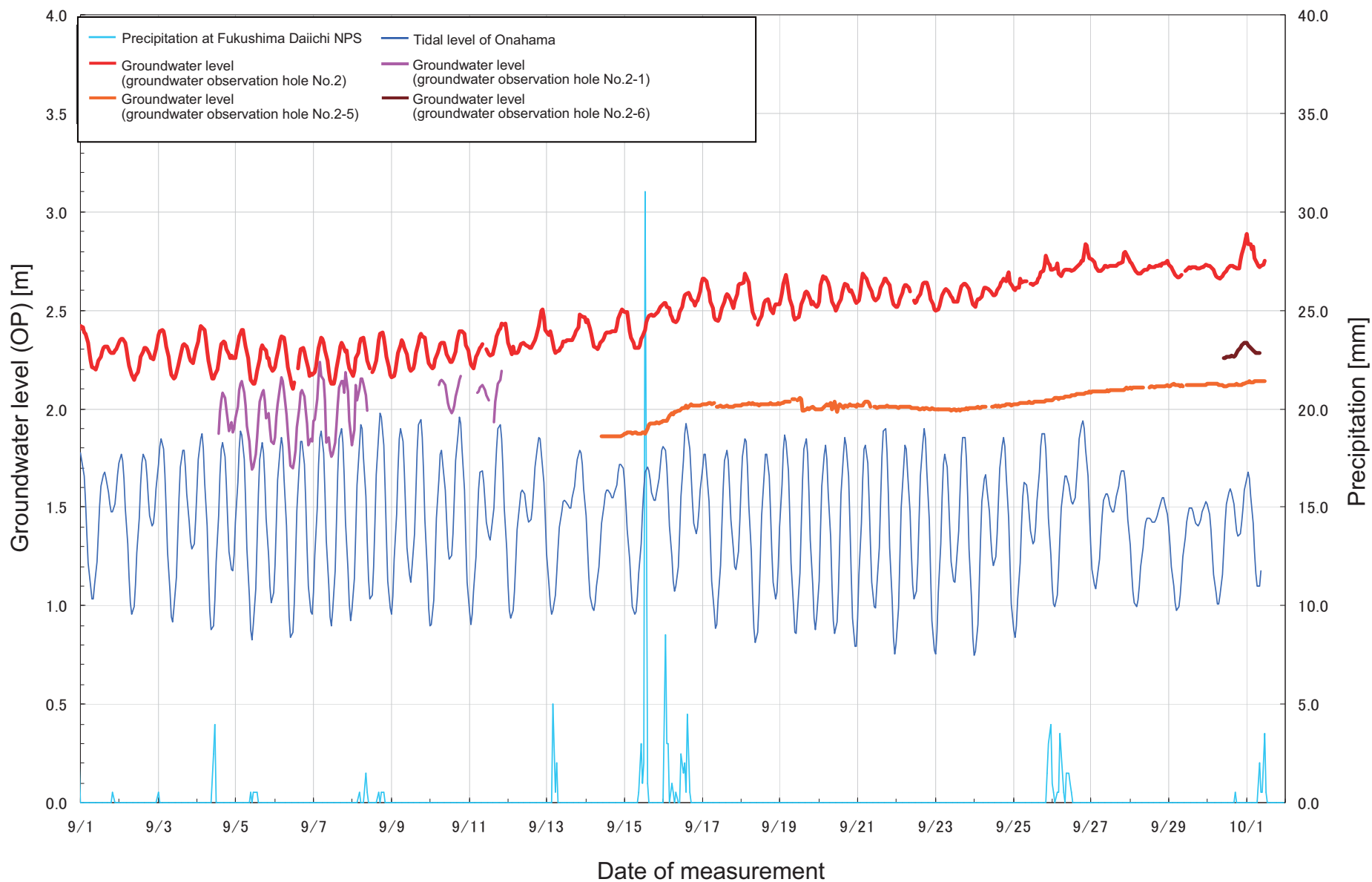


## ■Progress Status of Ground Improvement Construction between Unit 1 and 2 (As of the Morning on October 2)



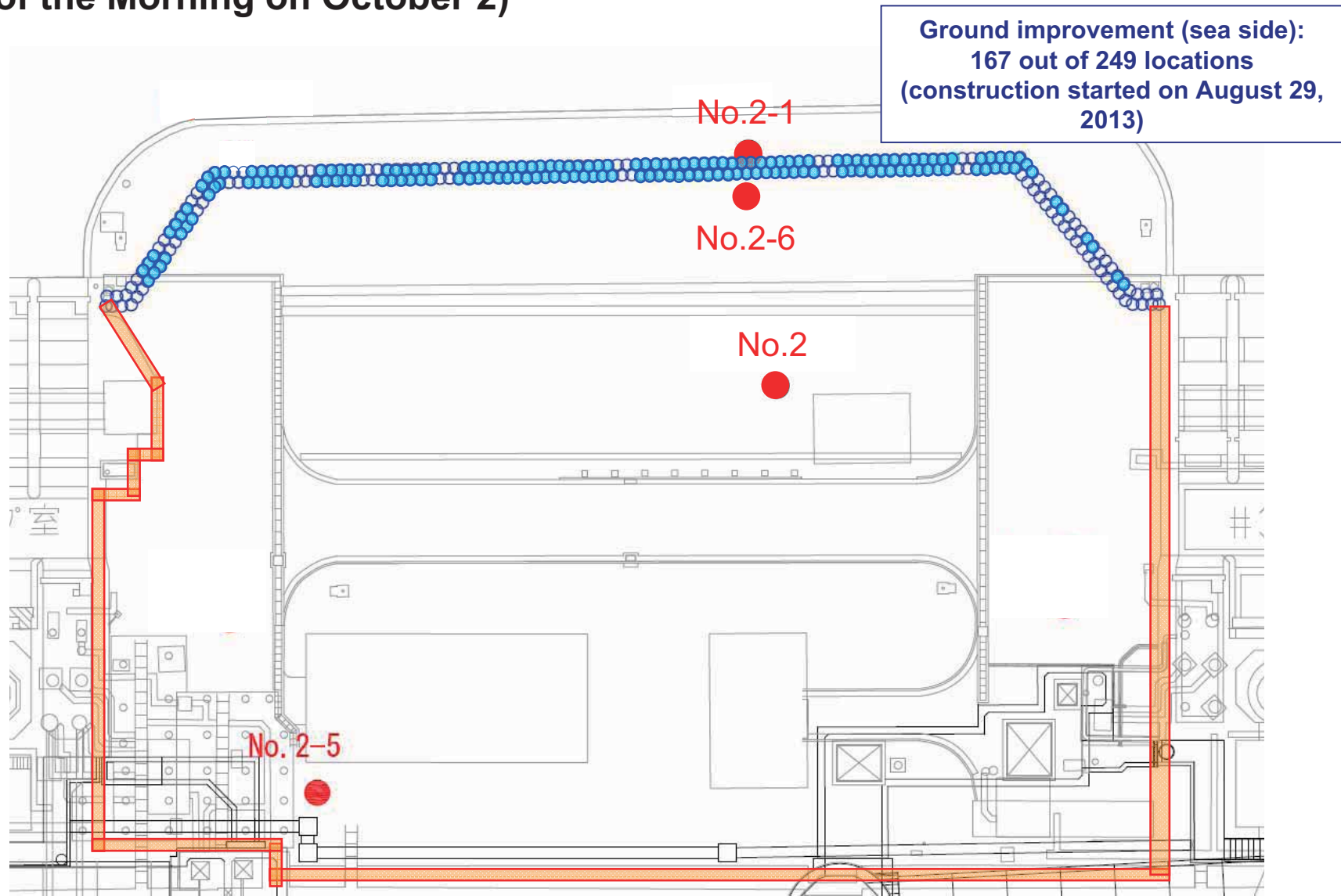
\* The range of the construction is subject to change depends on the site status.

## ■ Transition of the groundwater level between Unit 2 and 3 (September 1 – October 1)



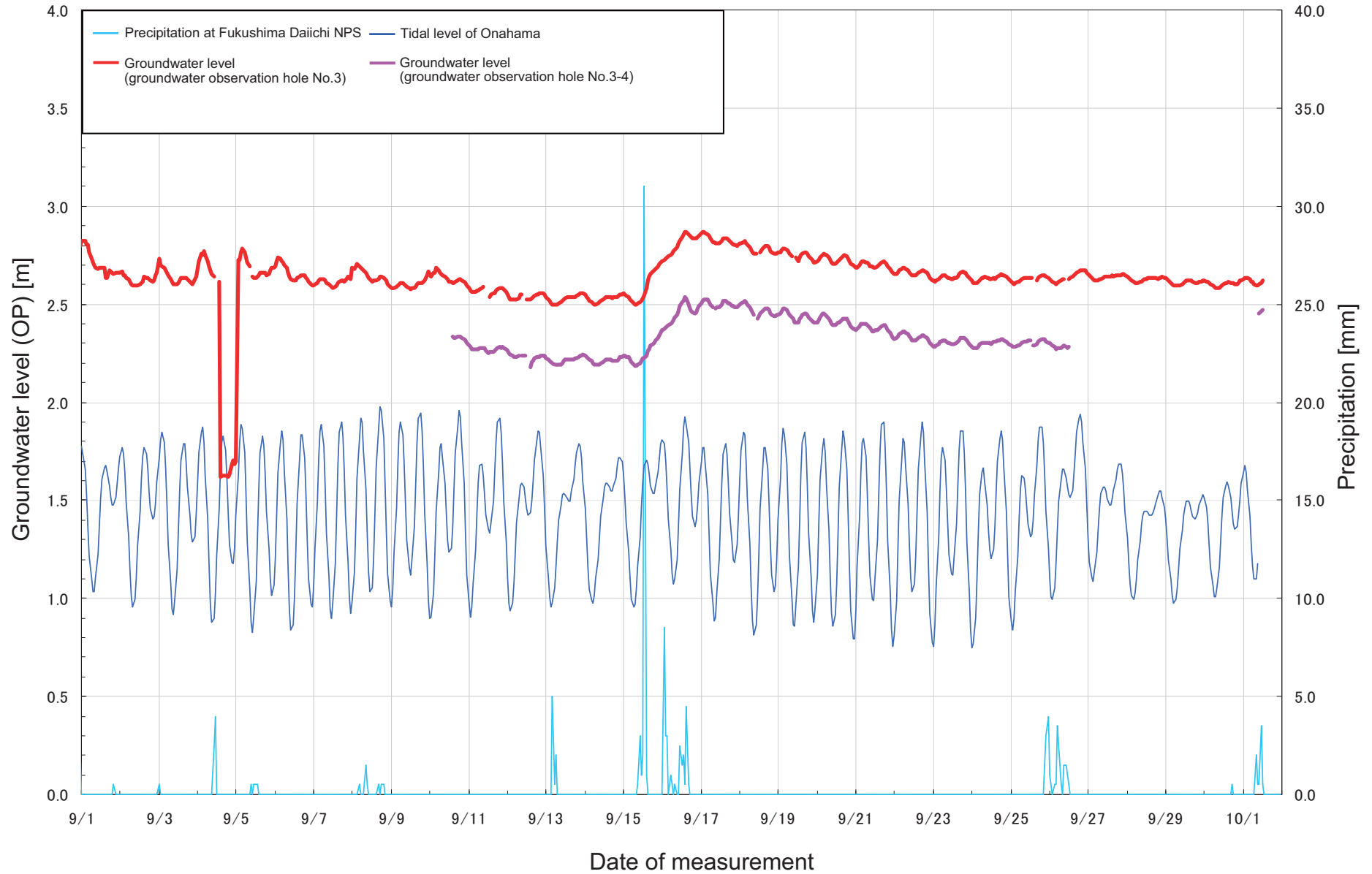
\* Automatic measurement data measured by water gauge

## ■ Progress Status of Ground Improvement Construction between Unit 2 and 3 (As of the Morning on October 2)



\* The range of the construction is subject to change depends on the site status.

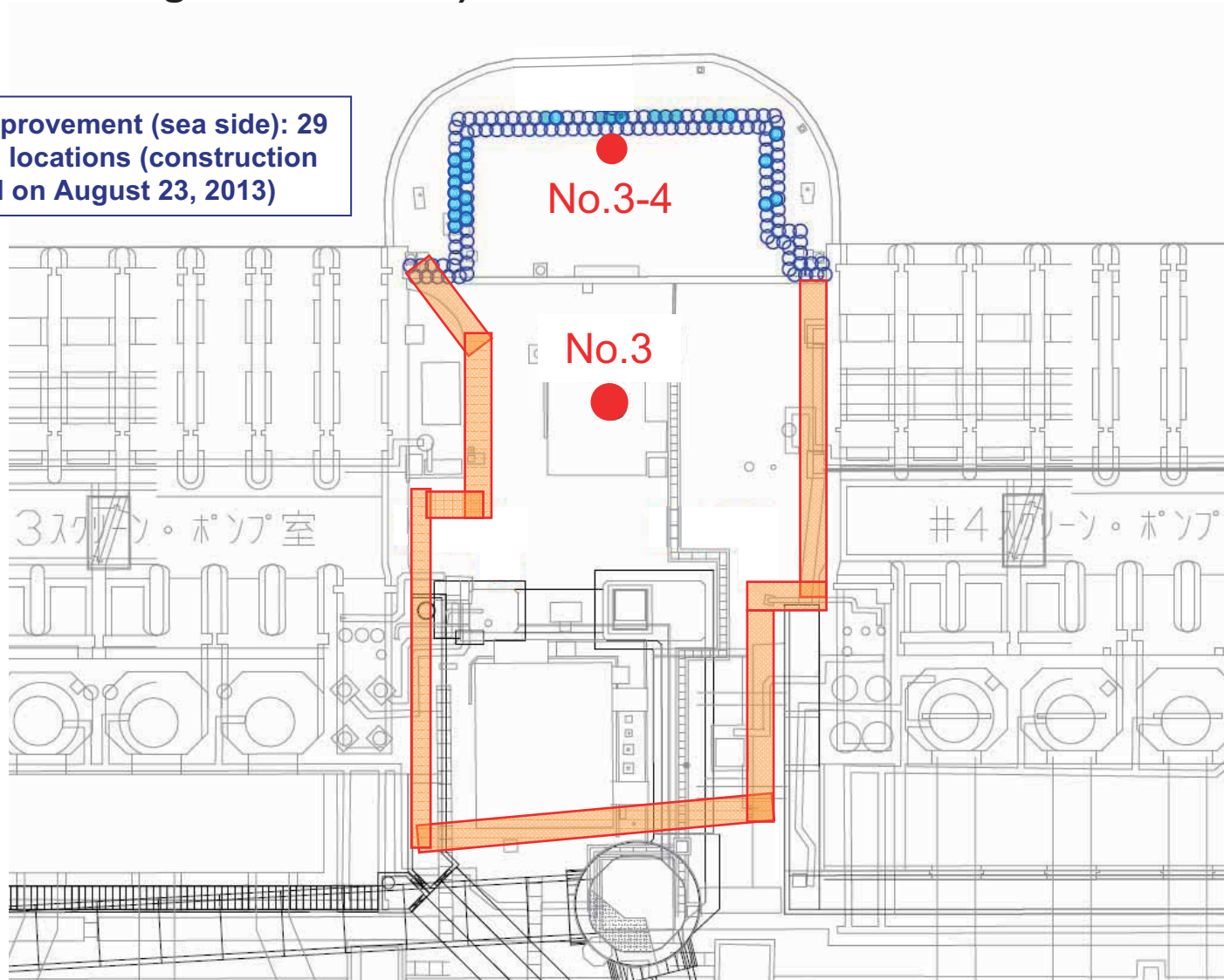
## ■ Transition of the groundwater level between Unit 3 and 4 (September 1 – October 1)



\* Automatic measurement data measured by water gauge

## ■Progress Status of Ground Improvement Construction between Unit 3 and 4 (As of the Morning on October 2)

Ground improvement (sea side): 29  
out of 132 locations (construction  
started on August 23, 2013)



\* The range of the construction is subject to change depends on the site status.