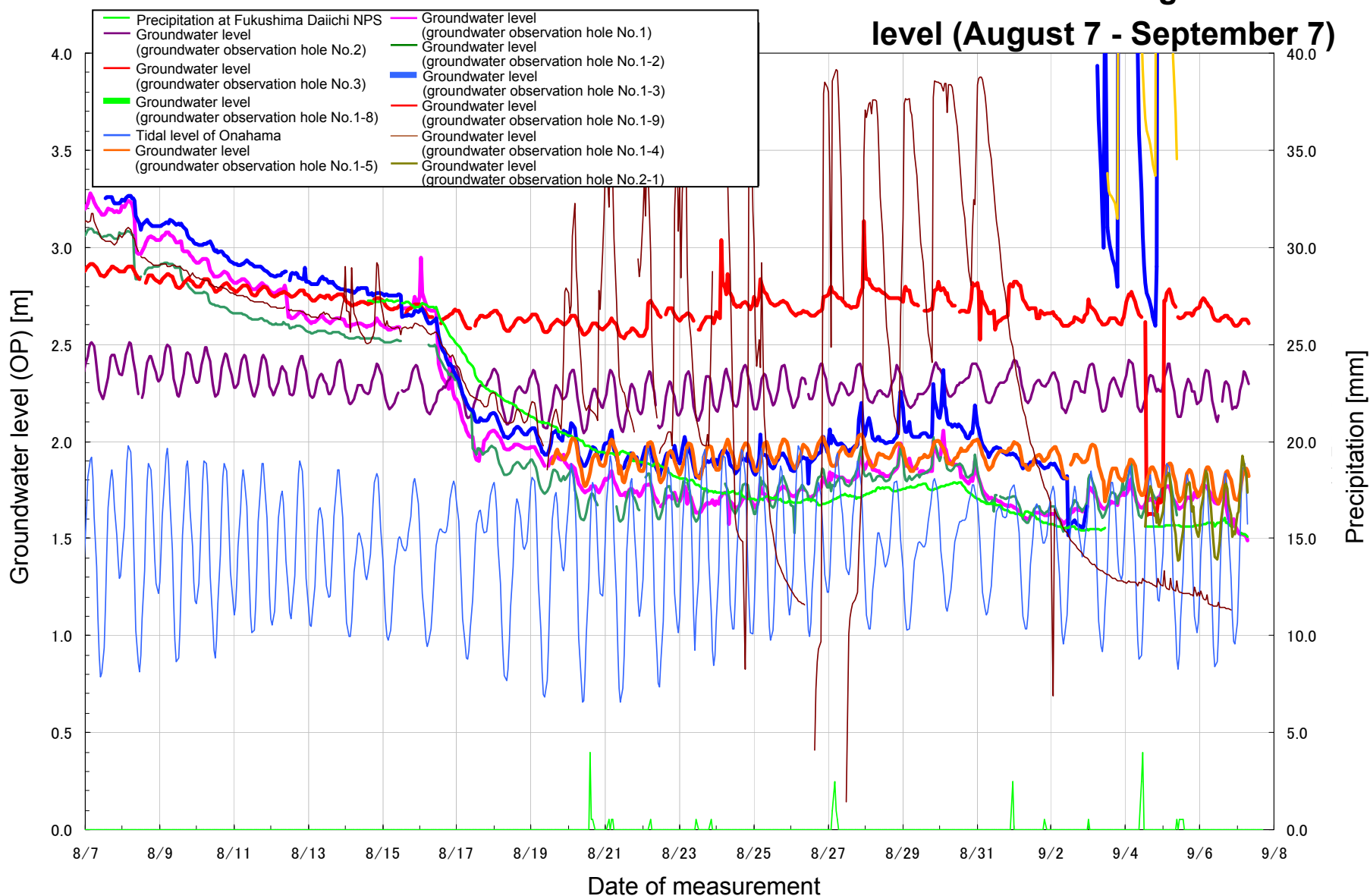


Condition of the Bank Protection Area at Fukushima Daiichi Nuclear Power Station

<Reference>
September 9, 2013
Tokyo Electric Power Company

■ Transition of the groundwater level (August 7 - September 7)



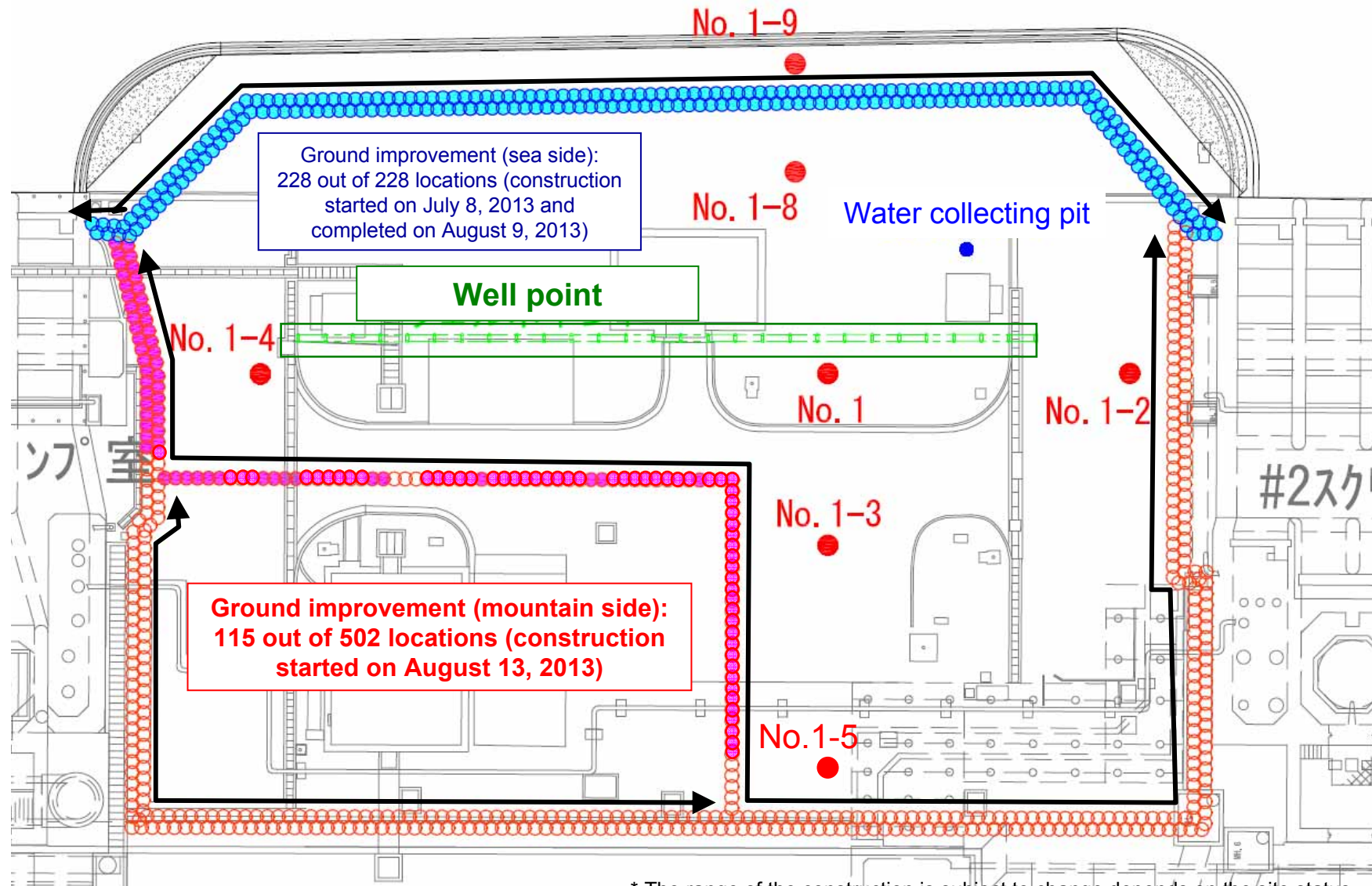
* Automatic measurement data measured by water gauge

* No measurement can be performed at the groundwater observation hole No.1-3, since chemical has flowed into the hole. A water gauge has temporarily removed from the groundwater observation hole No.1-5 due to the ground improvement work.

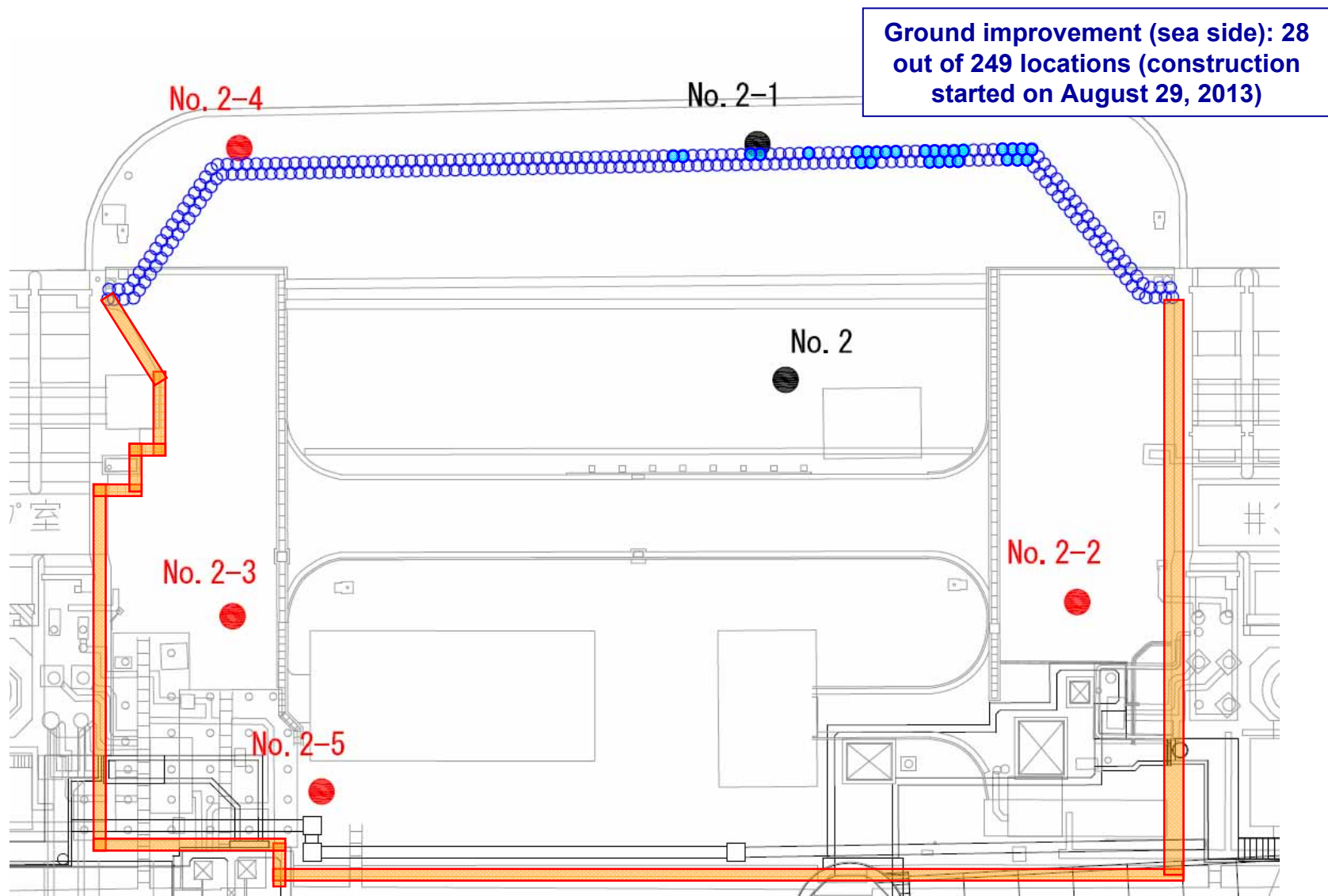


東京電力

■Progress Status of Ground Improvement Construction between Unit 1 and 2 (As of the Morning on September 9)



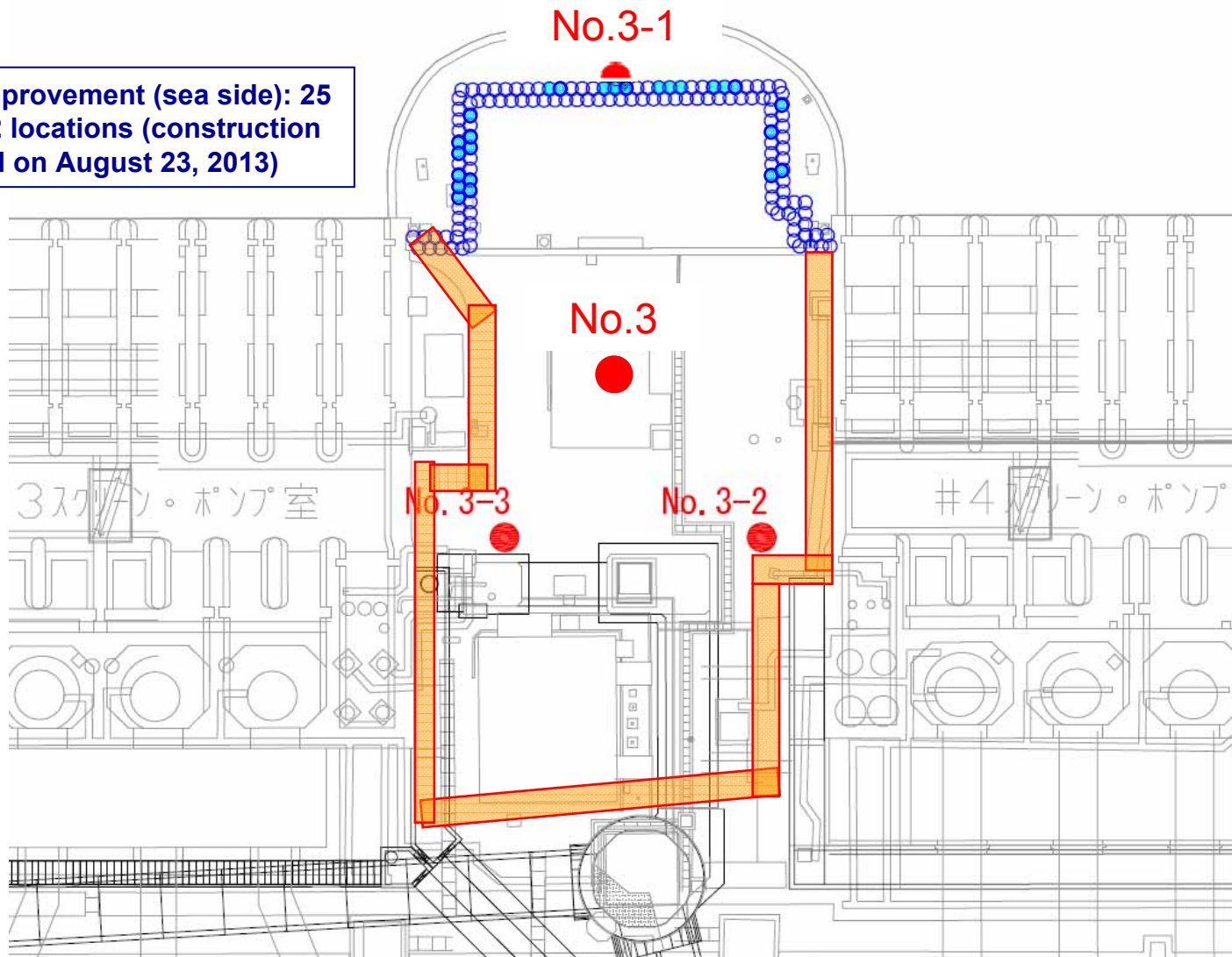
■Progress Status of Ground Improvement Construction between Unit 2 and 3 (As of the Morning on September 9)



* The range of the construction is subject to change depends on the site status.

■Progress Status of Ground Improvement Construction between Unit 3 and 4 (As of the Morning on September 9)

Ground improvement (sea side): 25
out of 132 locations (construction
started on August 23, 2013)



*1 The range of the construction is subject to change depends on the site status.

*2 Groundwater observation hole No.3-1 will be not in use due to the ground improvement construction.