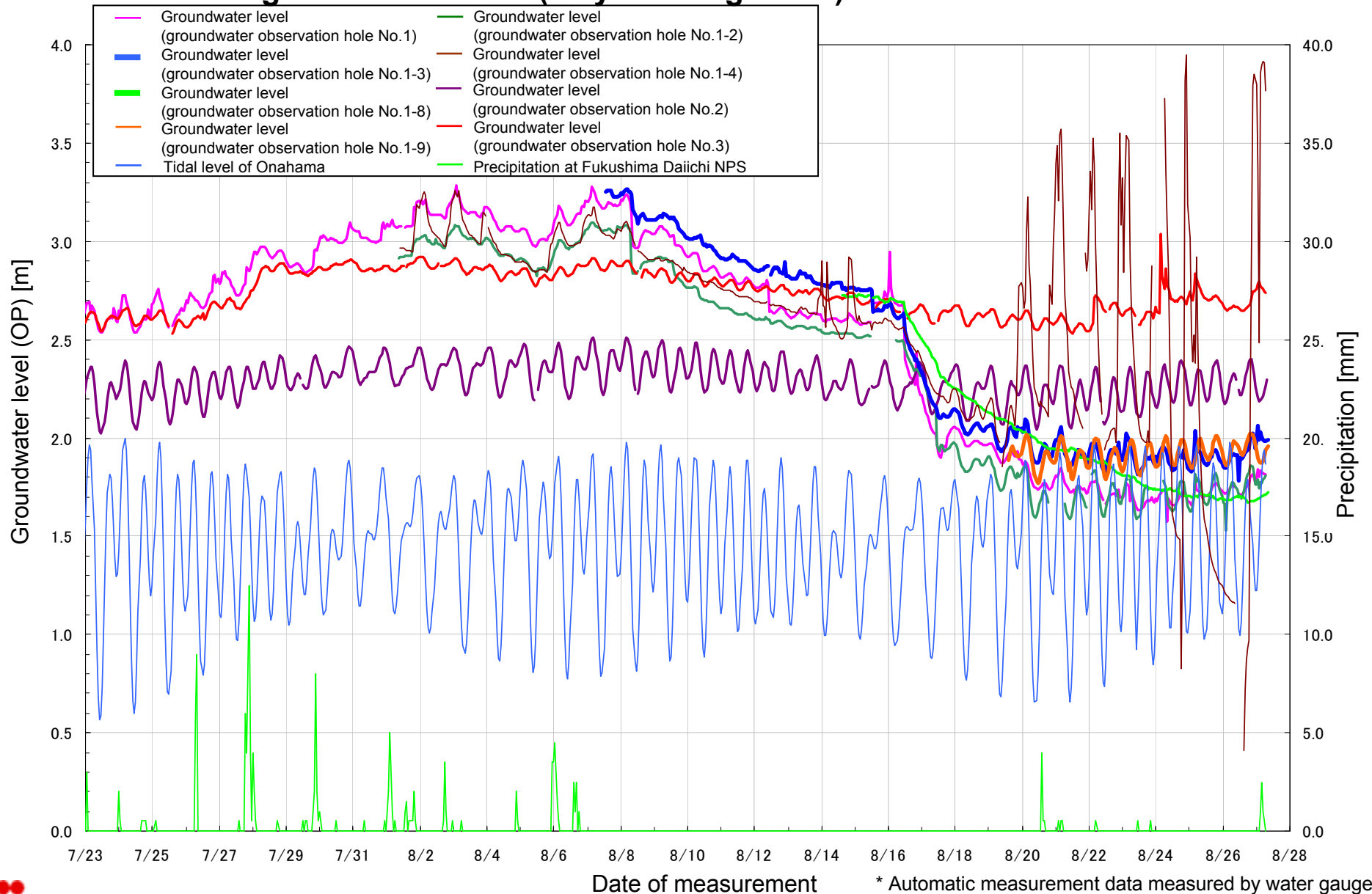


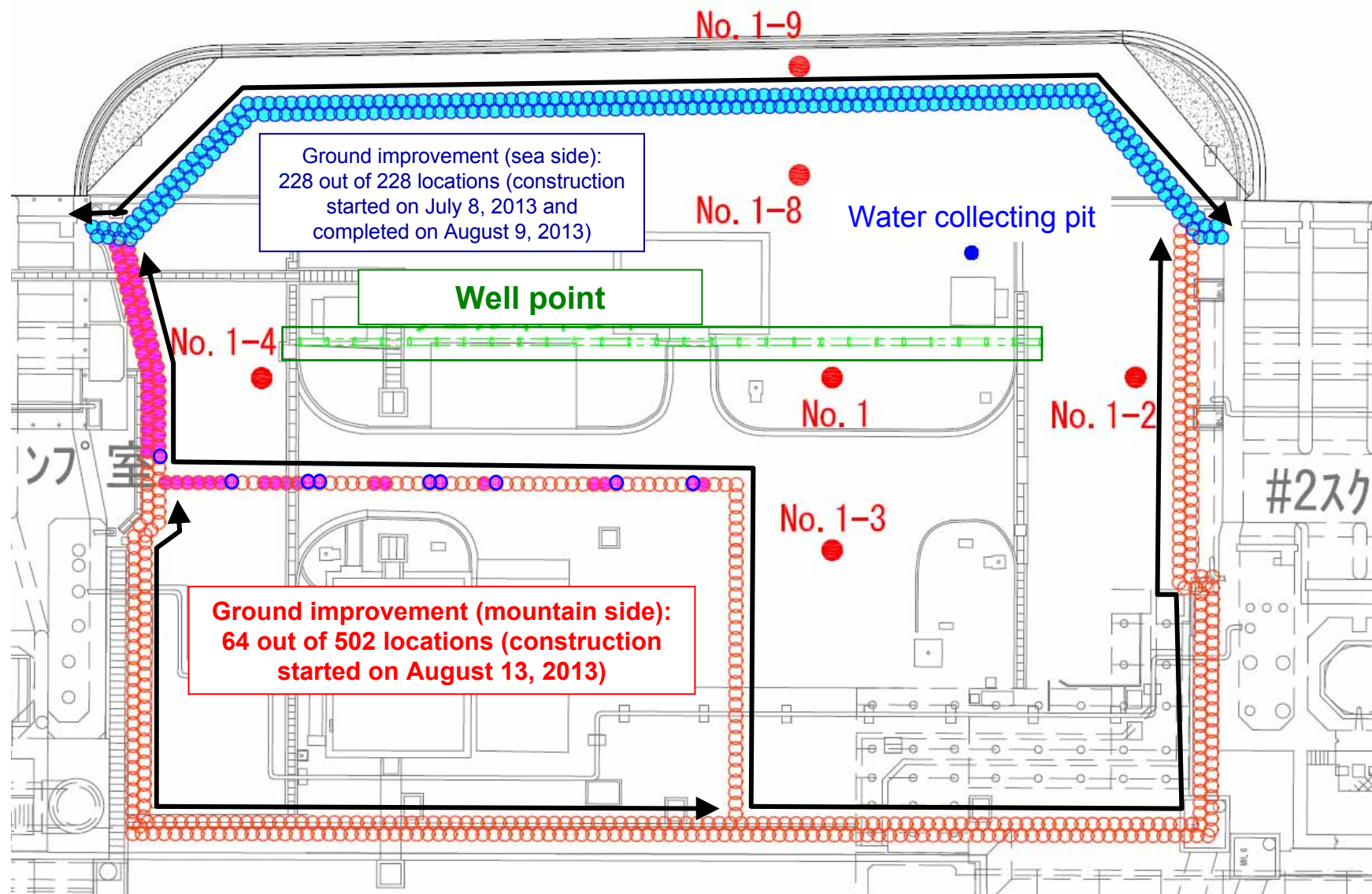
Condition of the Bank Protections between Unit 1 and 2, and Unit 3 and 4 at Fukushima Daiichi Nuclear Power Station

<Reference>
August 28, 2013
Tokyo Electric Power Company

Transition of the groundwater level (July 23 - August 27)

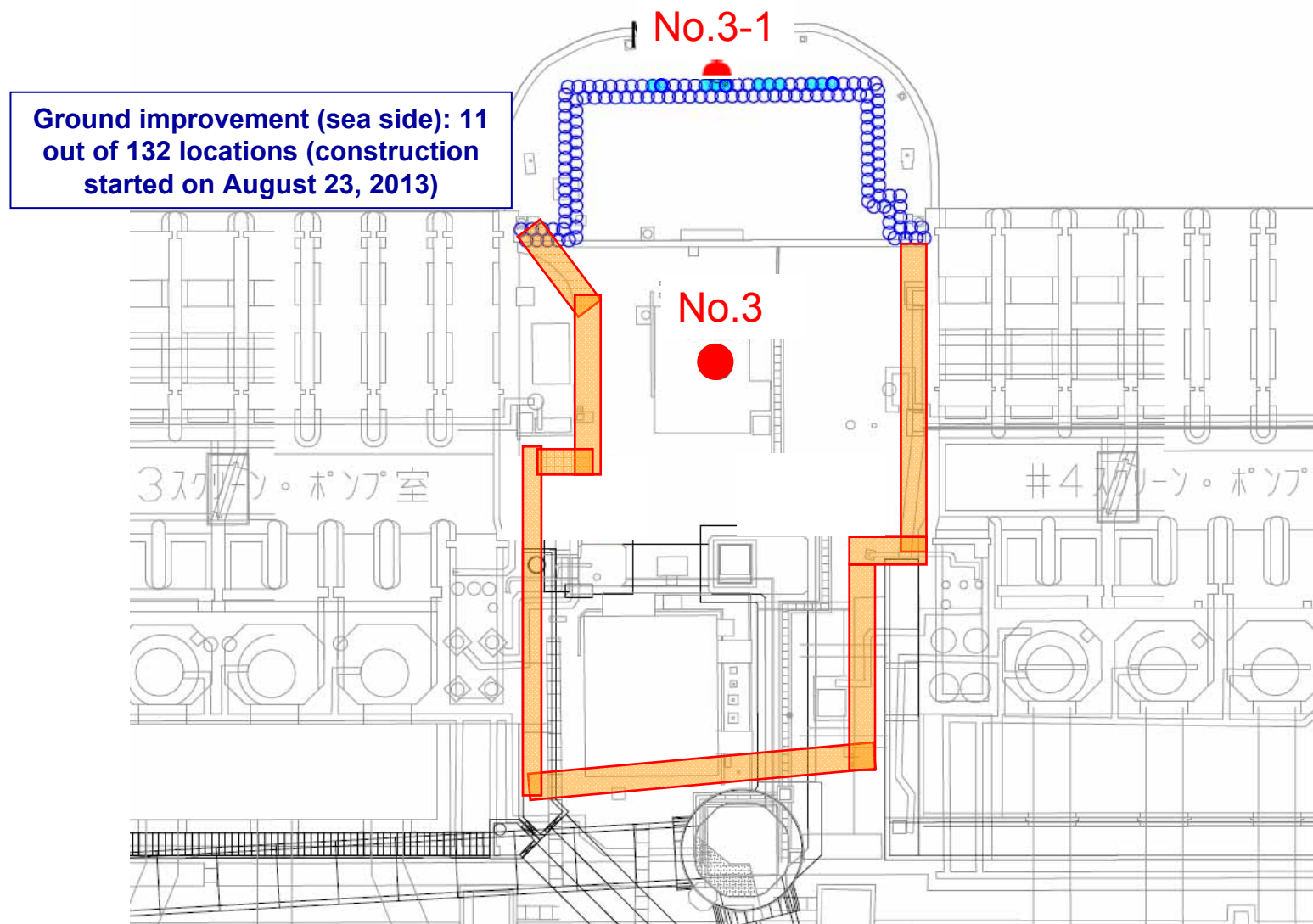


■Progress Status of Ground Improvement Construction between Unit 1 and 2 (as of the morning on August 28)



* The range of the construction is subject to change depends on the site status.

■Progress Status of Ground Improvement Construction between Unit 3 and 4 (as of the morning on August 28)



*1 The range of the construction is subject to change depends on the site status.

*2 Groundwater observation hole No.3-1 will be not in use due to the ground improvement construction.