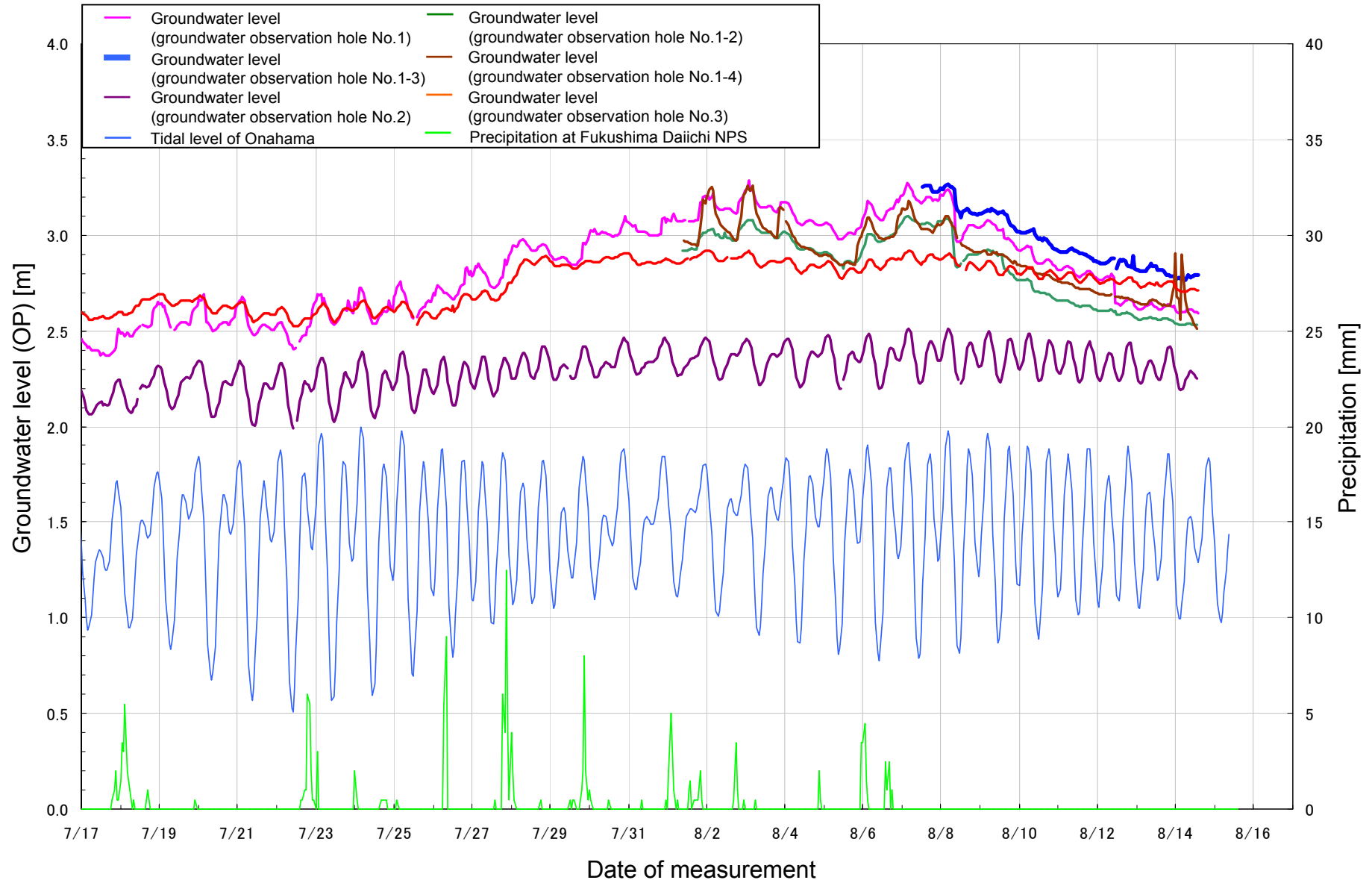


Water Level of the Groundwater Observation Hole at Fukushima Daiichi Nuclear Power Station

<Reference>
August 16, 2013
Tokyo Electric Power Company

Transition of the groundwater level (July 17 - August 14)



■ Groundwater Level of Each Groundwater Observation Hole

| | | Water level of the groundwater observation hole (O.P. m) | | | | | | | | |
|---|----------|--|--------|--------|--------|--|--|-----------------------|------|-----------------------|
| | | No.1-1 ^(Note 1) | No.1-2 | No.1-3 | No.1-4 | | | | | |
| July 9 | 10:00 AM | 1.80 | 1.95 | - | 1.92 | | | | | |
| July 11 | 10:00 AM | 1.91 ^(Note 2) | 2.04 | 2.33 | 2.03 | | | | | |
| July 16 | 10:00 AM | 1.94 | 2.35 | 2.59 | 2.34 | | | | | |
| July 18 | 8:00 PM | - (Note 3) | 3.02 | 2.87 | 2.55 | | | | | |
| July 19 | 5:00 AM | | 2.63 | 2.52 | 2.51 | | | | | |
| July 19 | 8:15 PM | | 2.59 | 2.57 | 2.50 | | | | | |
| July 20 | 7:30 PM | | 2.52 | 2.53 | 2.48 | | | | | |
| July 21 | 4:45 AM | | 2.57 | 2.56 | 2.56 | | | | | |
| July 22 | 6:30 PM | | 2.55 | 2.53 | 2.43 | | | | | |
| July 23 | 4:00 AM | | 2.66 | 2.69 | 2.63 | | | | | |
| July 23 | 7:30 PM | | 2.65 | - | 2.57 | | | | | |
| July 24 | 4:00 AM | | 2.66 | 2.69 | 2.65 | | | | | |
| July 24 | 8:00 PM | | 2.61 | 2.62 | 2.60 | | | | | |
| July 25 | 5:00 AM | | 2.69 | 2.71 | 2.65 | | | | | |
| July 25 | 6:30 PM | | 2.63 | 2.64 | 2.58 | | | | | |
| July 26 | 4:00 AM | | 2.71 | 2.70 | 2.67 | | | | | |
| July 26 | 8:00 PM | | 2.78 | 2.78 | 2.77 | | | | | |
| July 27 | 5:00 AM | | 2.81 | 2.81 | 2.81 | | | | | |
| July 27 | 7:30 PM | | 2.83 | 2.83 | 2.86 | | | | | |
| July 28 | 5:00 AM | 2.90 | 2.98 | 3.14 | | | | | | |
| July 29 | 7:30 PM | | | | | | | 2.93 | 2.92 | 2.90 |
| July 30 | 4:45 AM | | | | | | | 3.04 | 3.04 | 3.11 |
| July 30 | 7:30 PM | | | | | | | 3.05 | 3.04 | 3.04 |
| July 31 | 4:45 AM | | | | | | | 3.07 | 3.05 | 3.15 |
| July 31 | 8:30 PM | | | | | | | 3.04 | 3.03 | 3.08 |
| August 1 | 4:45 AM | | | | | | | 3.11 | 3.09 | 3.24 |
| August 1 | 7:30 PM | | | | | | | - ^(Note 4) | 3.14 | - ^(Note 4) |
| August 2 | 4:45 AM | | | | | | | - | 3.20 | - |
| August 2 | 7:45 PM | | | | | | | 3.18 | 3.18 | 3.19 |
| August 3 | 4:45 AM | | | | | | | 3.25 | 3.23 | 3.38 |
| August 3 | 7:30 PM | | | | | | | 3.17 | 3.15 | 3.20 |
| August 4 | 4:45 AM | | | | | | | 3.20 | 3.18 | 3.27 |
| August 5 | 7:30 PM | | | | | | | 3.04 | 3.04 | 3.02 |
| August 6 | 4:45 AM | | | | | | | 3.18 | 3.19 | 3.24 |
| August 6 | 7:45 PM | | | | | | | 3.19 | 3.19 | 3.20 |
| August 7 | 4:45 AM | | | | | | | 3.27 | 3.25 | 3.35 |
| August 7 | 7:45 PM | | | | | | | 3.22 | 3.19 | 3.20 |
| August 8 | 4:45 AM | | | | | | | 3.26 | 3.23 | 3.27 |
| Water level of the groundwater observation hole No.1-8 (O.P. m) | | | | | | | | Aug 10 | 2.95 | |
| | | | | | | | | Aug 13 | 2.85 | |
| | | | | | | | | Aug 14 | 2.76 | |
| | | | | | | | | Aug 15 | 2.75 | |
| Water level of the groundwater observation hole No.1-9 (O.P. m) ^(Note 5) | | | | | | | | Aug 15 | 2.15 | |

Note 1: As for the observation hole No.1-1, amount is provisional value since we cannot confirm the reference altitude due the chemical injection construction.

Note 2: The result is the reference value at the groundwater observation hole No.1-1, since it is within the range of chemical injection since July 11.

Note 3: We could not measure the groundwater observation hole No. 1-1, since the chemical injection was completed at the surrounding area.

Note 4: As for the observation hole No.1-2 and No.1-4, the measurement was temporarily suspended due to installation of a water gauge since August 1. However, the measurement has performed since August 2 as a reference.

Note 5: The groundwater level of the groundwater observation hole No.1-9 is the provisional value, since the reference altitude of the groundwater observation hole is still being confirmed.