

Commencement of Pumping up of Groundwater from the Well Point (Partial)  
between the Water Intake Channel of Unit 1 and 2 at Fukushima Daiichi Nuclear  
Power Station

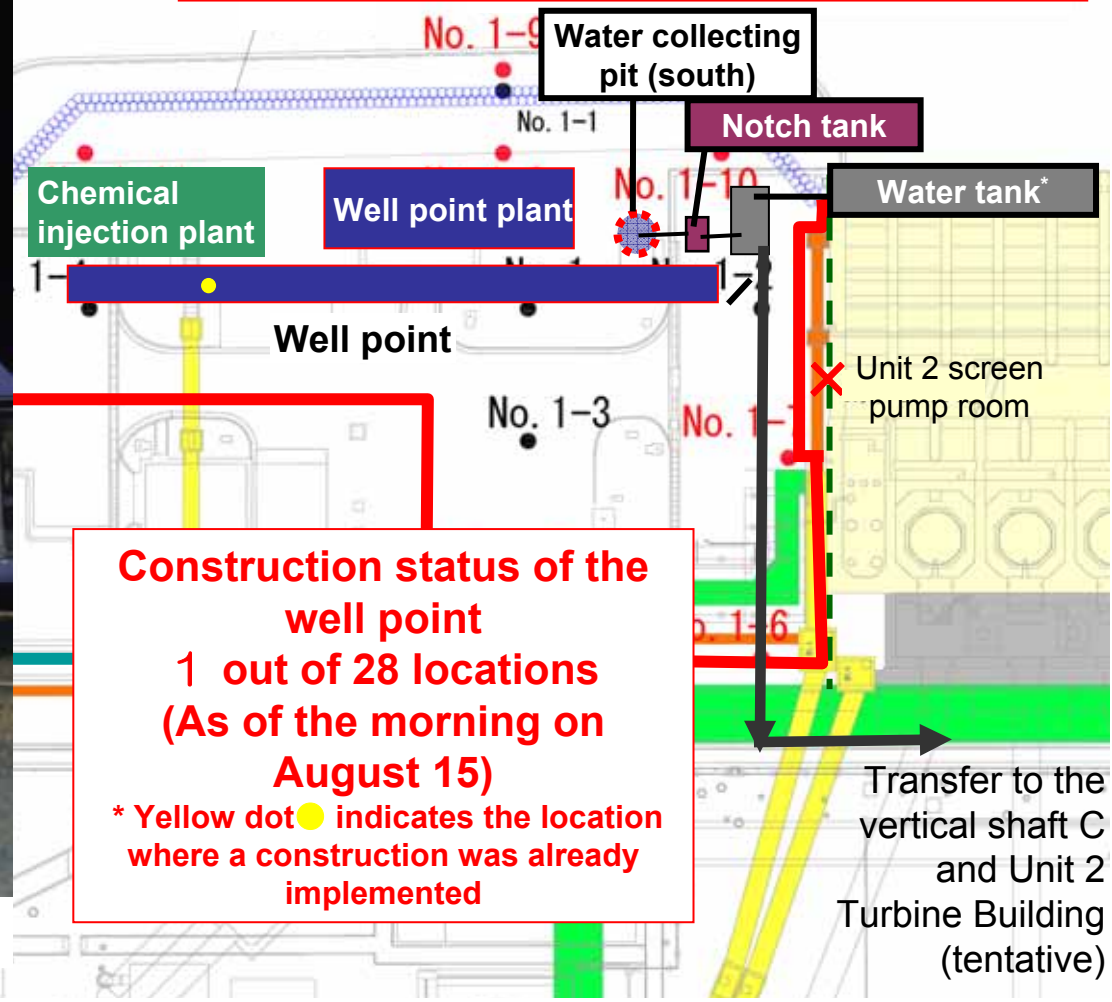
<Reference>  
August 15, 2013  
Tokyo Electric Power Company



Condition of preceding drilling

Photo taken by TEPCO on August 14, 2013

**Pumping up of groundwater from the well point (partial) was started from 11:35 AM today (on August 15).**

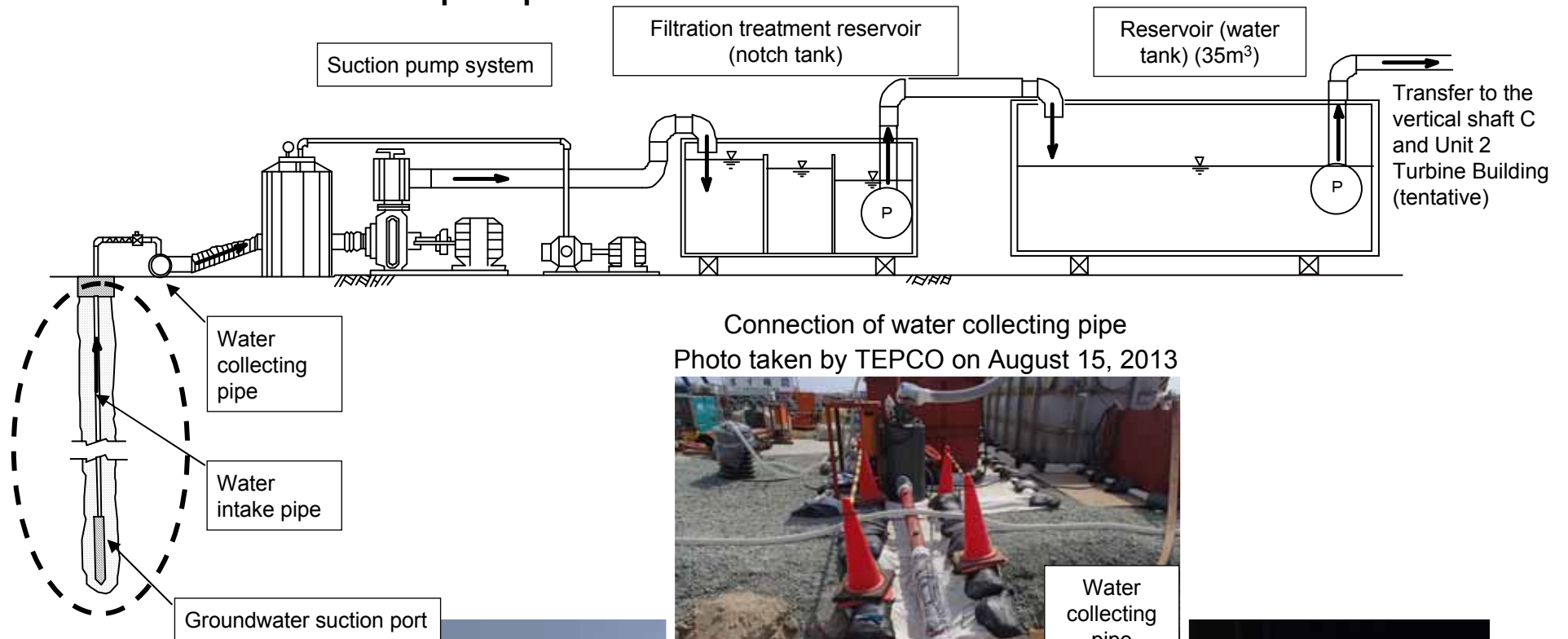


**Construction status of the well point**  
**1 out of 28 locations**  
**(As of the morning on August 15)**  
\* Yellow dot indicates the location where a construction was already implemented

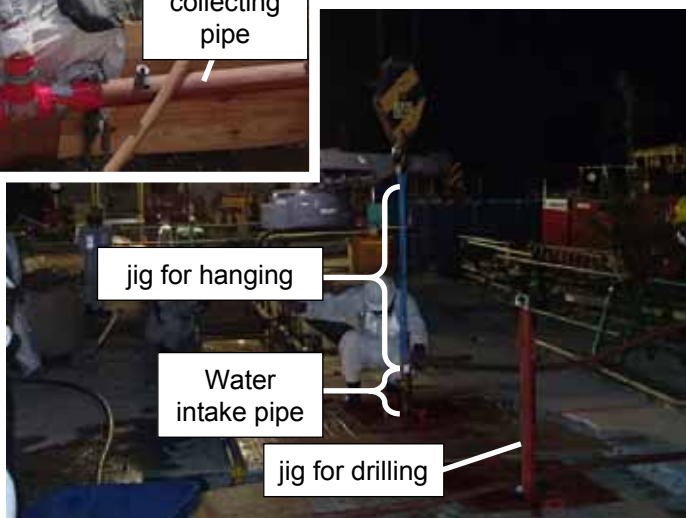
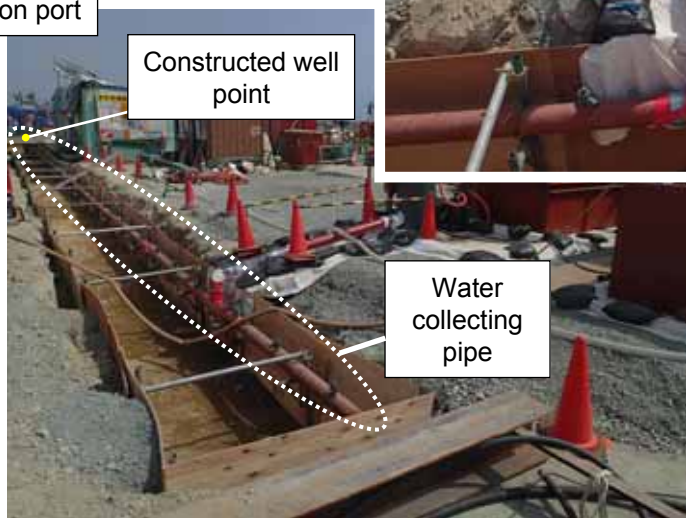
Transfer to the vertical shaft C and Unit 2 Turbine Building (tentative)

\*: Tank receiving groundwater which is pumped up from the water collecting pit and the well tank will be installed.

# Well point plant



Connection of water collecting pipe  
Photo taken by TEPCO on August 15, 2013



Installation of water collecting pipe  
Photo taken by TEPCO on August 15, 2013

Installation of suction pipe  
Photo taken by TEPCO on August 14, 2013