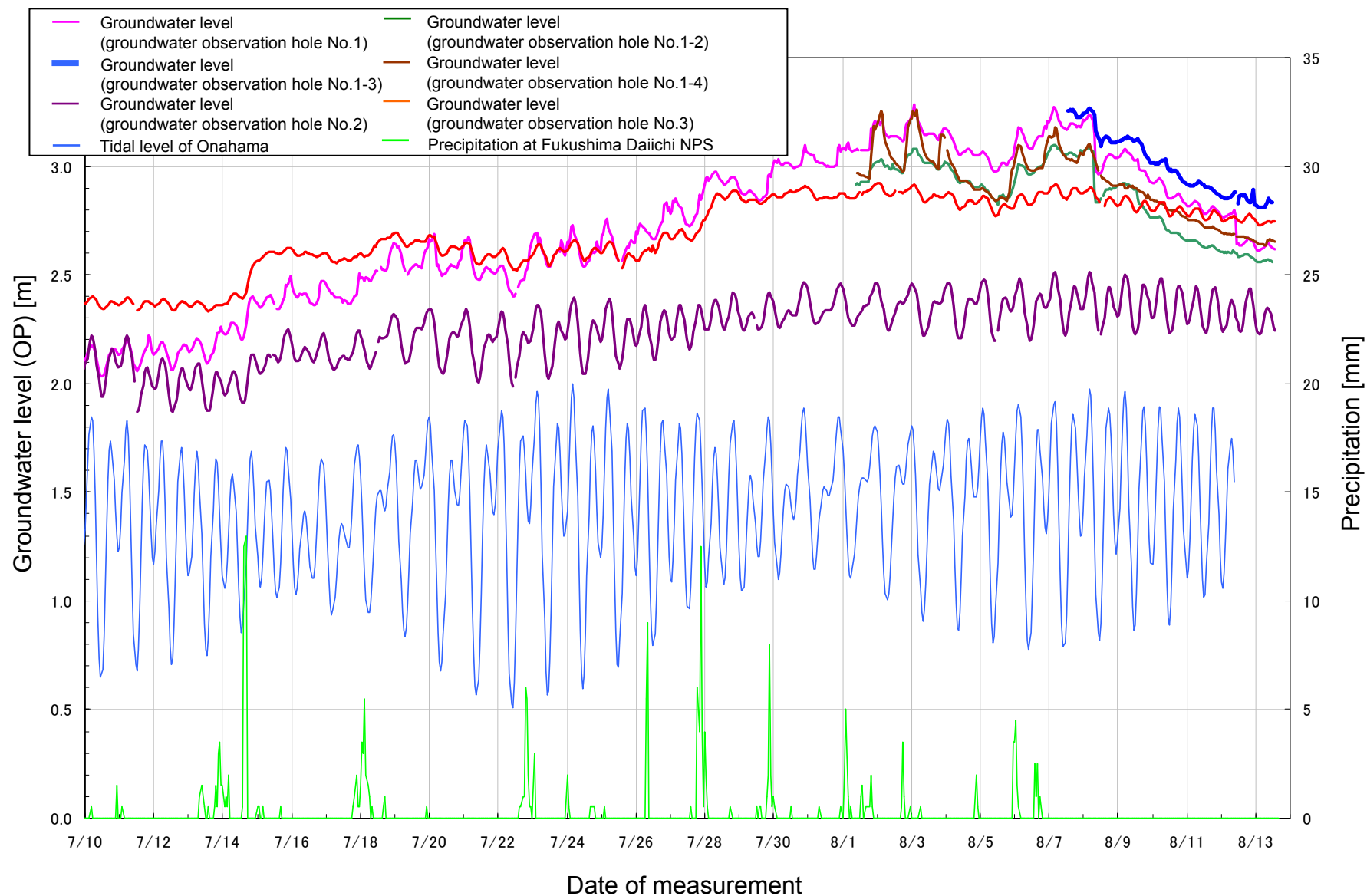


# Water Level of the Groundwater Observation Hole at Fukushima Daiichi Nuclear Power Station

<Reference>  
August 14, 2013  
Tokyo Electric Power Company

## Transition of the groundwater level (July 8 - August 13)



## ■ Groundwater Level of the Groundwater Observation Hole No.1-1 to No.1-4 and No.1-8

		Water level of the groundwater observation hole (O.P. m) <sup>(Note 1)</sup>									
		No.1-1	No.1-2	No.1-3	No.1-4						
July 9	10:00 AM	1.80	1.95	-	1.92	July 29	7:30 PM	(Note 4)	2.93	2.92	2.90
July 11	10:00 AM	1.91 <sup>(Note 2)</sup>	2.04	2.33	2.03	July 30	4:45 AM		3.04	3.04	3.11
July 16	10:00 AM	1.94 <sup>(Note 2)</sup>	2.35	2.59	2.34	July 30	7:30 PM		3.05	3.04	3.04
July 18	8:00 PM	(Note 3)	3.02	2.87	2.55	July 31	4:45 AM		3.07	3.05	3.15
July 19	5:00 AM		2.63	2.52	2.51	July 31	8:30 PM		3.04	3.03	3.08
July 19	8:15 PM		2.59	2.57	2.50	August 1	4:45 AM		3.11	3.09	3.24
July 20	7:30 PM		2.52	2.53	2.48	August 1	7:30 PM		- <sup>(Note 5)</sup>	3.14	- <sup>(Note 5)</sup>
July 21	4:45 AM		2.57	2.56	2.56	August 2	4:45 AM		-	3.20	-
July 22	6:30 PM		2.55	2.53	2.43	August 2	7:45 PM		3.18	3.18	3.19
July 23	4:00 AM		2.66	2.69	2.63	August 3	4:45 AM		3.25	3.23	3.38
July 23	7:30 PM		2.65	-	2.57	August 3	7:30 PM		3.17	3.15	3.20
July 24	4:00 AM		2.66	2.69	2.65	August 4	4:45 AM		3.20	3.18	3.27
July 24	8:00 PM		2.61	2.62	2.60	August 5	7:30 PM		3.04	3.04	3.02
July 25	5:00 AM		2.69	2.71	2.65	August 6	4:45 AM		3.18	3.19	3.24
July 25	6:30 PM		2.63	2.64	2.58	August 6	7:45 PM		3.19	3.19	3.20
July 26	4:00 AM		2.71	2.70	2.67	August 7	4:45 AM		3.27	3.25	3.35
July 26	8:00 PM		2.78	2.78	2.77	August 7	7:45 PM	3.22	3.19	3.20	
July 27	5:00 AM	2.81	2.81	2.81	August 8	4:45 AM	3.26	3.23	3.27		
July 27	7:30 PM	2.83	2.83	2.86	Water level of the groundwater observation hole No.1-8 (O.P. m)			Aug 10	2.95		
July 28	5:00 AM	2.90	2.98	3.14				Aug 13	2.85		

Note 1: The water level is the provisional value, since the height of the groundwater observation hole is still being confirmed.

Note 2: The result is the reference value at the groundwater observation hole No.1-1, since it is within the range of chemical injection since July 11.

Note 3: We could not measure the groundwater observation hole No. 1-1, since the chemical injection was completed at the surrounding area.

Note 4: As for the observation hole No.1-2 and No.1-4, the measurement was temporarily suspended due to installation of a water gauge since August 1. However, the measurement has performed since August 2 as a reference.