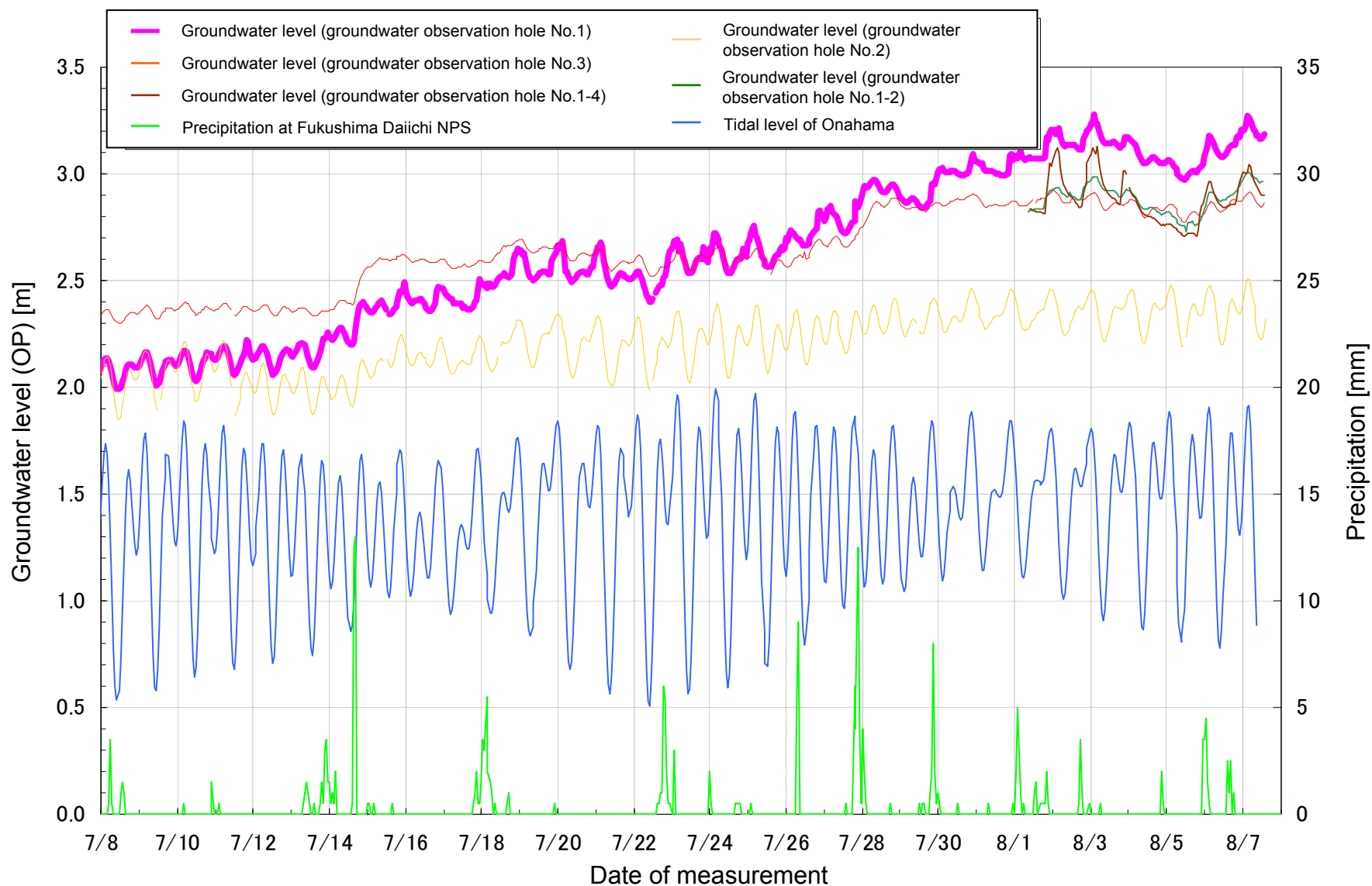


# Water Level of the Groundwater Observation Hole at Fukushima Daiichi Nuclear Power Station

<Reference>  
August 8, 2013  
Tokyo Electric Power Company

## Transition of the groundwater level (July 8 - August 7)



\* The water levels of the observation hole No.1-2 and No.1-4 are the provisional value, since the height of the groundwater observation hole is still being confirmed.

## ■ Groundwater Level of the Groundwater Observation Hole No.1-1 to No.1-4

		Water level of the groundwater observation hole (O.P. m) <sup>(Note 1)</sup>										
		No.1-1	No.1-2	No.1-3	No.1-4							
July 9	10:00 AM	1.80	1.82	-	1.83	July 28	5:00 AM	-	(Note 3)	2.77	2.87	3.01
July 11	10:00 AM	1.91 <sup>(Note 2)</sup>	1.91	1.96	1.94	July 29	7:30 PM		2.80	2.81	2.77	
July 16	10:00 AM	1.94 <sup>(Note 2)</sup>	2.22	2.22	2.25	July 30	4:45 AM		2.91	2.93	2.98	
July 18	8:00 PM	-	2.89	2.5	2.46	July 30	7:30 PM		2.92	2.93	2.91	
July 19	5:00 AM		2.74	2.39	2.44	July 31	4:45 AM		2.94	2.94	3.02	
July 19	8:15 PM		2.42	2.38	2.37	July 31	8:30 PM		2.91	2.92	2.95	
July 20	7:30 PM		2.39	2.39	2.35	August 1	4:45 AM		2.98	2.98	3.11	
July 21	4:45 AM		2.44	2.42	2.43	August 1	7:30 PM		- <sup>(Note 4)</sup>	3.03	- <sup>(Note 4)</sup>	
July 22	6:30 PM		2.42	2.39	2.30	August 2	4:45 AM		-	3.09	-	
July 23	4:00 AM		2.53	2.55	2.50	August 2	7:45 PM		3.05	3.07	3.06	
July 23	7:30 PM		2.52	-	2.44	August 3	4:45 AM		3.12	3.12	3.25	
July 24	4:00 AM		2.53	2.55	2.52	August 3	7:30 PM		3.04	3.04	3.07	
July 24	8:00 PM		2.48	2.48	2.47	August 4	4:45 AM		3.07	3.07	3.14	
July 25	5:00 AM	2.56	2.57	2.52	August 5	7:30 PM	2.91		2.93	2.89		
July 25	6:30 PM	2.50	2.53	2.45	August 6	4:45 AM	3.05		3.08	3.11		
July 26	4:00 AM	2.58	2.59	2.54	August 6	7:45 PM	3.06		3.08	3.07		
July 26	8:00 PM	2.65	2.67	2.64	August 7	4:45 AM	3.14		3.14	3.22		
July 27	5:00 AM	2.68	2.70	2.68	August 7	7:45 PM	- <sup>(Note 5)</sup>		3.08	- <sup>(Note 5)</sup>		
July 27	7:30 PM	2.70	2.72	2.73	August 8	4:45 AM	-		3.12	-		

Note 1: The water level is the provisional value, since the height of the groundwater observation hole is still being confirmed.

Note 2: The result is the reference value at the groundwater observation hole No.1-1, since it is within the range of chemical injection since July 11.

Note 3: We could not measure the groundwater observation hole No. 1-1, since the chemical injection was completed at the surrounding area.

Note 4: As for the observation hole No.1-2 and No.1-4, the measurement was temporarily suspended due to installation of a water gauge since August 1. However, the measurement has performed since August 2 as a reference.

Note 5: As for the observation hole No.1-2 and No.1-4, the measurement has not performed since 4:45 AM on August 7, since summarize of the water gauge data was completed.