

Inside Investigation of Unit 2 PCV at Fukushima Daiichi Nuclear Power Station

August 2, 2013
Tokyo Electric Power Company



東京電力

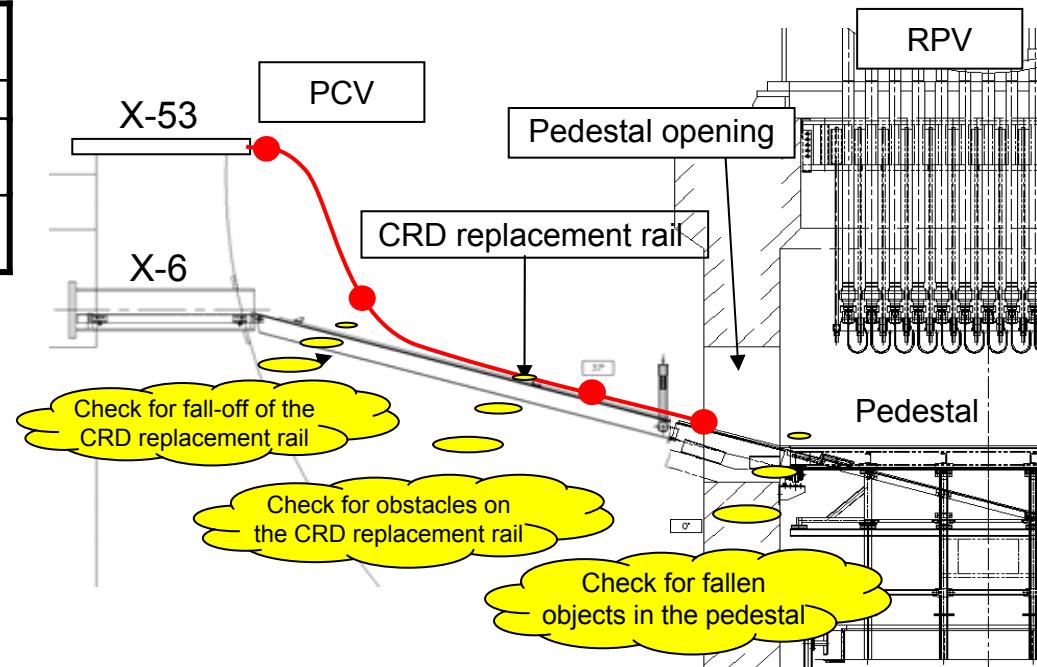
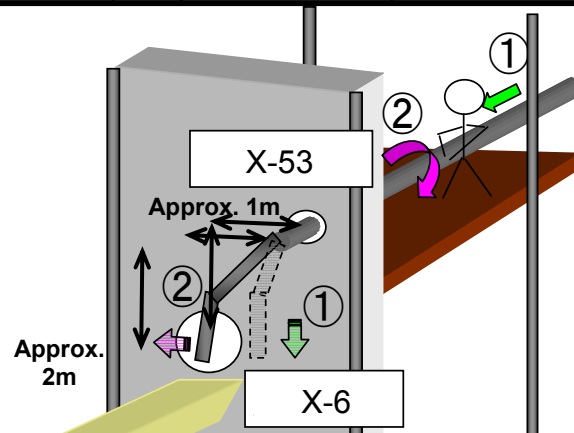
1. Overview of the Investigation of the Inside of the PCV

The CRD replacement rail and the area near the pedestal opening will be investigated by inserting investigation equipment through X-53. The results obtained will be provided as inputs for the investigation of the inside of the PCV to be performed through X-6*.

*The investigation equipment will be inserted from X-6 to the CRD replacement rail and the inside of the pedestal.

Investigation items

Scope of investigation	Investigation items	Investigation equipment
CRD replacement rail, area near the pedestal opening	Appearance	CCD camera
	Atmosphere dose	Dosimetry equipment
	Atmosphere temperature	Thermocouple thermometer

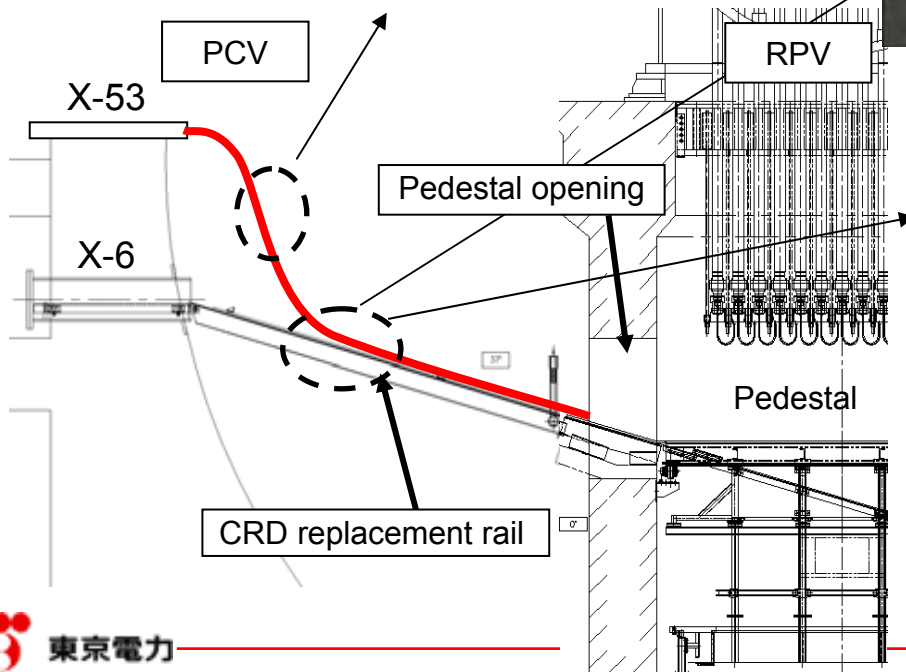
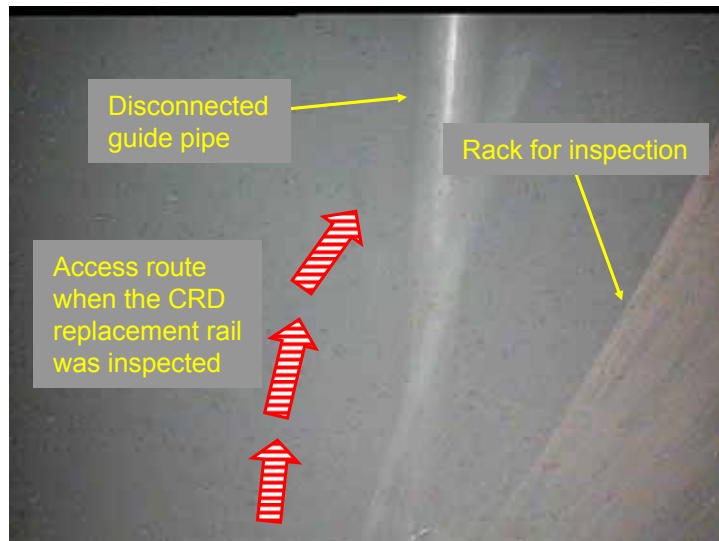


Scope of investigation of the inside of the PCV to be performed through X-53

1. Vertical direction: Bent by its own weight
2. Horizontal direction: Rotate by hand



2. Photo Inside the PCV



3. Investigation Results of the Inside of the PCV

- Although we were able to guide the investigation equipment onto the CRD replacement rail, operation avoiding obstacles took more time than expected. Therefore, the investigation equipment was collected, and investigation was stopped.
- After reviewing investigation procedures based on the investigation results obtained today, reinvestigation will be performed on August 6.
- Sampling of accumulated water in the PCV will be performed on August 5 before the reinvestigation.