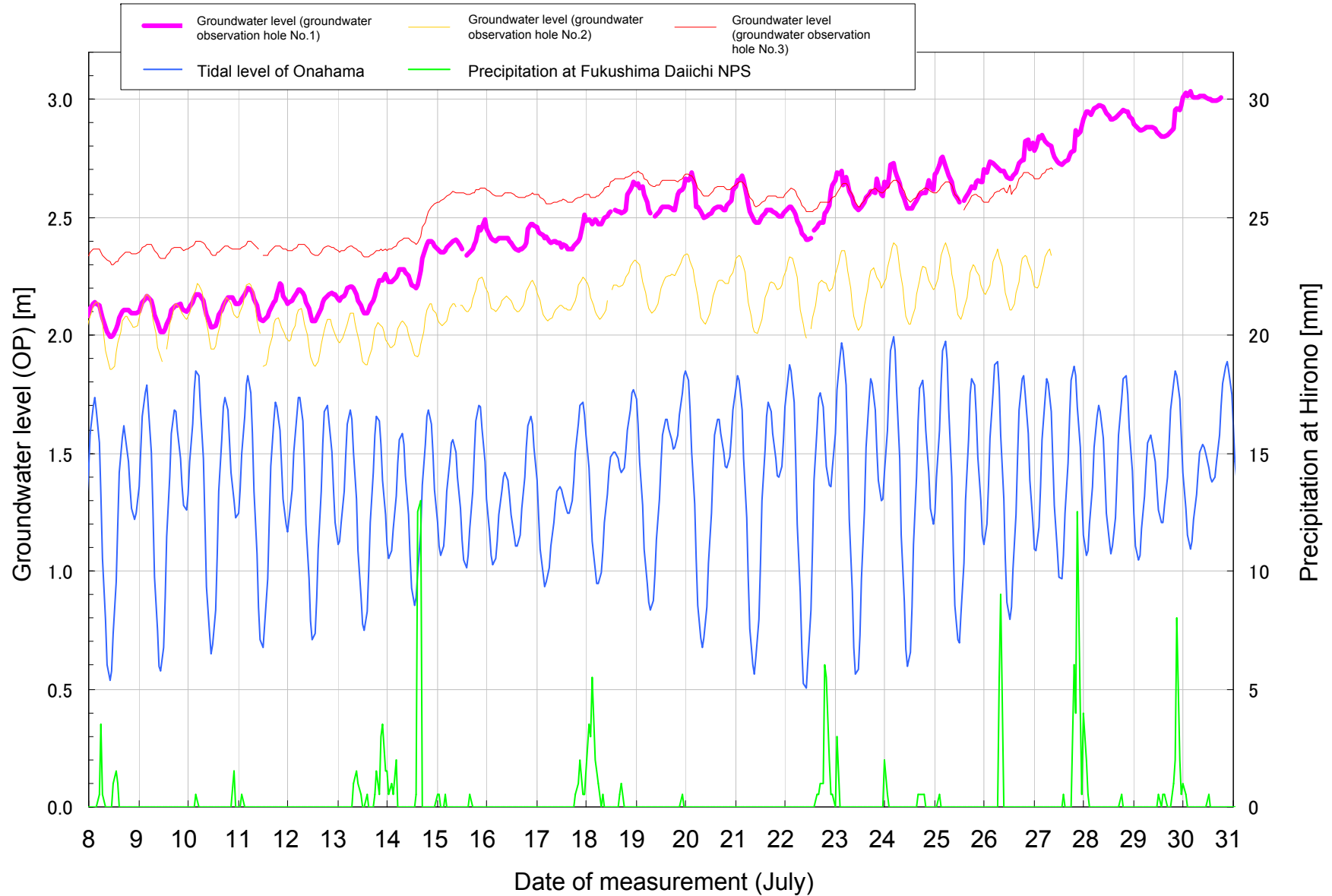
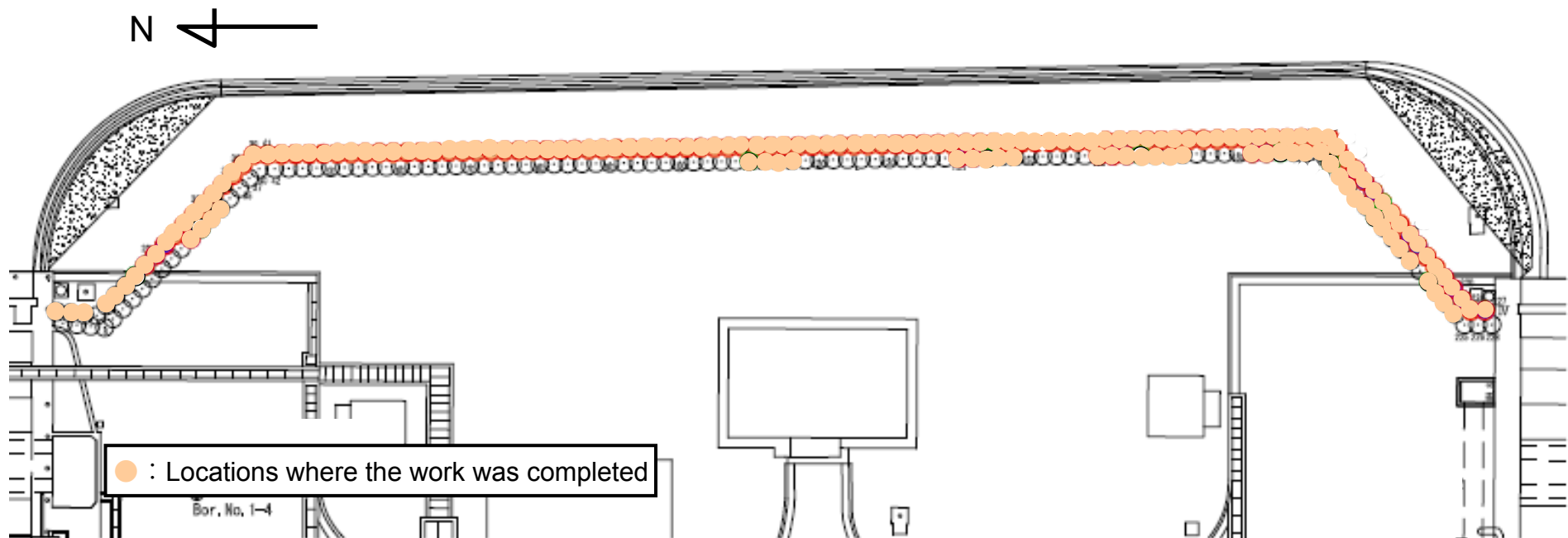


Transition of the groundwater level (July 8 - 30)

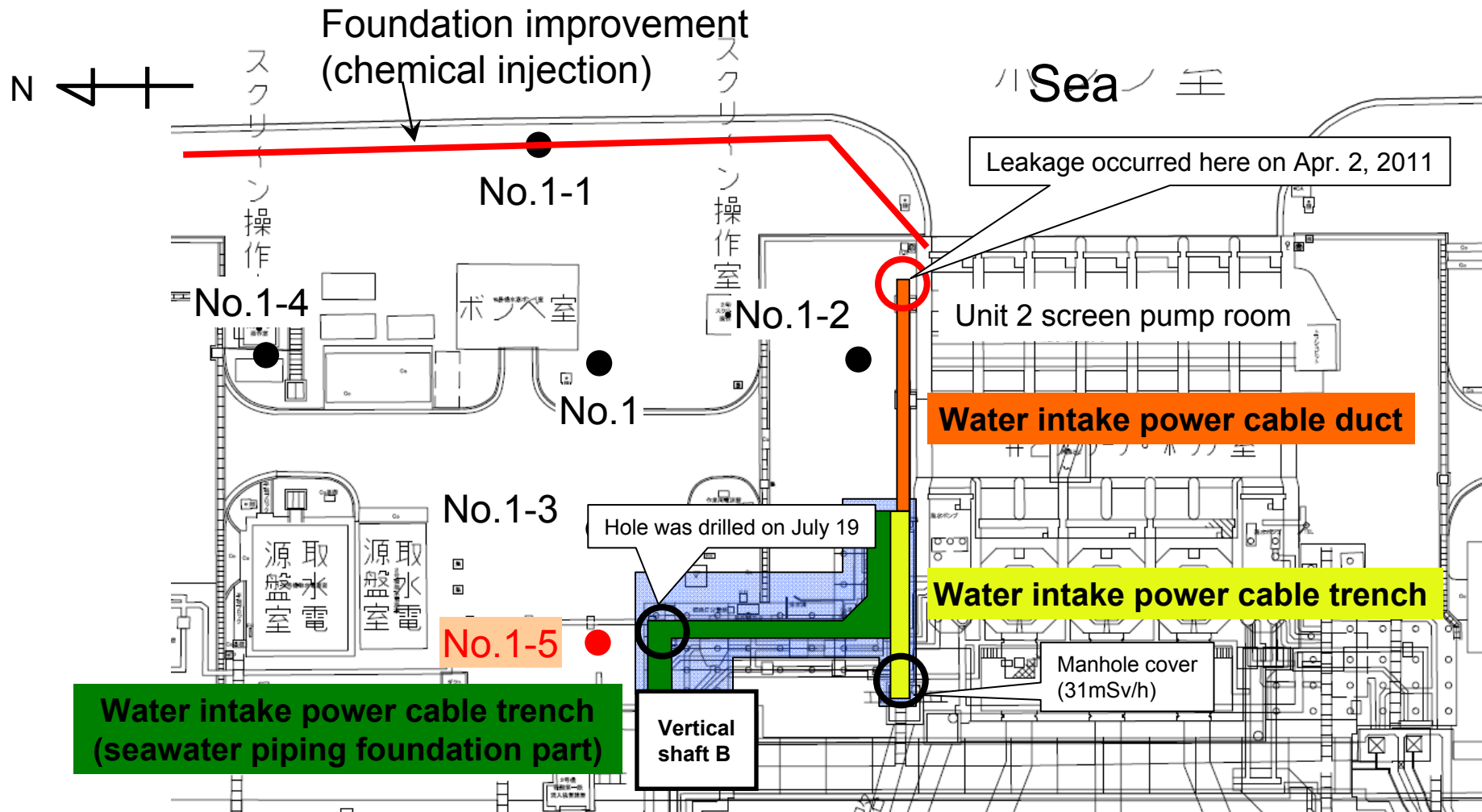


■Progress Status of Bank Protection Foundation Improvement Work between Water Intakes of Units 1 and 2

- The foundation improvement was started on July 8, and is currently underway by use of ten foundation improvement machines. (The work starts at 7:00 PM each day and ends at 7:00 AM next day.)
- By the morning of July 31, the work was completed in total of 154 locations (113 on the sea side line and 41 on the mountain side line). (The work is planned to cover a total of 228 locations (114 on the sea side line and 114 on the mountain side line))



■ Position of the groundwater observation hole No.1-5



■ This observation hole locates at approx. 15m from the observation hole No.1-3 to the mountain side (near the vertical shaft B at the seawater piping trench).

■ Dose Rate Transition of Boring Core of the Grounwater Observation Hole No.1-5 (Provisional Value)

- Dose rate measurement of boring core (soil) was performed at the groundwater observation hole No.1-5 (near the power cable trench of the groundwater observation hole No.1-3). It is considered that each core is affected by the adjacent core of high dose rate (please refer the note below), so we will remeasure them with a space between

