

< Reference >

# Results of Soundness Inspection of Unit 2 TIP Guide Pipe (1st Day)

July 8, 2013

Tokyo Electric Power Company

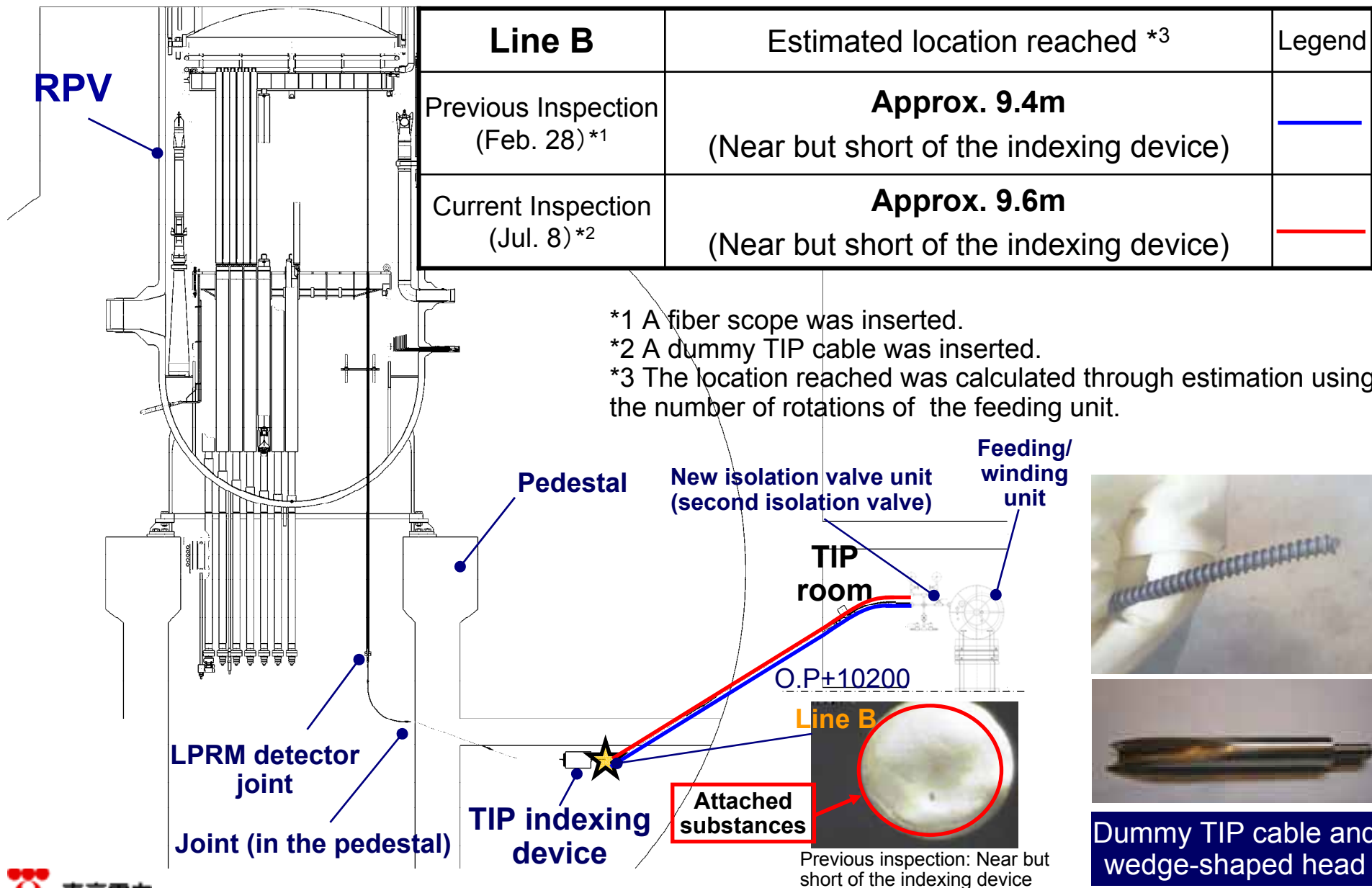


東京電力

---

TEPCO

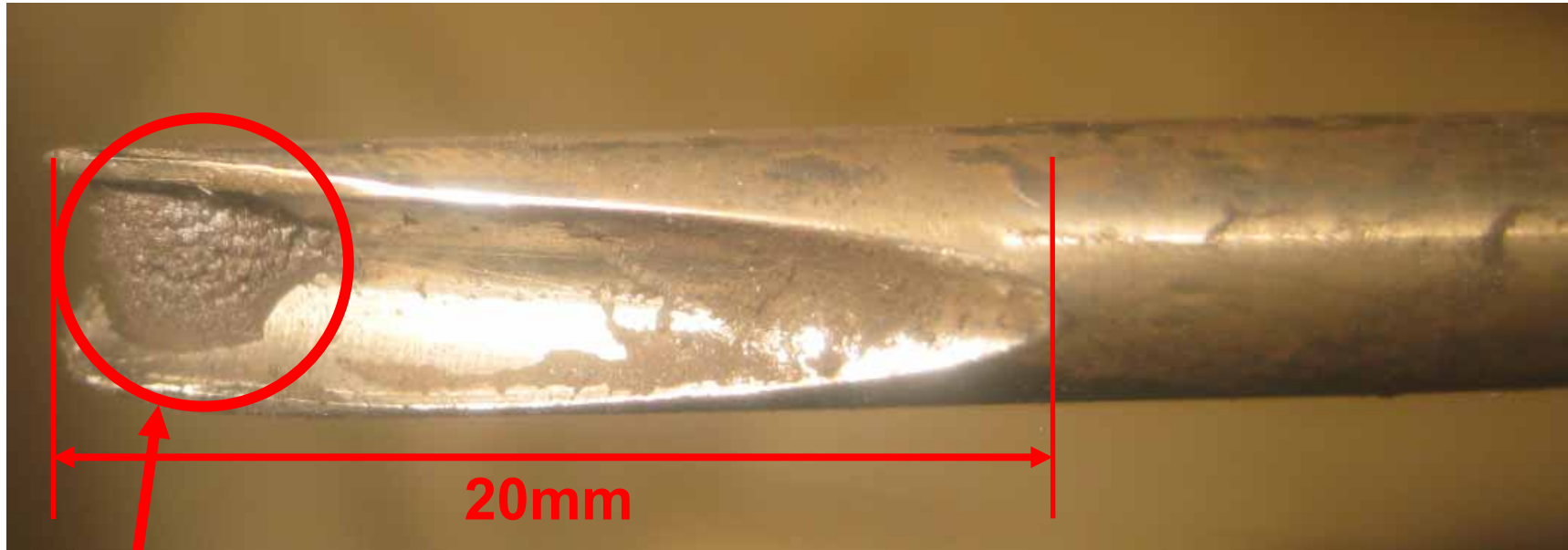
# 1-1. Contents of Work



## 1-2. Conditions of Attached Substances (Photo)

2

### ■ Dummy TIP cable head



- After the dummy TIP cable was pulled out, attached substances were found on the head.  
 $\gamma$  -ray: 5.0mSv/h,  $\beta$  - and  $\gamma$  -rays: 200mSv/h

- Radiation exposure received by workers  
Highest dose: 0.97mSV (Planned dose: 3mSV)
- Results
  - The dummy TIP cable was inserted and reached approx. 9.6m from the second isolation valve inlet flange of Line B. Insertion of the cable became impossible at the same location as in the previous inspection.
  - After the dummy TIP cable was pulled out, attached substances were found on the head.  
( $\gamma$ -ray: 5.0mSv/h,  $\beta$ - and  $\gamma$ -rays: 200mSv/h)
  - Inspection of Line B was completed. Inspection of Line D will be conducted tomorrow.

# 3. Work schedule

Month and Date	July																				
	6	7	8	9	10	11	12	13	14	15	16	17	18	19	20	21	22	23	24	25	26
Scheduled and completed work			Line B																		
				Line D																	
						Line C															
													Line A								

- Inspection of each line is expected to require 1 to 3 days. (3 days at the maximum depending on how clogged the guide pipe is.)