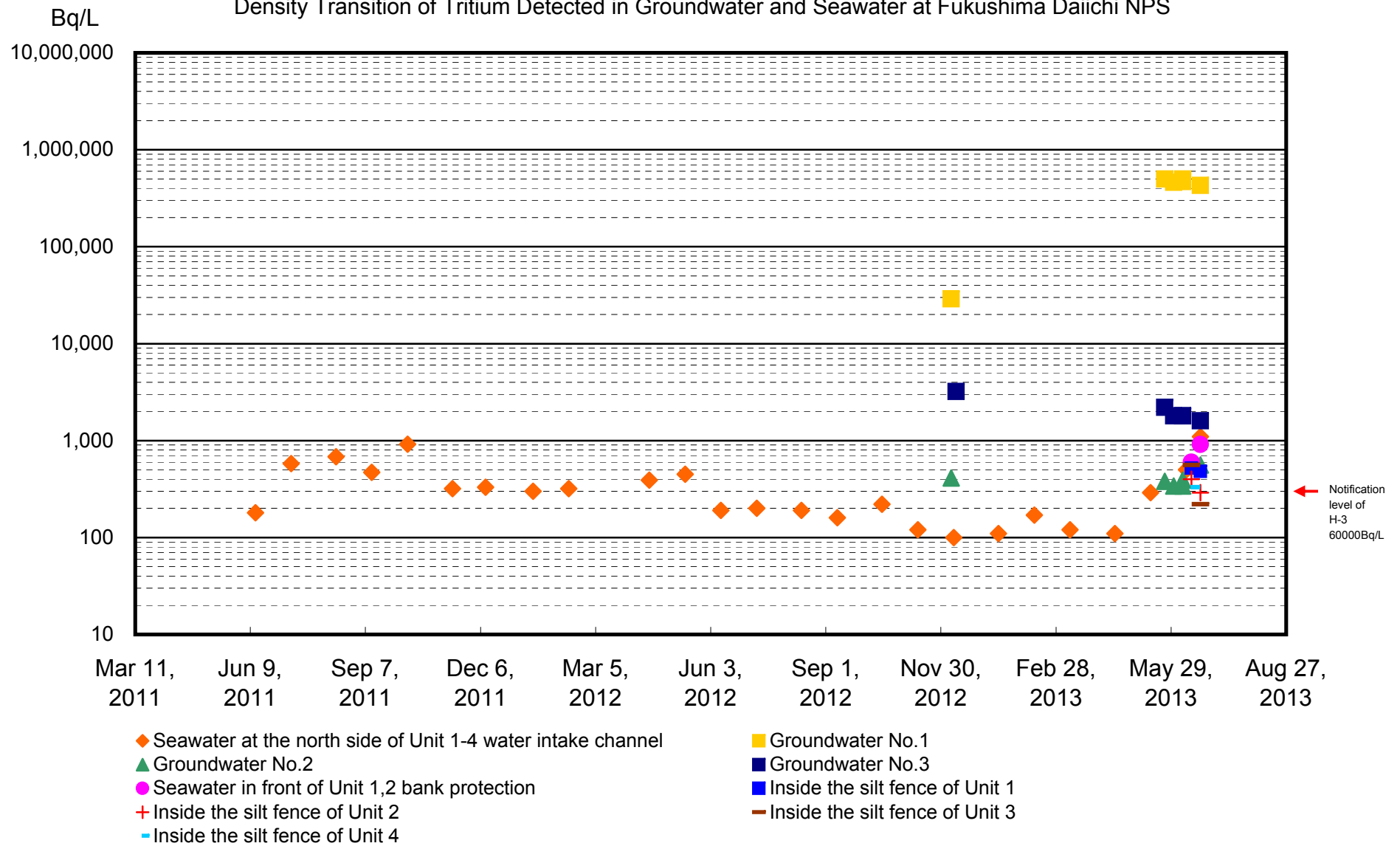
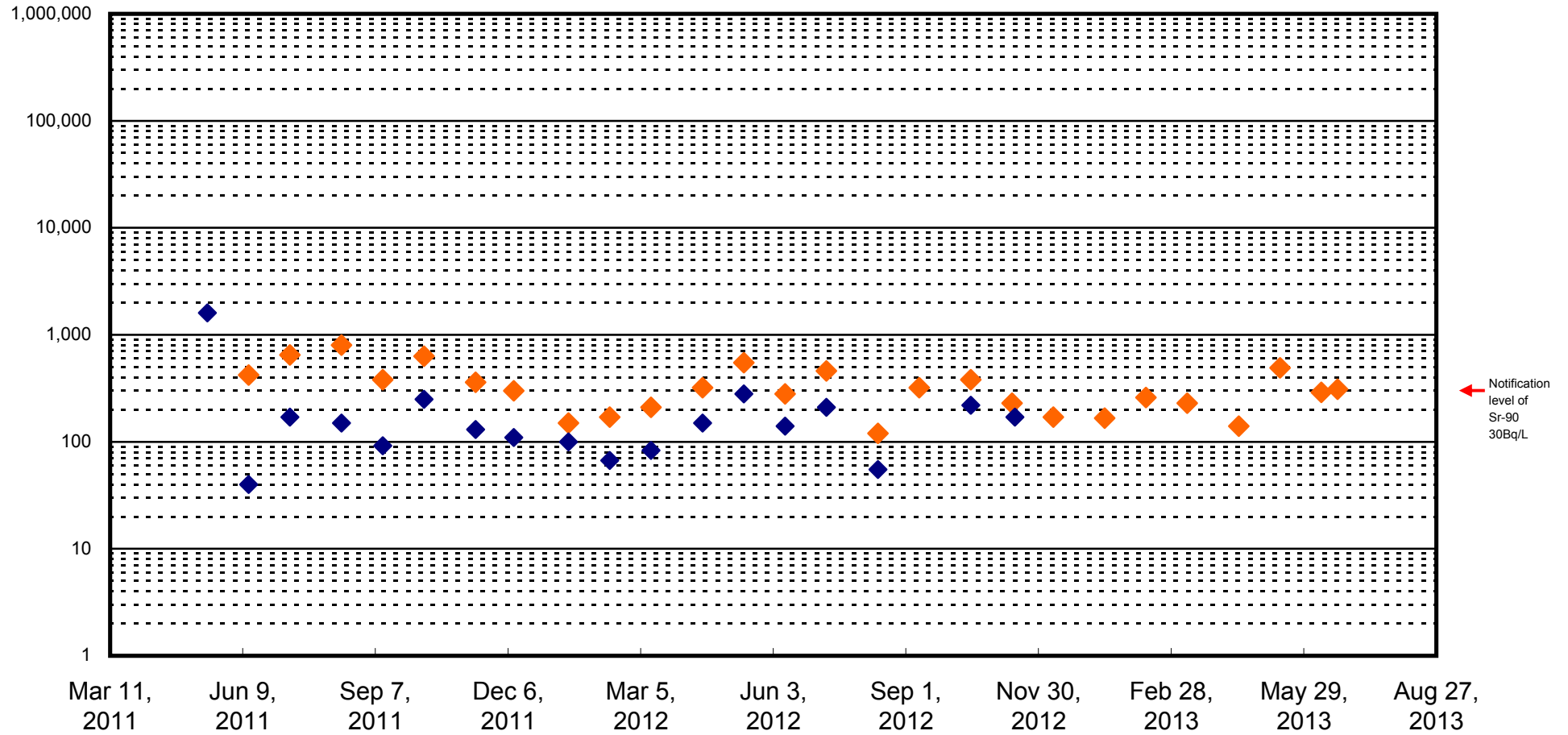


Density Transition of Tritium Detected in Groundwater and Seawater at Fukushima Daiichi NPS



Bq/L Density Transition of Strontium and All β Detected in Groundwater and Seawater at Fukushima Daiichi NPS



- ◆ North side of Unit 1-4 water intake channel All β
- ◆ North side of Unit 1-4 water intake channel Sr-90