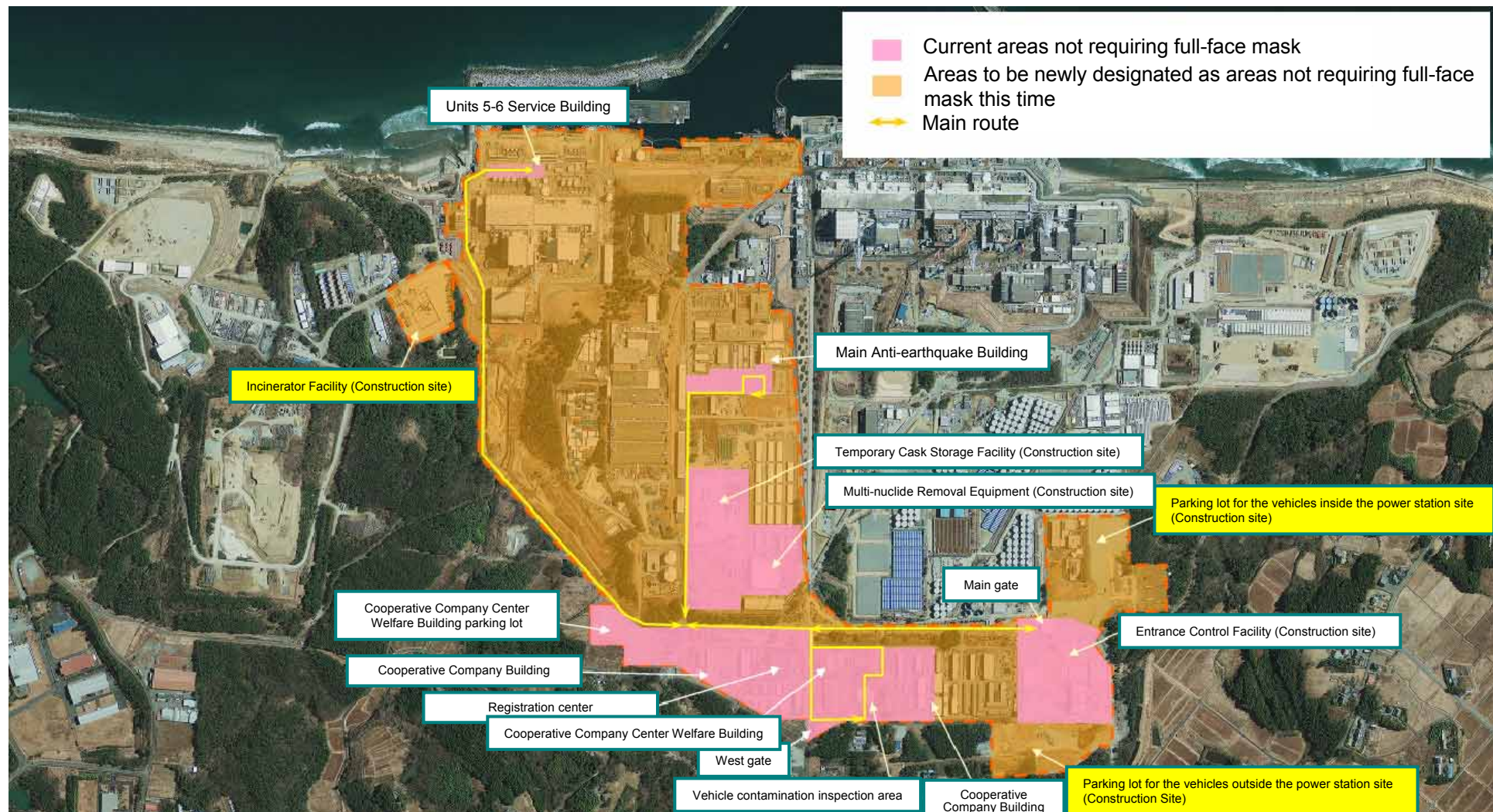


# Expansion of the Areas not Requiring Full-face Mask in Fukushima Daiichi NPS

<Reference>

May 24, 2013

Tokyo Electric Power Company





<Areas not requiring full-face mask in Fukushima Daiichi NPS>

**Areas within the dotted line excluding the surrounding area of Unit 1-4, the tank area and the debris storage area will be newly designated as areas not requiring full-face mask from May 30.**

Since March 12, 2011, we have required the workers to wear full-face masks in the whole area of Fukushima Daiichi Nuclear Power Station except for the Main Anti-earthquake Building or the lounges in reaction to an increase of the radioactivity density in the air. However, the areas where the radioactivity density in the air is confirmed to be less than the level requiring full-face mask sequentially designated as areas not requiring full-face mask for the purpose of reducing burden on workers and improving workability while ensuring appropriate radiation control.

<Classification of the required mask in the site of Fukushima Daiichi NPS>

	<b>Inside Unit 1-4 Buildings and the surrounding buildings, <math>\beta</math>-ray area</b>	<b>Areas other than areas not requiring full-face mask</b> (Surrounding area of Unit 1-4, debris storage area, etc.)	<b>Areas not requiring full-face mask</b> (Outdoor areas such as surrounding area of Unit 5 and 6, around the Main Anti-earthquake Building, around the Cooperative Company Center Welfare Building and the Cooperative Company Building, around the Main gate)
Works handling highly radioactive dust	Full-face mask	Full-face mask or half-face mask + goggle	Full-face mask or half-face mask + goggle 
Other works	Full-face mask	Half-face mask	Disposal dust mask 

\* Full-face mask and half-face mask with particle filtration efficiency of more than “99.9%” and disposal dust mask with particle filtration efficiency of more than “95%” is required. The workers who work in areas where the radioactivity density in the air is confirmed to be less than  $1 \times 10^4$ Bq/kg (currently, areas around the main gate and the Entrance Control Facility) can use surgical mask.

The use of mask in the areas not requiring full-face mask is classified into two. Full-face (half-face) mask is required during the work handling highly radioactive dust, and disposal dust mask is required during the other work in order to ensure safety and appropriate operation control of the areas in accordance with the regulation related to ionizing radiation during decontamination.