

# **Results of Investigation of the Personnel Access Lock Room on the First Floor of Unit 1 Reactor Building at Fukushima Daiichi Nuclear Power Station**

**April 9, 2013**

**Tokyo Electric Power Company**



**東京電力**

---

# Overview of the Investigation

---

## ■ Purpose

Measure the ambient dose rate and investigate the surrounding area of the PCV penetration in the personnel access lock room in the Reactor Building via a robot. The results obtained will be utilized for the future PCV investigation and consideration of repair methods.

## ■ Investigation items

Investigation of the personnel access lock room on the first floor of Unit 1 Reactor Building

- Dose rate measurement
- Visual inspection (Conditions of the PCV penetration, the floor and the ceiling)
- Measurement of temperature and humidity

## ■ Workers involved

TEPCO employees: 8 (4 at the site and 4 at the Main Anti-earthquake Building)

Cooperative company employees: 3 (at the Main Anti-earthquake Building)

## ■ Equipment used

Remotely controlled robot FRIGO-MA: 1, Packbot: 1

## ■ Day and time of investigation

Tuesday, April 9

11:29 AM: Robot entered the Reactor Building

2:21 PM: Robot left the Reactor Building

## ■ Maximum radiation exposure dose

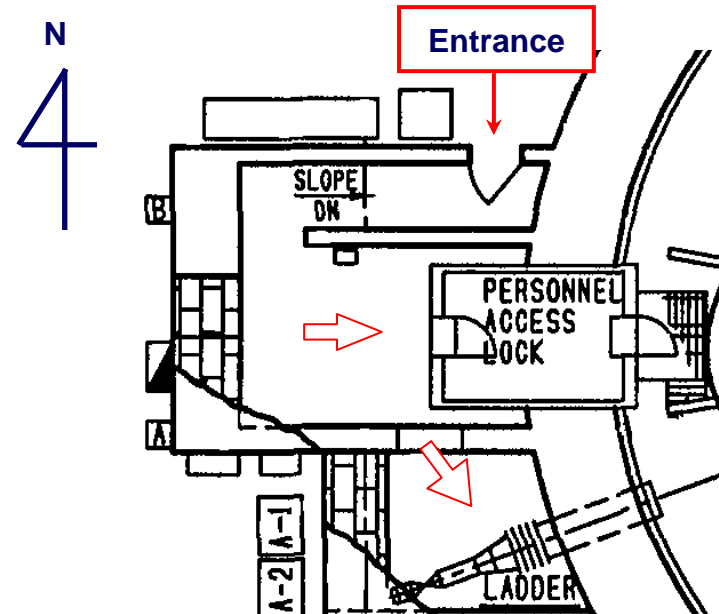
Workers: 0.72mSv (Planned dose: 7.0mSv)

Robots: FRIGO-MA: 57mSv, Packbot: 210mSv



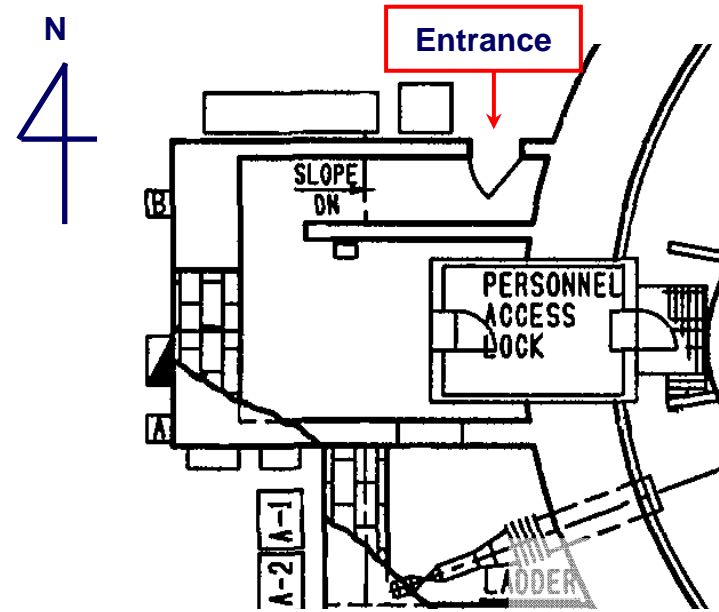
**FRIGO-MA**

# Condition of the Personnel Access Lock Room (Full-view)



# Condition of the Personnel Access Lock Room (Ceiling)

Ceiling



Ceiling



Ceiling

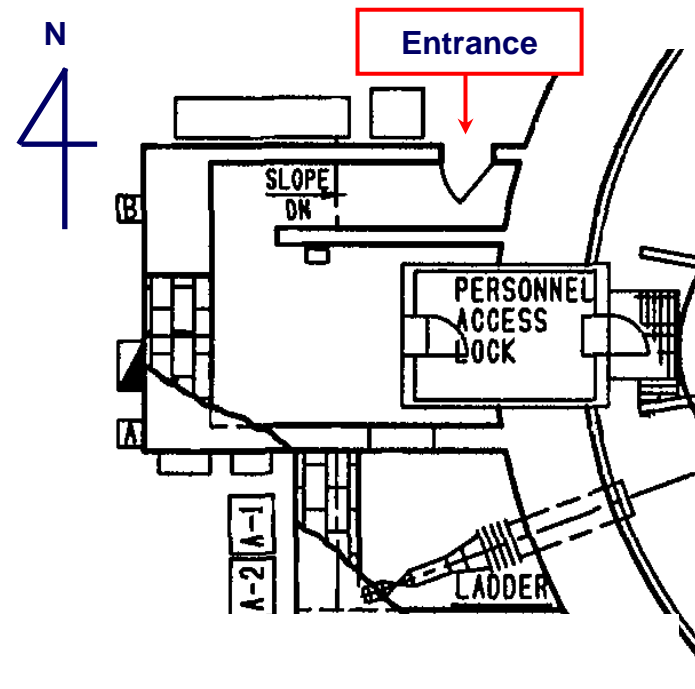


# Condition of the Personnel Access Lock Room (Floor)

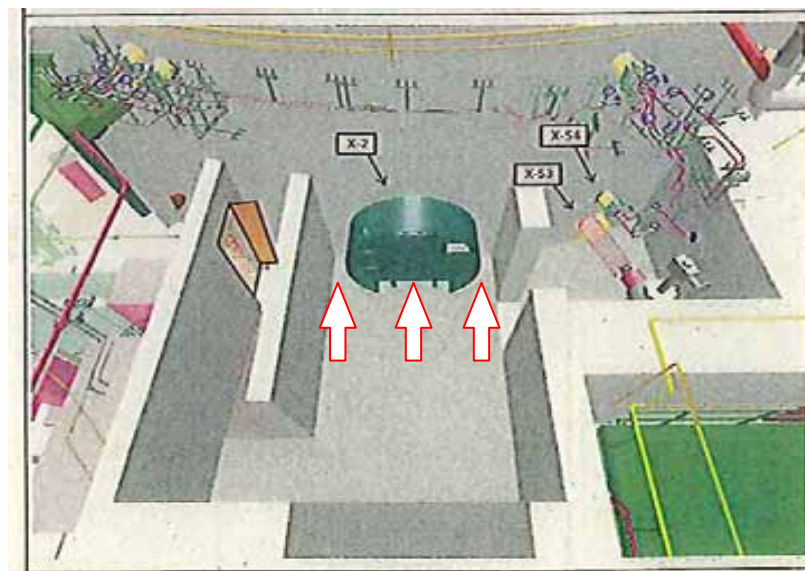
Floor



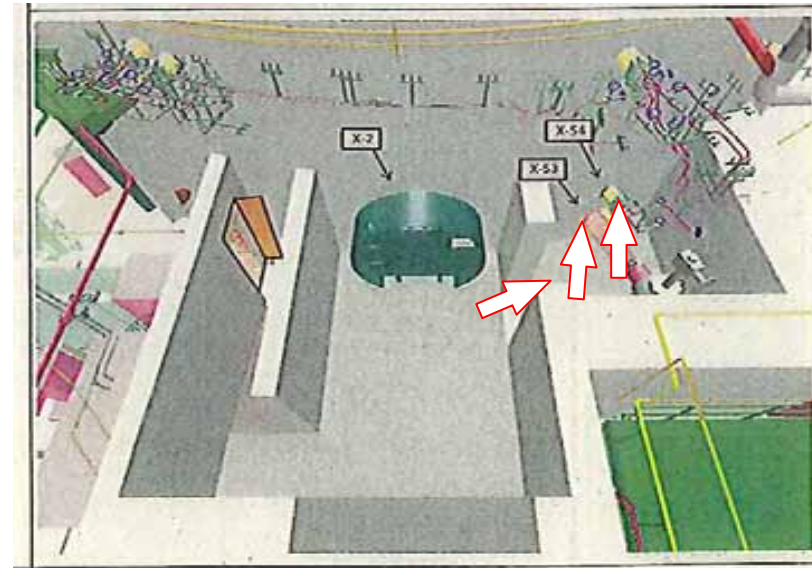
Floor



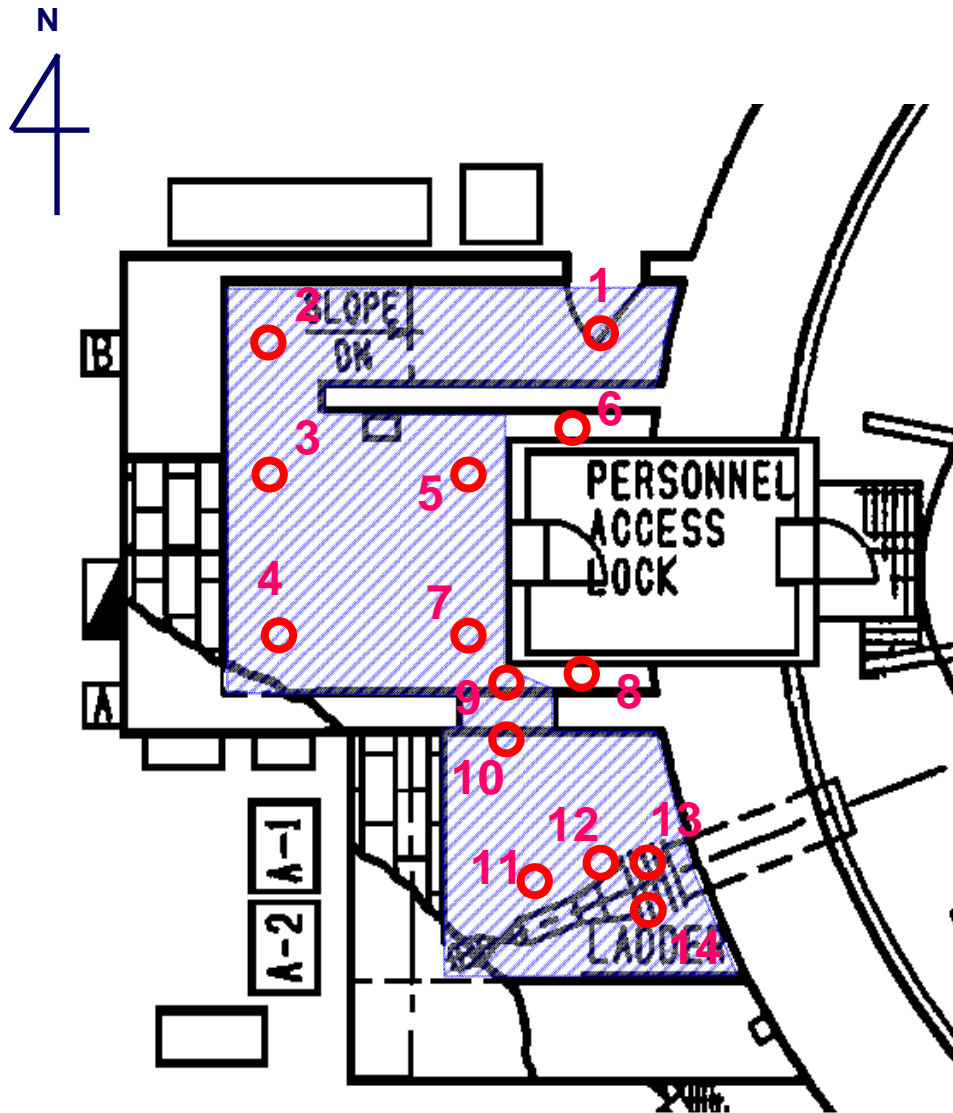
## Condition of the Personnel Access Lock Room (Personnel Access Lock)



# Condition of the Personnel Access Lock Room (Penetration)



# Ambient Dose Rates in the Personnel Access Lock Room



Height	Dose rate [mSv/h]		Remarks
	0.35 m	1.90 m	
1	2	-	
2	6	9	
3	8	8	
4	4	4	
5	5	5	
6	-	10	
7	11	10	
8	-	10	
9	19	6.6	
10	34	10.0	
11	130	-	Near the floor
12	2100	-	Near the floor
13	-	110	On the pipe
14	-	230	On the pipe

 : Scope of investigation by the robot

Inside the personnel access lock room  
 Temperature: 14 , Humidity: 50%