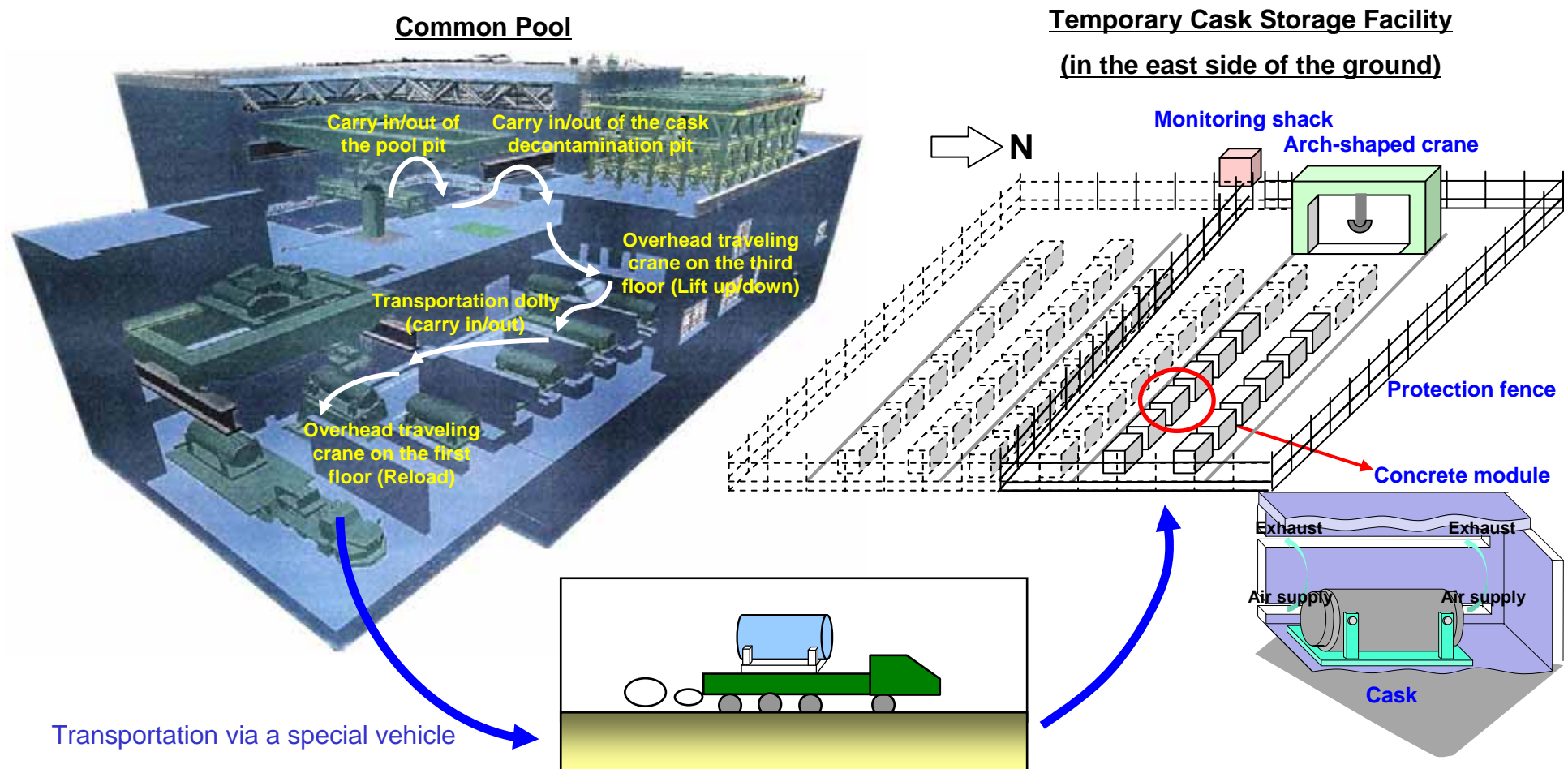


Transportation of a Dry Storage Cask from the Common Pool Building to the Temporary Dry Cask Storage Facility in Fukushima Daiichi Nuclear Power Station

April 4, 2013
Tokyo Electric Power Company

Transportation of a Dry Storage Cask to the Temporary Dry Cask Storage Facility

Today (April 4), a dry storage cask inspected in the Common Pool Building has been transported to the Temporary Cask Storage Facility in Fukushima Daiichi Nuclear Power Station.



Cask Transportation via a Trailer



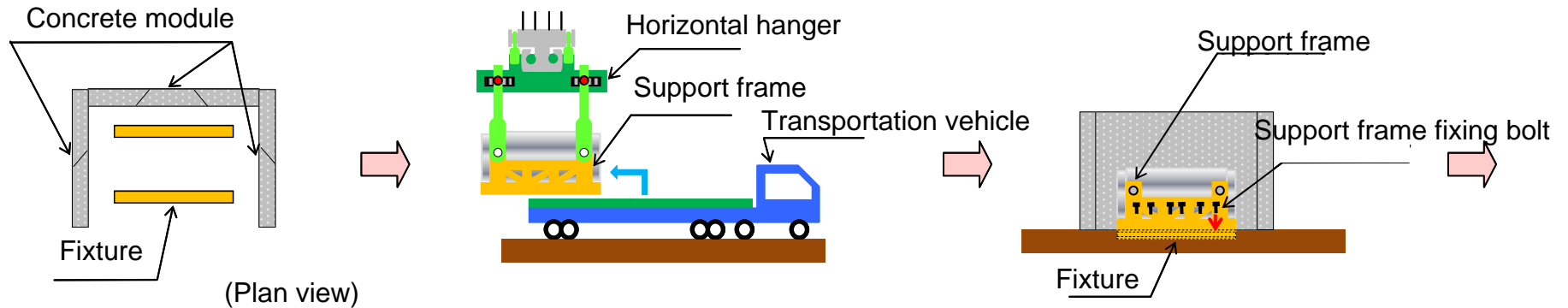
Cask being carried out of the Common Pool Building



Cask being transported

Photos taken on April 4, 2013 by TEPCO

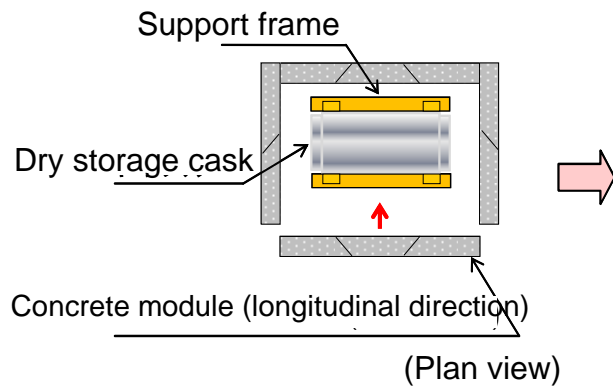
Dry Storage Cask Installation in the Concrete Module



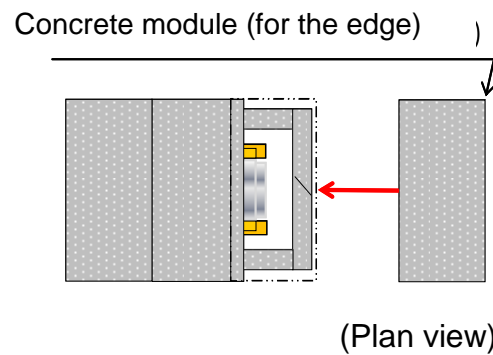
1. Installation of walls on three sides
(Already completed)

2. Cask transportation
(Done today)

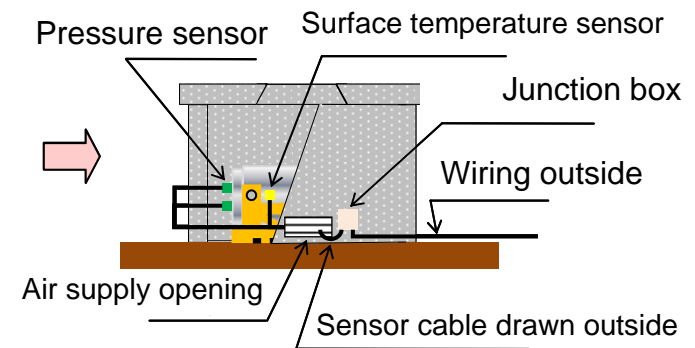
3. Cask installation
(Done today)



4. Wall installation
(Done today)

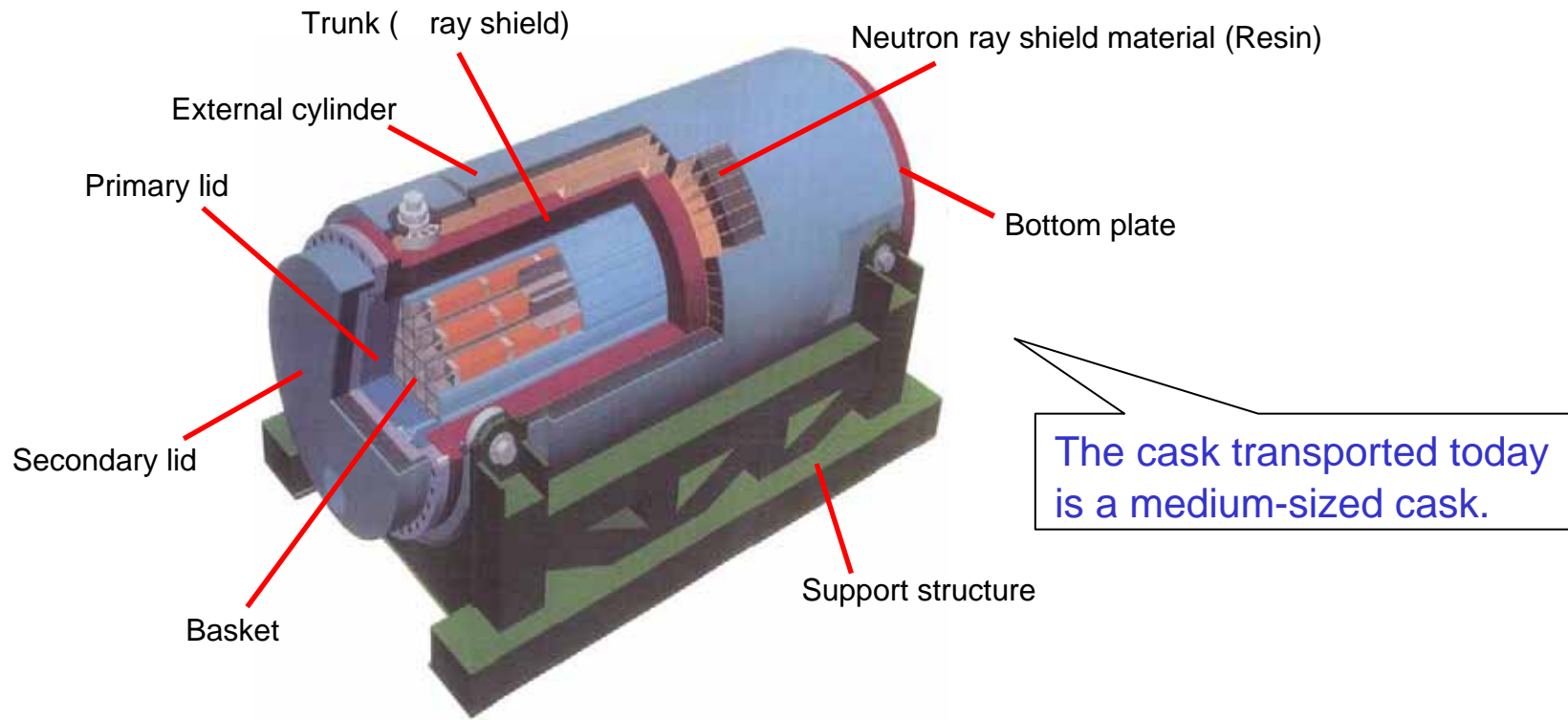


5. Roof installation
(Done today)



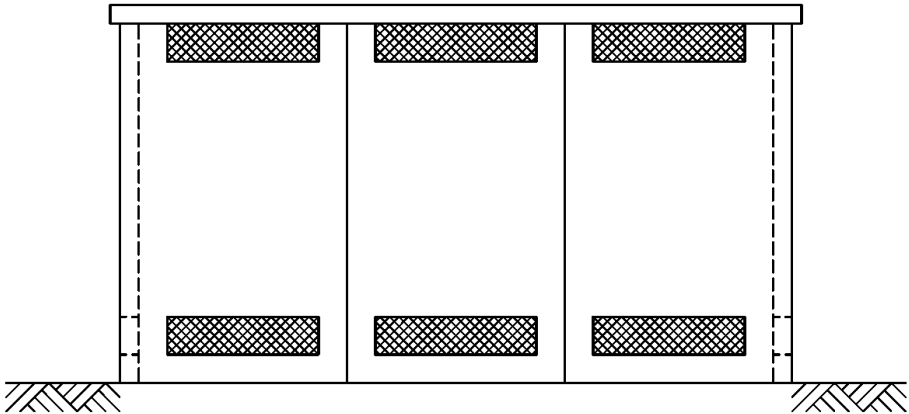
6. Installation of instruments
(to be done)

Dry Storage Cask Transported to the Temporary Cask Storage Facility Today

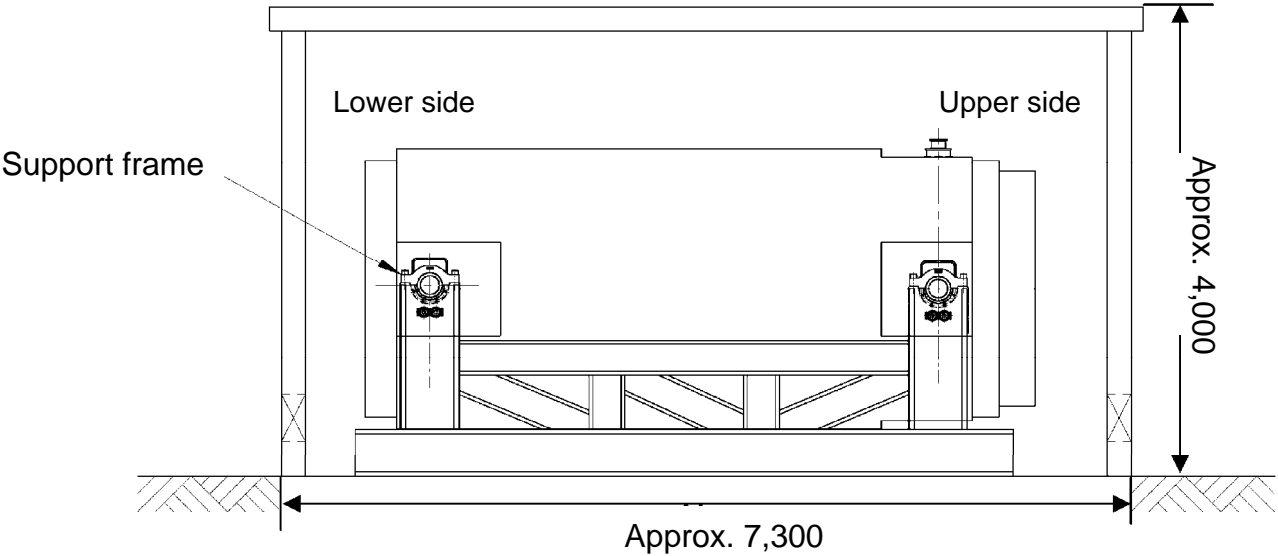


| | Medium size casks (4) | Large size casks (5) |
|--------------------------------|-----------------------|----------------------|
| Outer diameter | 2.2m | 2.4m |
| Total length | 5.6m | 5.6m |
| Total weight (including fuels) | 96 tons | 115 tons |
| Number of stored fuels | 37 | 52 |

Outer Shape of the Concrete Module



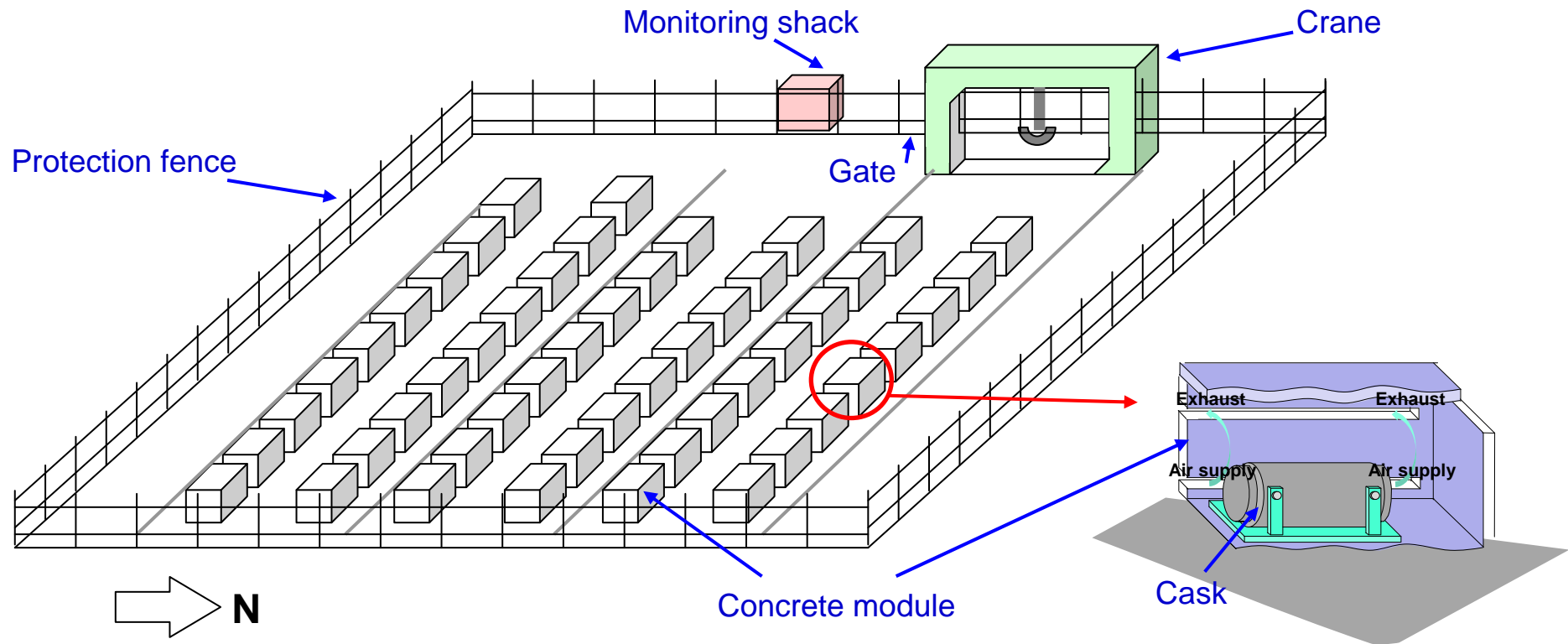
Outer shape of the concrete module



Cask installation (Dry storage cask)

Overview of the Temporary Dry Cask Storage Facility

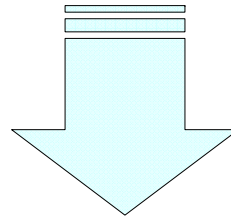
- Number of casks stored: 50 (Space secured for additional 15 casks)
- Each cask is covered by a concrete module which functions as a storage cover.
- Basic structure: The foundation has been built on an improved ground.
- The support frame is fixed by fixing bolts (similarly to the existing cask storage).
- An arch-shaped crane is installed to allow for handling casks, etc.



Start of Operation of the Temporary Dry Cask Storage Facility

A thermometer (surface temperature sensor) and a pressure sensor will be installed on the cask to perform calibration.

The operation of the facility will be started once the monitoring of the pressure between lids and surface temperature utilizing the thermometer and the pressure sensor is started.



An announcement will be made after the operation starts.