

# Sampling Results Regarding the Water Leak at the Tanks in the H4 area in Fukushima Daiichi Nuclear Power Station (South Water Outlet, Drainage Channel)

<Reference>  
YY/MM/DD  
Tokyo Electric Power Company

	Seawater of the south water outlet <small>Note 1</small> (near the drainage channel exit) (T-2)	Switched drainage channel C OP.35 exit (C-2-1)	Point near the main gate in the drainage channel C <small>Note 2</small> (C-0)	Point near Fureai Intersection in the drainage channel B <small>Note 2</small> (B-0-1)
Date of Sampling (MM/DD)				
Time of sampling				
Cs-134 (Approx. 2 years)				
Cs-137 (Approx.30 years)				
Gross β				

Unit: Bq/L

	Side ditch next to the tank (point immediately short of the junction with the drainage channel C) (X-1)
Date of Sampling (MM/DD)	
Time of sampling	
Cs-134(Approx. 2 years)	
Cs-137(Approx.30 years)	
Gross β	

Unit: Bq/L

Note 1: Approx. 330m south of Unit 1-4 water outlets (T-2)

Note 2: Water inflow location of drainage channel to the tank area

\* "ND"s indicate that the measurement results are below the detection limits, and the detection limit of each nuclide is provided in parentheses.

\*A hyphen, "-", indicates that the particle is out of range

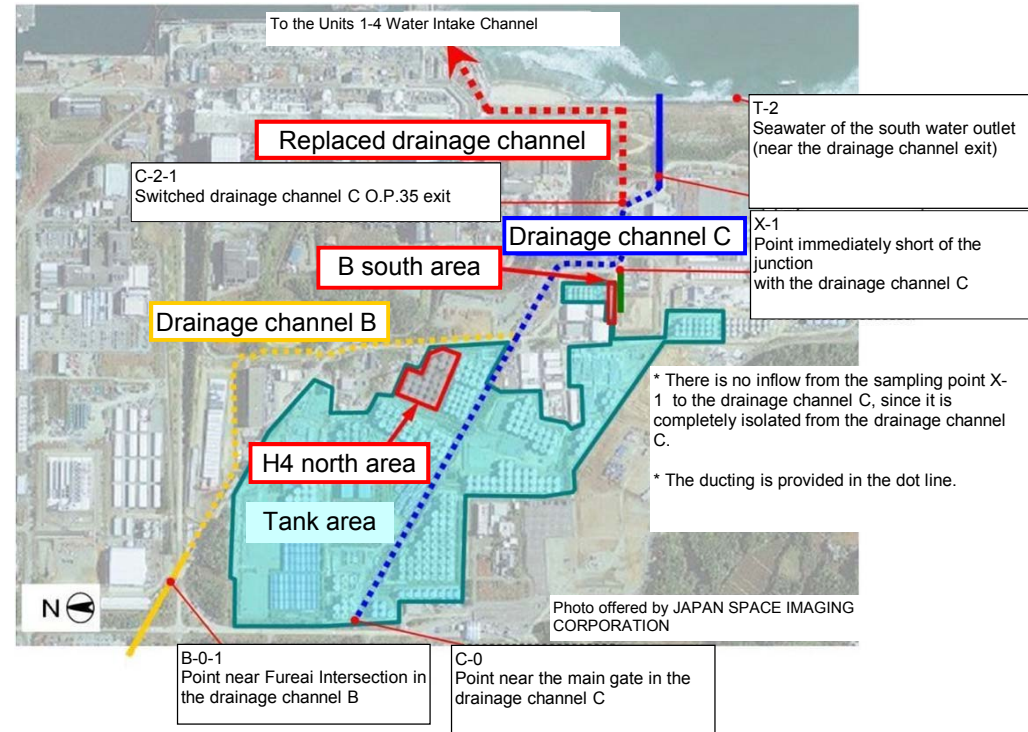
●Withthe completion of the influence assessment of the channel change of the drainage channel C, the drainage channel C OP.35 exit (C-2) was closed. Also, we will measure Gross β in the seawater of the south water outlet (near the drainage channel exit) (T-2) once a week, same as we do in the other offshore points, because the outlet of the drainage channel C has been moved to the harbor.

<Reference> The Highest Dose Until the Previous Measurement

Unit: Bq/L

	Seawater of the south water outlet <small>Note 1</small> (near the drainage channel exit) (T-2)	Switched drainage channel C OP.35 exit (C-2-1)	Point near the main gate in the drainage channel C <small>Note 2</small> (C-0)
Cs-134(Approx. 2 years) (MM/DD)			
Cs-137(Approx.30 years) (MM/DD)			
Gross β (MM/DD)			

	Point near Fureai Intersection in the drainage channel B <small>Note 2</small> (B-0-1)	Side ditch next to the tank (point immediately short of the junction with the drainage channel C) (X-1)
Cs-134(Approx. 2 years) (MM/DD)		
Cs-137(Approx.30 years) (MM/DD)		
Gross β (MM/DD)		



\* Sampling dates of 2013 are provided in square brackets, [ ] and those of 2014 in angle brackets, < >.