

Sampling Results Regarding the Water Leak at the Tanks in the H4 area in Fukushima Daiichi Nuclear Power Station (South Water Outlet, Drainage Channel)

<Reference>
June 6, 2014
Tokyo Electric Power Company

Unit: Bq/L

| | Seawater of the south water outlet <small>Note 1</small> (near the drainage channel exit) (T-2) | Drainage channel C OP.35 exit (C-2) | Point near the main gate in the drainage channel C <small>Note 2</small> (C-0) | Point near Fureai Intersection in the drainage channel B <small>Note 2</small> (B-0-1) |
|-------------------------|--|-------------------------------------|--|--|
| Date of Sampling | Jun 5, 2014 | Jun 5, 2014 | | Jun 5, 2014 |
| Time of sampling | 7:55 AM | 7:50 AM | | 7:40 AM |
| Cs-134(Approx. 2 years) | ND(0.99) | ND(17) | | ND(16) |
| Cs-137(Approx.30 years) | ND(1.4) | ND(26) | | ND(22) |
| Gross β | ND(21) | ND(14) | | ND(13) |

Unit: Bq/L

| | Side ditch next to the tank (point immediately short of the junction with the drainage channel C) (X-1) |
|-------------------------|---|
| Date of Sampling | Jun 5, 2014 |
| Time of sampling | 8:10 AM |
| Cs-134(Approx. 2 years) | ND(17) |
| Cs-137(Approx.30 years) | ND(26) |
| Gross β | 45 |

Note 1: Approx. 330m south from Unit 1-4 water outlet (T-2)

Note 2: Water inflow location of drainage channel to the tank area

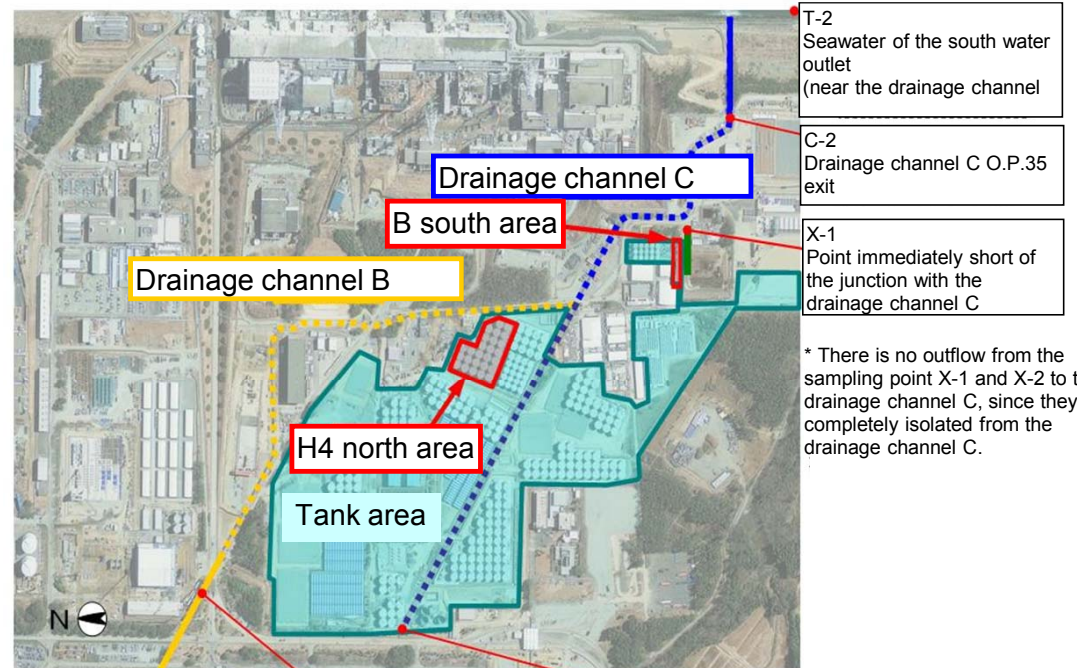
* "ND" indicates that the measurement result is below the detection limit, and the detection limit of each nuclide is provided in parentheses.

<Reference> The Highest Dose Until the Previous Measurement

Unit: Bq/L

| | Seawater of the south water outlet <small>Note 1</small> (near the drainage channel exit) (T-2) | Drainage channel C OP.35 exit (C-2) | Point near the main gate in the drainage channel C <small>Note 2</small> (C-0) |
|-------------------------|--|-------------------------------------|--|
| Cs-134(Approx. 2 years) | 3.5 [11/9] | 45 [9/26] | 20 <2/15> |
| Cs-137(Approx.30 years) | 8.1 [9/15,11/9] | 130 [9/26] | 51 <2/15> |
| Gross β | ND | 2,500 [10/24] | 120 <2/15> |

| | Point near Fureai Intersection in the drainage channel B <small>Note 2</small> (B-0-1) | Side ditch next to the tank (point immediately short of the junction with the drainage channel C) (X-1) |
|-------------------------|--|---|
| Cs-134(Approx. 2 years) | 110 <5/1> | 450 [10/4] |
| Cs-137(Approx.30 years) | 280 <5/1> | 990 [10/4] |
| Gross β | 380 [9/2] | 15,000 [10/2] |



* The ducting is provided in the dot line.

| | |
|---|---|
| B-0-1 Point near Fureai Intersection in the drainage channel B | C-0 Point near the main gate in the drainage channel C |
|---|---|

* There is no outflow from the sampling point X-1 and X-2 to the drainage channel C, since they are completely isolated from the drainage channel C.

* Sampling date is provided in parentheses. []: 2013, <>: 2014