

# Sampling Results Regarding the Water Leak at the Tanks in the H4 area in Fukushima Daiichi Nuclear Power Station (South Water Outlet, Drainage Channel)

<Reference>  
May 30, 2014  
Tokyo Electric Power Company

Unit: Bq/L

	Seawater of the south water outlet Note 1 (near the drainage channel exit) (T-2)	Drainage channel C OP.35 exit (C-2)	Point near the main gate in the drainage channel C Note 2 (C-0)	Point near Fureai Intersection in the drainage channel B Note 2 (B-0-1)
Date of Sampling	May 29, 2014	May 29, 2014		May 29, 2014
Time of sampling	8:00 AM	7:50 AM		7:32 AM
Cs-134(Approx. 2 years)	ND(0.99)	ND(17)		ND(15)
Cs-137(Approx.30 years)	ND(1.4)	ND(25)		ND(23)
Gross β	ND(21)	ND(13)		ND(13)

Unit: Bq/L

	Side ditch next to the tank (point immediately short of the junction with the drainage channel C) (X-1)
Date of Sampling	May 29, 2014
Time of sampling	7:41 AM
Cs-134(Approx. 2 years)	ND(16)
Cs-137(Approx.30 years)	23
Gross β	65

Note 1: Approx. 330m south from Unit 1-4 water outlet (T-2)

Note 2: Water inflow location of drainage channel to the tank area

\* "ND" indicates that the measurement result is below the detection limit, and the detection limit of each nuclide is provided in parentheses.

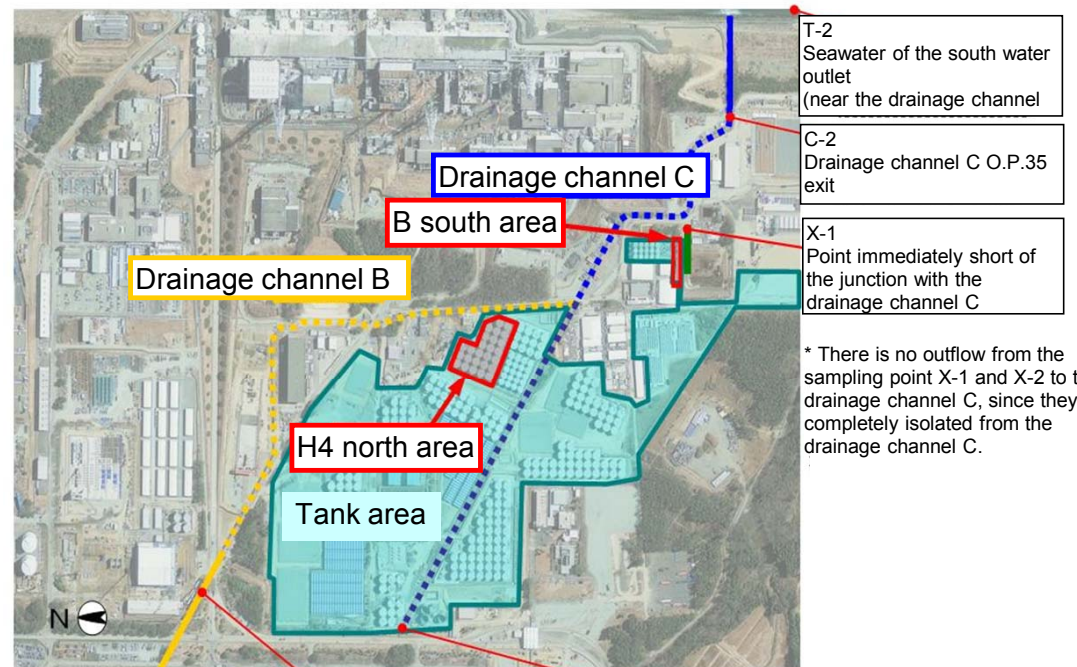
\* Sampling point "Side ditch next to the tank (X-2)" was abolished on May 26, 2014, since ducting construction was completed.

<Reference> The Highest Dose Until the Previous Measurement

Unit: Bq/L

	Seawater of the south water outlet Note 1 (near the drainage channel exit) (T-2)	Drainage channel C OP.35 exit (C-2)	Point near the main gate in the drainage channel C Note 2 (C-0)
Cs-134(Approx. 2 years)	3.5 [11/9]	45 [9/26]	20 <2/15>
Cs-137(Approx.30 years)	8.1 [9/15,11/9]	130 [9/26]	51 <2/15>
Gross β	ND	2,500 [10/24]	120 <2/15>

	Point near Fureai Intersection in the drainage channel B Note 2 (B-0-1)	Side ditch next to the tank (point immediately short of the junction with the drainage channel C) (X-1)
Cs-134(Approx. 2 years)	110 <5/1>	450 [10/4]
Cs-137(Approx.30 years)	280 <5/1>	990 [10/4]
Gross β	380 [9/2]	15,000 [10/2]



T-2  
Seawater of the south water outlet (near the drainage channel)

C-2  
Drainage channel C O.P.35 exit

X-1  
Point immediately short of the junction with the drainage channel C

\* There is no outflow from the sampling point X-1 and X-2 to the drainage channel C, since they are completely isolated from the drainage channel C.

\* The ducting is provided in the dot line.

B-0-1  
Point near Fureai Intersection in the drainage channel B

C-0  
Point near the main gate in the drainage channel C

\* Sampling date is provided in parentheses. [ ]: 2013, <>: 2014