

# Sampling Results Regarding the Water Leak at the Tanks in the H4 area in Fukushima Daiichi Nuclear Power Station (South Water Outlet, Drainage Channel)

<Reference>

April 2, 2014

Tokyo Electric Power Company

Unit: Bq/L

	Seawater of the south water outlet <sup>Note 1</sup> (near the drainage channel exit) (T-2)	Drainage channel C OP.35 exit (C-2)	Point near the main gate in the drainage channel C <sup>Note 2</sup> (C-0)	Point near Fureai Intersection in the drainage channel B <sup>Note 2</sup> (B-0-1)
Date of Sampling	Apr 1, 2014	Apr 1, 2014		Apr 1, 2014
Time of sampling	8:32 AM	8:22 AM		8:50 AM
Cs-134(Approx. 2 years)	ND(1.3)	ND(16)		ND(17)
Cs-137(Approx.30 years)	ND(1.4)	ND(24)		ND(26)
Gross β	ND(18)	18		15

Unit: Bq/L

	Side ditch next to the tank (point immediately short of the junction with the drainage channel C) (X-1)	Side ditch next to the tank (X-2)
Date of Sampling	Apr 1, 2014	Apr 1, 2014
Time of sampling	8:44 AM	8:46 AM
Cs-134(Approx. 2 years)	ND(18)	ND(18)
Cs-137(Approx.30 years)	35	ND(27)
Gross β	76	180

Note 1: Approx. 330m south from Unit 1-4 water outlet (T-2)

Note 2: Water inflow location of drainage channel to the tank area

\* "ND" indicates that the measurement result is below the detection limit, and the detection limit of each nuclide is provided in parentheses.

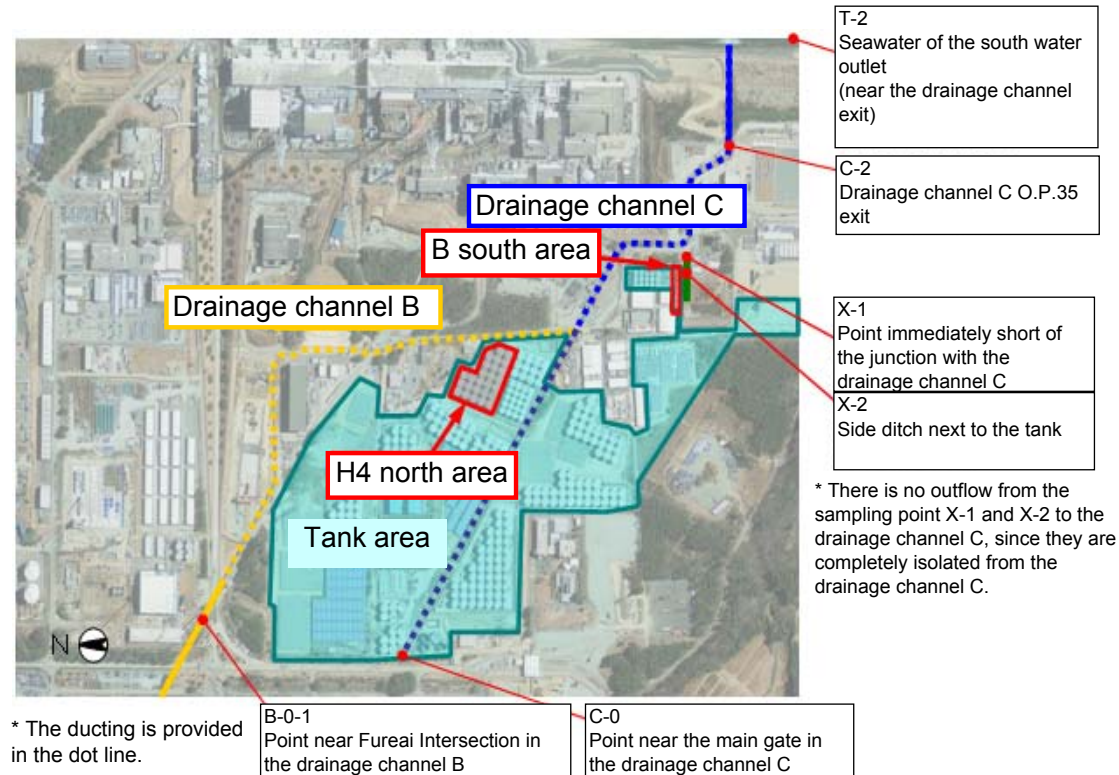
<Reference> The Highest Dose Until the Previous Measurement

Unit: Bq/L

	Seawater of the south water outlet <sup>Note 1</sup> (near the drainage channel exit) (T-2)	Drainage channel C OP.35 exit (C-2)	Point near the main gate in the drainage channel C <sup>Note 2</sup> (C-0)
Cs-134(Approx. 2 years)	3.5 [11/9]	45 [9/26]	20 <2/15>
Cs-137(Approx.30 years)	8.1 [9/15,11/9]	130 [9/26]	51 <2/15>
Gross β	ND	2,500 [10/24]	120 <2/15>

Unit: Bq/L

	Point near Fureai Intersection in the drainage channel B <sup>Note 2</sup> (B-0-1)	Side ditch next to the tank (point immediately short of the junction with the drainage channel C) (X-1)	Side ditch next to the tank (X-2)
Cs-134(Approx. 2 years)	70 [9/4]	450 [10/4]	260 [11/10]
Cs-137(Approx.30 years)	190 [9/4]	990 [10/4]	530 [11/10]
Gross β	380 [9/2]	15,000 [10/2]	15,000 [10/14]



\* Sampling date is provided in parentheses. [ ]: 2013, <>: 2014

\* The ducting is provided in the dot line.

\* There is no outflow from the sampling point X-1 and X-2 to the drainage channel C, since they are completely isolated from the drainage channel C.