

## Result of nuclide analysis of sub drain of Fukushima Daiichi NPS

Reference
-----------

(Data summarized on March 1)

Place of Sampling	Fukushima Daiichi NPS 1U sub-drain	Fukushima Daiichi NPS 2U sub-drain	Fukushima Daiichi NPS 3U sub-drain	Fukushima Daiichi NPS 4U sub-drain	Fukushima Daiichi NPS 5U sub-drain	Fukushima Daiichi NPS 6U sub-drain	Fukushima Daiichi NPS Deep well
Time of Sampling	Feb 29, 2012 09:53 am	Feb 29, 2012 02:30 pm	Feb 29, 2012 10:15 am	Feb 29, 2012 09:20 am	Feb 29, 2012 10:21 am	Feb 29, 2012 10:00 am	Feb 29, 2012 09:35 am
Detected Nuclides (Half-life)	Density of sample ( Bq/cm3)						
I-131 (about 8 days)	ND	ND	ND	ND	ND	ND	ND
Cs-134 (about 2 years)	2.5E-01	4.6E-01	ND	ND	ND	ND	ND
Cs-137 (about 30 years)	4.1E-01	7.2E-01	ND	ND	ND	ND	ND

\* O.OE - O means  $O.O \times 10^{-O}$

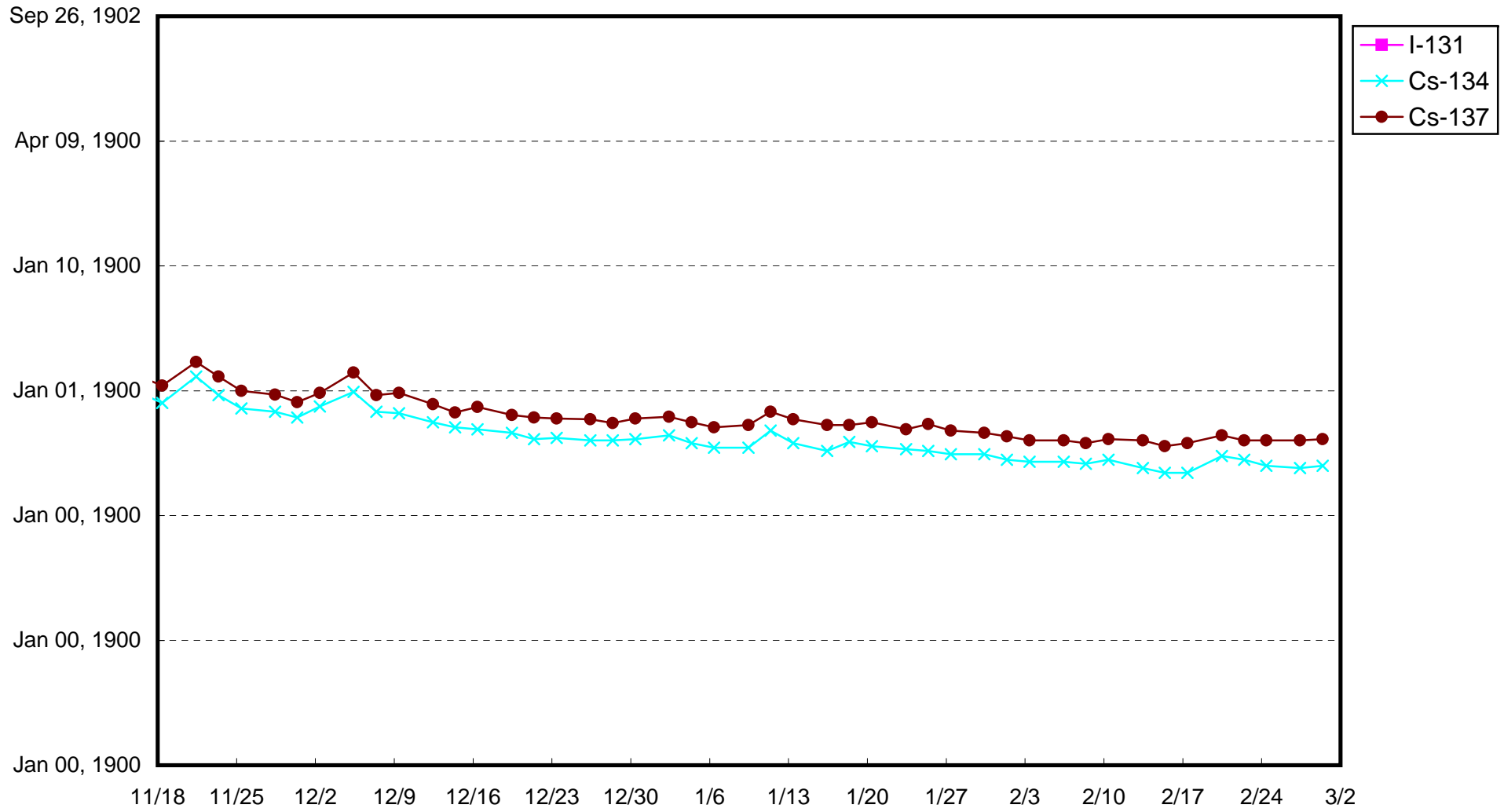
\* Data of other nuclides are under evaluation.

\* "ND" means the sampled data is below measurable limit.

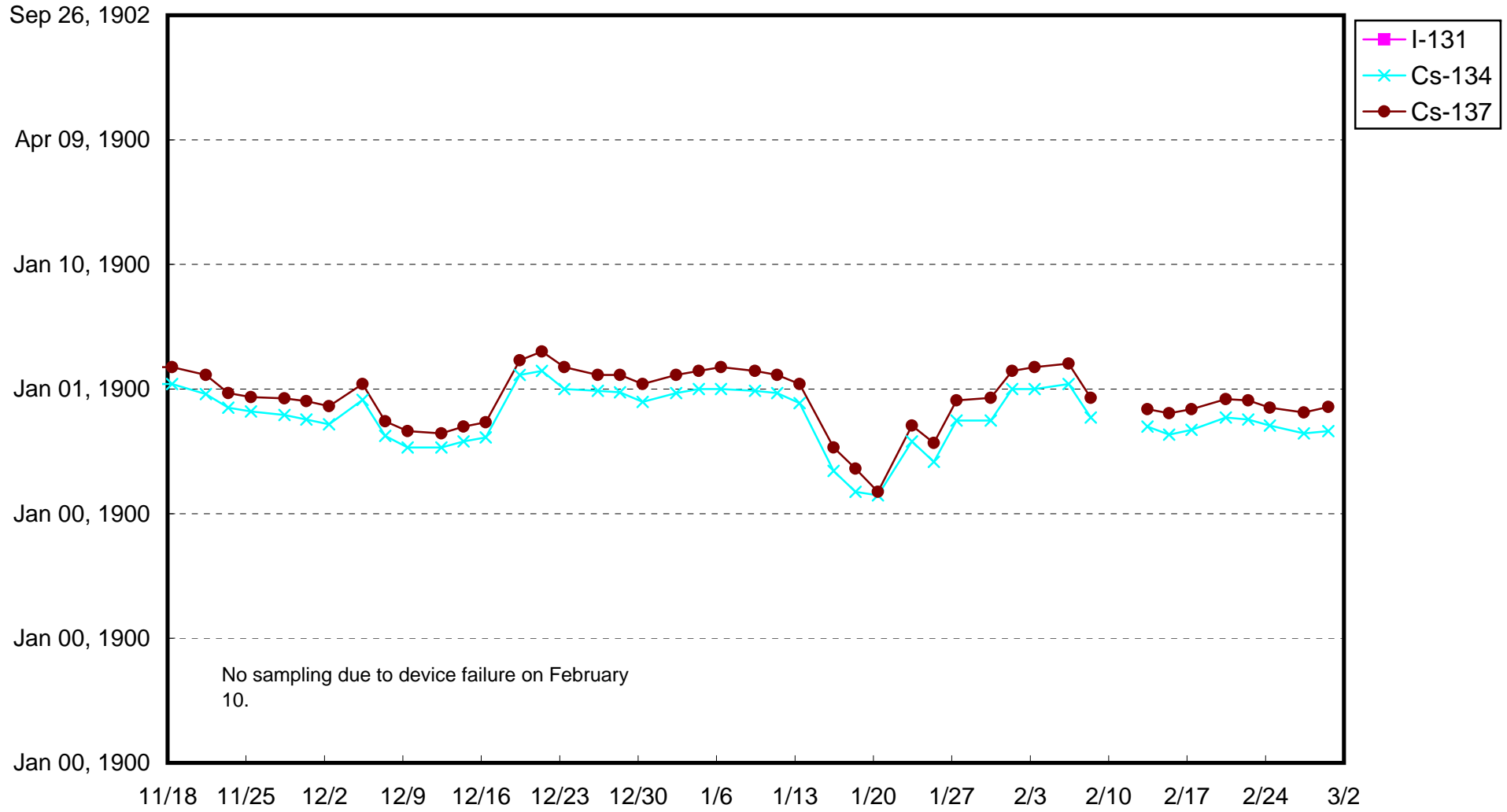
I-131: approx.  $2E-2Bq/cm^3$ , Cs-134: approx.  $2E-2Bq/cm^3$ , Cs-137: approx.  $3E-2Bq/cm^3$  )

Please note that these nuclides are sometimes detected even when they are below the limits, contingent on the detector or samples.

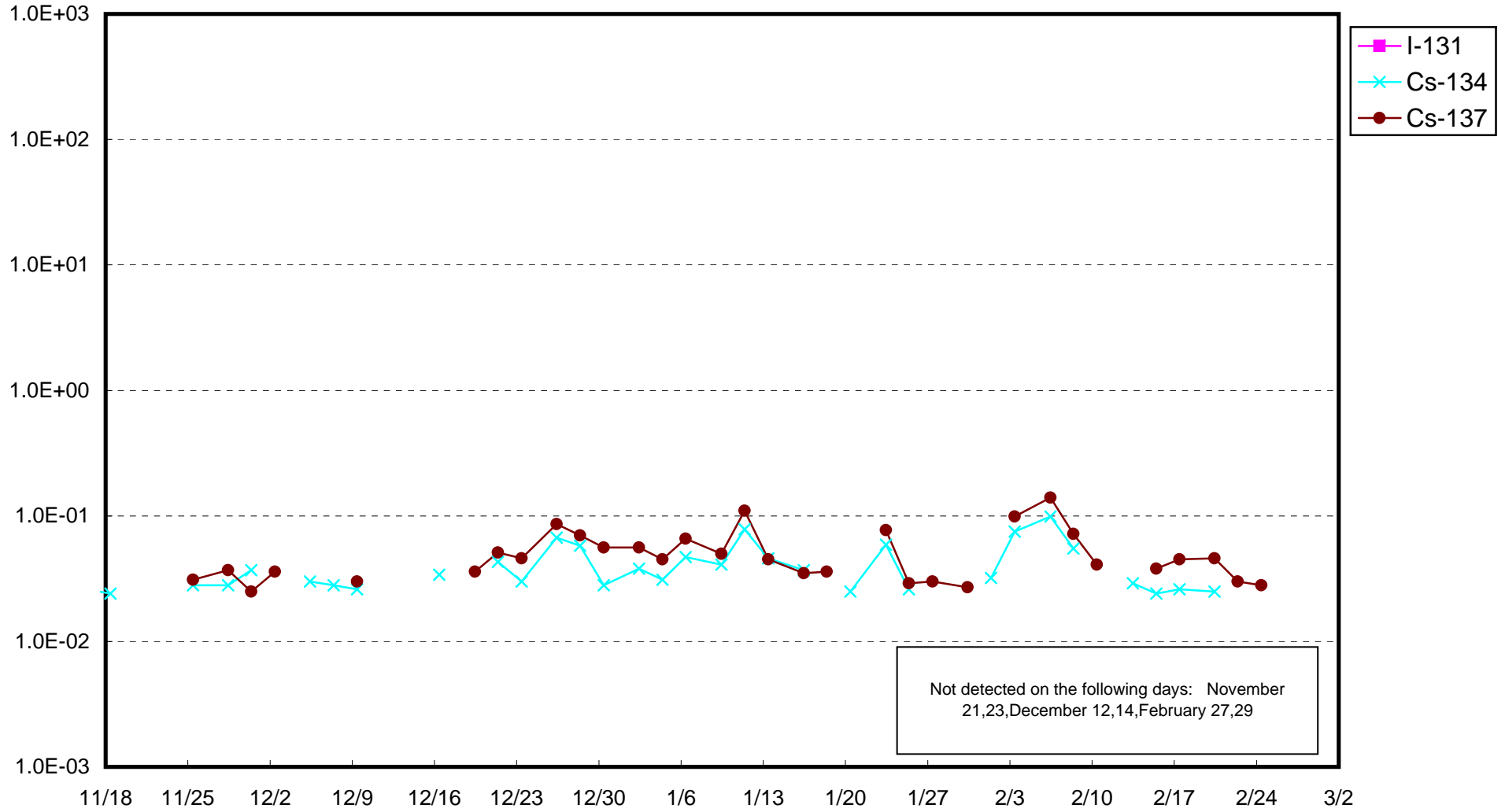
Fukushima Daiichi Nuclear Power Station : Radioactivity Density of Sub-drain at Unit 1 (Bq/cm<sup>3</sup>)



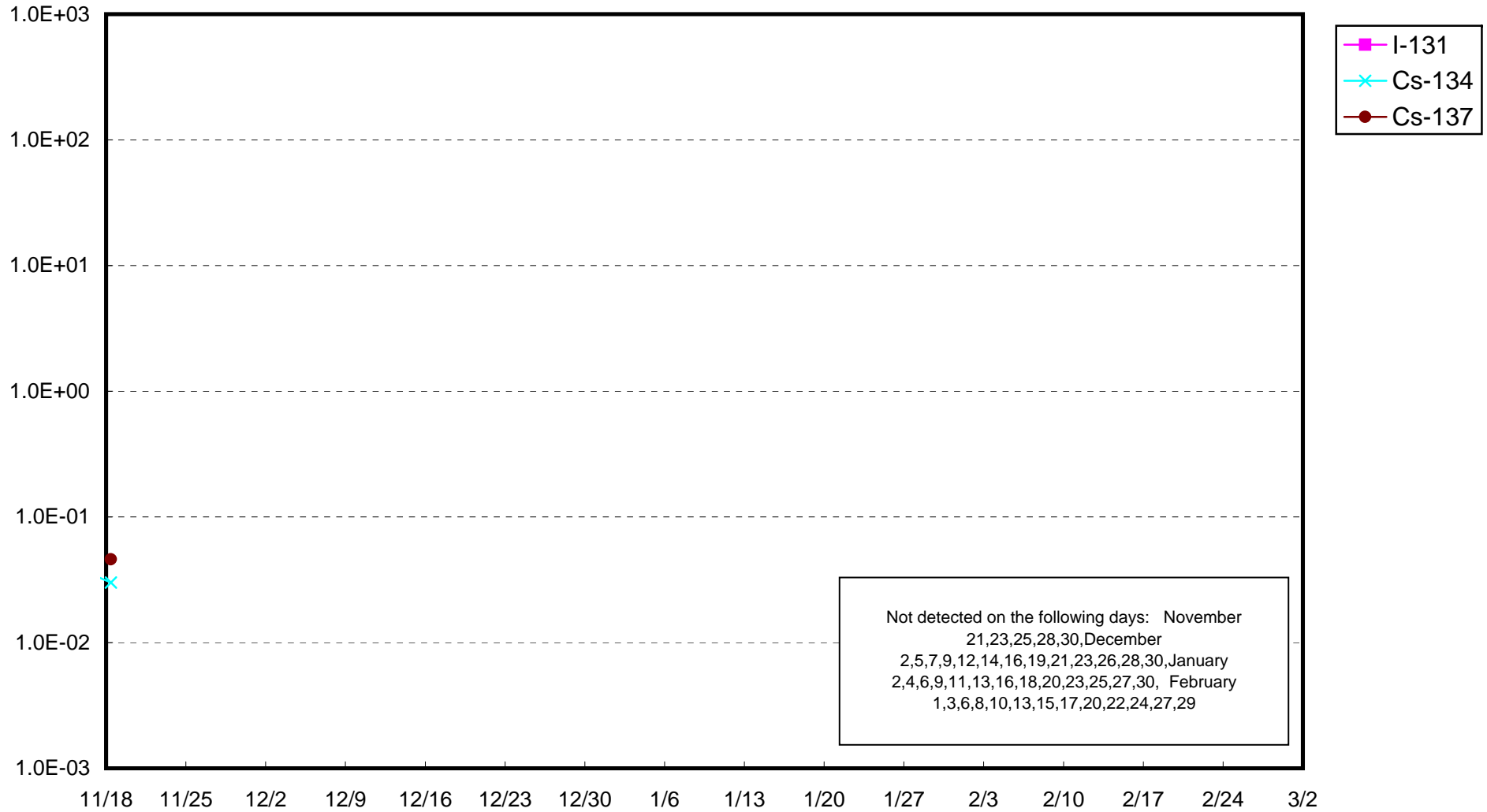
Fukushima Daiichi Nuclear Power Station : Radioactivity Density of Sub-drain at Unit 2 (Bq/cm<sup>3</sup>)



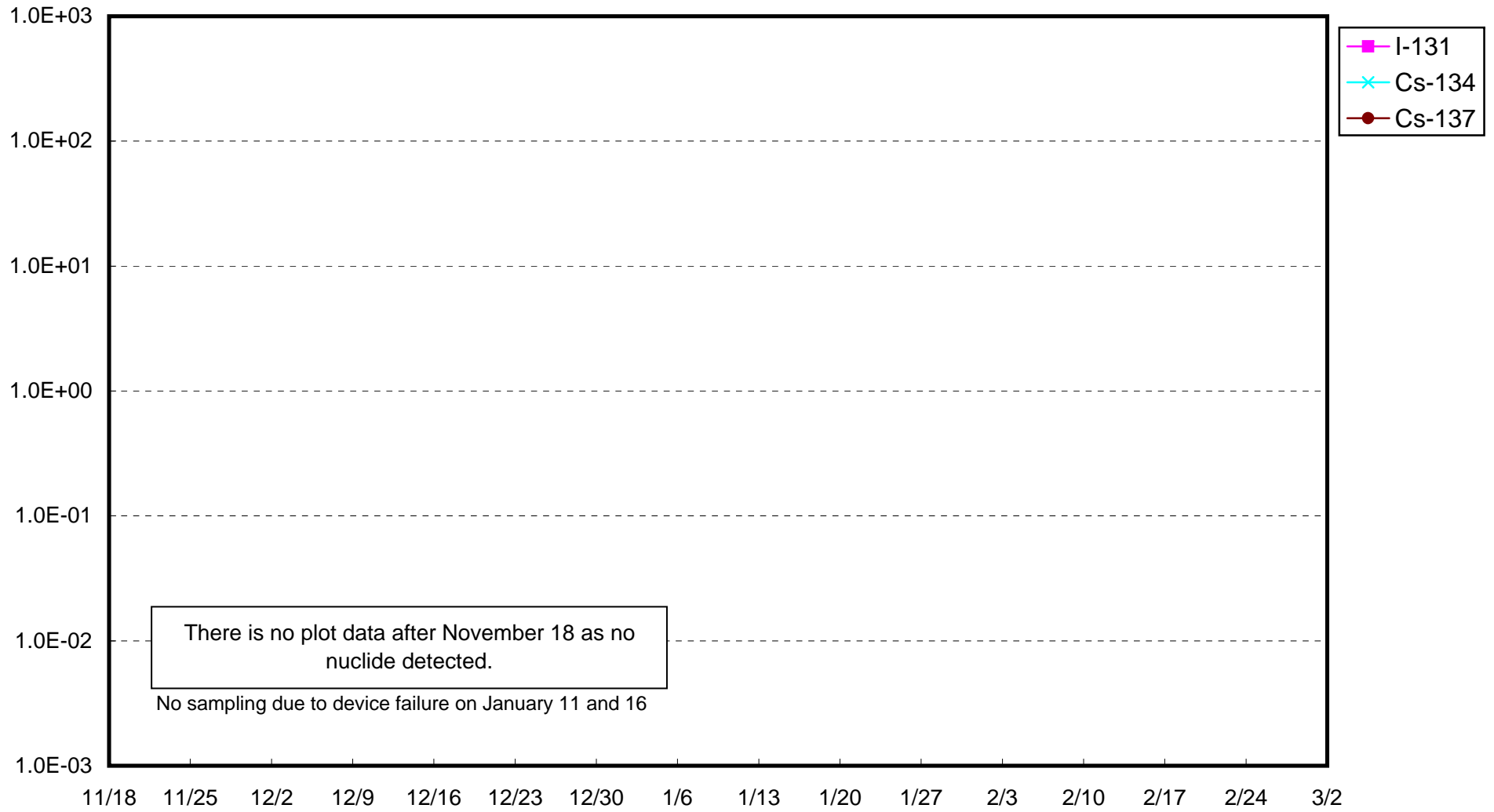
Fukushima Daiichi Nuclear Power Station : Radioactivity Density of Sub-drain at Unit 3 (Bq/cm<sup>3</sup>)



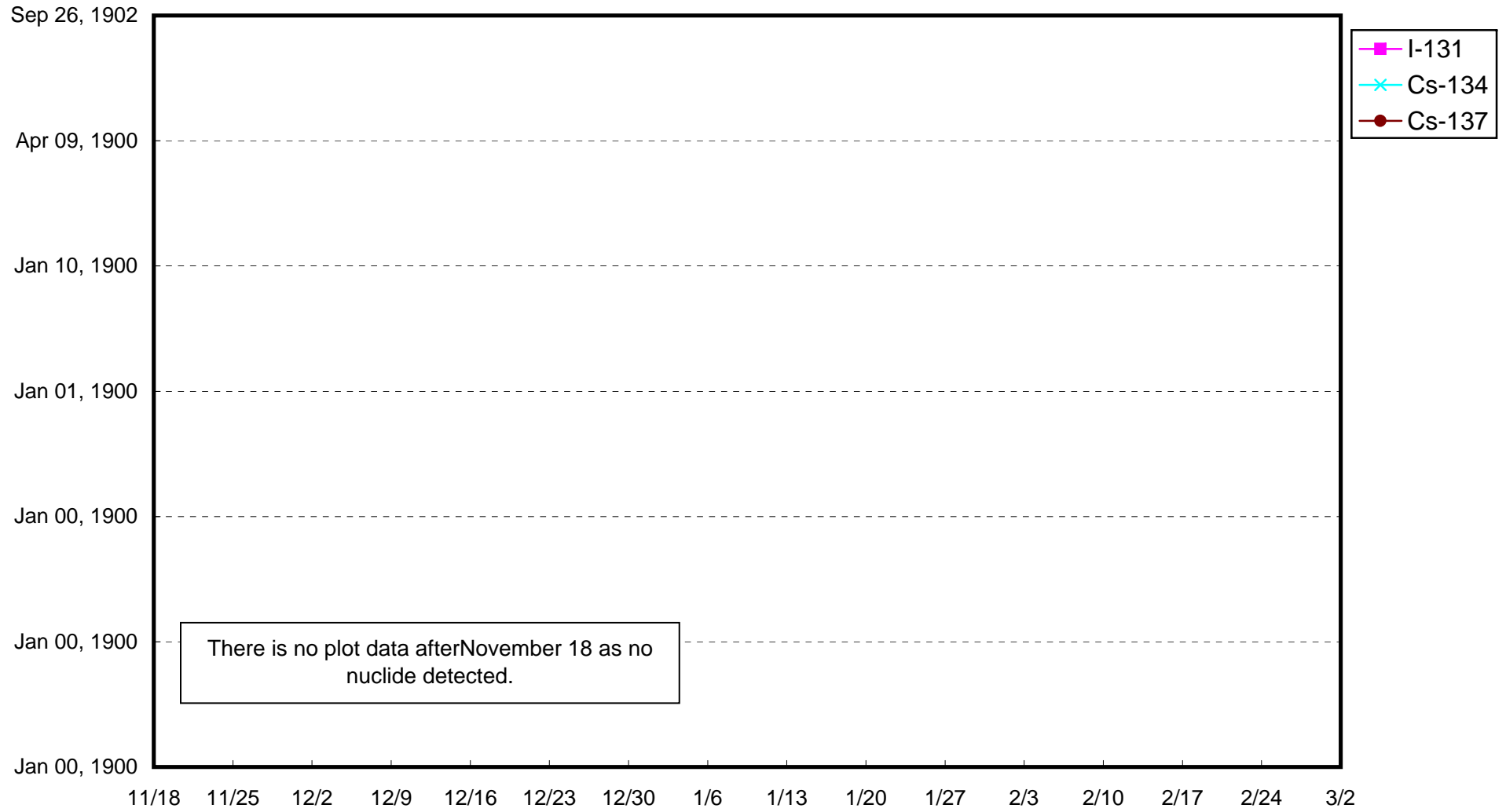
Fukushima Daiichi Nuclear Power Station : Radioactivity Density of Sub-drain at Unit 4 (Bq/cm<sup>3</sup>)



Fukushima Daiichi Nuclear Power Station : Radioactivity Density of Sub-drain at Unit 5 (Bq/cm<sup>3</sup>)



Fukushima Daiichi Nuclear Power Station : Radioactivity Density of Sub-drain at Unit 6 (Bq/cm<sup>3</sup>)



Fukushima Daiichi Nuclear Power Station : Radioactivity Density at the Deep Well at the Site (Bq/cm<sup>3</sup>)

