

Result of nuclide analysis of sub drain of Fukushima Daiichi NPS

Reference

(Data summarized on February 7)

Place of Sampling	Fukushima Daiichi NPS 1U sub-drain	Fukushima Daiichi NPS 2U sub-drain	Fukushima Daiichi NPS 3U sub-drain	Fukushima Daiichi NPS 4U sub-drain	Fukushima Daiichi NPS 5U sub-drain	Fukushima Daiichi NPS 6U sub-drain	Fukushima Daiichi NPS Deep well
Time of Sampling	6-Feb-12 10:10 AM	6-Feb-12 10:25 AM	6-Feb-12 11:10 AM	6-Feb-12 9:44 AM	6-Feb-12 10:40 AM	6-Feb-12 9:45 AM	6-Feb-12 8:45 AM
Detected Nuclides (Half-life)	Density of sample (Bq/cm3)						
I-131 (about 8 days)	ND	ND	ND	ND	ND	ND	ND
Cs-134 (about 2 years)	2.7E-01	1.1E+00	9.9E-02	ND	ND	ND	ND
Cs-137 (about 30 years)	4.0E-01	1.6E+00	1.4E-01	ND	ND	ND	ND

* O.OE - O means O.O x 10-O

* Data of other nuclides are under evaluation.

* "ND" means the sampled data is below measurable limit.

I-131: approx. 3E-2Bq/cm3, Cs-134: approx. 2E-2Bq/cm3, Cs-137: approx. 3E-2Bq/cm3)

Please note that these nuclides are sometimes detected even when they are below the limits, contingent on the detector or samples.

Pu analysis result at sub-drains of Fukushima Daiichi Nuclear Power Plant

1. Sampling points : Fukushima Daiichi Nuclear Power Plant Unit 2 sub-drains
Unit 4 sub-drains
Unit 5 sub-drains
2. Analysis Institute: Japan Chemical Analysis Center
3. Results :

(mBq/L)

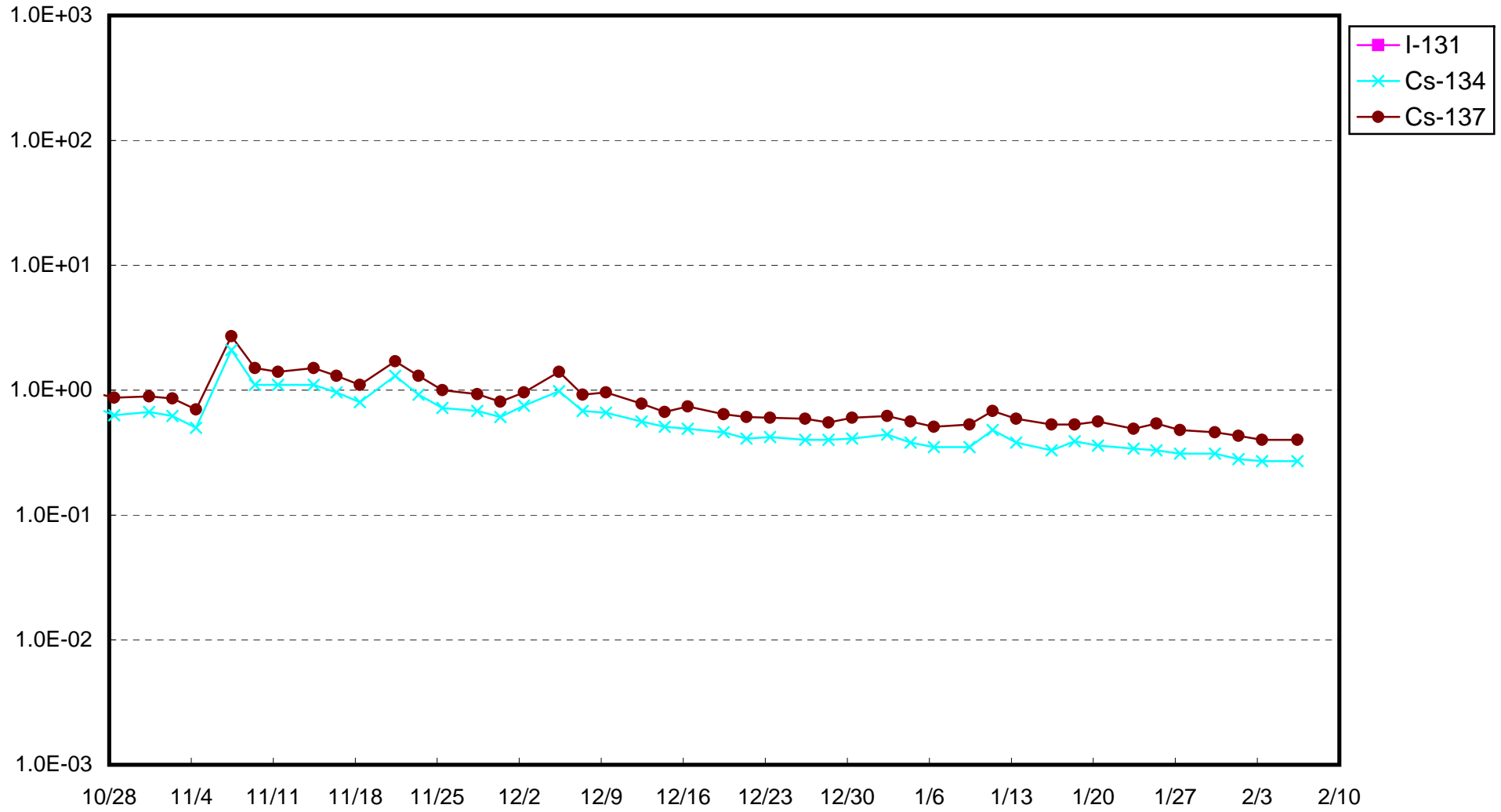
Point	Date	Pu-238	Pu-239,Pu-240
Unit 2 sub-drains	1/16	N.D. [$<5.1 \times 10^{-7}$]	N.D. [$<4.8 \times 10^{-7}$]
Unit 4 sub-drains		N.D. [$<6.5 \times 10^{-7}$]	N.D. [$<6.8 \times 10^{-7}$]
Unit 5 sub-drains	1/23	N.D. [$<5.0 \times 10^{-7}$]	N.D. [$<4.5 \times 10^{-7}$]

[]:measurable limit

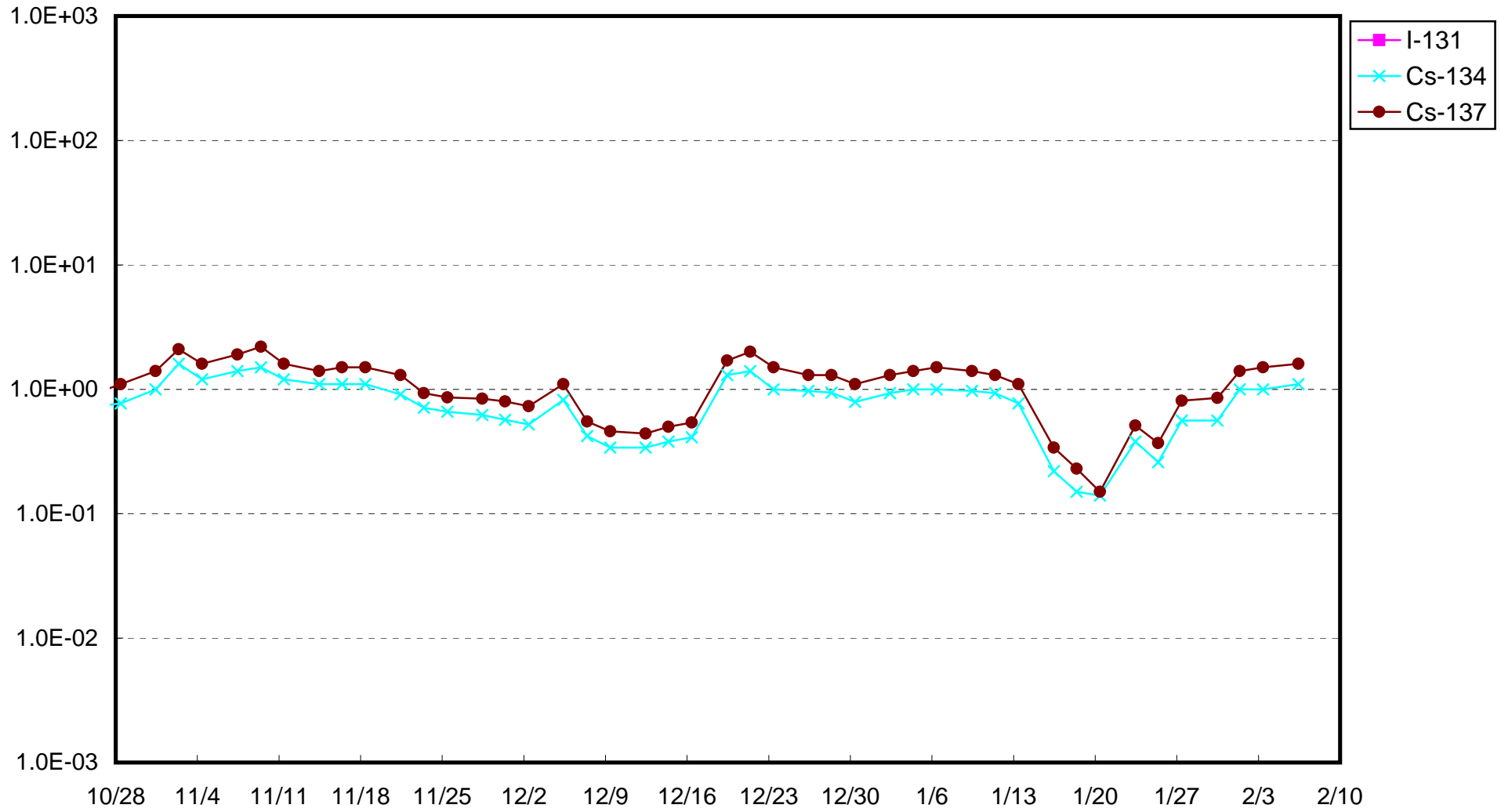
4. Evaluation:
No Pu-238,Pu-239,Pu-240 were detected

END

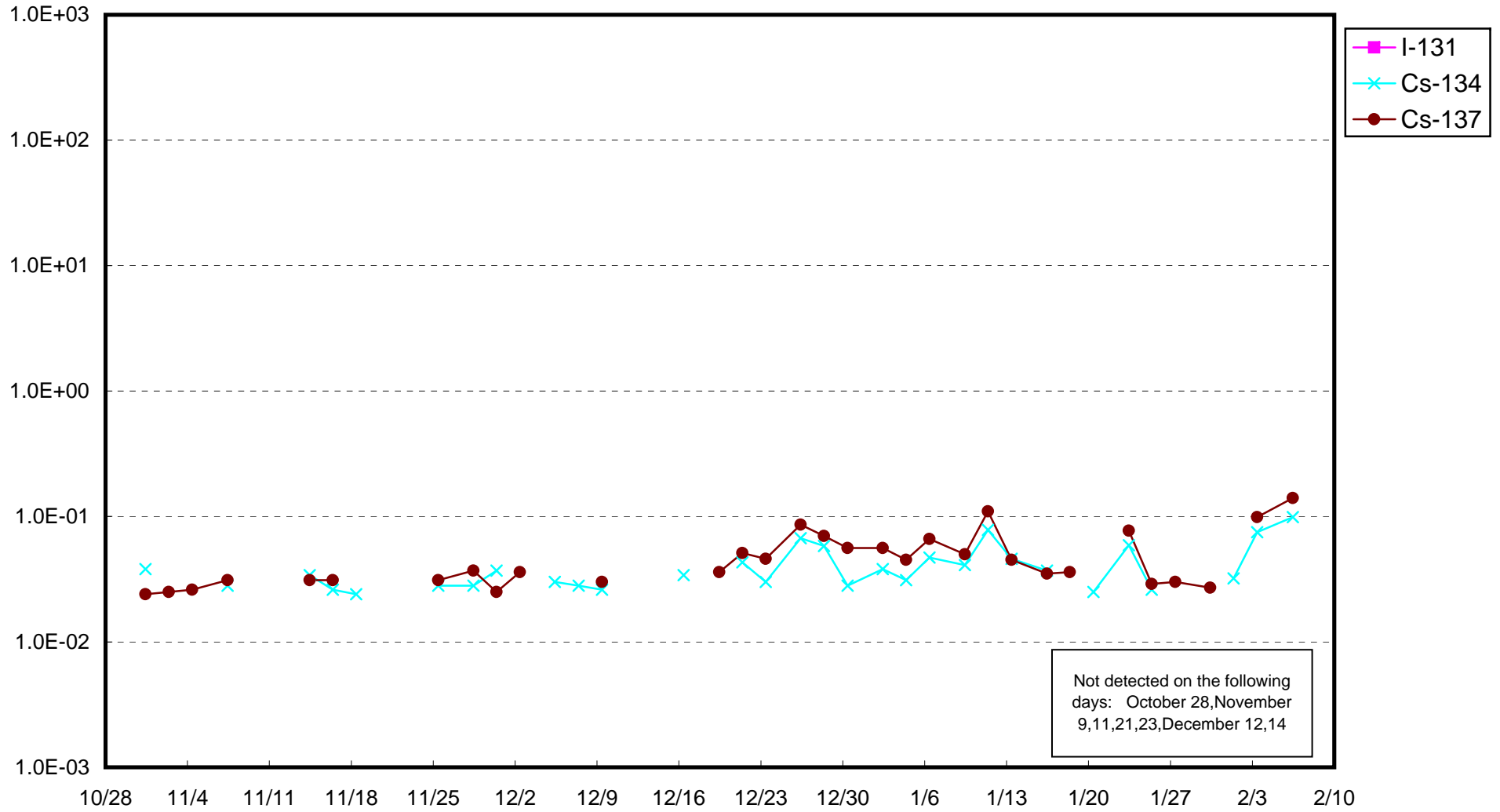
Fukushima Daiichi Nuclear Power Station : Radioactivity Density of Sub-drain at Unit 1 (Bq/cm³)



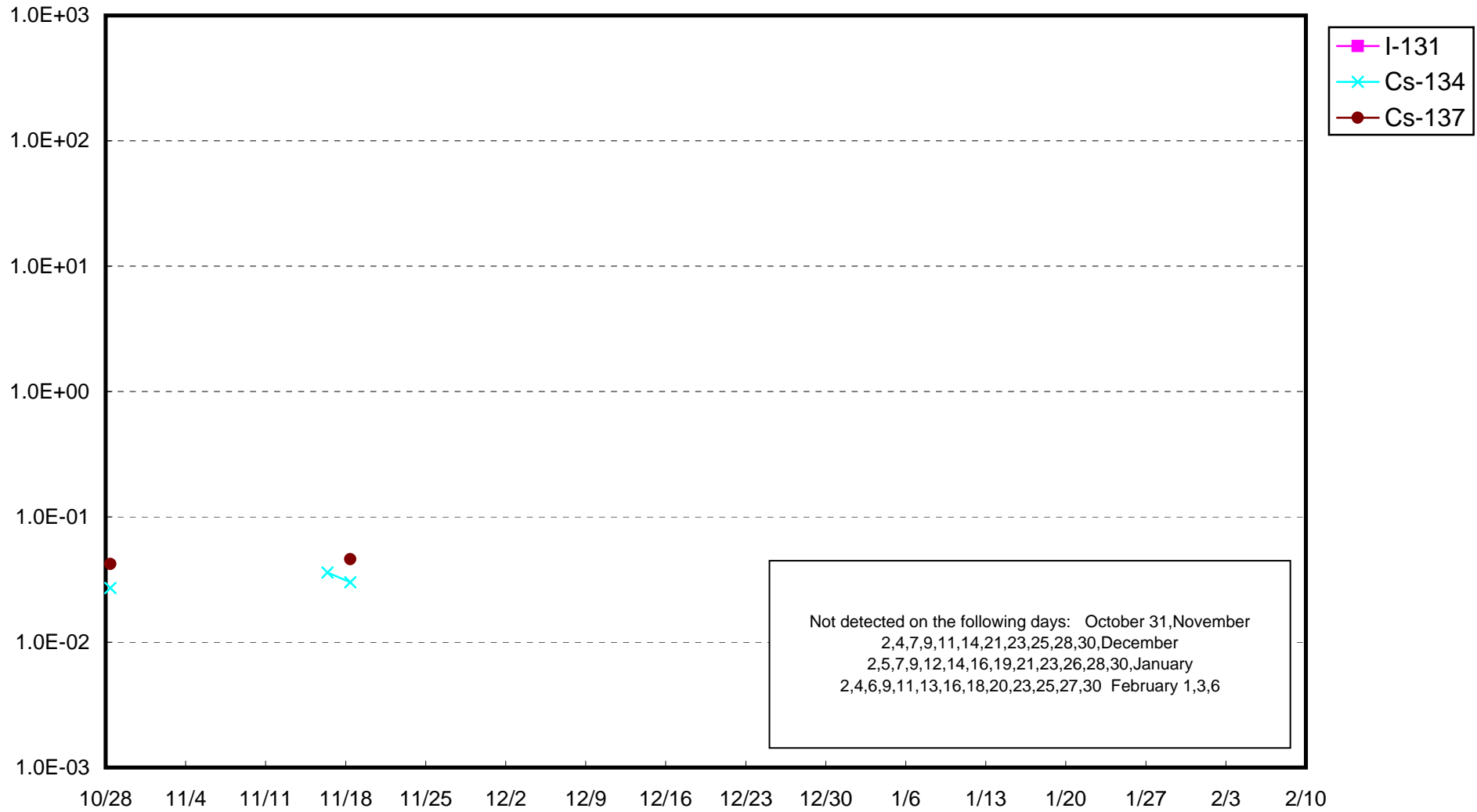
Fukushima Daiichi Nuclear Power Station : Radioactivity Density of Sub-drain at Unit 2 (Bq/cm³)



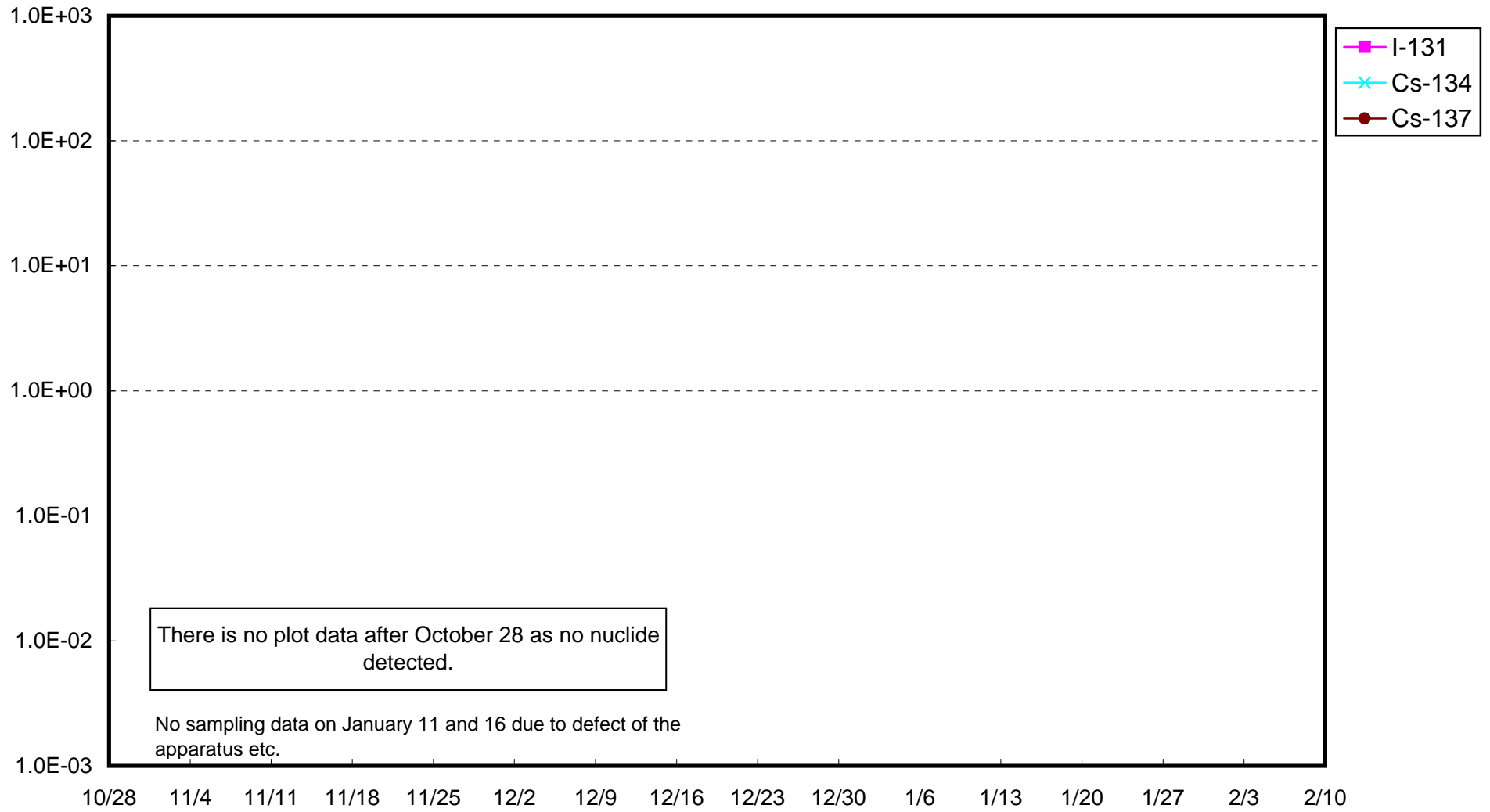
Fukushima Daiichi Nuclear Power Station : Radioactivity Density of Sub-drain at Unit 3 (Bq/cm³)



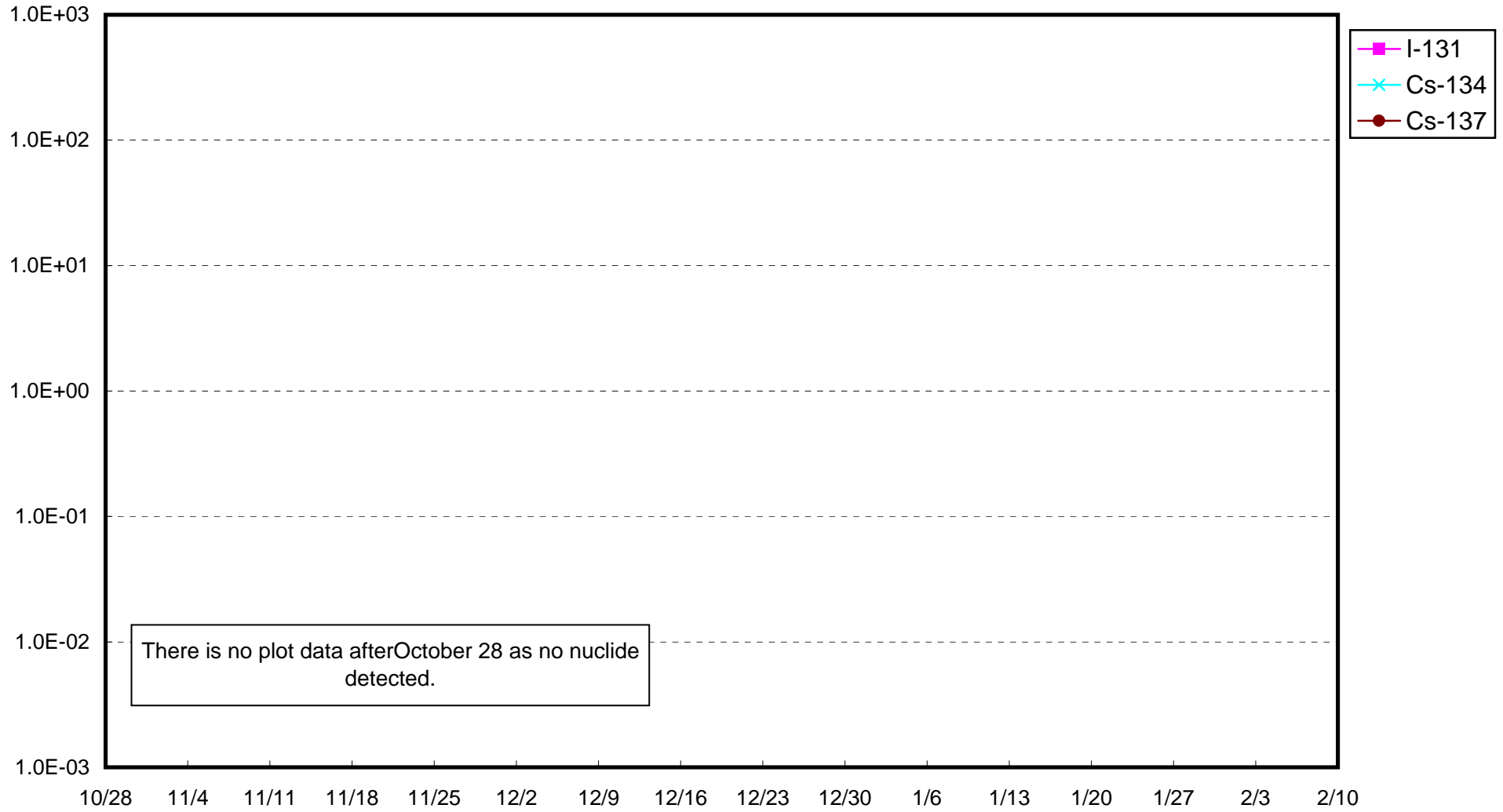
Fukushima Daiichi Nuclear Power Station : Radioactivity Density of Sub-drain at Unit 4 (Bq/cm³)



Fukushima Daiichi Nuclear Power Station : Radioactivity Density of Sub-drain at Unit 5 (Bq/cm³)



Fukushima Daiichi Nuclear Power Station : Radioactivity Density of Sub-drain at Unit 6 (Bq/cm³)



Fukushima Daiichi Nuclear Power Station : Radioactivity Density at the Deep Well at the Site (Bq/cm³)

