

Result of nuclide analysis of sub drain of Fukushima Daiichi NPS

Reference

(Data summarized on January 17)

Place of Sampling	Fukushima Daiichi NPS 1U sub-drain	Fukushima Daiichi NPS 2U sub-drain	Fukushima Daiichi NPS 3U sub-drain	Fukushima Daiichi NPS 4U sub-drain	Fukushima Daiichi NPS 5U sub-drain	Fukushima Daiichi NPS 6U sub-drain	Fukushima Daiichi NPS Deep well
Time of Sampling	16-Jan-12 10:30 AM	16-Jan-12 10:35 AM	16-Jan-12 10:40 AM	16-Jan-12 9:51 AM	16-Jan-12 (Not sampled)	16-Jan-12 10:10 AM	16-Jan-12 9:55 AM
Detected Nuclides (Half-life)	Density of sample ( Bq/cm3)						
I-131 (about 8 days)	ND	ND	ND	ND	-	ND	ND
Cs-134 (about 2 years)	3.3E-01	2.2E-01	3.7E-02	ND	-	ND	ND
Cs-137 (about 30 years)	5.3E-01	3.4E-01	3.5E-02	ND	-	ND	ND

\* O.OE - O means O.O x 10-O

\* Data of other nuclides are under evaluation.

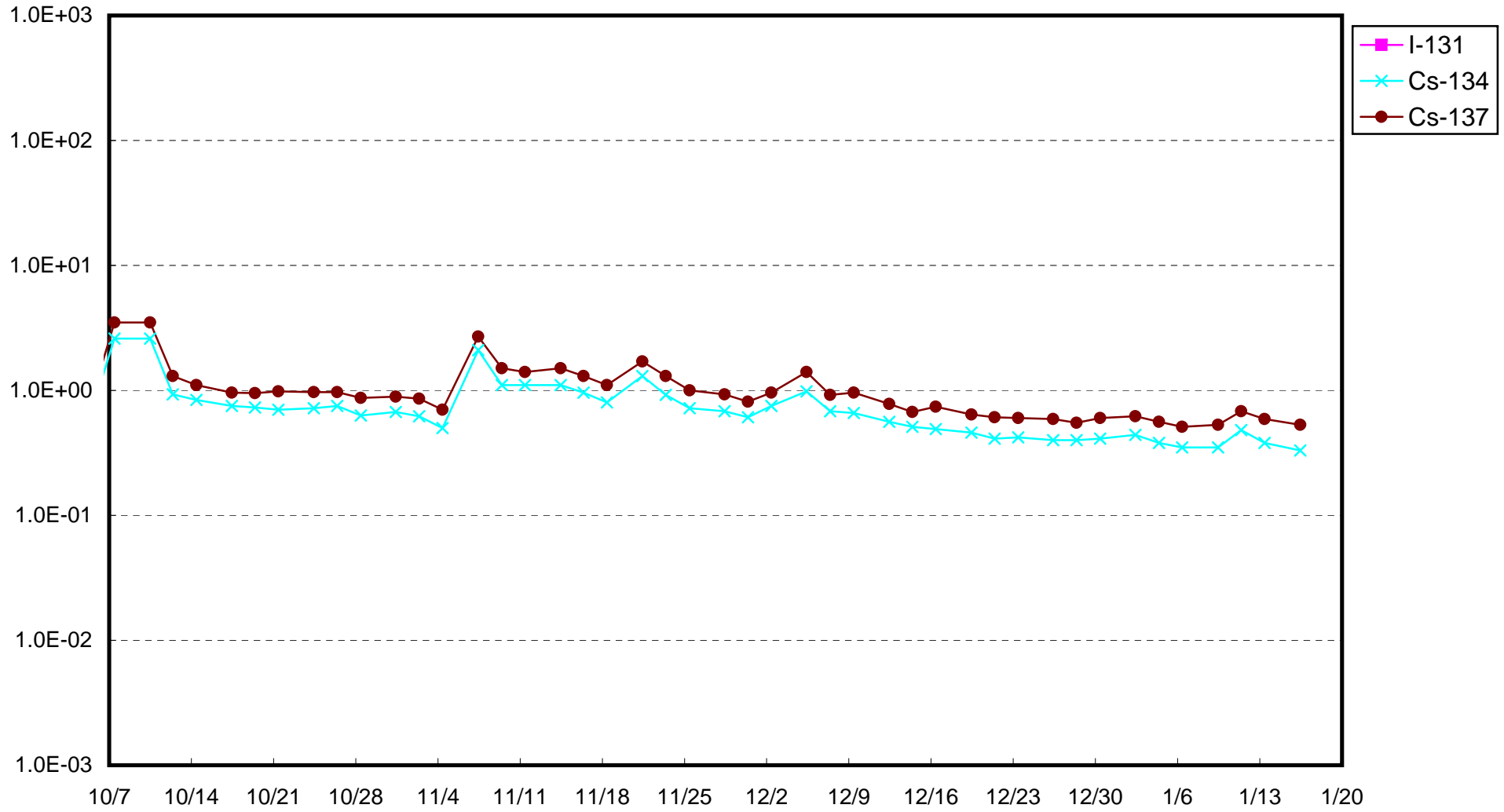
\* "ND" means the sampled data is below measurable limit.

I-131: approx. 2E-2Bq/cm3, Cs-134: approx. 2E-2Bq/cm3, Cs-137: approx. 3E-2Bq/cm3 )

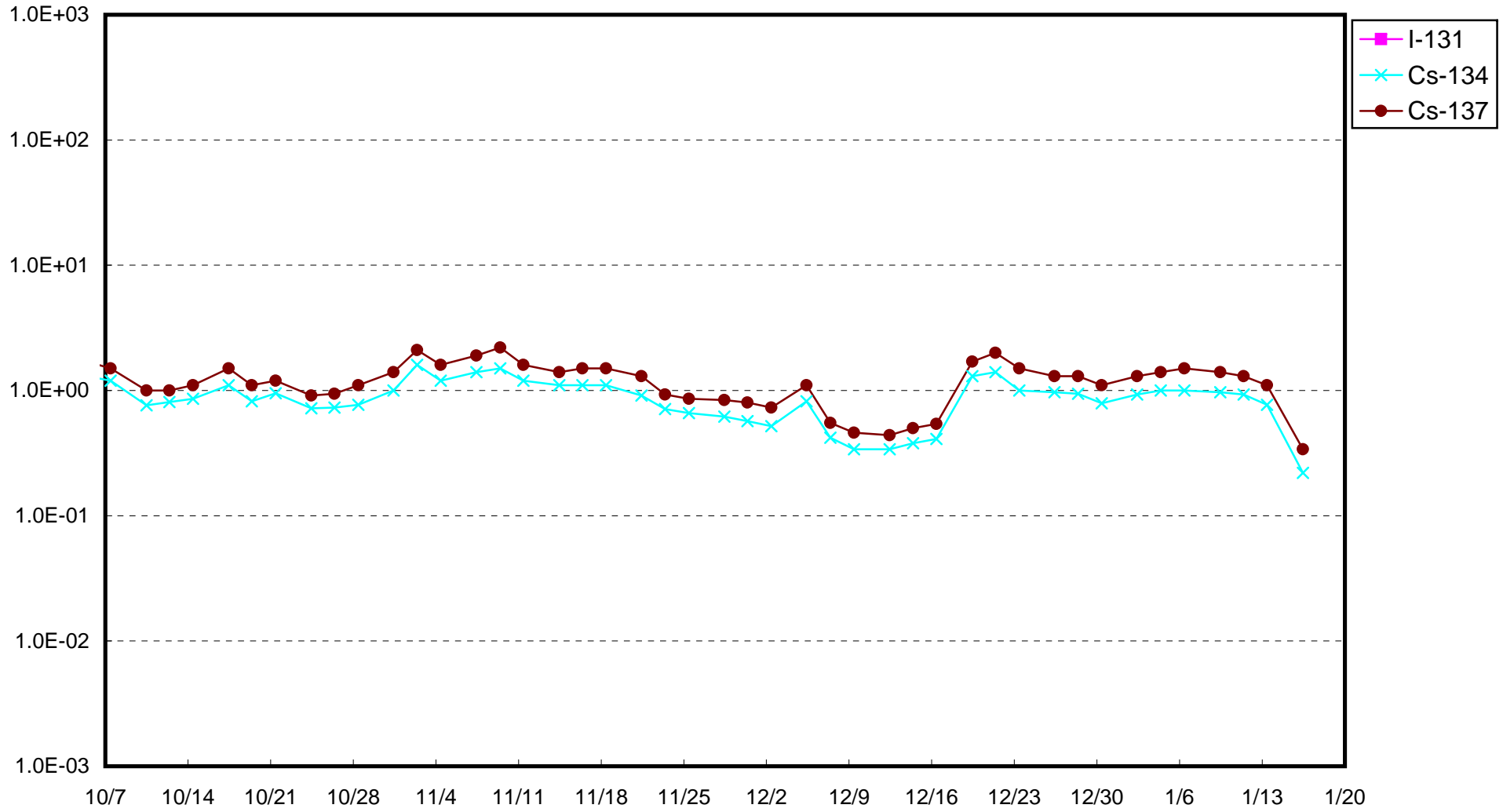
Please note that these nuclides are sometimes detected even when they are below the limits, contingent on the detector or samples.

Partly not sampled as the pump could not be used due to drawdown.

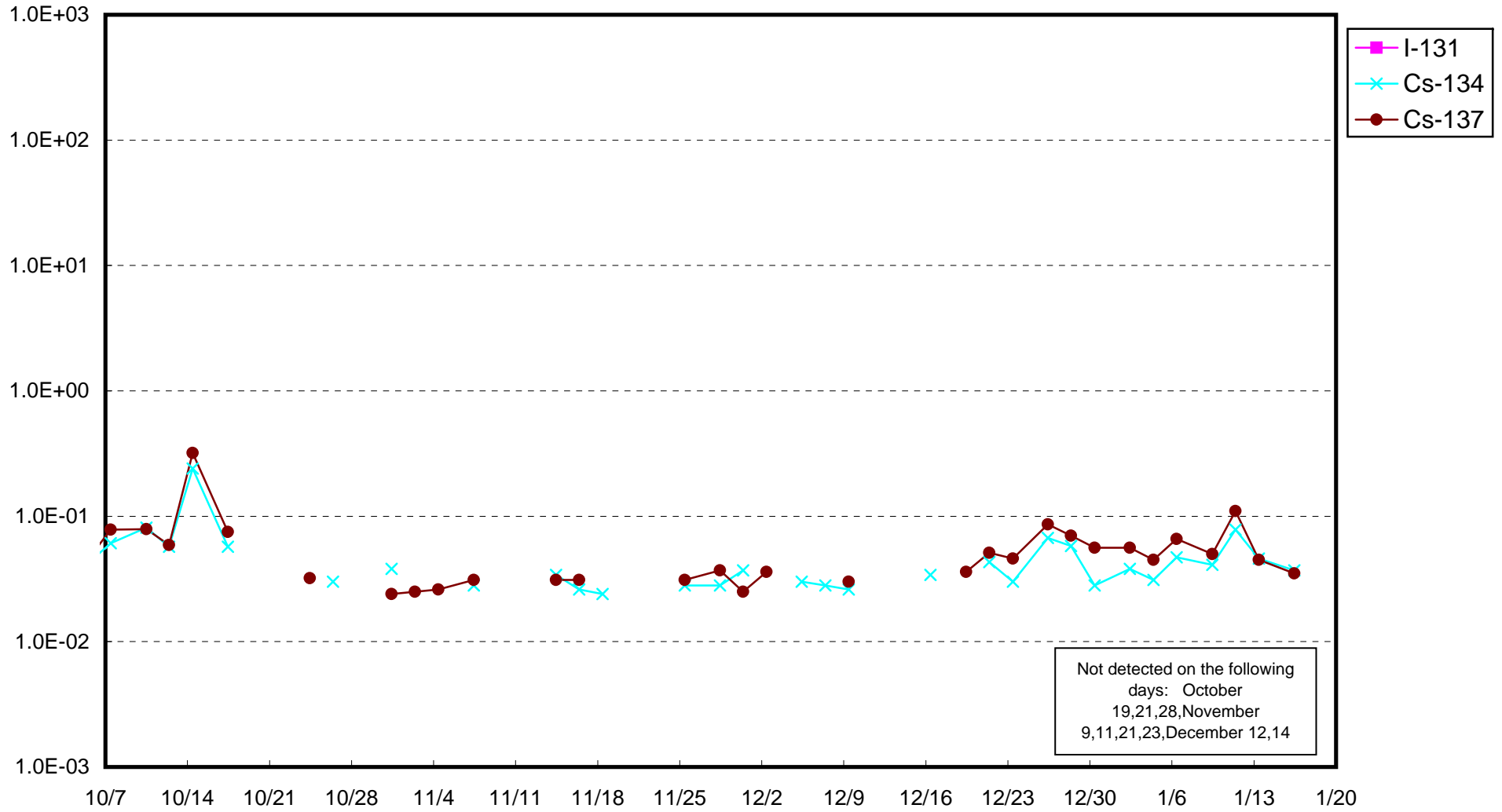
Fukushima Daiichi Nuclear Power Station : Radioactivity Density of Sub-drain at Unit 1 (Bq/cm<sup>3</sup>)



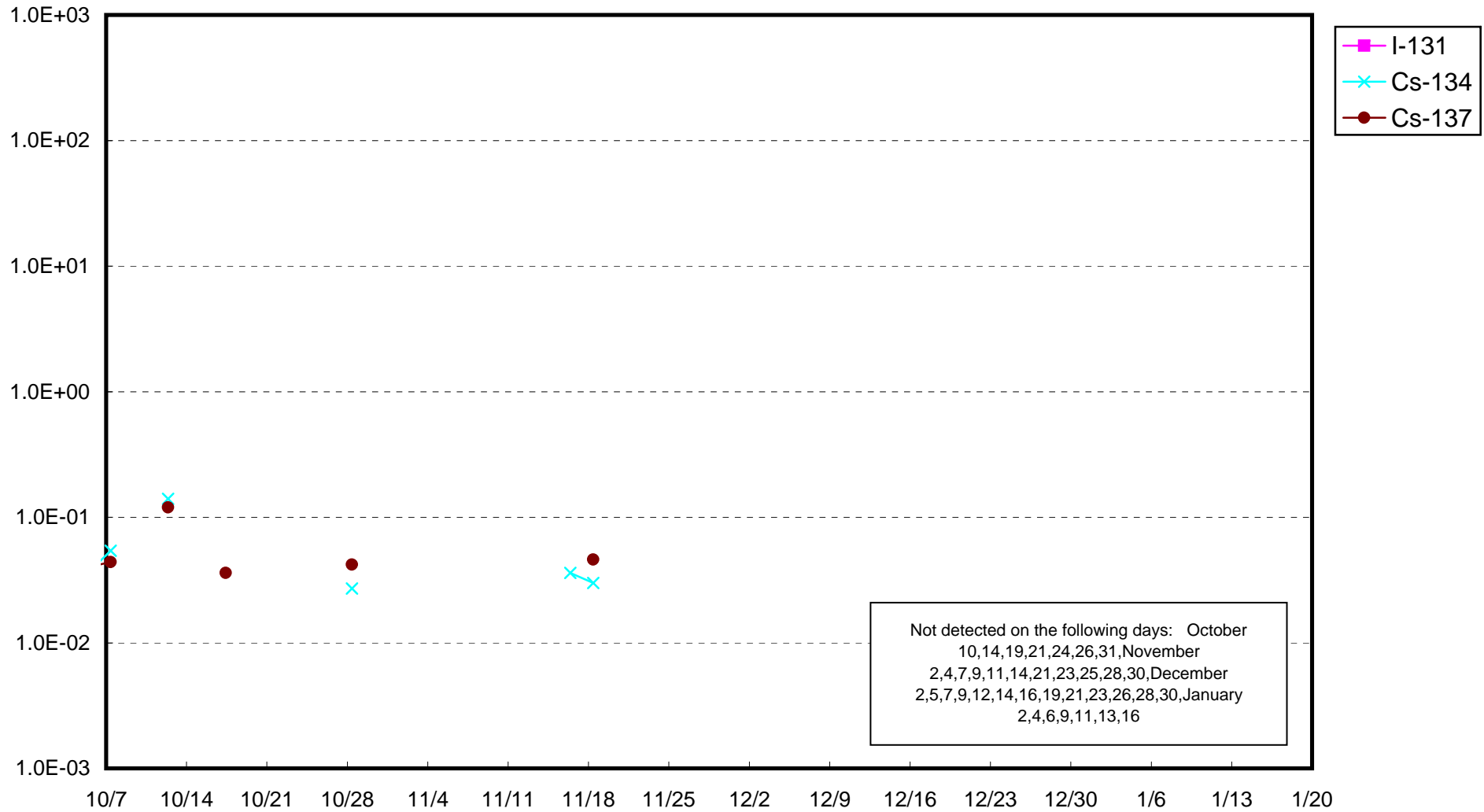
Fukushima Daiichi Nuclear Power Station : Radioactivity Density of Sub-drain at Unit 2 (Bq/cm<sup>3</sup>)



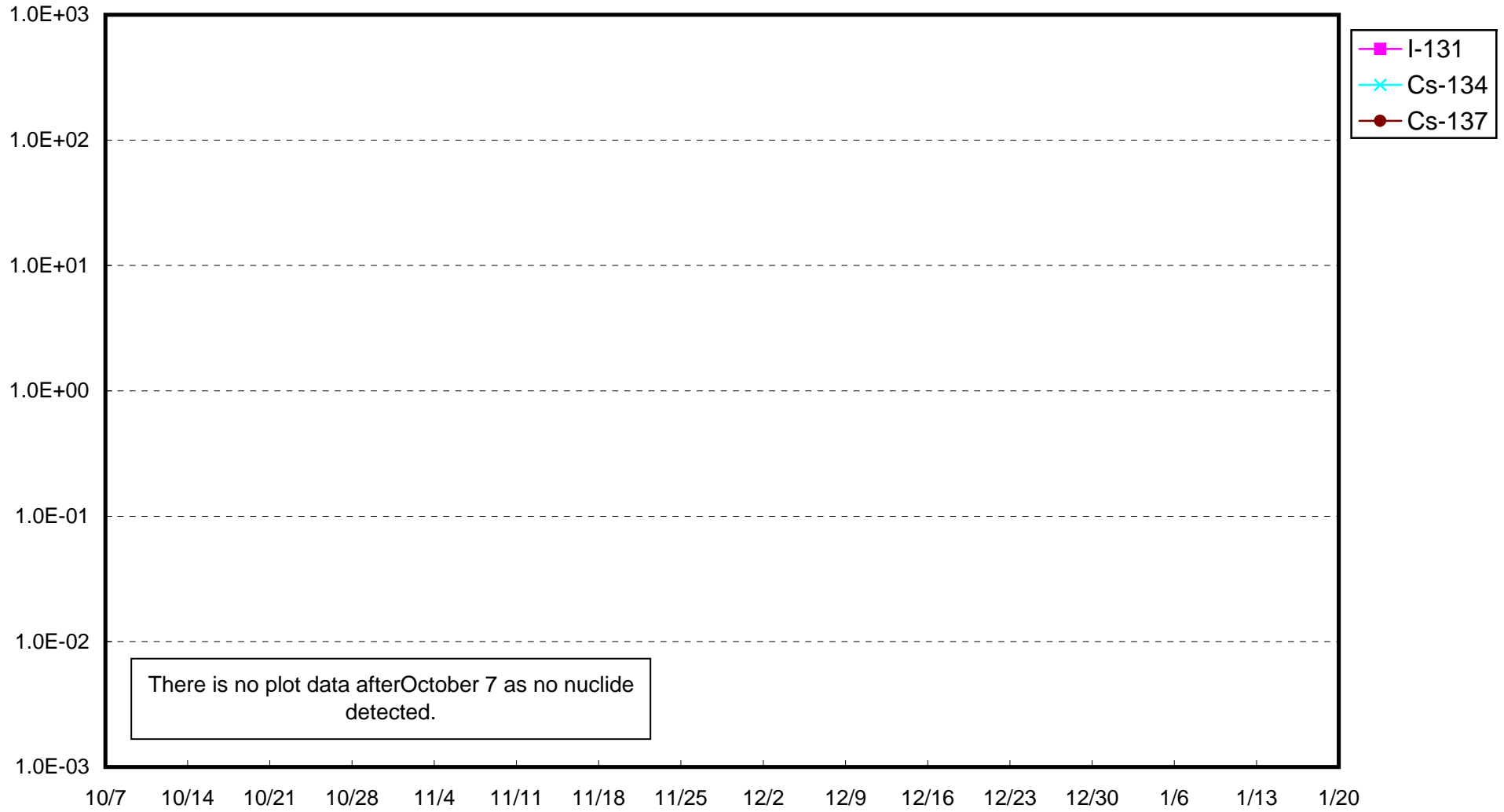
Fukushima Daiichi Nuclear Power Station : Radioactivity Density of Sub-drain at Unit 3 (Bq/cm<sup>3</sup>)



Fukushima Daiichi Nuclear Power Station : Radioactivity Density of Sub-drain at Unit 4 (Bq/cm<sup>3</sup>)



Fukushima Daiichi Nuclear Power Station : Radioactivity Density of Sub-drain at Unit 6 (Bq/cm<sup>3</sup>)



Fukushima Daiichi Nuclear Power Station : Radioactivity Density at the Deep Well at the Site (Bq/cm<sup>3</sup>)

