

Result of nuclide analysis of sub drain of Fukushima Daiichi NPS

Reference

(Data summarized on January 14)

Place of Sampling	Fukushima Daiichi NPS 1U sub-drain	Fukushima Daiichi NPS 2U sub-drain	Fukushima Daiichi NPS 3U sub-drain	Fukushima Daiichi NPS 4U sub-drain	Fukushima Daiichi NPS 5U sub-drain	Fukushima Daiichi NPS 6U sub-drain	Fukushima Daiichi NPS Deep well
Time of Sampling	Jan 13, 2012 09:45 am	Jan 13, 2012 09:55 am	Jan 13, 2012 10:05 am	Jan 13, 2012 09:57 am	Jan 13, 2012 09:35 am	Jan 13, 2012 09:20 am	Jan 13, 2012 09:10 am
Detected Nuclides (Half-life)	Density of sample (Bq/cm3)						
I-131 (about 8 days)	ND	ND	ND	ND	ND	ND	ND
Cs-134 (about 2 years)	3.8E-01	7.7E-01	4.6E-02	ND	ND	ND	ND
Cs-137 (about 30 years)	5.9E-01	1.1E+00	4.5E-02	ND	ND	ND	ND

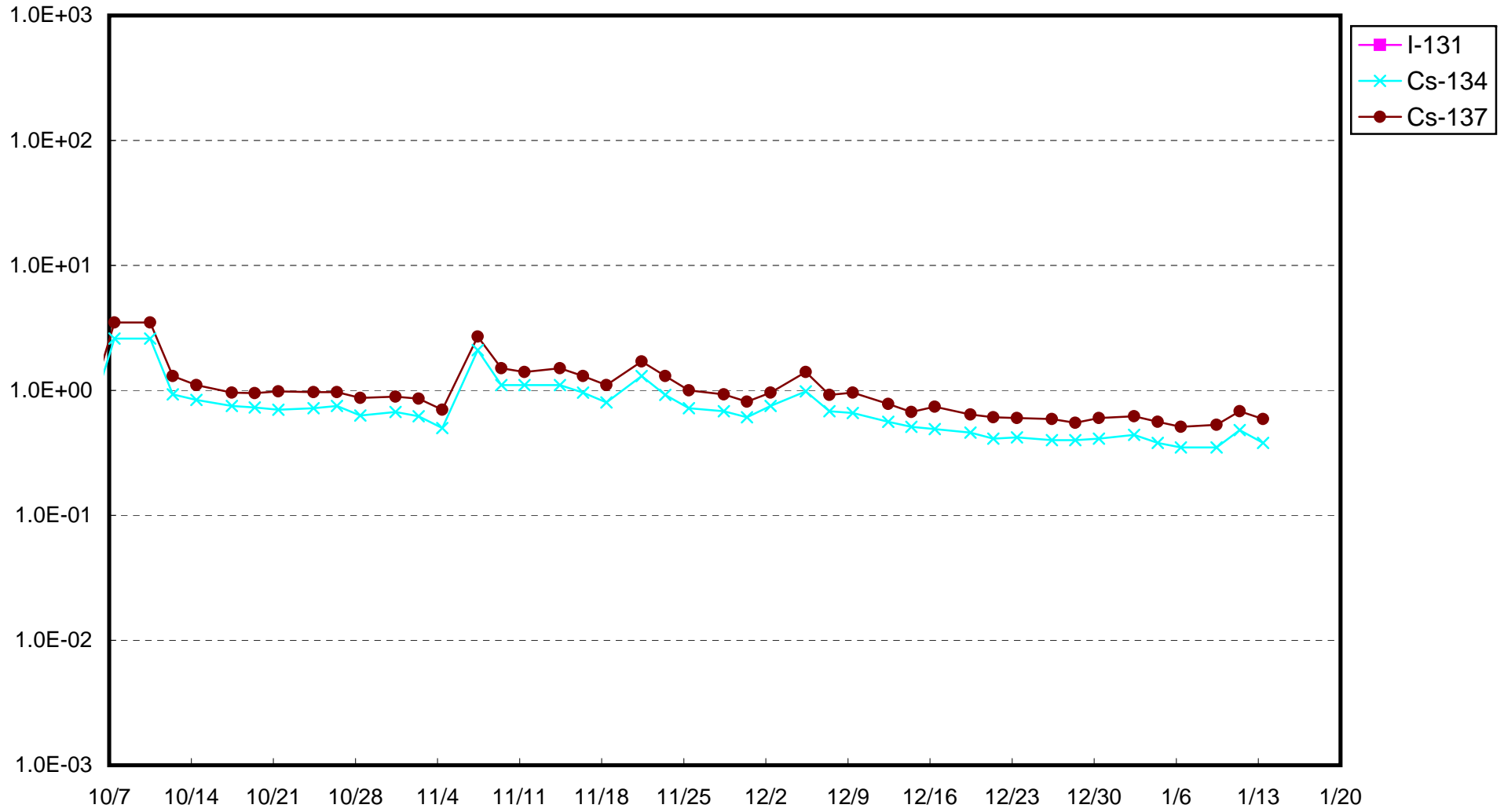
* O.OE - O means O.O x 10-O

* Data of other nuclides are under evaluation.

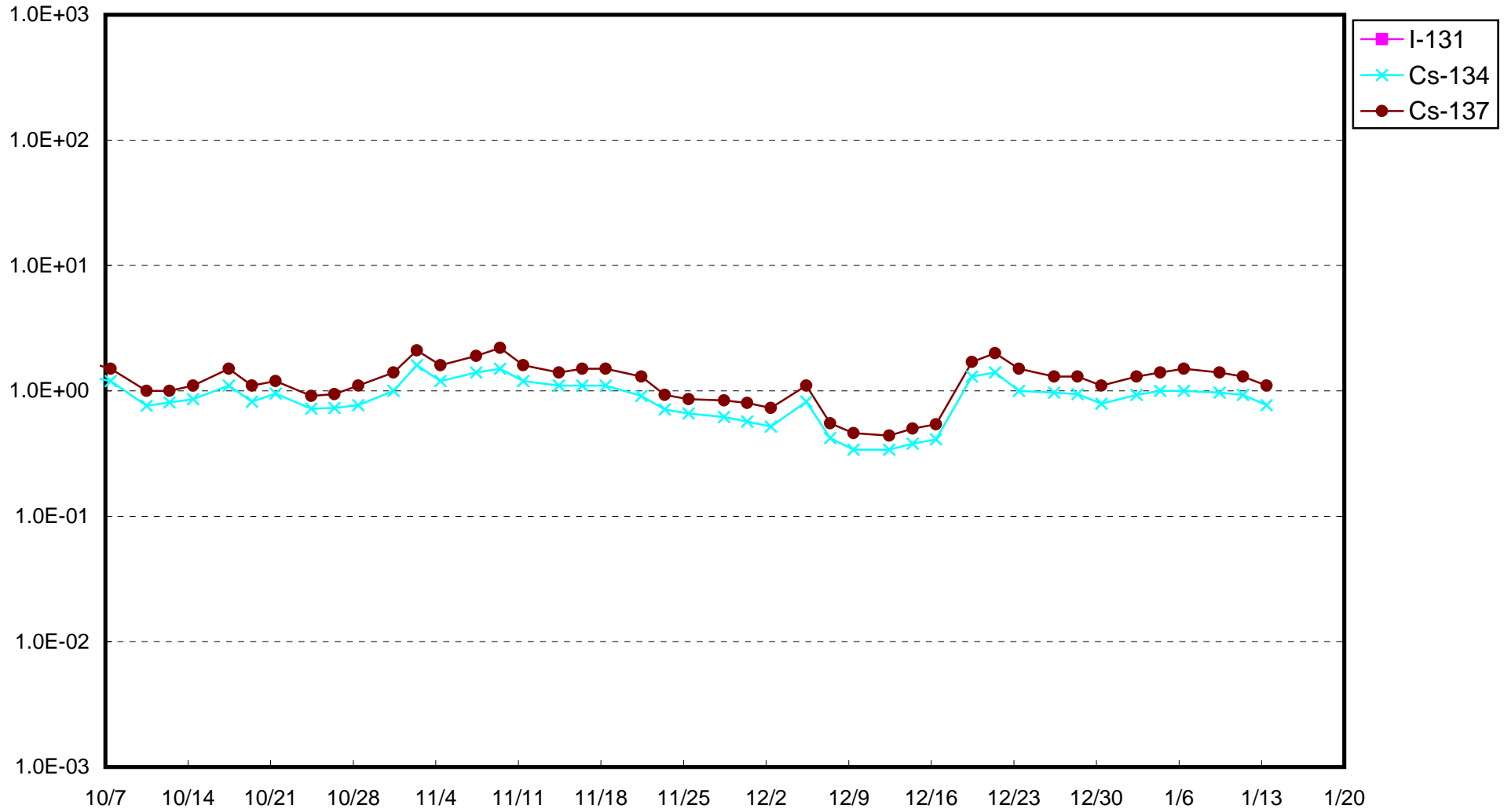
* "ND" means the sampled data is below measurable limit. I-131: approx. 2E-2Bq/cm3, Cs-134: approx. 2E-2Bq/cm3, Cs-137: approx. 3E-2Bq/cm3)

Please note that these nuclides are sometimes detected even when they are below the limits, contingent on the detector or samples.

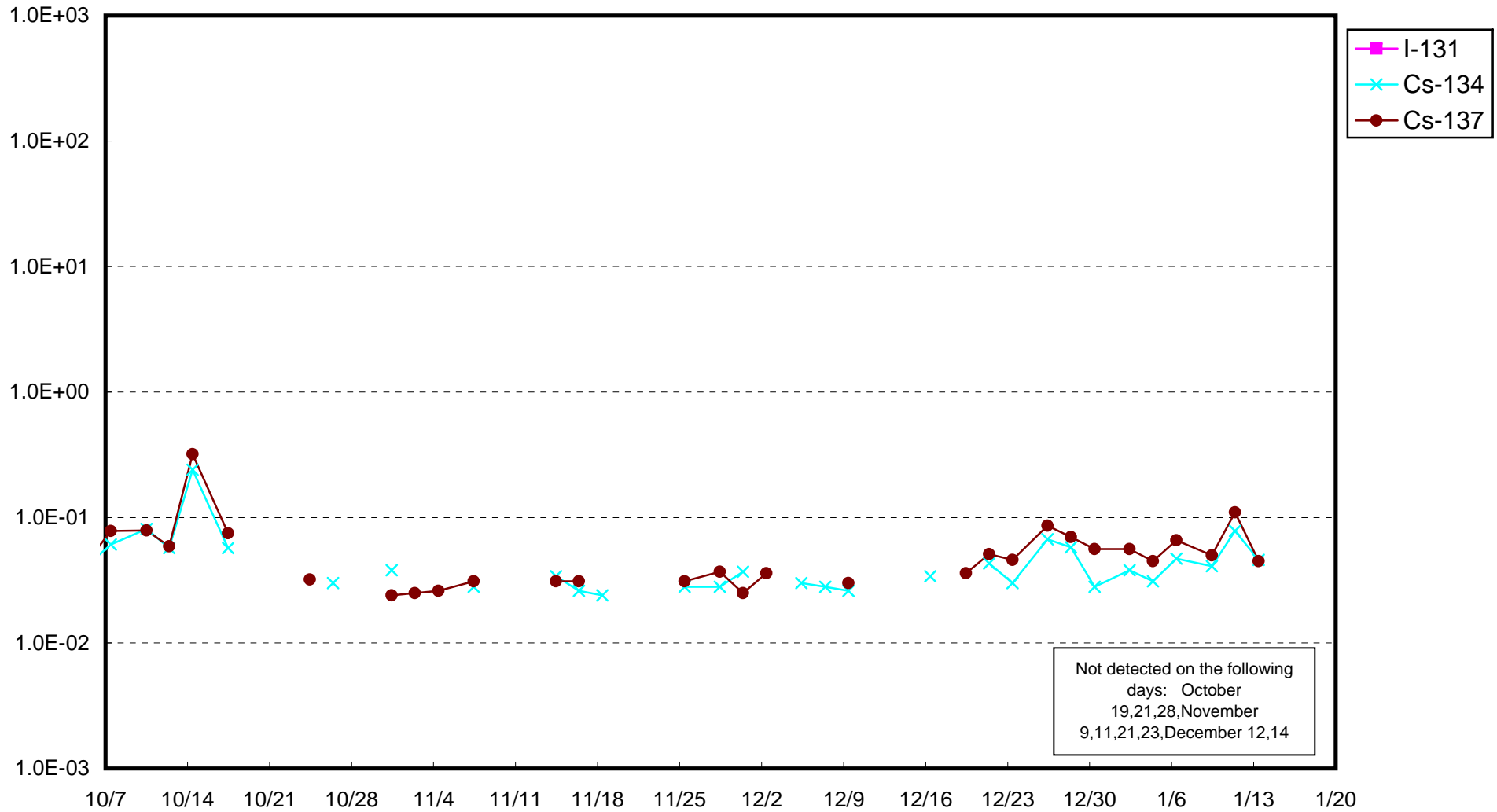
Fukushima Daiichi Nuclear Power Station : Radioactivity Density of Sub-drain at Unit 1 (Bq/cm³)



Fukushima Daiichi Nuclear Power Station : Radioactivity Density of Sub-drain at Unit 2 (Bq/cm³)

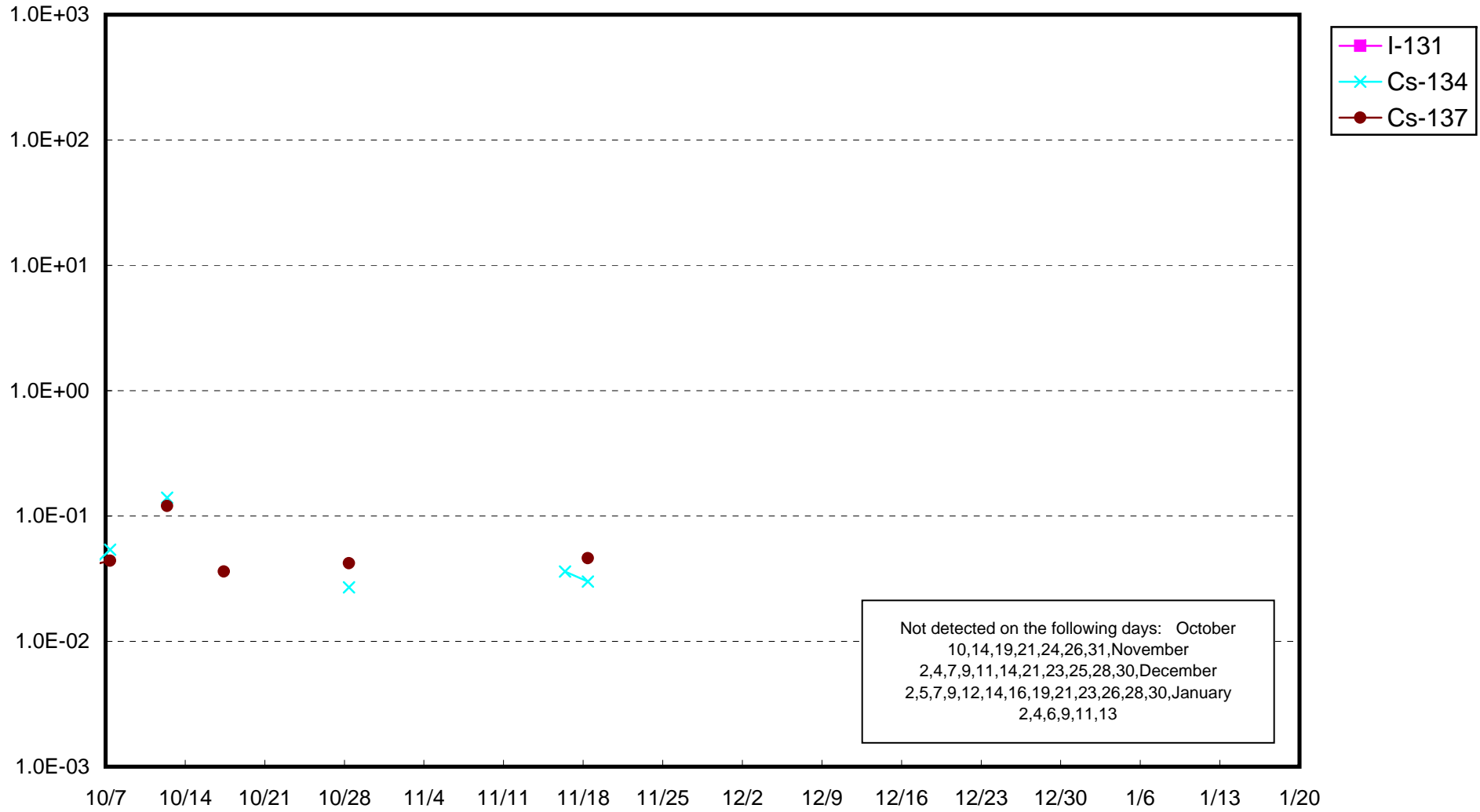


Fukushima Daiichi Nuclear Power Station : Radioactivity Density of Sub-drain at Unit 3 (Bq/cm³)

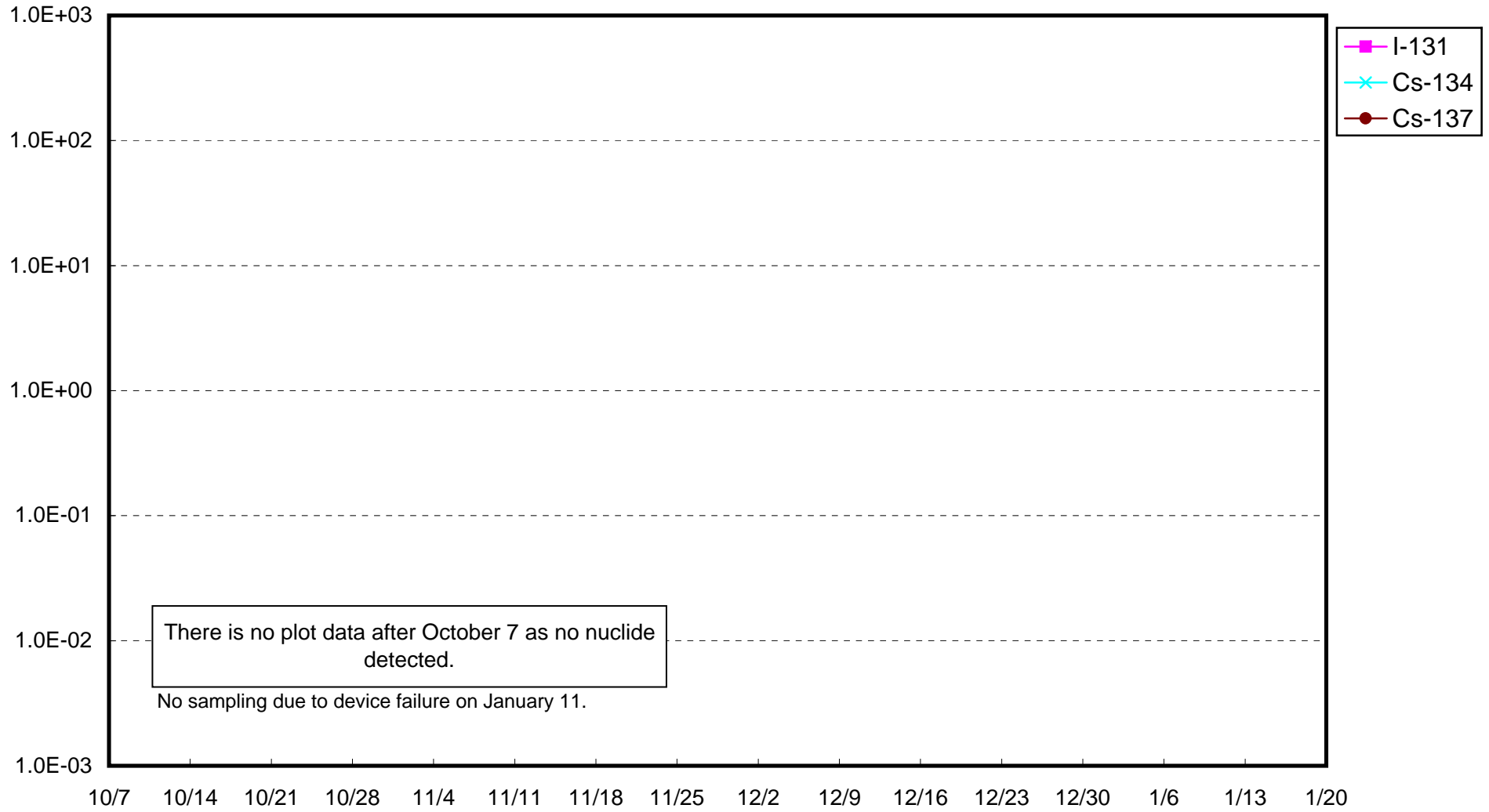


Not detected on the following days: October 19,21,28,November 9,11,21,23,December 12,14

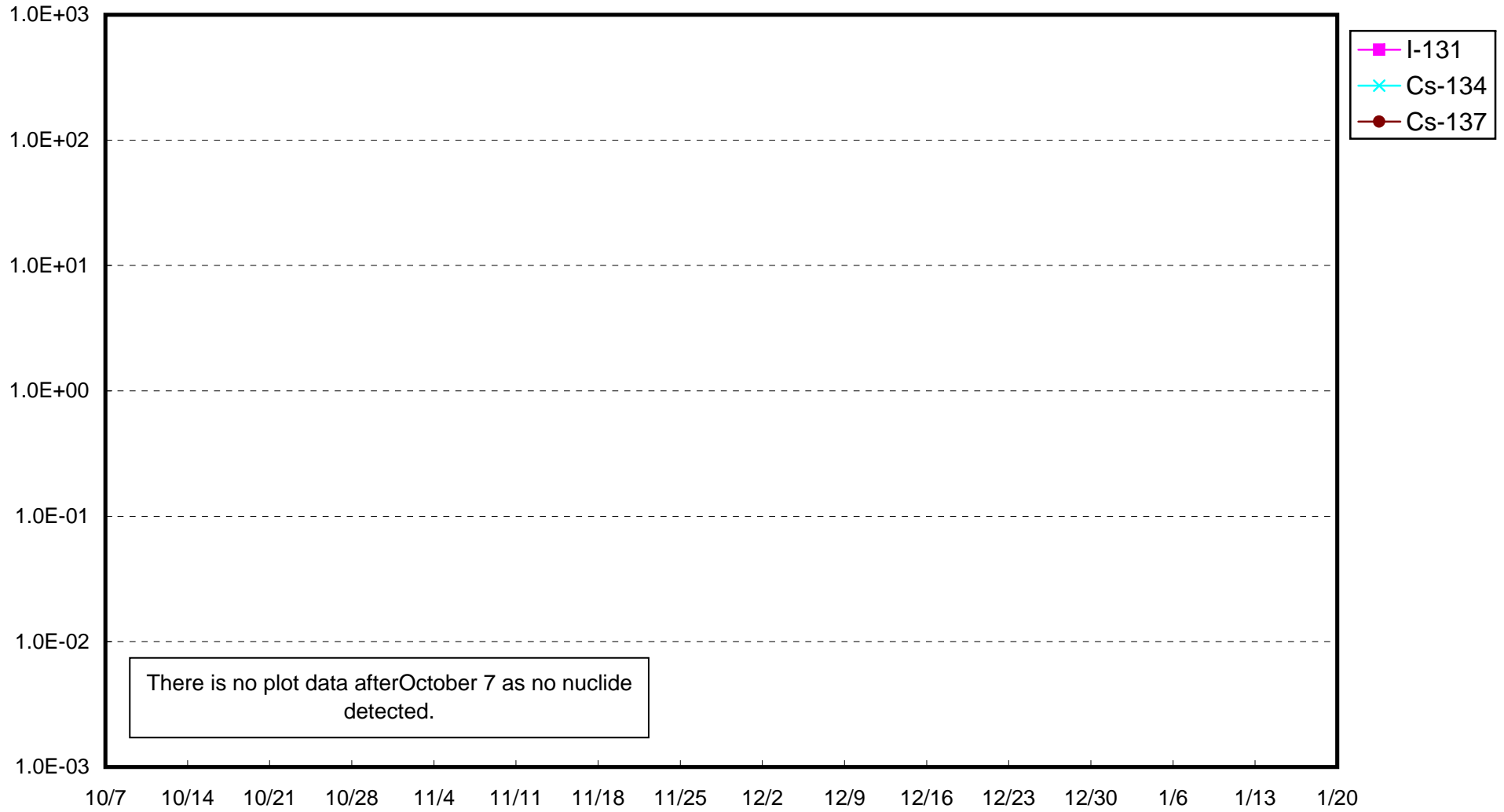
Fukushima Daiichi Nuclear Power Station : Radioactivity Density of Sub-drain at Unit 4 (Bq/cm³)



Fukushima Daiichi Nuclear Power Station : Radioactivity Density of Sub-drain at Unit 5 (Bq/cm³)



Fukushima Daiichi Nuclear Power Station : Radioactivity Density of Sub-drain at Unit 6 (Bq/cm³)



Fukushima Daiichi Nuclear Power Station : Radioactivity Density at the Deep Well at the Site (Bq/cm³)

