

Result of nuclide analysis of sub drain of Fukushima Daiichi NPS

| |
|-----------|
| Reference |
|-----------|

(Data summarized on January 12)

| Place of Sampling | Fukushima Daiichi NPS 1U sub-drain | Fukushima Daiichi NPS 2U sub-drain | Fukushima Daiichi NPS 3U sub-drain | Fukushima Daiichi NPS 4U sub-drain | Fukushima Daiichi NPS 5U sub-drain | Fukushima Daiichi NPS 6U sub-drain | Fukushima Daiichi NPS Deep well |
|----------------------------------|--|---------------------------------------|---------------------------------------|---------------------------------------|---------------------------------------|---------------------------------------|------------------------------------|
| Time of Sampling | January 11, 2012 9:50 AM | January 11, 2012 9:55 AM | January 11, 2012 10:00 AM | January 11, 2012 10:01 AM | January 11, 2012 (Not sampled) | January 11, 2012 9:40 AM | January 11, 2012 9:05 AM |
| Detected Nuclides (Half-life) | Density of sample (Bq/cm ³) | | | | | | |
| I-131 (about 8 days) | ND | ND | ND | ND | - | ND | ND |
| Cs-134 (about 2 years) | 4.8E-01 | 9.3E-01 | 7.8E-02 | ND | - | ND | ND |
| Cs-137 (about 30 years) | 6.8E-01 | 1.3E+00 | 1.1E-01 | ND | - | ND | ND |

* O.OE - O means O.O x 10-O

* Data of other nuclides are under evaluation.

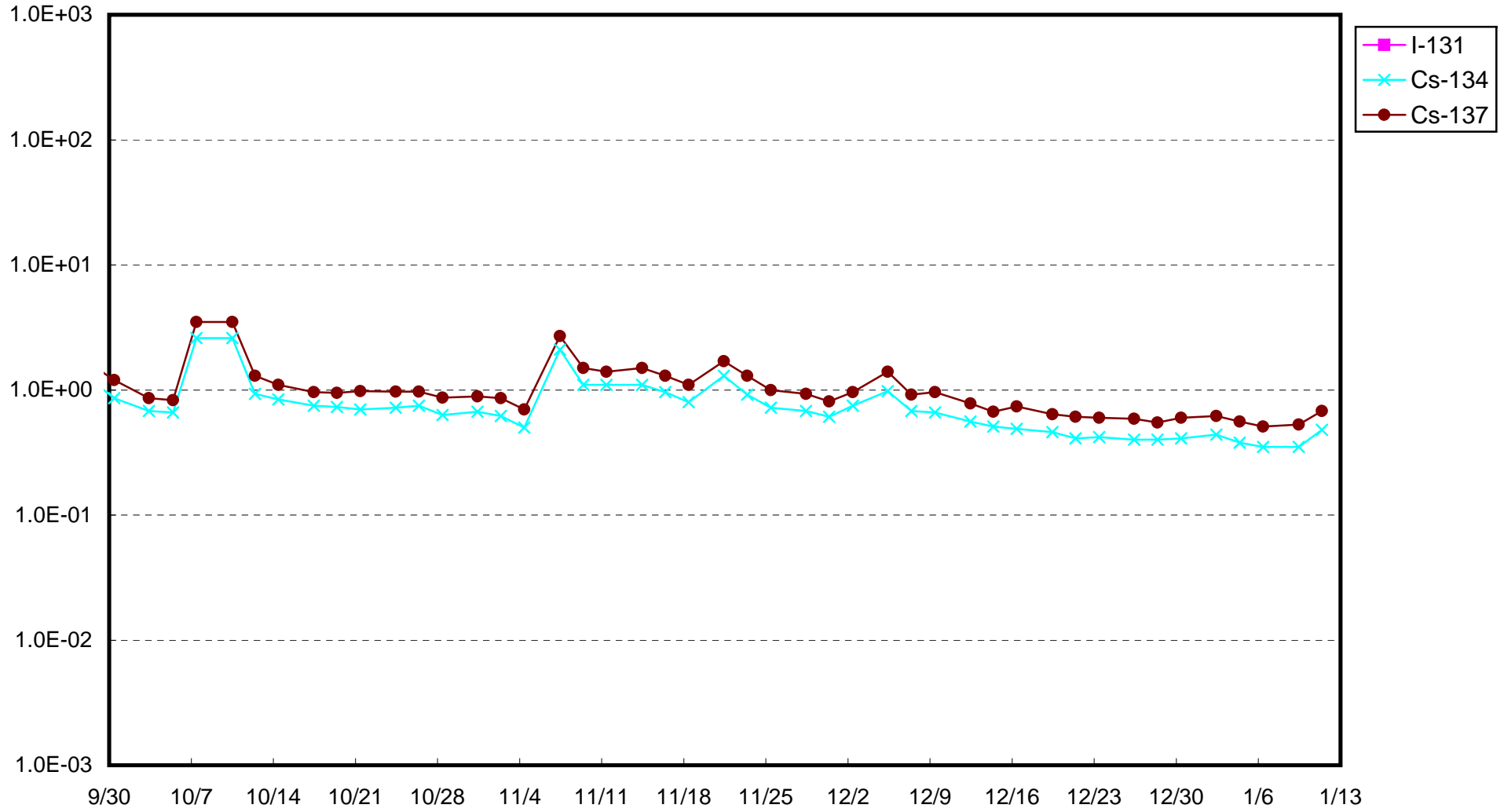
* "ND" means the sampled data is below measurable limit.

I-131: approx. 3E-2Bq/cm³, Cs-134: approx. 2E-2Bq/cm³, Cs-137: approx. 3E-2Bq/cm³)

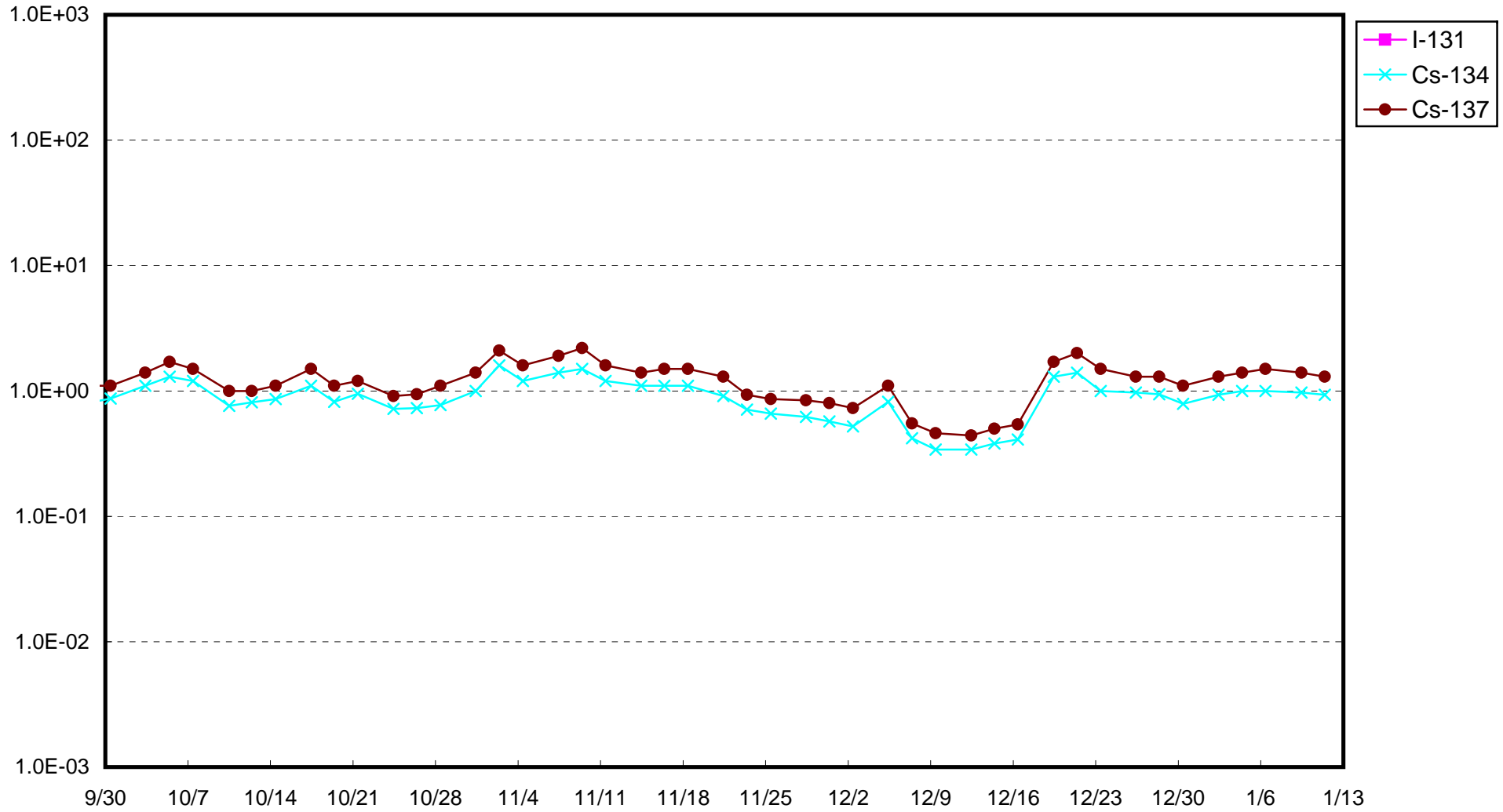
Please note that these nuclides are sometimes detected even when they are below the limits, contingent on the detector or samples.

| |
|---------------------------------------|
| Not sampled due to instrument failure |
|---------------------------------------|

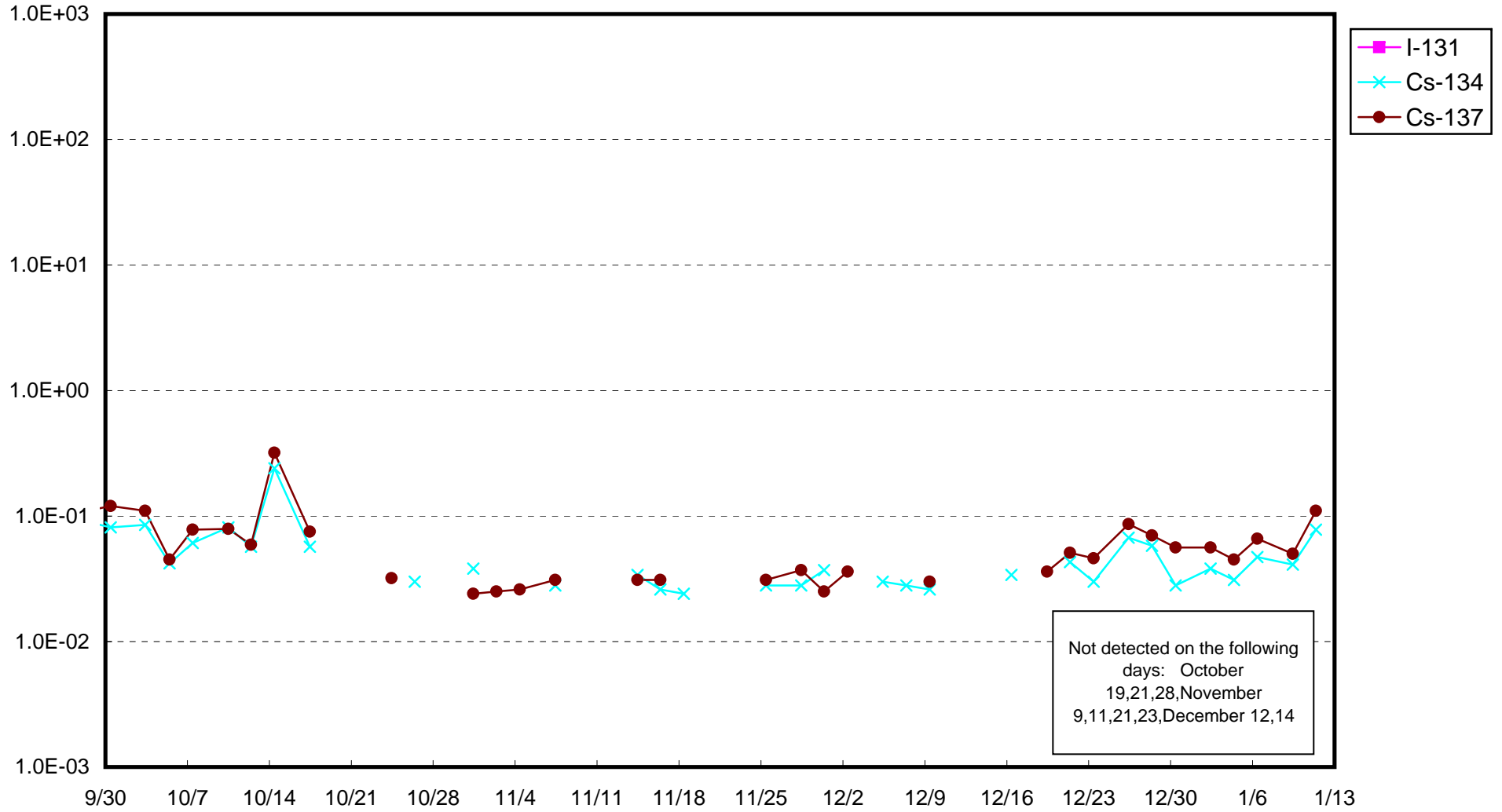
Fukushima Daiichi Nuclear Power Station : Radioactivity Density of Sub-drain at Unit 1 (Bq/cm³)



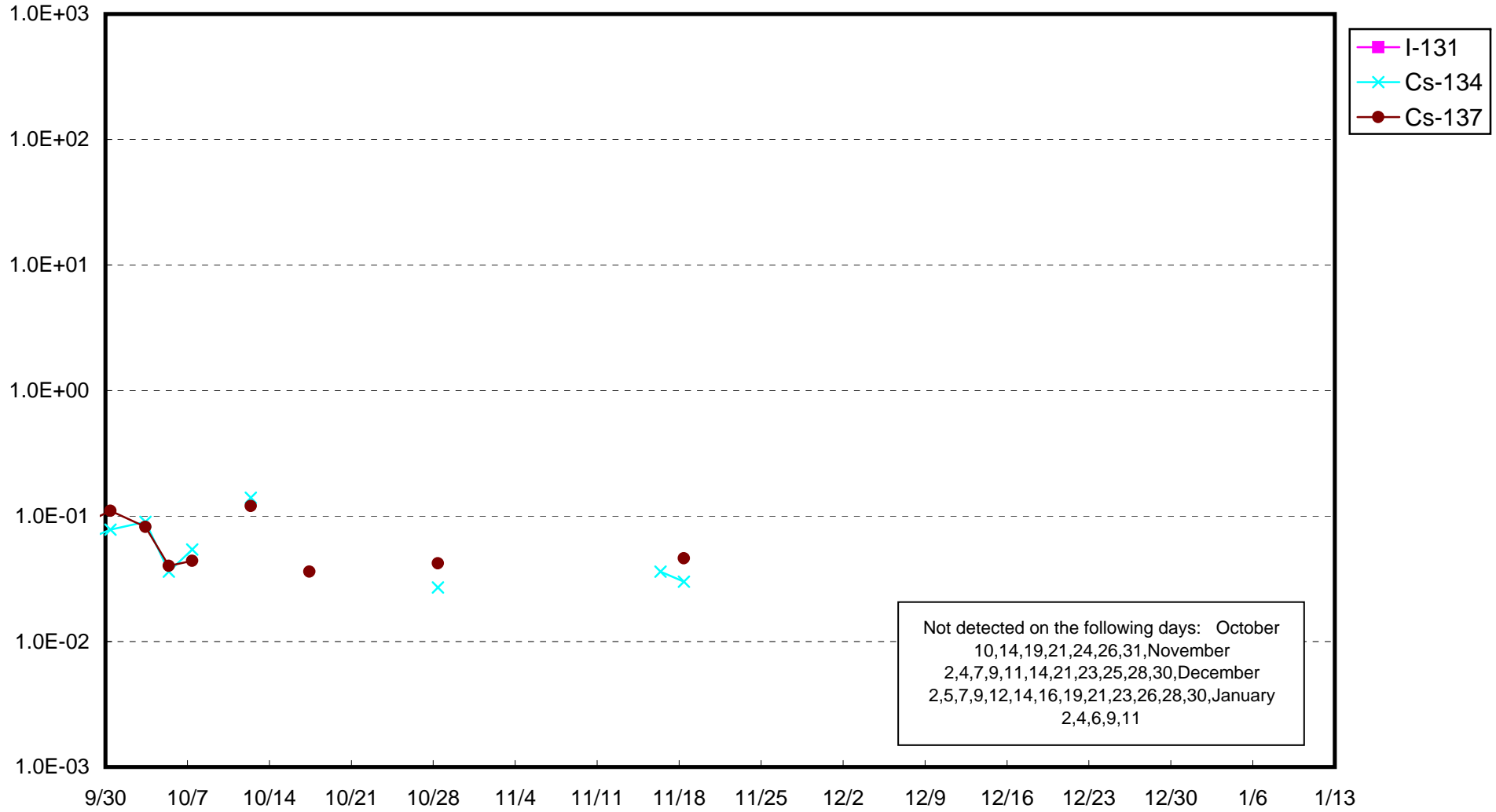
Fukushima Daiichi Nuclear Power Station : Radioactivity Density of Sub-drain at Unit 2 (Bq/cm³)



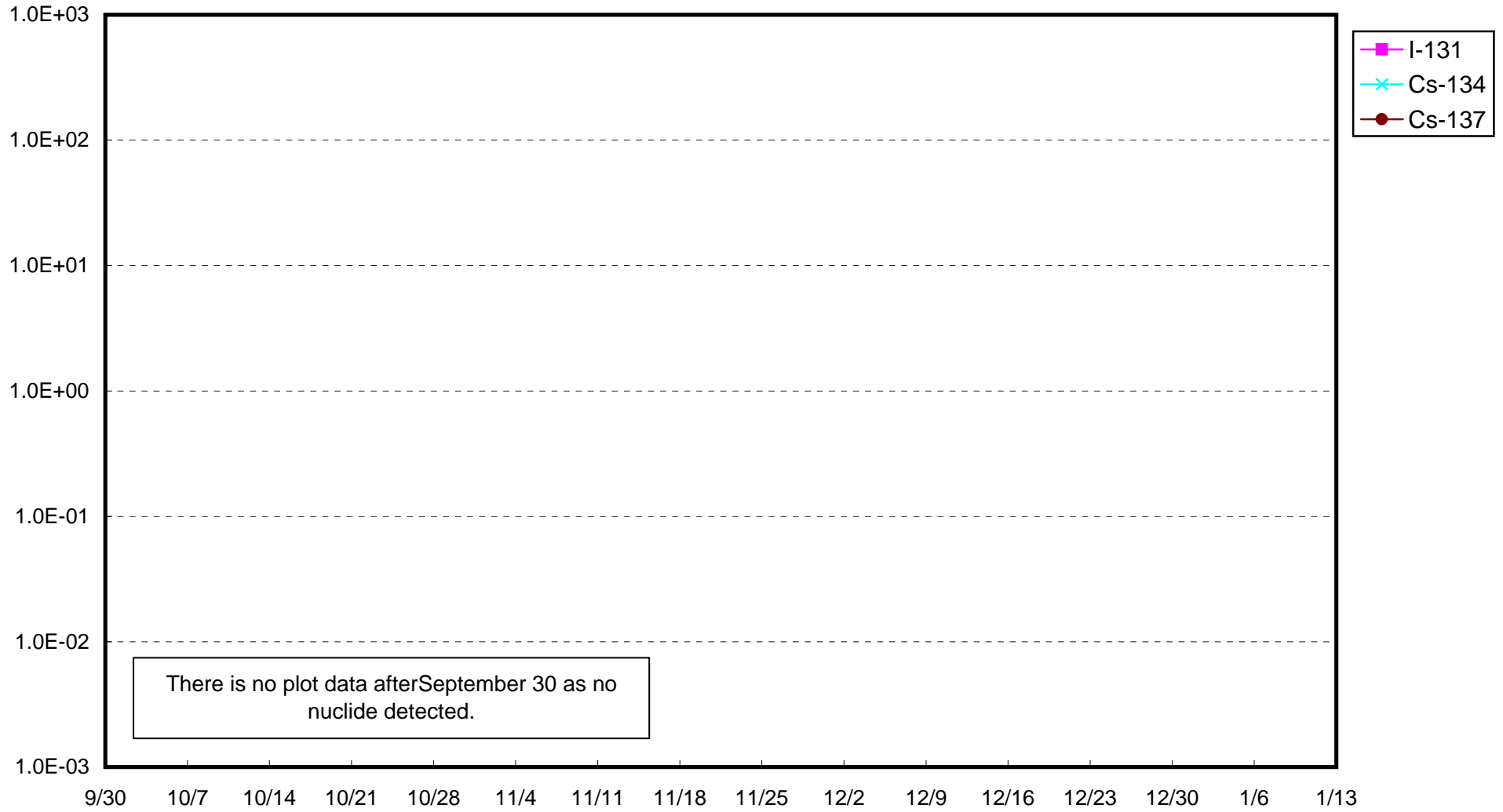
Fukushima Daiichi Nuclear Power Station : Radioactivity Density of Sub-drain at Unit 3 (Bq/cm³)



Fukushima Daiichi Nuclear Power Station : Radioactivity Density of Sub-drain at Unit 4 (Bq/cm³)



Fukushima Daiichi Nuclear Power Station : Radioactivity Density of Sub-drain at Unit 6 (Bq/cm³)



Fukushima Daiichi Nuclear Power Station : Radioactivity Density at the Deep Well at the Site (Bq/cm³)

