

Result of nuclide analysis of sub drain of Fukushima Daiichi NPS

| |
|-----------|
| Reference |
|-----------|

(Data summarized on January 10)

| Place of Sampling | Fukushima Daiichi NPS 1U sub-drain | Fukushima Daiichi NPS 2U sub-drain | Fukushima Daiichi NPS 3U sub-drain | Fukushima Daiichi NPS 4U sub-drain | Fukushima Daiichi NPS 5U sub-drain | Fukushima Daiichi NPS 6U sub-drain | Fukushima Daiichi NPS Deep well |
|----------------------------------|--|---------------------------------------|---------------------------------------|---------------------------------------|---------------------------------------|---------------------------------------|------------------------------------|
| Time of Sampling | January 9, 2012 10:30 AM | January 9, 2012 10:33 AM | January 9, 2012 10:35 AM | January 9, 2012 9:10 AM | January 9, 2012 10:20 AM | January 9, 2012 10:15 AM | January 9, 2012 9:10 AM |
| Detected Nuclides (Half-life) | Density of sample (Bq/cm ³) | | | | | | |
| I-131 (about 8 days) | ND | ND | ND | ND | ND | ND | ND |
| Cs-134 (about 2 years) | 3.5E-01 | 9.7E-01 | 4.1E-02 | ND | ND | ND | ND |
| Cs-137 (about 30 years) | 5.3E-01 | 1.4E+00 | 5.0E-02 | ND | ND | ND | ND |

* O.OE - O means O.O x 10-O

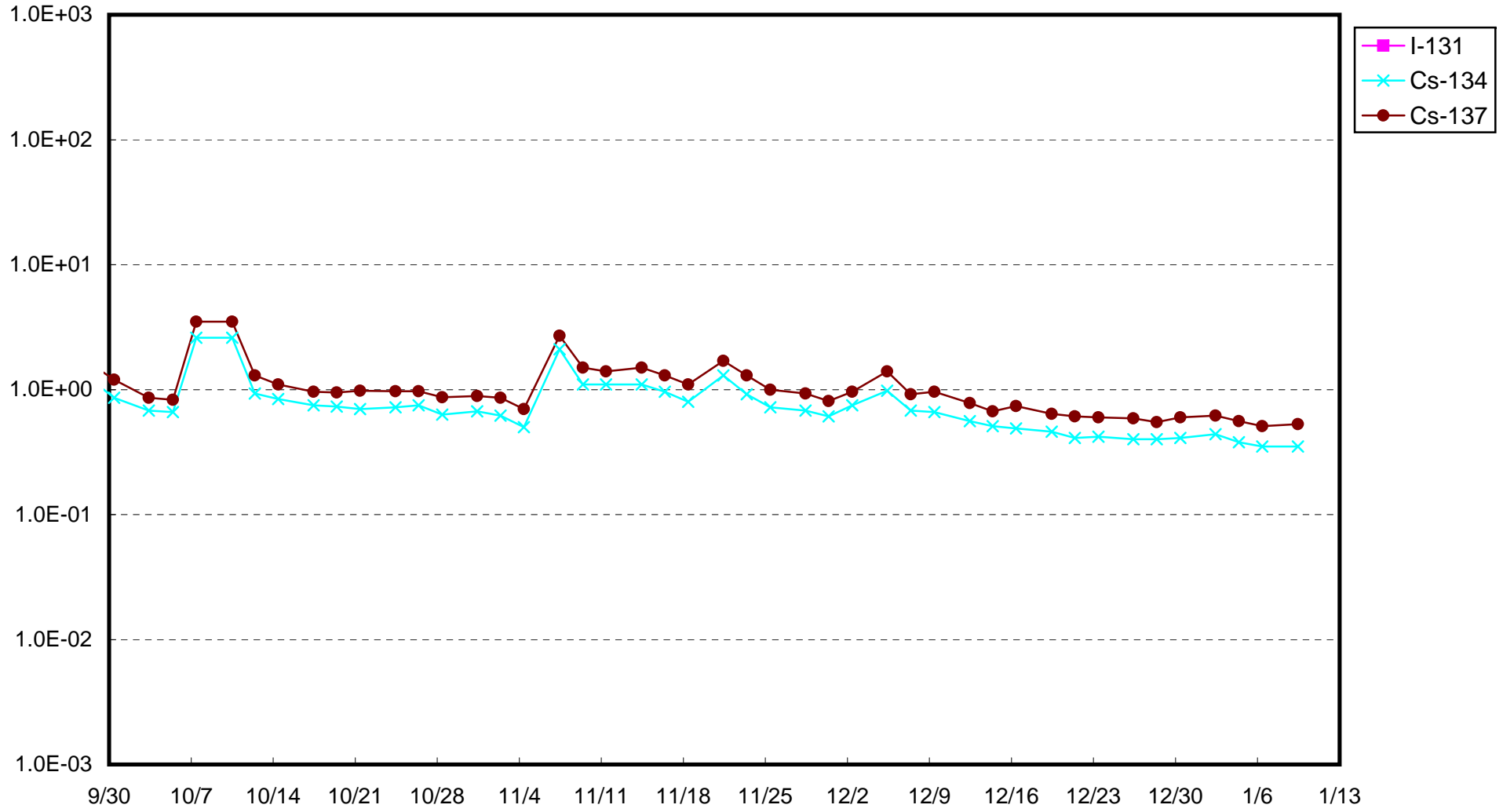
* Data of other nuclides are under evaluation.

* "ND" means the sampled data is below measurable limit.

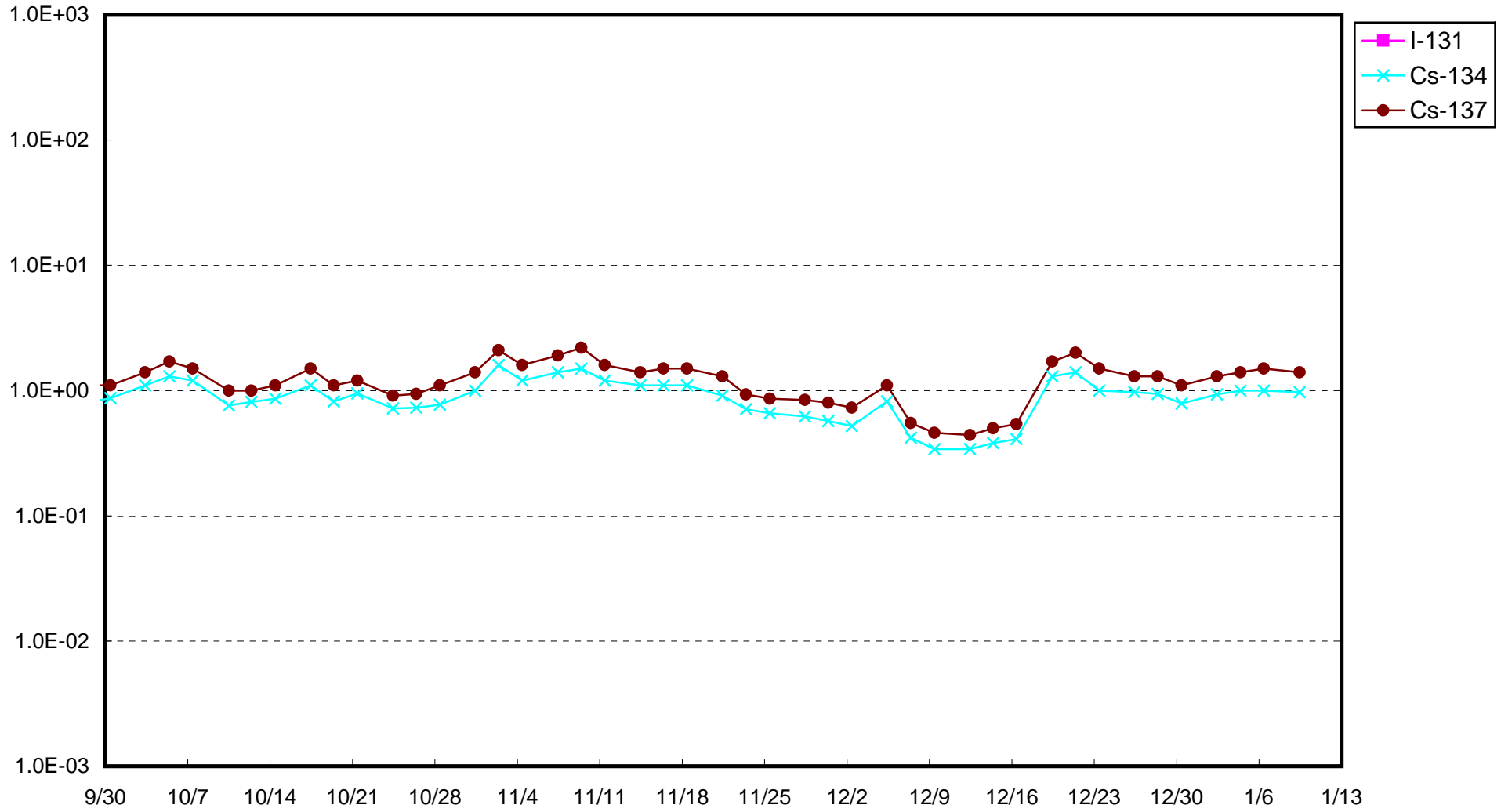
I-131: approx. 3E-2Bq/cm³, Cs-134: approx. 2E-2Bq/cm³, Cs-137: approx. 3E-2Bq/cm³)

Please note that these nuclides are sometimes detected even when they are below the limits, contingent on the detector or samples.

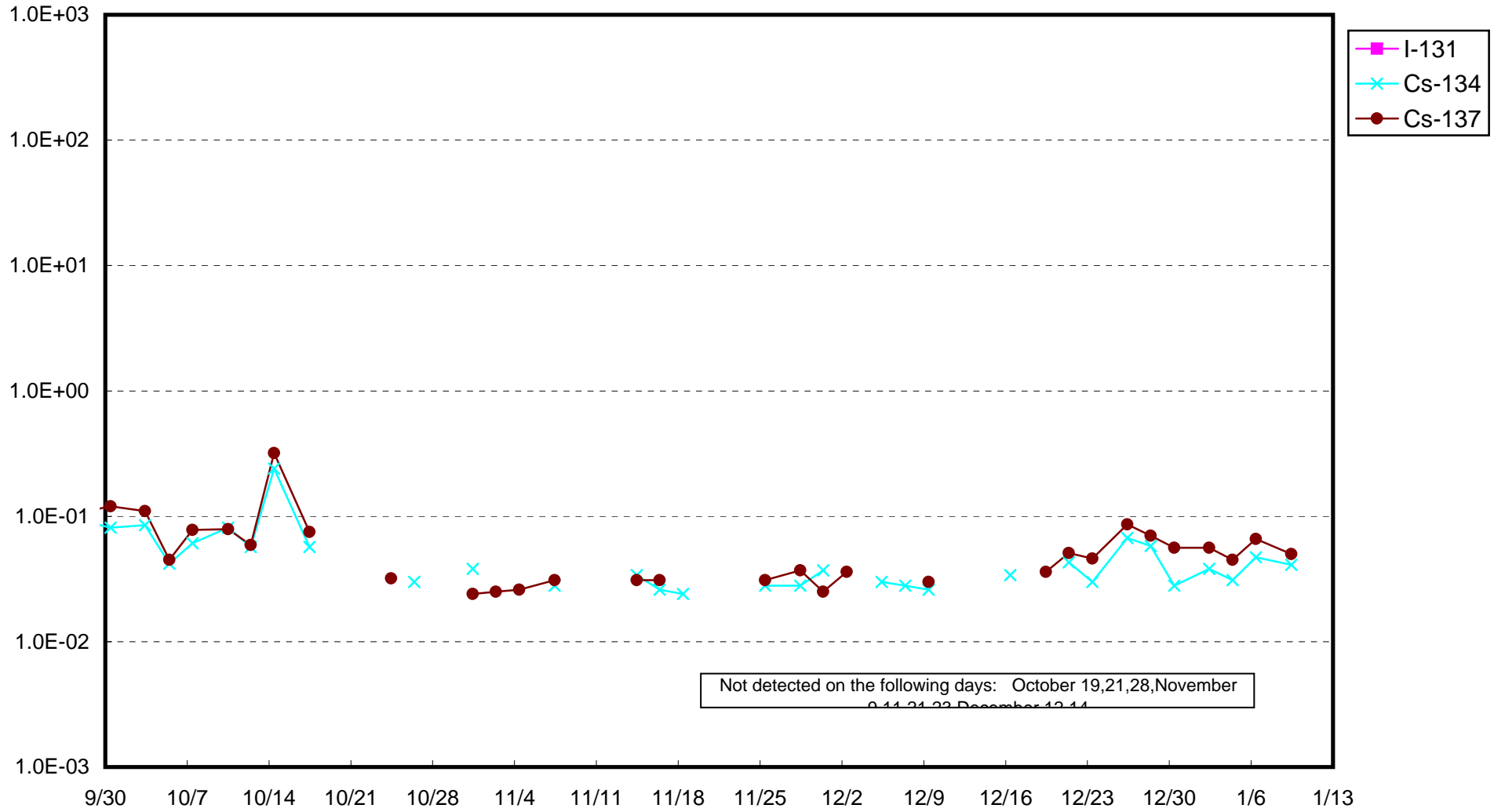
Fukushima Daiichi Nuclear Power Station : Radioactivity Density of Sub-drain at Unit 1 (Bq/cm³)



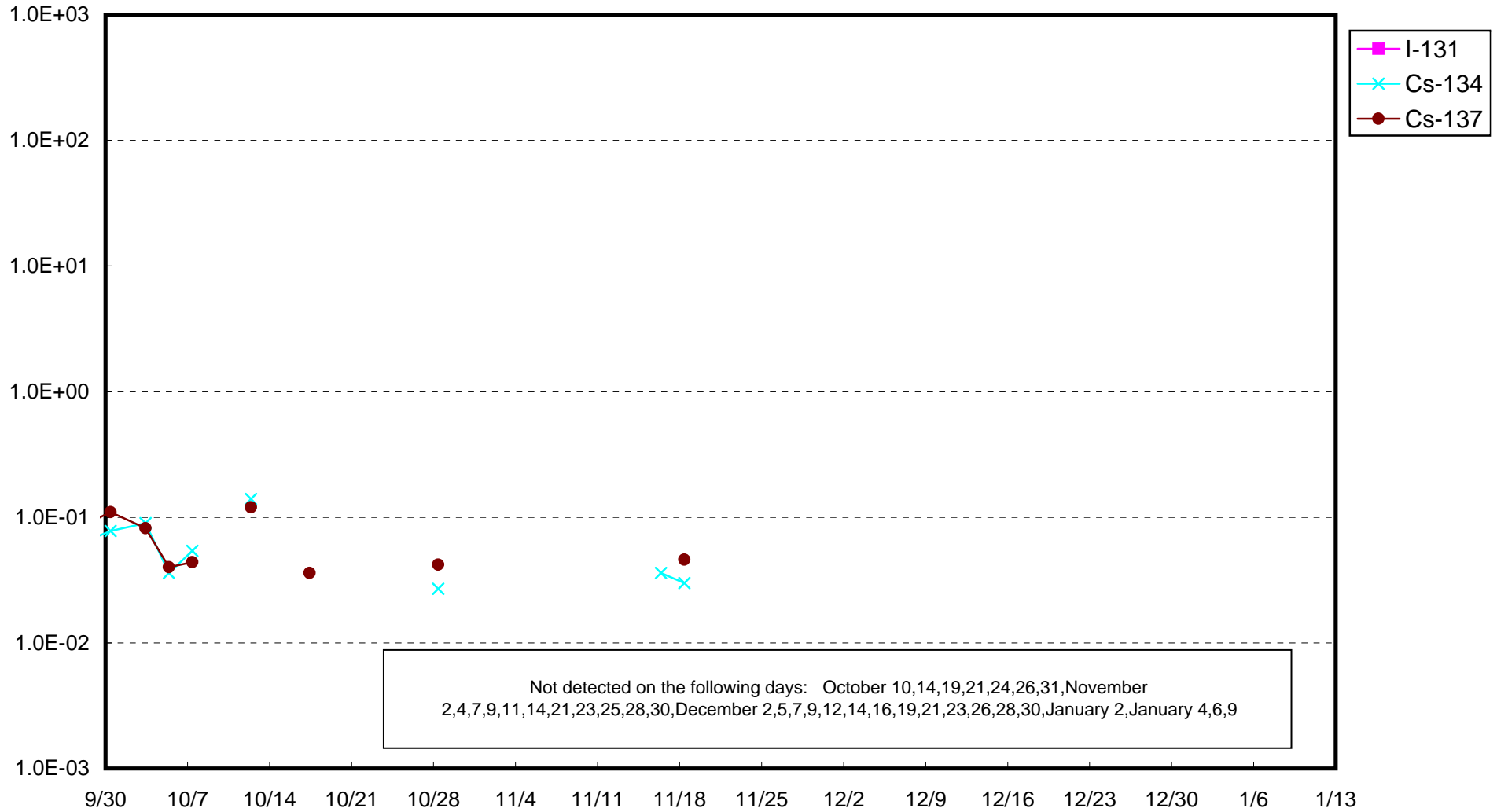
Fukushima Daiichi Nuclear Power Station : Radioactivity Density of Sub-drain at Unit 2 (Bq/cm³)



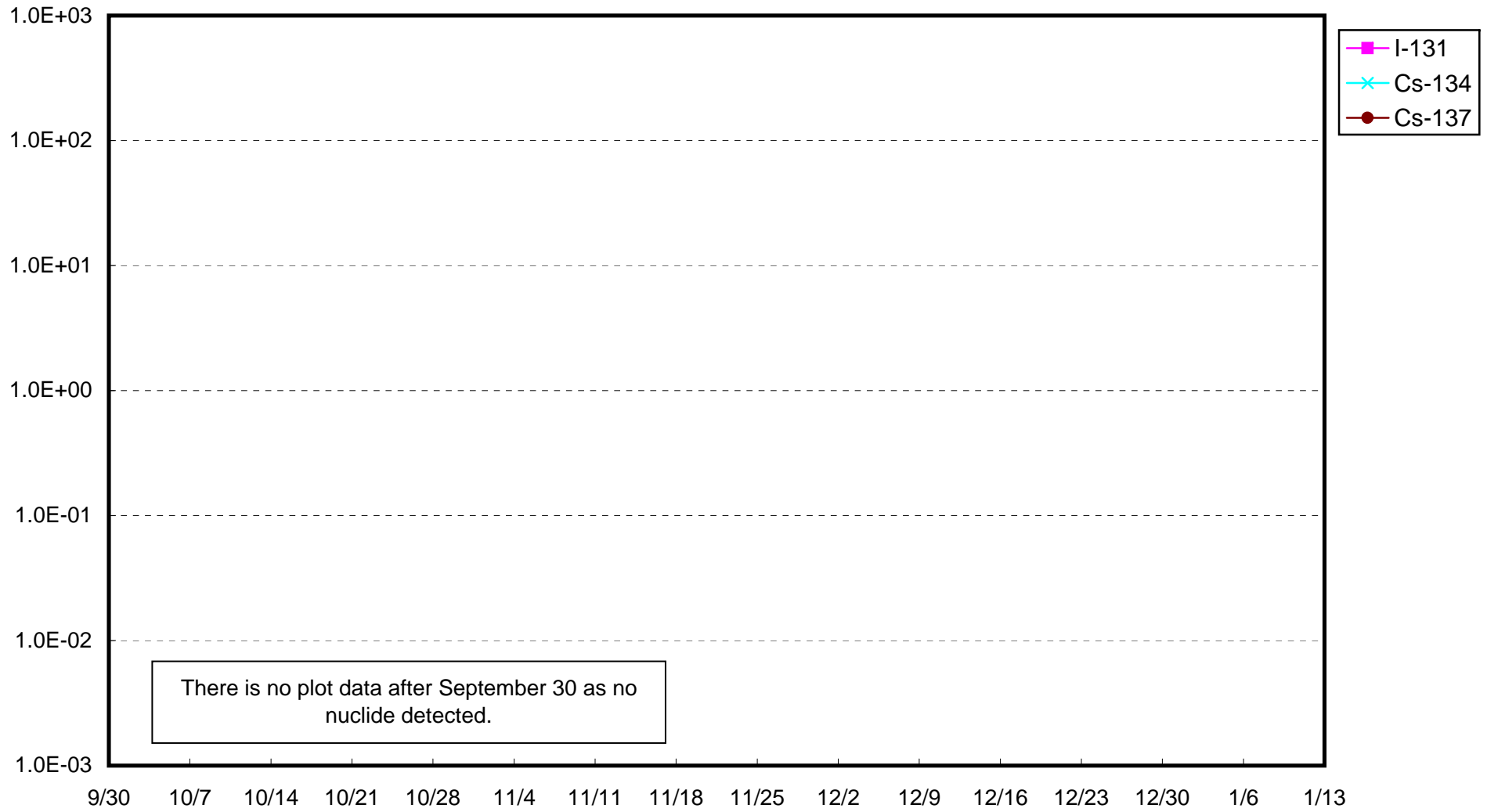
Fukushima Daiichi Nuclear Power Station : Radioactivity Density of Sub-drain at Unit 3 (Bq/cm³)



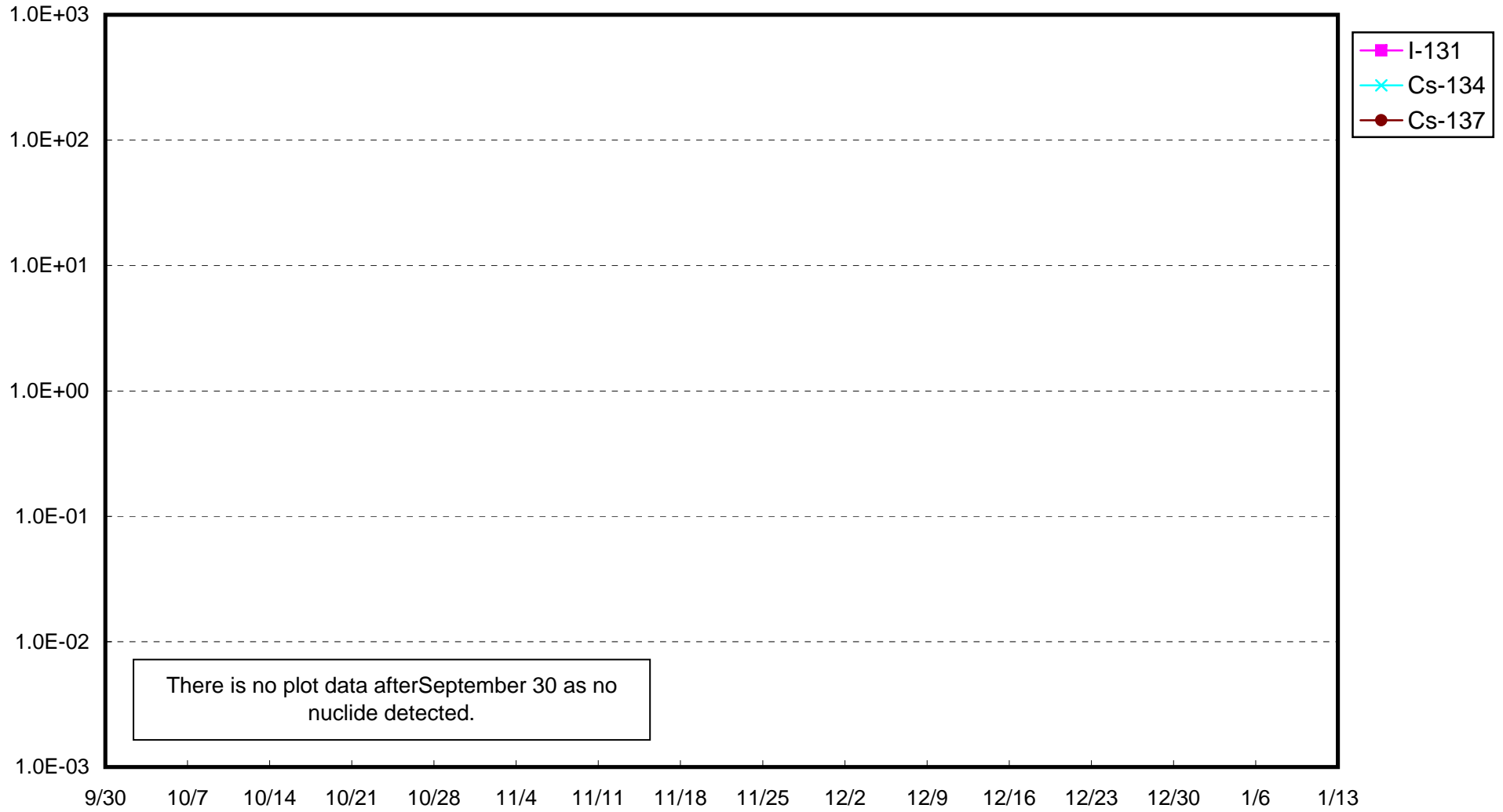
Fukushima Daiichi Nuclear Power Station : Radioactivity Density of Sub-drain at Unit 4 (Bq/cm³)



Fukushima Daiichi Nuclear Power Station : Radioactivity Density of Sub-drain at Unit 5 (Bq/cm³)



Fukushima Daiichi Nuclear Power Station : Radioactivity Density of Sub-drain at Unit 6 (Bq/cm³)



Fukushima Daiichi Nuclear Power Station : Radioactivity Density at the Deep Well at the Site (Bq/cm³)

