

## Result of nuclide analysis of sub drain of Fukushima Daiichi NPS

Reference
-----------

(Data summarized on January 7)

Place of Sampling	Fukushima Daiichi NPS 1U sub-drain	Fukushima Daiichi NPS 2U sub-drain	Fukushima Daiichi NPS 3U sub-drain	Fukushima Daiichi NPS 4U sub-drain	Fukushima Daiichi NPS 5U sub-drain	Fukushima Daiichi NPS 6U sub-drain	Fukushima Daiichi NPS Deep well
Time of Sampling	2012/1/6 9:25 AM	2012/1/6 9:30 AM	2012/1/6 9:35 AM	2012/1/6 9:37 AM	2012/1/6 9:20 AM	2012/1/6 9:15 AM	2012/1/6 9:00 AM
Detected Nuclides (Half-life)	Density of sample (Bq/cm <sup>3</sup> )						
I-131 (about 8 days)	ND	ND	ND	ND	ND	ND	ND
Cs-134 (about 2 years)	3.5E-01	1.0E+00	4.7E-02	ND	ND	ND	ND
Cs-137 (about 30 years)	5.1E-01	1.5E+00	6.6E-02	ND	ND	ND	ND

\* 0.0E-0 means 0.0 x 10-0

\* Data of other nuclides are under evaluation.

\* "ND" means the sampled data is below measurable limit.

I-131: approx. 3E-2Bq/cm<sup>3</sup>, Cs-134: approx. 2E-2Bq/cm<sup>3</sup>, Cs-137: approx. 3E-2Bq/cm<sup>3</sup>)

Please note that these nuclides are sometimes detected even when they are below the limits, contingent on the detector or samples.

## Result of nuclide analysis of sub drain

(Data summarized on January 7)

Place of Sampling	Fukushima Daiichi NPS 2U sub-drain	Fukushima Daiichi NPS 5U sub-drain	Fukushima Daiichi NPS 3U sub-drain
Date of sampling	2011/12/12	2011/12/12	2011/12/12
Detected Nuclides (Half-life)	density of sample ( Bq/cm <sup>3</sup> )		
I-131 (about 8 days)	ND	ND	ND
Cs-134 (about 2 years)	3.4E-01	ND	ND
Cs-137 (about 30 years)	4.4E-01	ND	ND
H-3 (about 12 years)	1.1E+00	1.4E-01	1.2E-01
all of $\alpha$	ND	ND	ND
all of $\beta$	1.1E+00	ND	4.5E-02
Sr-89 (about 51 days)	2.1E-02	ND	ND
Sr-90 (about 29 years)	1.4E-01	5.4E-05	1.6E-04

\* O.OE ± O has same meaning as O.O × 10 ± O.

\* We announced the result of I-131, Cs-134 and Cs-137 on December 13, 2011.

\* "ND" means the sampled data is below measurable limit. The followings show the detection limits.

I-131: approx. 2E-2Bq/cm<sup>3</sup>, Cs-134: approx. 2E-2Bq/cm<sup>3</sup>, Cs-137: approx. 3E-2Bq/cm<sup>3</sup>,

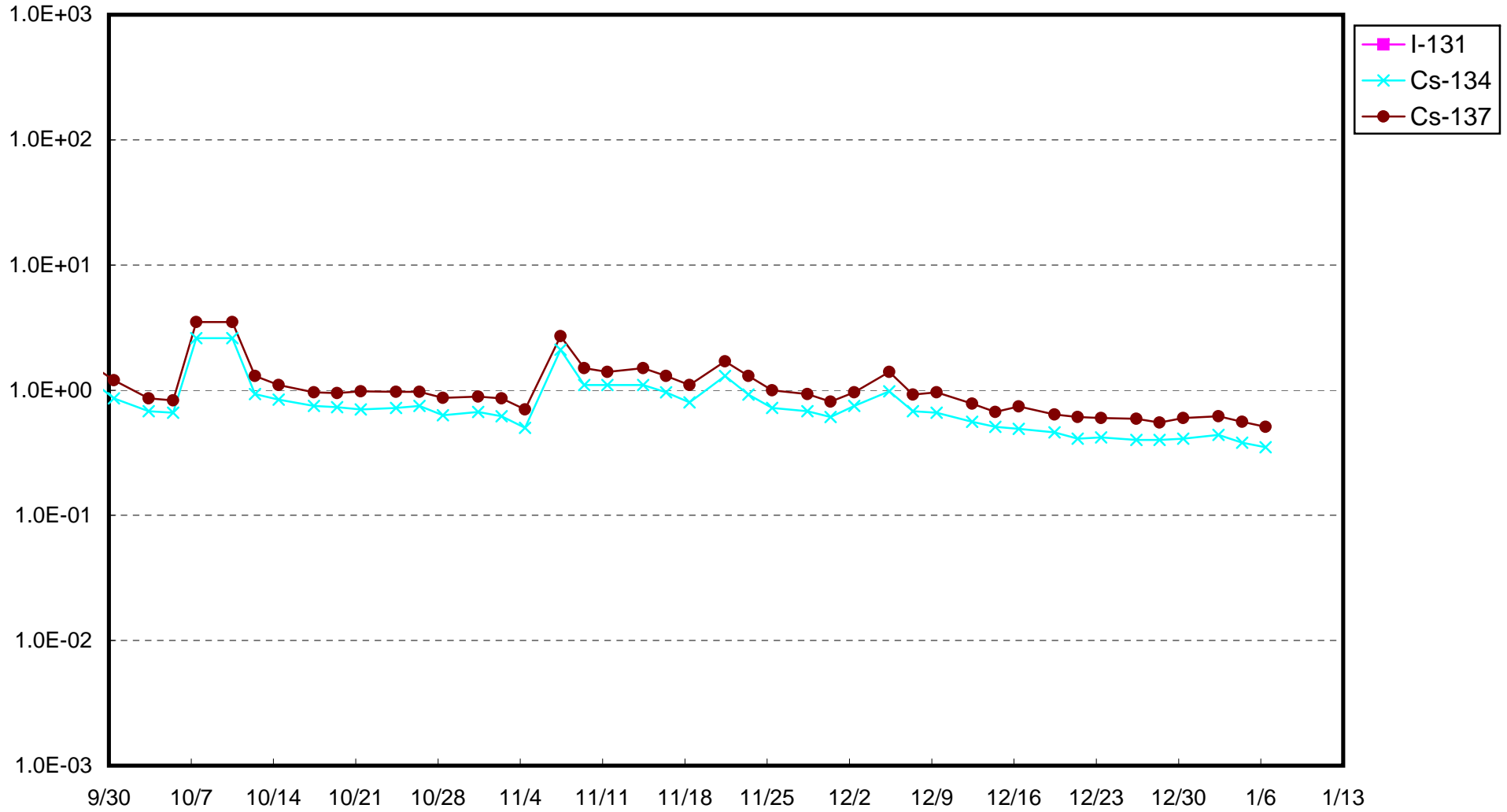
all of  $\alpha$ : approx 3E-3Bq/cm<sup>3</sup>, all of  $\beta$ : approx 2E-2Bq/cm<sup>3</sup>, Sr-89: approx 1E-4Bq/cm<sup>3</sup>

Please note that these nuclides are sometimes detected even when they are below the limits, contingent on the detector or samples.

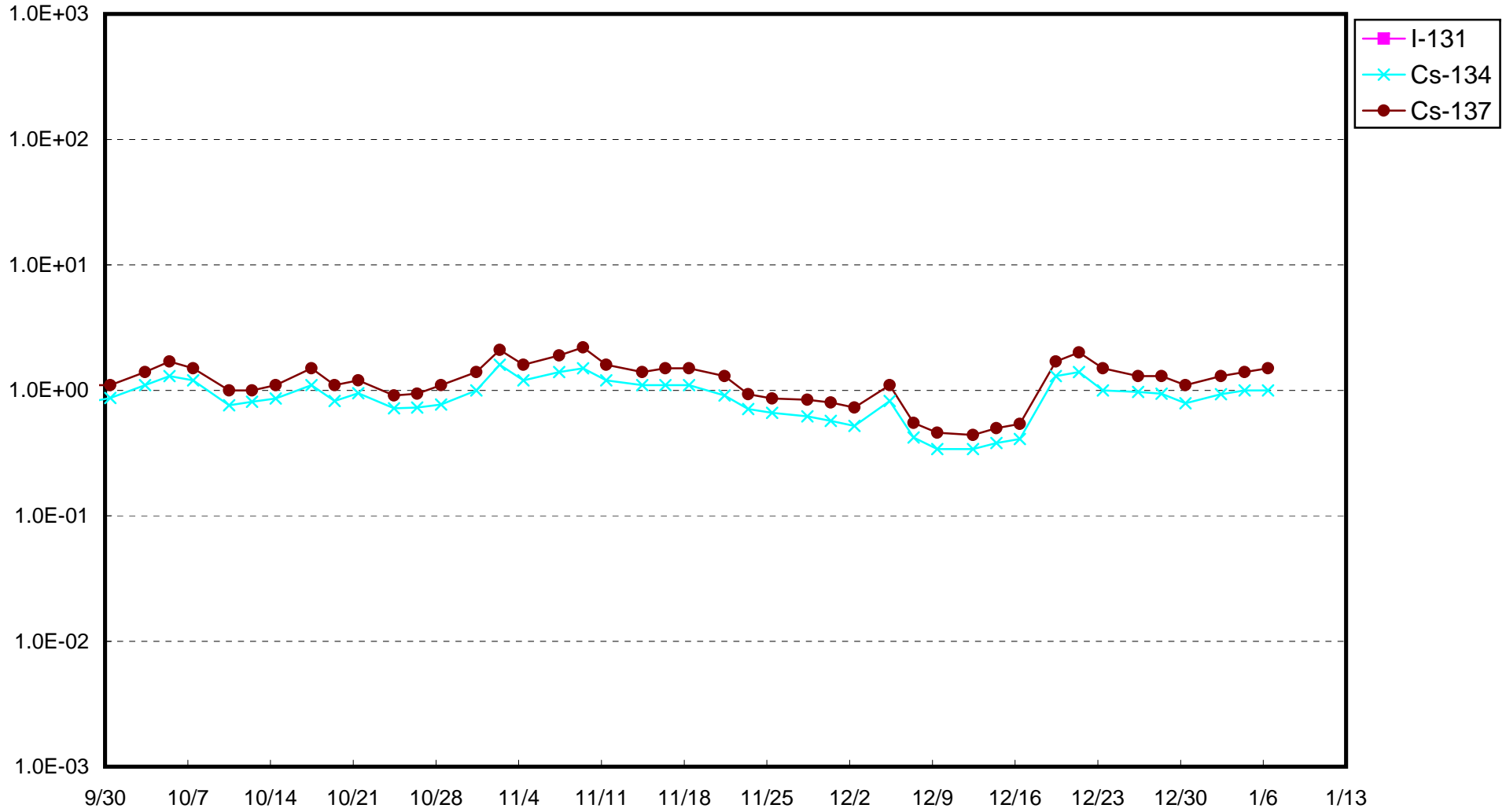
(Evaluation)

Radioactivity of H-3, all of  $\beta$ , Sr-89, Sr-90 are detected, and it was thought with the influence by this accident.

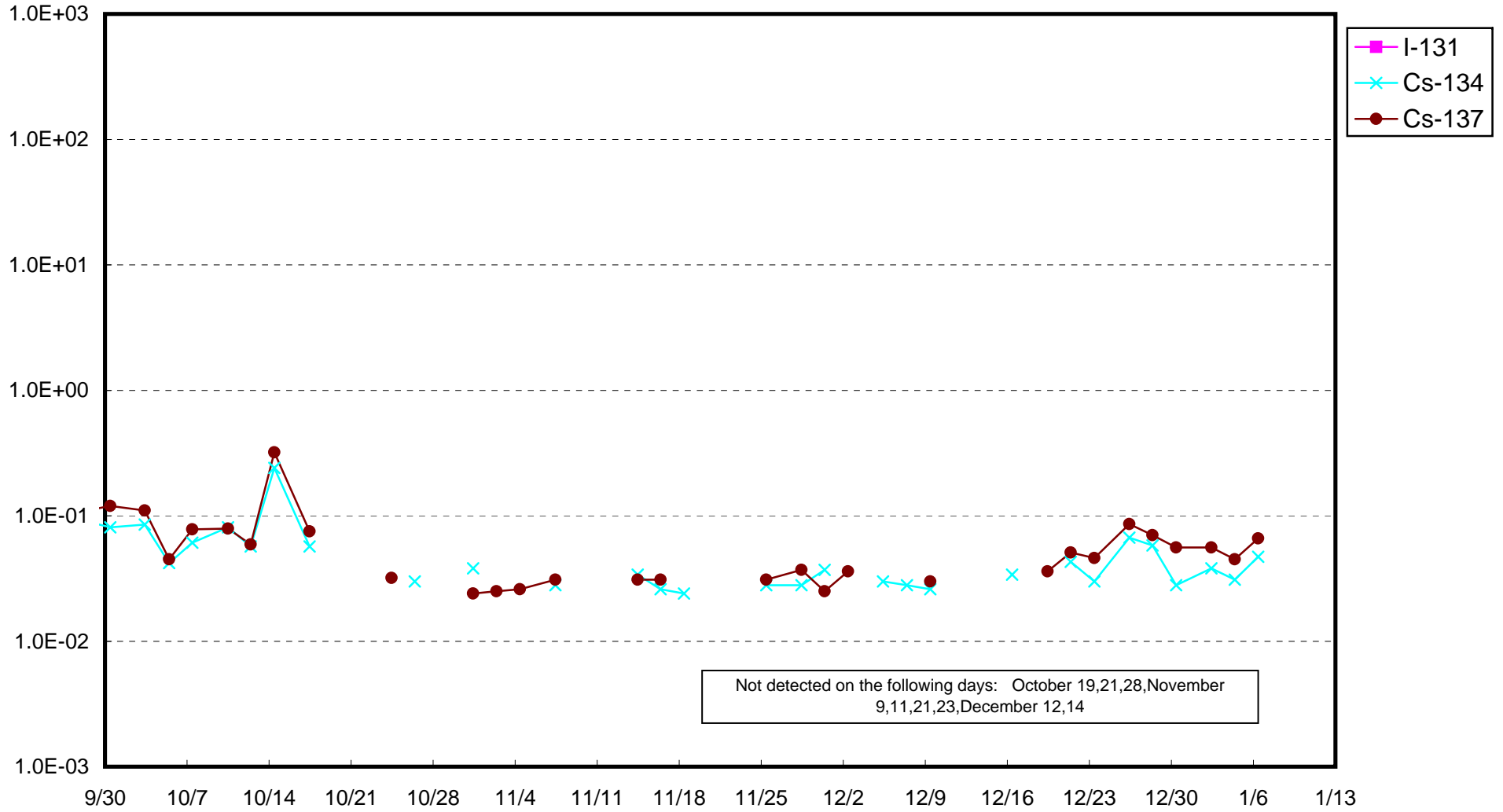
Fukushima Daiichi Nuclear Power Station : Radioactivity Density of Sub-drain at Unit 1 (Bq/cm<sup>3</sup>)



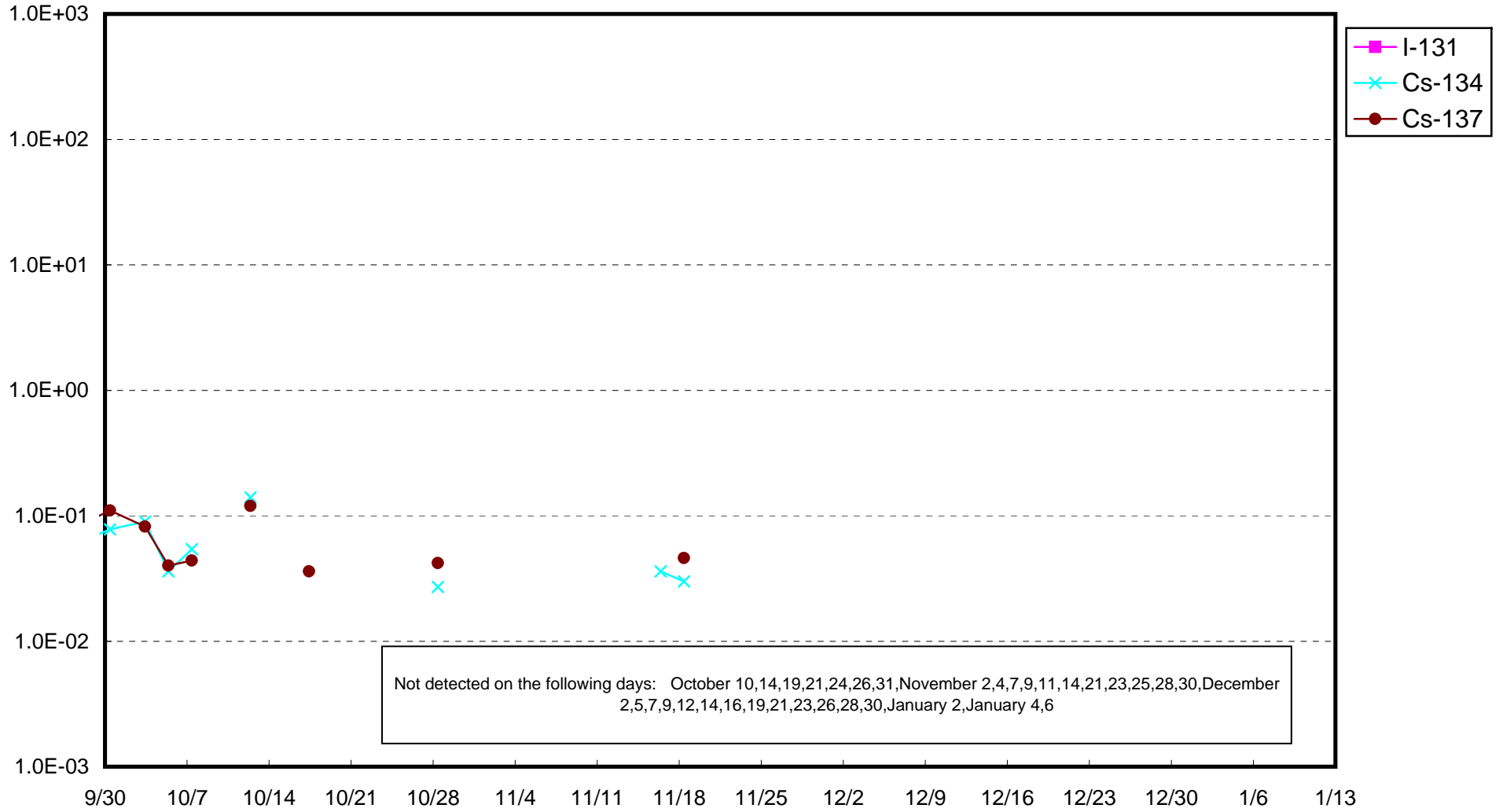
Fukushima Daiichi Nuclear Power Station : Radioactivity Density of Sub-drain at Unit 2 (Bq/cm<sup>3</sup>)



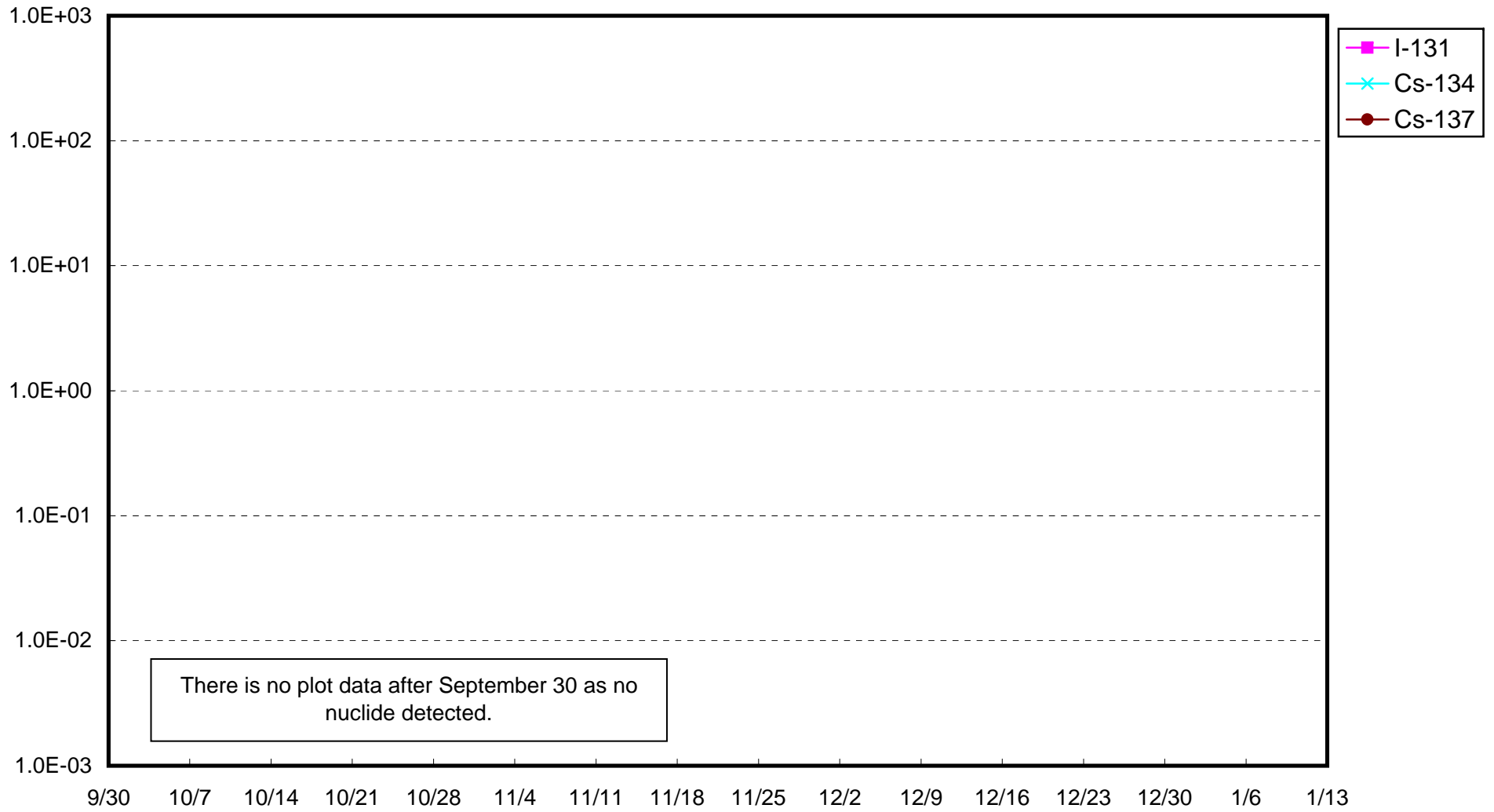
Fukushima Daiichi Nuclear Power Station : Radioactivity Density of Sub-drain at Unit 3 (Bq/cm<sup>3</sup>)



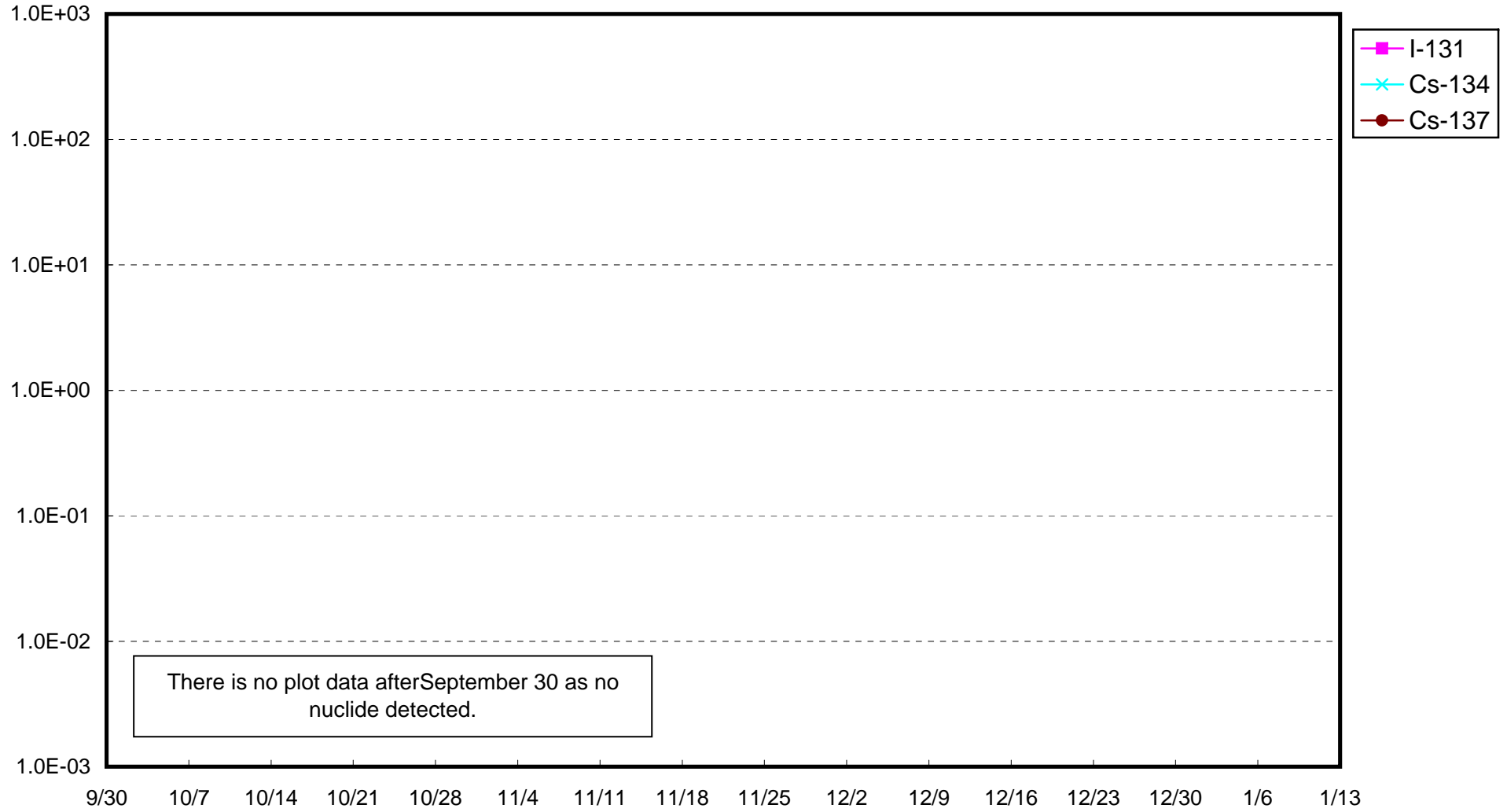
Fukushima Daiichi Nuclear Power Station : Radioactivity Density of Sub-drain at Unit 4 (Bq/cm<sup>3</sup>)



Fukushima Daiichi Nuclear Power Station : Radioactivity Density of Sub-drain at Unit 5 (Bq/cm<sup>3</sup>)



Fukushima Daiichi Nuclear Power Station : Radioactivity Density of Sub-drain at Unit 6 (Bq/cm<sup>3</sup>)





Fukushima Daiichi Nuclear Power Station : Radioactivity Density at the Deep Well at the Site (Bq/cm<sup>3</sup>)

