

Result of nuclide analysis of sub drain of Fukushima Daiichi NPS

Reference

(Data summarized on December 31)

Place of Sampling	Fukushima Daiichi NPS 1U sub-drain	Fukushima Daiichi NPS 2U sub-drain	Fukushima Daiichi NPS 3U sub-drain	Fukushima Daiichi NPS 4U sub-drain	Fukushima Daiichi NPS 5U sub-drain	Fukushima Daiichi NPS 6U sub-drain	Fukushima Daiichi NPS Deep well
Time of Sampling	December 30, 2011 9:40 AM	December 30, 2011 9:50 AM	December 30, 2011 9:55 AM	December 30, 2011 9:17 AM	December 30, 2011 9:30 AM	December 30, 2011 9:25 AM	December 30, 2011 9:05 AM
Detected Nuclides (Half-life)	Density of sample (Bq/cm3)						
I-131 (about 8 days)	ND	ND	ND	ND	ND	ND	ND
Cs-134 (about 2 years)	4.1E-01	7.9E-01	2.8E-02	ND	ND	ND	ND
Cs-137 (about 30 years)	6.0E-01	1.1E+00	5.6E-02	ND	ND	ND	ND

* O.OE - O means $O.O \times 10^{-O}$

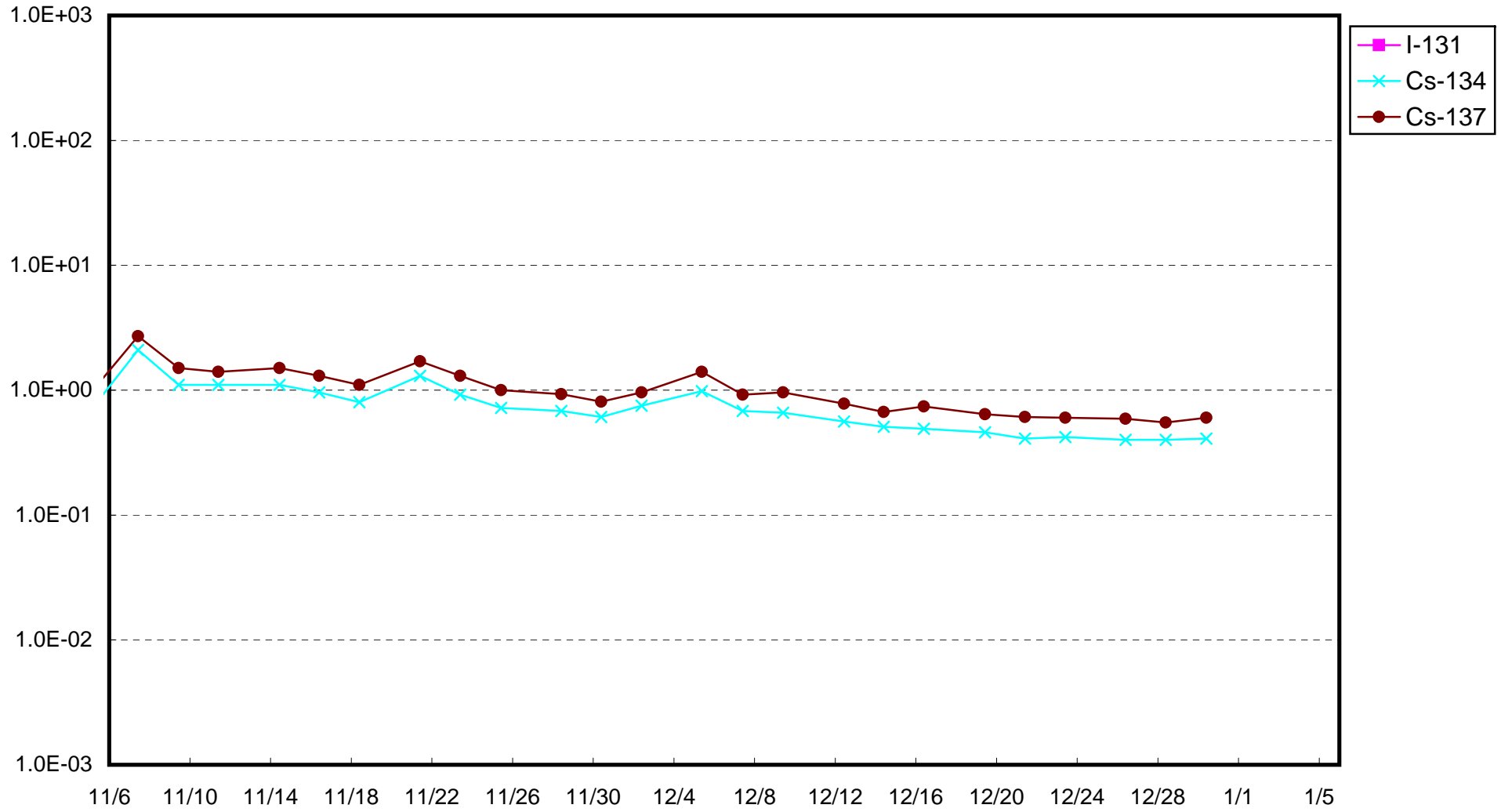
* Data of other nuclides are under evaluation.

* "ND" means the sampled data is below measurable limit.

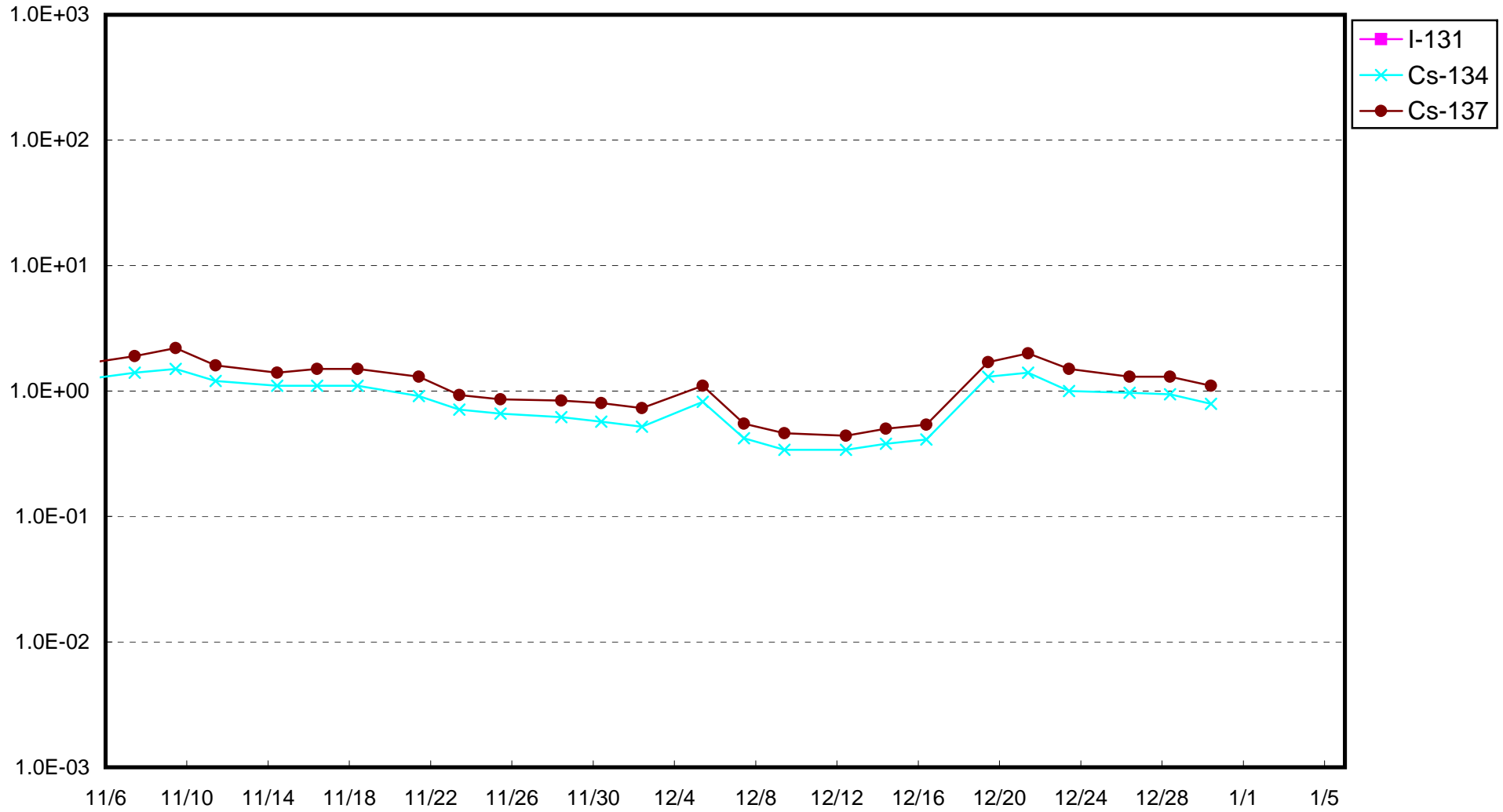
I-131: approx. $3E-2Bq/cm^3$, Cs-134: approx. $2E-2Bq/cm^3$, Cs-137: approx. $3E-2Bq/cm^3$)

Please note that these nuclides are sometimes detected even when they are below the limits, contingent on the detector or samples.

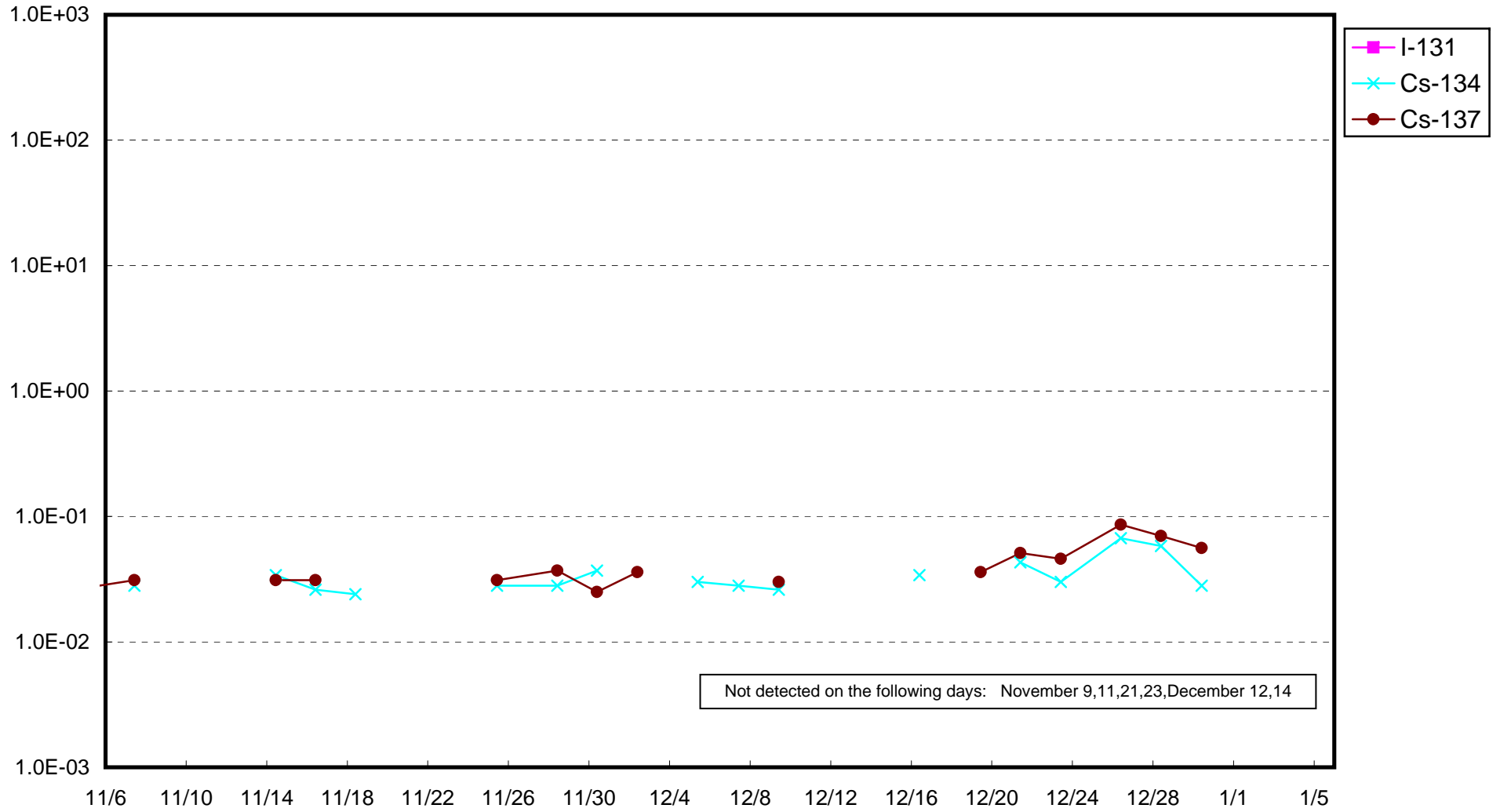
Fukushima Daiichi Nuclear Power Station : Radioactivity Density of Sub-drain at Unit 1 (Bq/cm³)



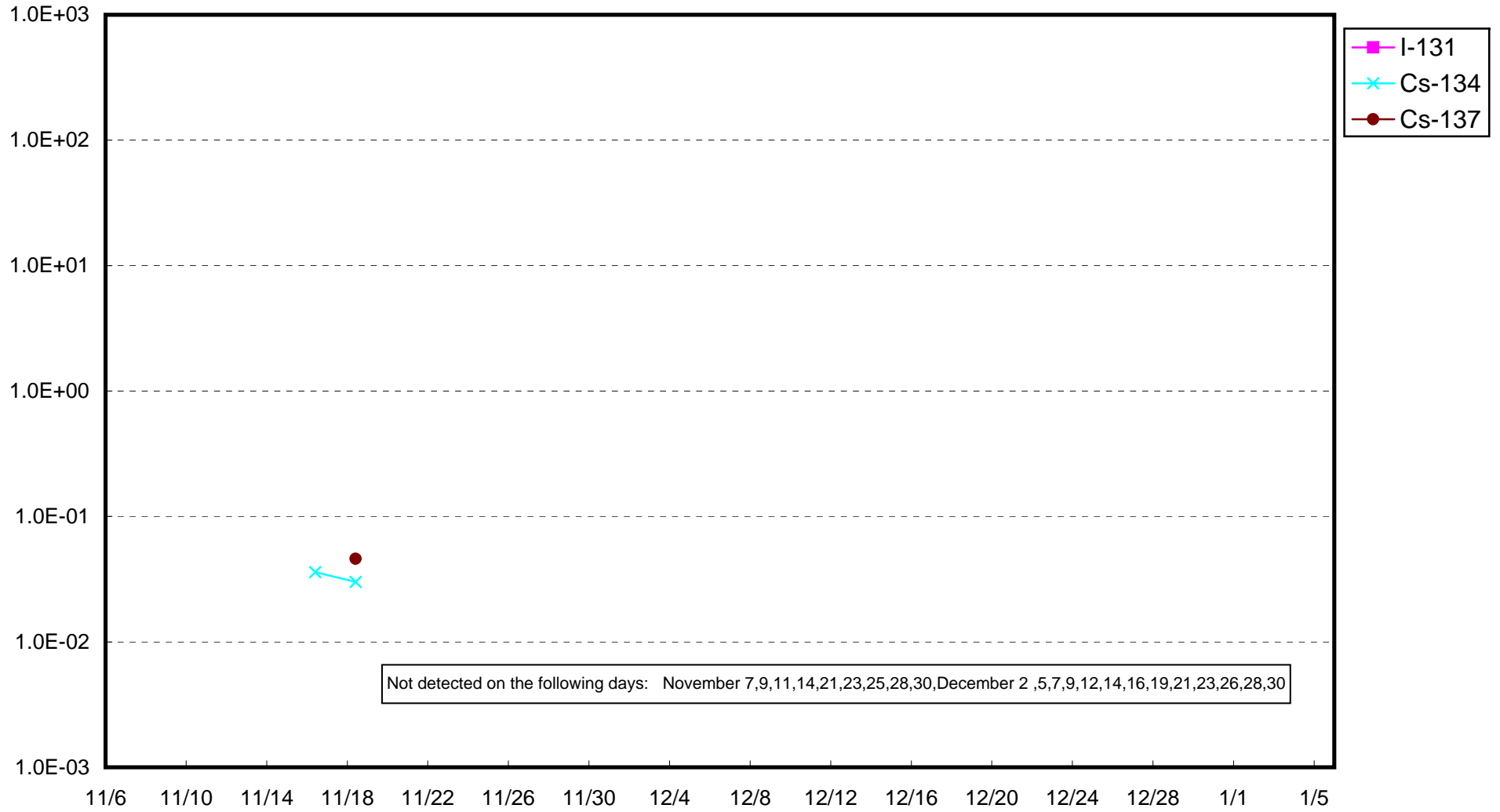
Fukushima Daiichi Nuclear Power Station : Radioactivity Density of Sub-drain at Unit 2 (Bq/cm³)



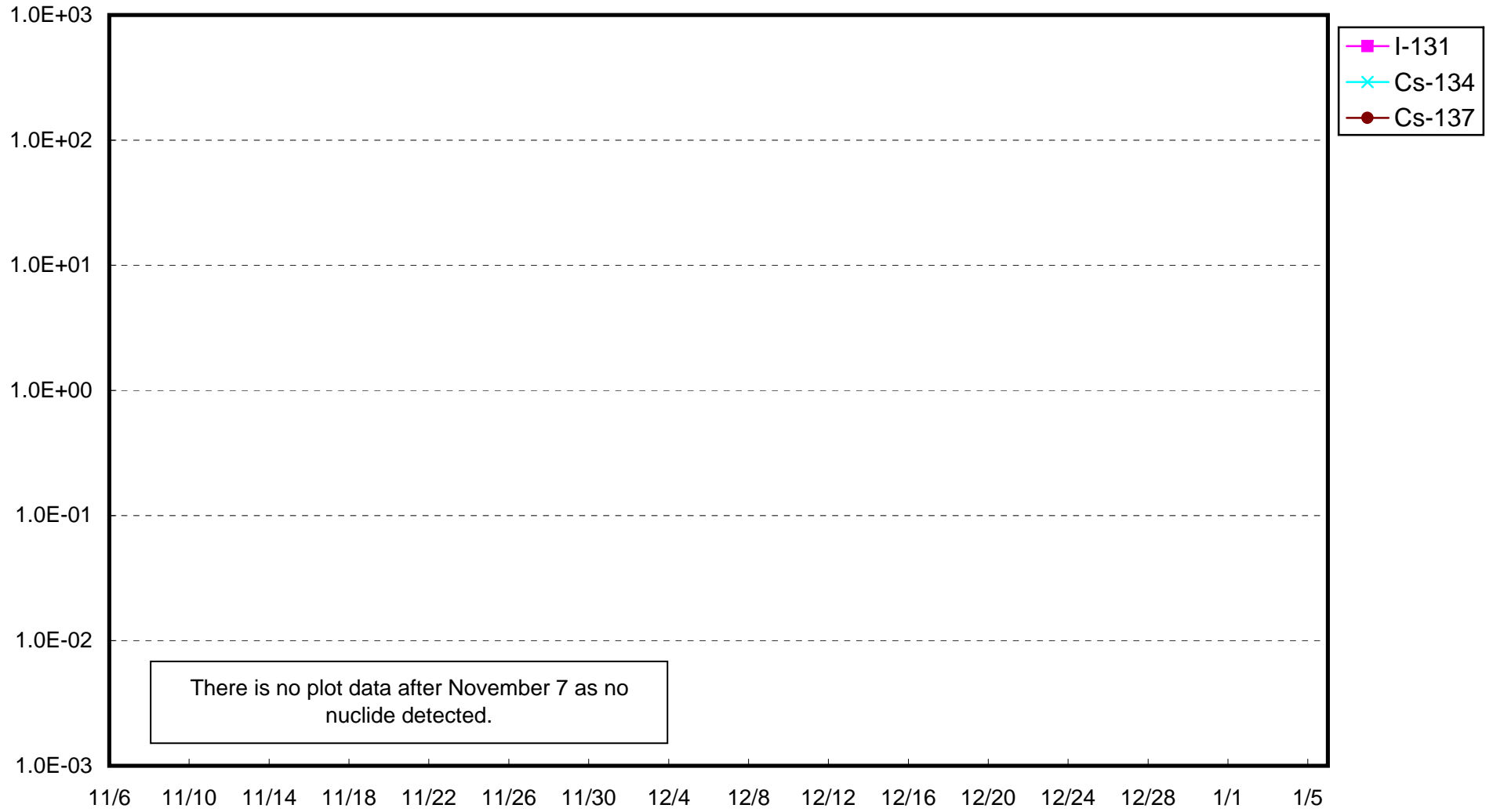
Fukushima Daiichi Nuclear Power Station : Radioactivity Density of Sub-drain at Unit 3 (Bq/cm³)



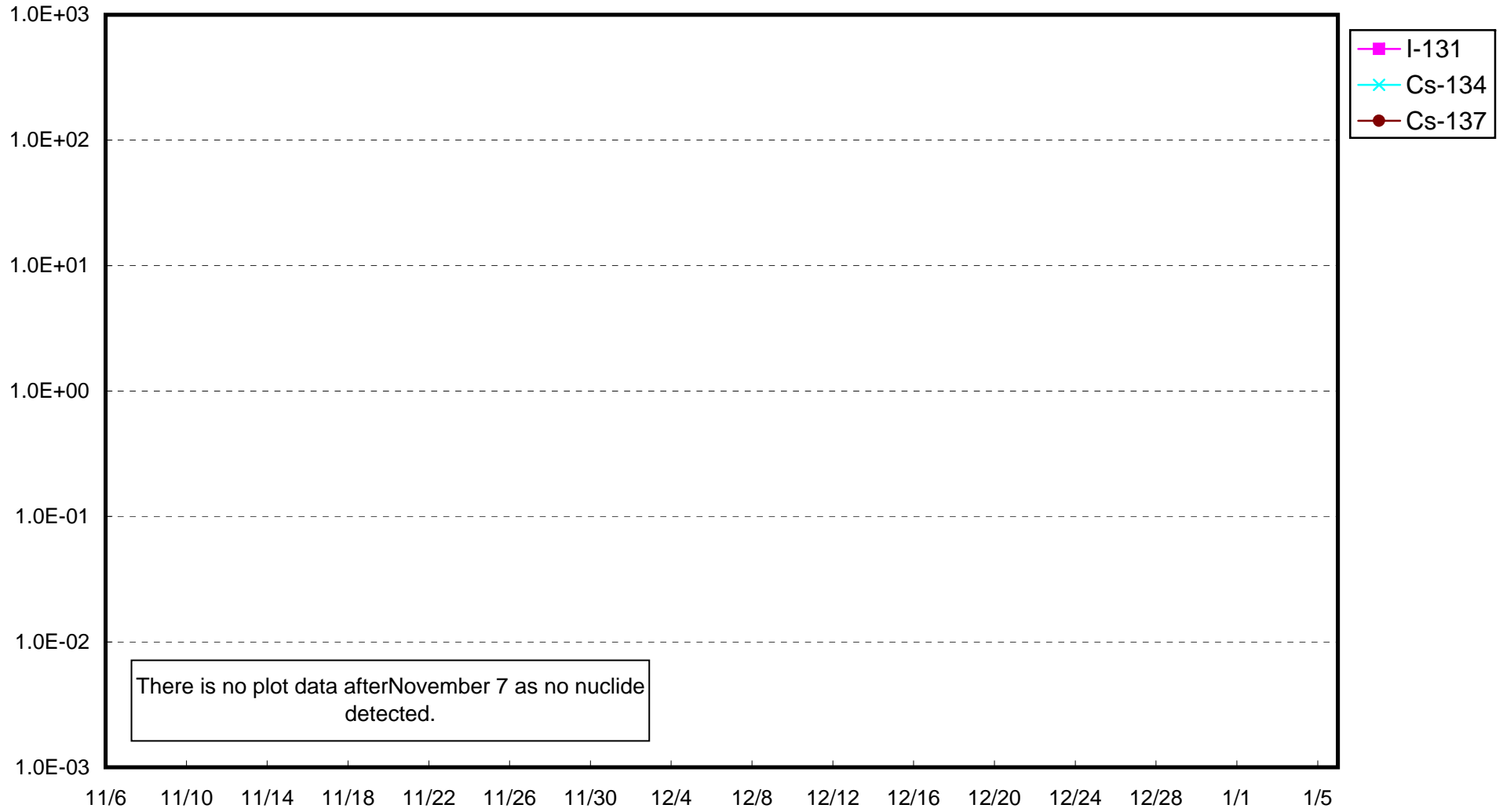
Fukushima Daiichi Nuclear Power Station : Radioactivity Density of Sub-drain at Unit 4 (Bq/cm³)



Fukushima Daiichi Nuclear Power Station : Radioactivity Density of Sub-drain at Unit 5 (Bq/cm³)



Fukushima Daiichi Nuclear Power Station : Radioactivity Density of Sub-drain at Unit 6 (Bq/cm³)



Fukushima Daiichi Nuclear Power Station : Radioactivity Density at the Deep Well at the Site (Bq/cm³)

