

Result of nuclide analysis of sub drain of Fukushima Daiichi NPS

Reference

(Data summarized on December 29)

Place of Sampling	Fukushima Daiichi NPS 1U sub-drain	Fukushima Daiichi NPS 2U sub-drain	Fukushima Daiichi NPS 3U sub-drain	Fukushima Daiichi NPS 4U sub-drain	Fukushima Daiichi NPS 5U sub-drain	Fukushima Daiichi NPS 6U sub-drain	Fukushima Daiichi NPS Deep well
Time of Sampling	December 28, 2011 9:20 AM	December 28, 2011 9:25 AM	December 28, 2011 9:30 AM	December 28, 2011 9:19 AM	December 28, 2011 9:10 AM	December 28, 2011 9:40 AM	December 28, 2011 8:50 AM
Detected Nuclides (Half-life)	Density of sample ( Bq/cm <sup>3</sup> )						
I-131 (about 8 days)	ND	ND	ND	ND	ND	ND	ND
Cs-134 (about 2 years)	4.0E-01	9.4E-01	5.8E-02	ND	ND	ND	ND
Cs-137 (about 30 years)	5.5E-01	1.3E+00	7.0E-02	ND	ND	ND	ND

\* O.OE - O means O.O x 10-O

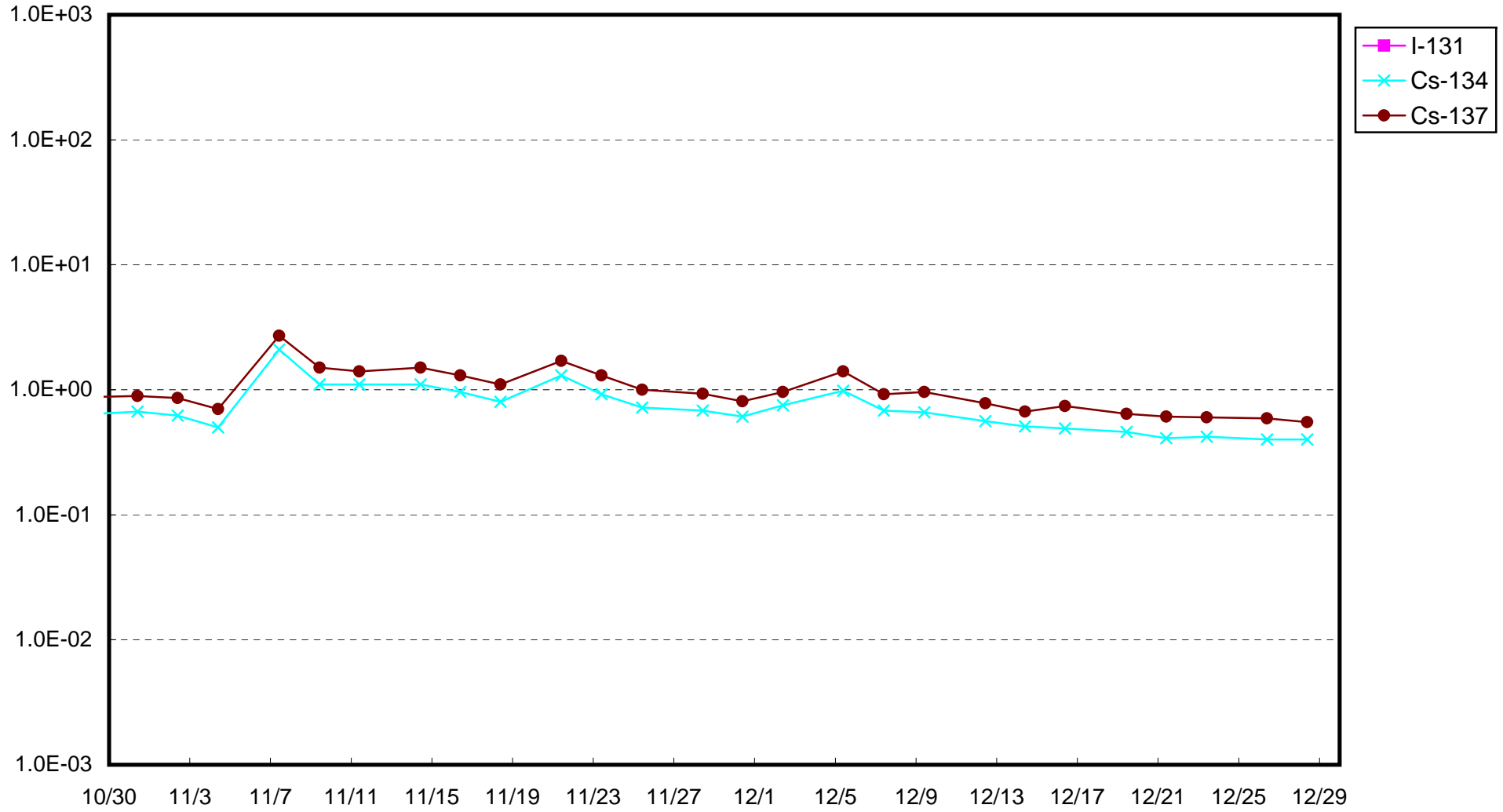
\* Data of other nuclides are under evaluation.

\* "ND" means the sampled data is below measurable limit.

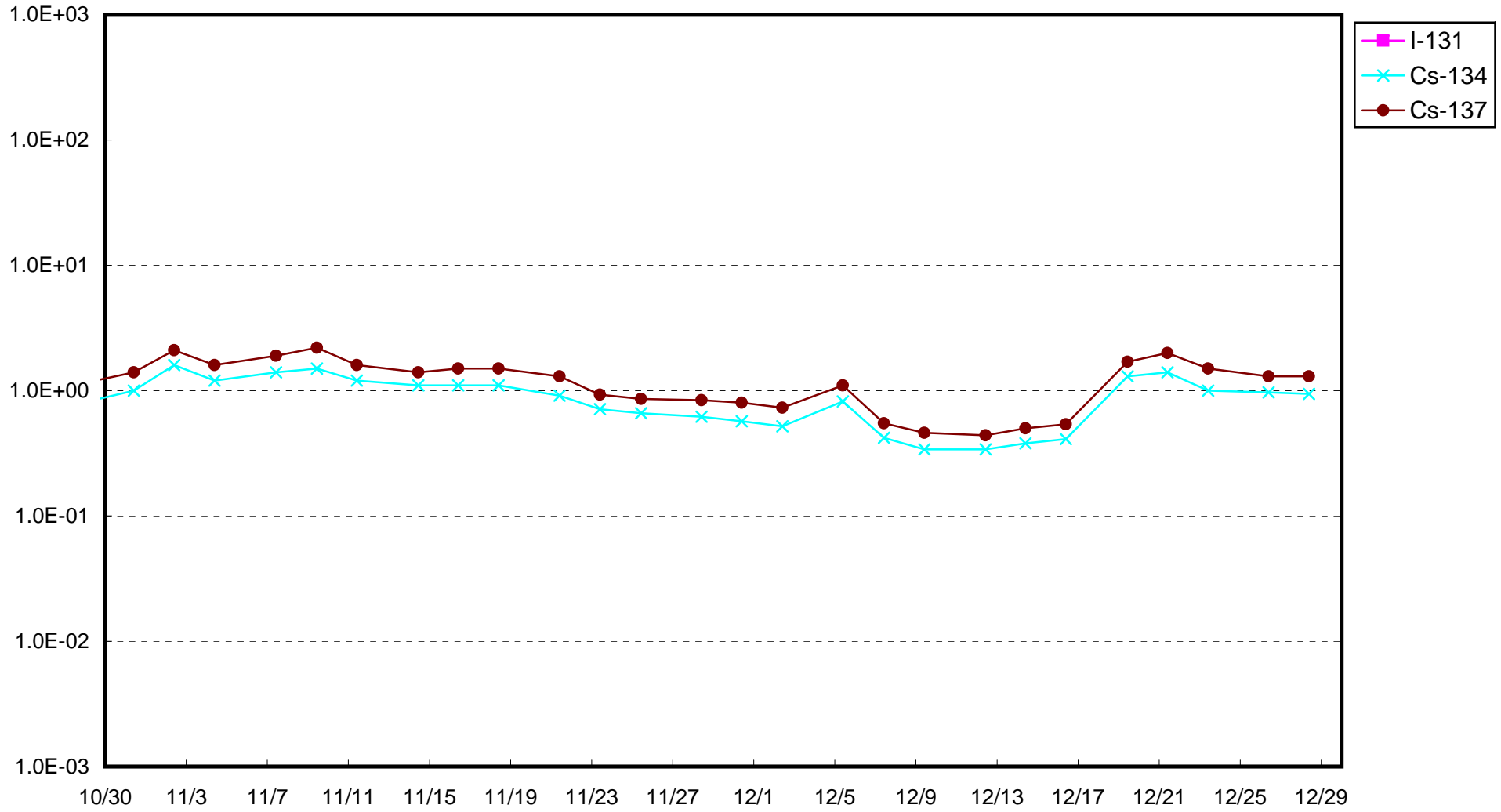
( I-131: approx. 2E-2Bq/cm<sup>3</sup>, Cs-134: approx. 2E-2Bq/cm<sup>3</sup>, Cs-137: approx. 3E-2Bq/cm<sup>3</sup> )

Please note that these nuclides are sometimes detected even when they are below the limits, contingent on the detector or samples.

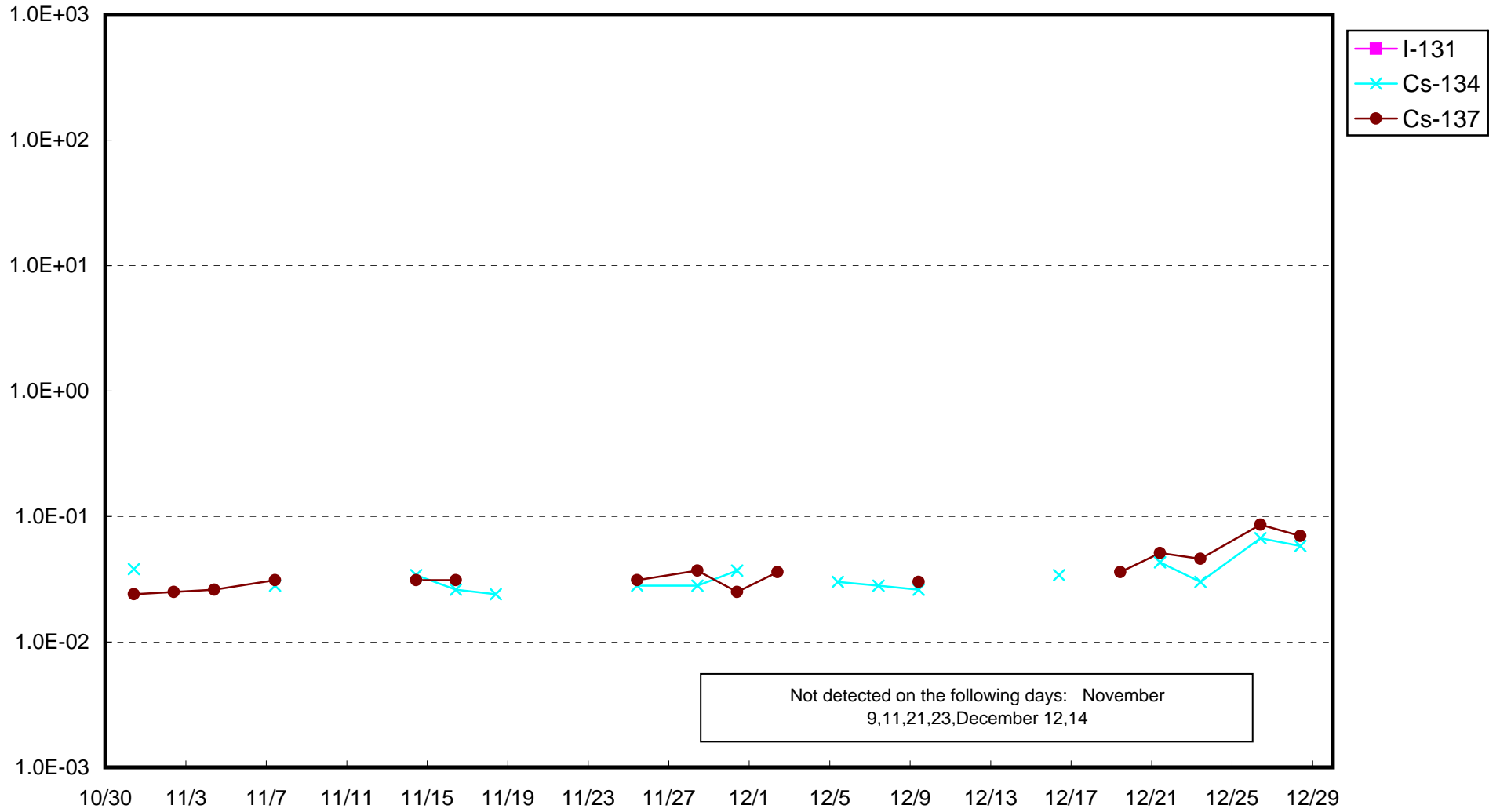
Fukushima Daiichi Nuclear Power Station : Radioactivity Density of Sub-drain at Unit 1 (Bq/cm<sup>3</sup>)



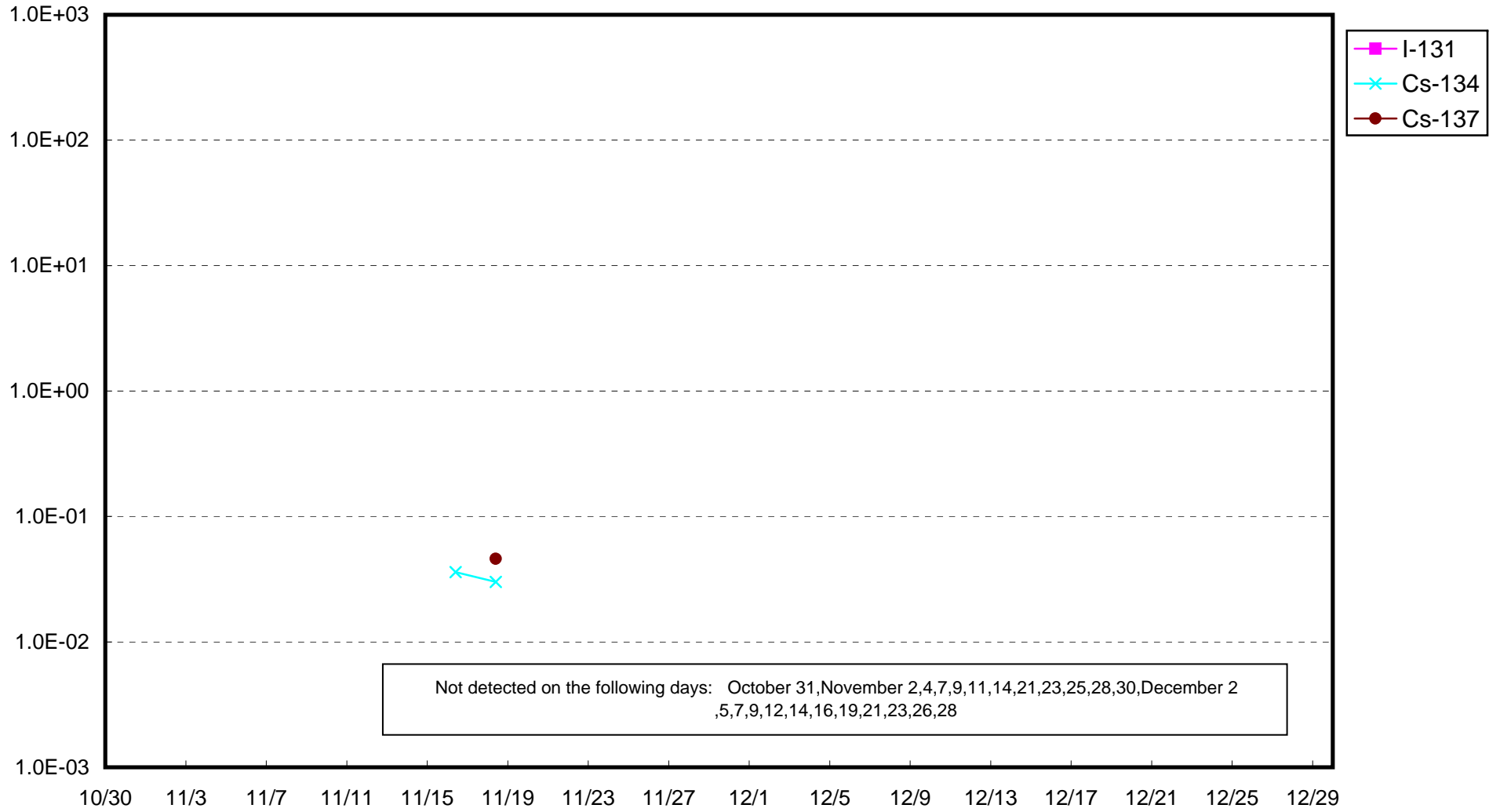
Fukushima Daiichi Nuclear Power Station : Radioactivity Density of Sub-drain at Unit 2 (Bq/cm<sup>3</sup>)



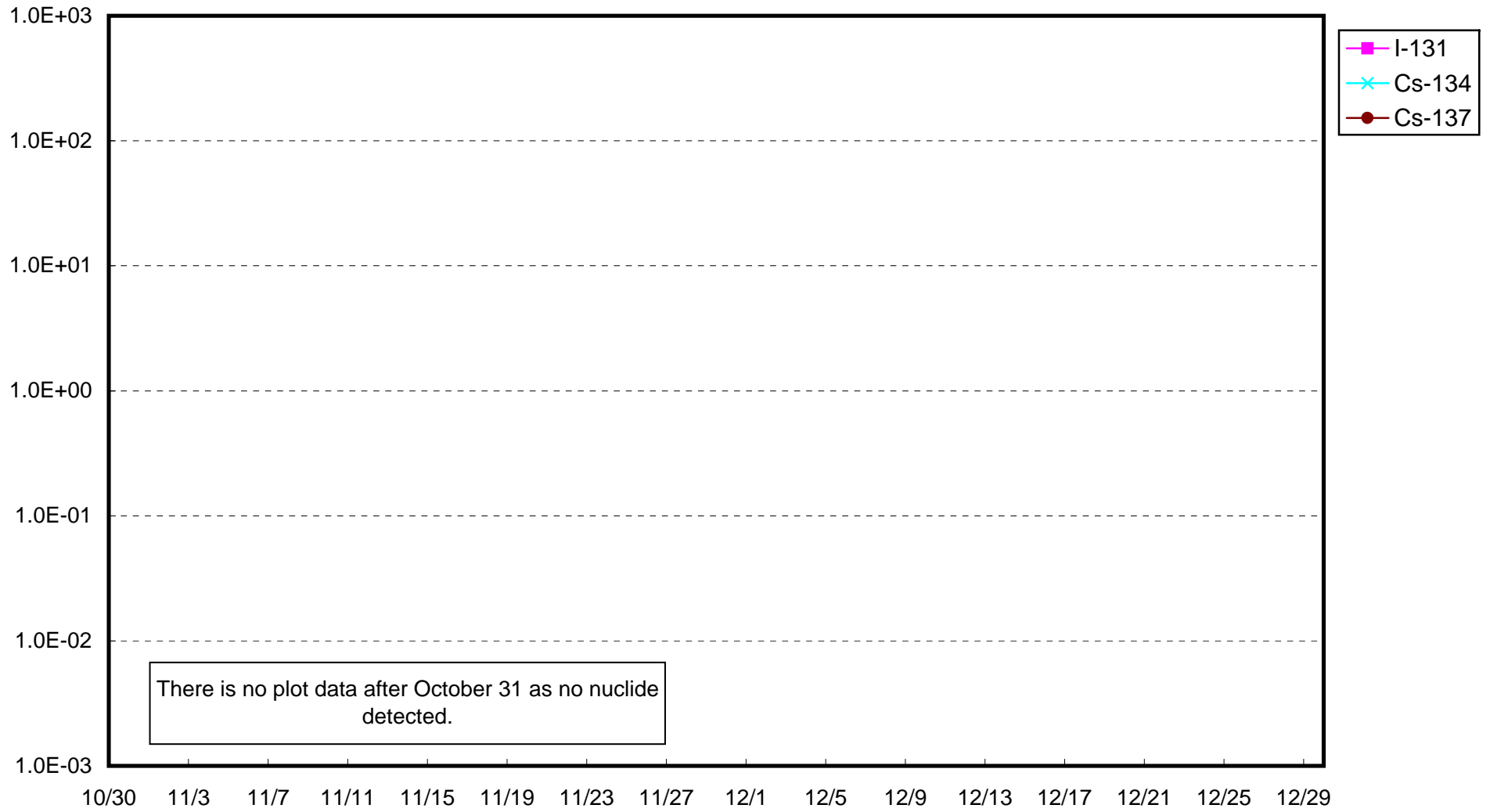
Fukushima Daiichi Nuclear Power Station : Radioactivity Density of Sub-drain at Unit 3 (Bq/cm<sup>3</sup>)



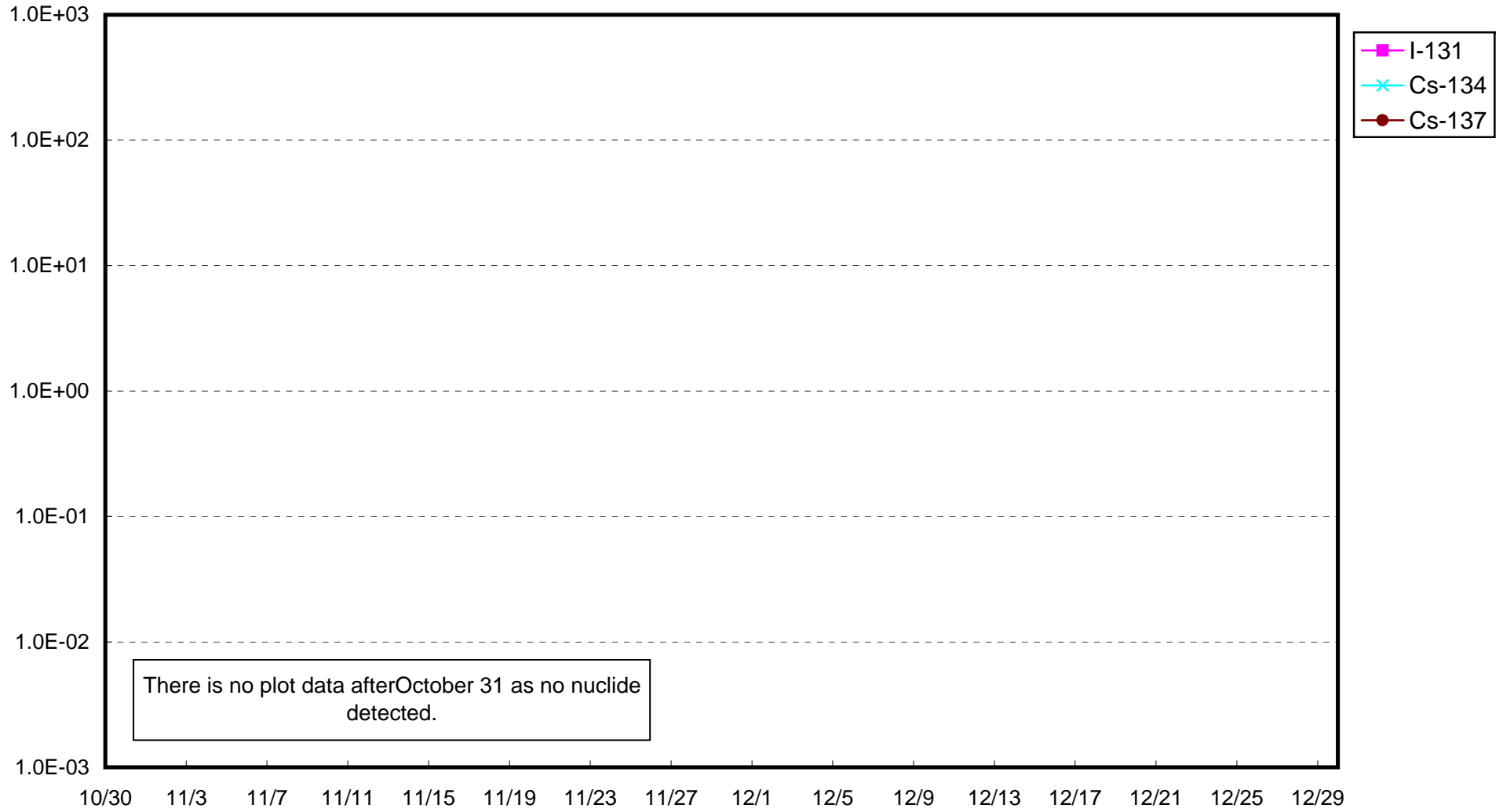
Fukushima Daiichi Nuclear Power Station : Radioactivity Density of Sub-drain at Unit 4 (Bq/cm<sup>3</sup>)



Fukushima Daiichi Nuclear Power Station : Radioactivity Density of Sub-drain at Unit 5 (Bq/cm<sup>3</sup>)



Fukushima Daiichi Nuclear Power Station : Radioactivity Density of Sub-drain at Unit 6 (Bq/cm<sup>3</sup>)



Fukushima Daiichi Nuclear Power Station : Radioactivity Density at the Deep Well at the Site (Bq/cm<sup>3</sup>)

