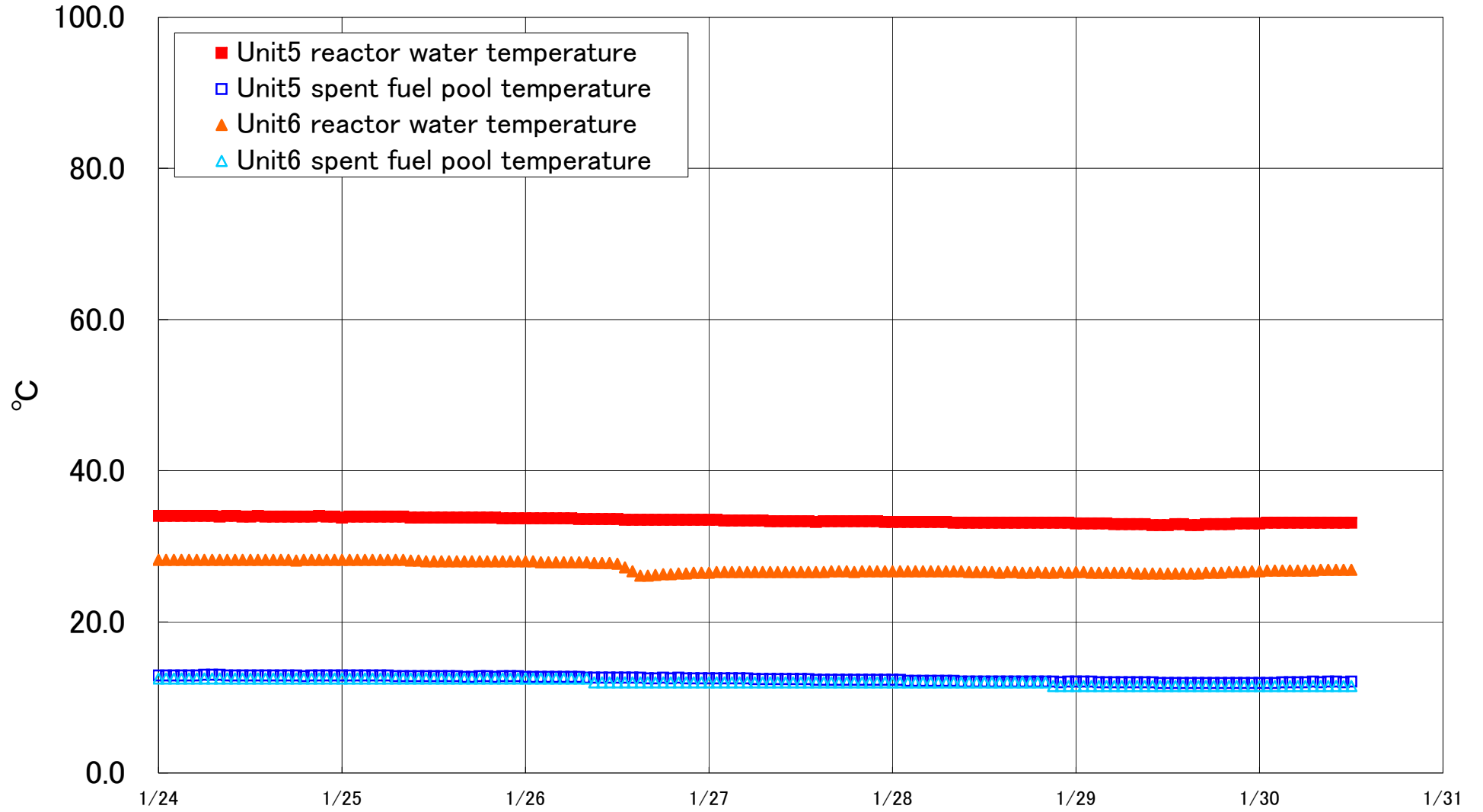


Fukushima Daiichi Nuclear Power Station Units 5·6 Reactor water /spent fuel pool temperature



Fukushima Daiichi Nuclear Power Station Unit5·6 Reactor water/spent fuel pool temperature

Date	Unit5 reactor water temperature	Unit5 spent fuel pool temperature	Unit6 reactor water temperature	Unit6 spent fuel pool temperature
1/27 20:00	33.3	12.3	26.7	12.0
1/27 21:00	33.3	12.3	26.7	12.0
1/27 22:00	33.3	12.3	26.7	12.0
1/27 23:00	33.2	12.3	26.7	12.0
1/28 0:00	33.2	12.3	26.7	12.0
1/28 1:00	33.2	12.3	26.7	12.0
1/28 2:00	33.2	12.2	26.7	12.0
1/28 3:00	33.2	12.2	26.7	12.0
1/28 4:00	33.2	12.2	26.7	12.0
1/28 5:00	33.2	12.2	26.7	12.0
1/28 6:00	33.2	12.2	26.7	12.0
1/28 7:00	33.2	12.2	26.7	12.0
1/28 8:00	33.1	12.2	26.7	12.0
1/28 9:00	33.1	12.1	26.7	12.0
1/28 10:00	33.1	12.1	26.6	12.0
1/28 11:00	33.1	12.1	26.6	12.0
1/28 12:00	33.1	12.1	26.6	12.0
1/28 13:00	33.1	12.1	26.6	12.0
1/28 14:00	33.1	12.1	26.5	12.0
1/28 15:00	33.1	12.1	26.6	12.0
1/28 16:00	33.1	12.1	26.6	12.0
1/28 17:00	33.1	12.1	26.5	12.0
1/28 18:00	33.1	12.1	26.5	12.0
1/28 19:00	33.1	12.1	26.6	12.0
1/28 20:00	33.1	12.1	26.5	12.0
1/28 21:00	33.1	12.1	26.5	11.5
1/28 22:00	33.1	12.0	26.6	11.5
1/28 23:00	33.1	12.1	26.5	11.5
1/29 0:00	33.0	12.1	26.6	11.5
1/29 1:00	33.0	12.1	26.6	11.5
1/29 2:00	33.0	12.1	26.5	11.5
1/29 3:00	33.0	12.0	26.5	11.5
1/29 4:00	33.0	12.0	26.5	11.5
1/29 5:00	32.9	12.0	26.5	11.5
1/29 6:00	32.9	12.0	26.5	11.5
1/29 7:00	32.9	12.0	26.5	11.5
1/29 8:00	32.9	12.0	26.4	11.5
1/29 9:00	32.9	12.0	26.4	11.5
1/29 10:00	32.8	12.0	26.4	11.5
1/29 11:00	32.8	11.9	26.4	11.5
1/29 12:00	32.8	11.9	26.4	11.5
1/29 13:00	32.9	11.9	26.4	11.5
1/29 14:00	32.9	11.9	26.4	11.5
1/29 15:00	32.8	11.9	26.4	11.5
1/29 16:00	32.8	11.9	26.4	11.5
1/29 17:00	32.9	11.9	26.5	11.5
1/29 18:00	32.9	11.9	26.5	11.5
1/29 19:00	32.9	11.9	26.5	11.5
1/29 20:00	32.9	11.9	26.6	11.5
1/29 21:00	33.0	11.9	26.6	11.5
1/29 22:00	33.0	11.9	26.6	11.5
1/29 23:00	33.0	11.9	26.7	11.5
1/30 0:00	33.0	11.9	26.7	11.5
1/30 1:00	33.1	11.9	26.8	11.5
1/30 2:00	33.1	11.9	26.8	11.5
1/30 3:00	33.1	12.0	26.8	11.5
1/30 4:00	33.1	12.0	26.8	11.5
1/30 5:00	33.1	12.0	26.8	11.5
1/30 6:00	33.1	12.0	26.8	11.5
1/30 7:00	33.1	12.1	26.8	11.5
1/30 8:00	33.1	12.0	26.9	11.5
1/30 9:00	33.1	12.1	26.9	11.5
1/30 10:00	33.1	12.1	26.9	11.5
1/30 11:00	33.1	12.0	26.9	11.5
1/30 12:00	33.1	12.1	26.9	11.5