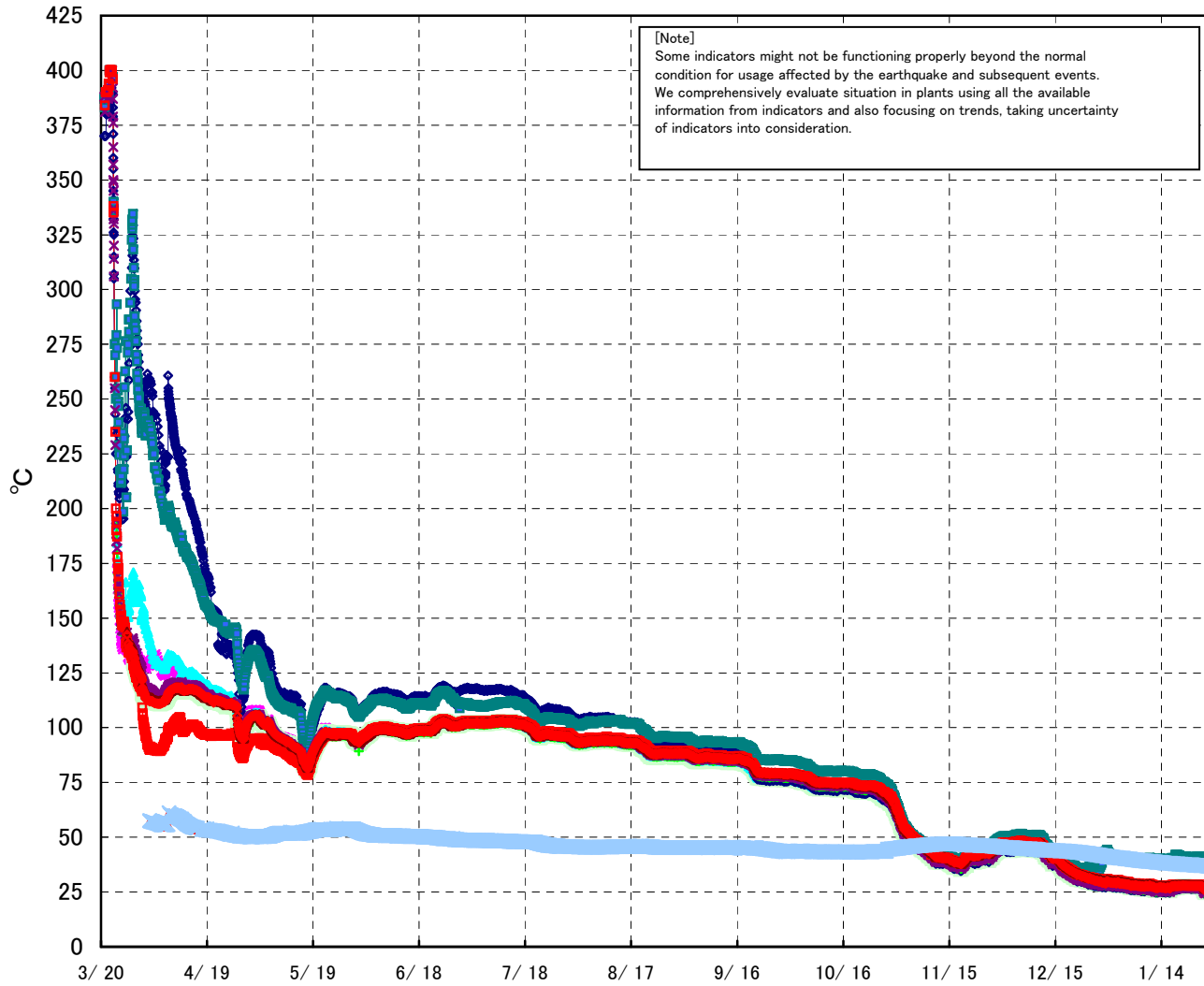
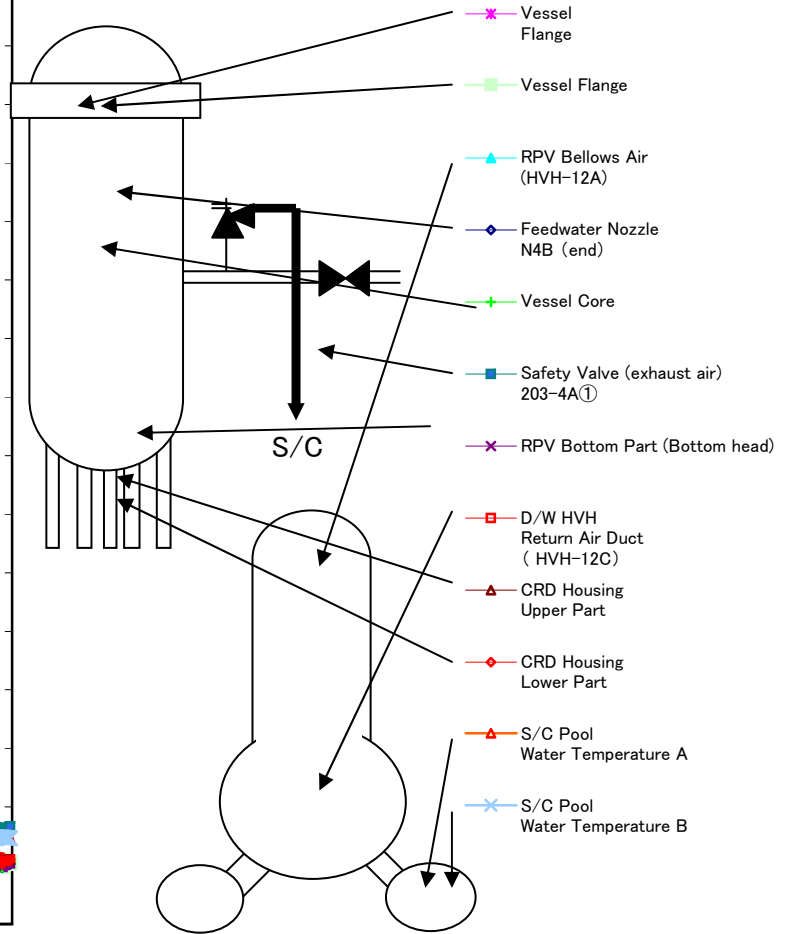


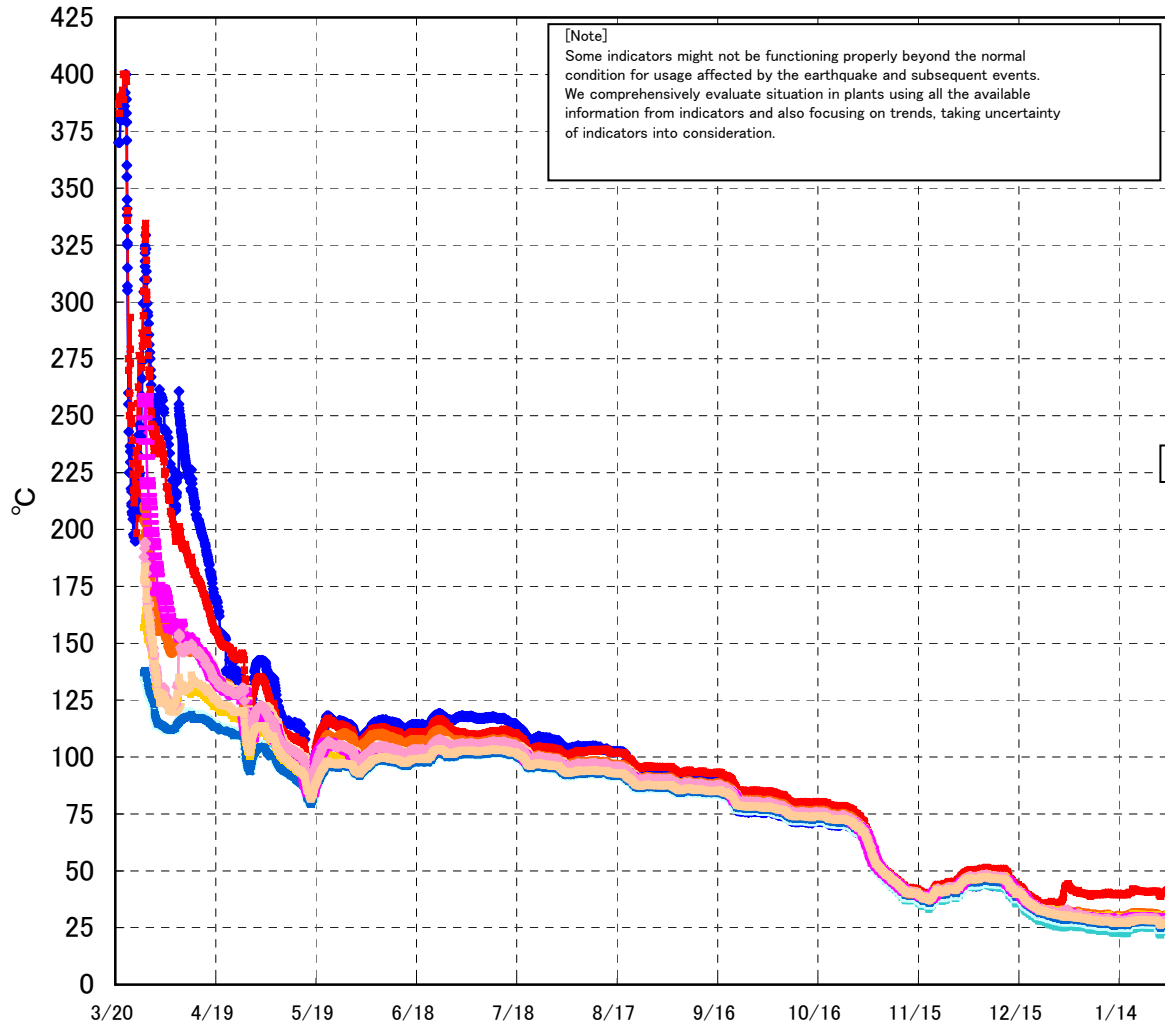
# Fukushima Daiichi Nuclear Power Station Unit 1 Parameters of Temperature (Typical Points)



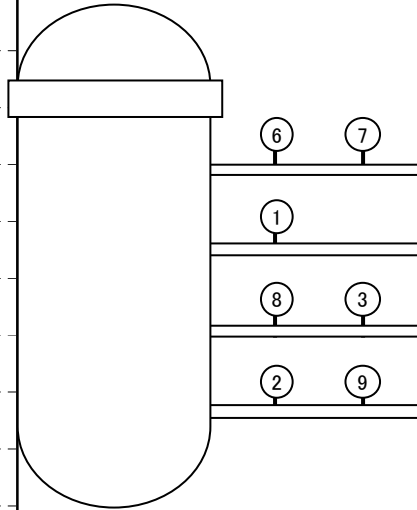
[Note]  
 Some indicators might not be functioning properly beyond the normal condition for usage affected by the earthquake and subsequent events. We comprehensively evaluate situation in plants using all the available information from indicators and also focusing on trends, taking uncertainty of indicators into consideration.



# Fukushima Daiichi Nuclear Power Station Unit 1 Parameters of Temperature (Feedwater Nozzle and Safety Valve (Exhaust Air))



Continuously measured temperatures of feedwater nozzle, N48, and safety valve (exhaust air), 203-4A, have been rising since March 27. In order to compare them with other similar points, some measurement points have been added since 12:30 of March 28.



- ◆ Feedwater Nozzle N4B (end)
- Feedwater Nozzle N4B (inside)
- ◆ Feedwater Nozzle N4C (end)
- Feedwater Nozzle N4C (inside)

- Safety Valve (exhaust air) 203-4A①
- Safety Valve (exhaust air) 203-4C②
- ◆ Safety Valve (exhaust air) 203-4B③
- exhaust air to D/W

- SR Valve (exhaust air) 203-3A⑥
- SR Valve (exhaust air) 203-3B⑦
- ◆ SR Valve (exhaust air) 203-3C⑧
- SR Valve (exhaust air) 203-3D⑨
- exhaust air to S/C

Fukushima Daiichi Nuclear Power Station Unit1 Parameters of Temperature

[Note]  
Some indicators might not be functioning properly beyond the normal condition for usage affected by the earthquake and subsequent events.  
We comprehensively evaluate situation in plants using all the available information from indicators and also focusing on trends, taking uncertainty

| Date       | Vessel Flange | Vessel Flange | Feedwater Nozzle N4B (end) | Feedwater Nozzle N4B (inside) | Feedwater Nozzle N4C (end) | Feedwater Nozzle N4C (inside) | Vessel Core | RPV Bottom Part (Bottom head) | CRD Housing Upper Part | CRD Housing Lower Part | Safety Valve (exhaust air) 203-4A(1) | Safety Valve (exhaust air) 203-4C(2) | Safety Valve (exhaust air) 203-4B(3) | SR Valve (exhaust air) 203-3A(6) | SR Valve (exhaust air) 203-3B(7) | SR Valve (exhaust air) 203-3C(8) | SR Valve (exhaust air) 203-3D(9) | D/W HVH Return Air Duct ( HVH-12C) | RPV Bellows Air (HVH-12A) | S/C Pool Water Temperature A | S/C Pool Water Temperature B | note |
|------------|---------------|---------------|----------------------------|-------------------------------|----------------------------|-------------------------------|-------------|-------------------------------|------------------------|------------------------|--------------------------------------|--------------------------------------|--------------------------------------|----------------------------------|----------------------------------|----------------------------------|----------------------------------|------------------------------------|---------------------------|------------------------------|------------------------------|------|
| 1/22 5:00  | 27.7          | 27.2          | 26.5                       | 24.9                          | 27.2                       | 27.3                          | 26.9        | 26.8                          | 28.2                   | 27.7                   | 40.8                                 | 30.9                                 | 30.7                                 | 28.4                             | 30.4                             | 29.1                             | 28.2                             | 28.4                               | 28.1                      | 37.4                         | 37.4                         |      |
| 1/22 11:00 | 27.6          | 27.2          | 26.4                       | 24.9                          | 27.1                       | 27.3                          | 26.8        | 26.8                          | 28.2                   | 27.7                   | 40.7                                 | 30.9                                 | 30.7                                 | 28.4                             | 30.3                             | 29.0                             | 28.2                             | 28.3                               | 28.1                      | 37.4                         | 37.4                         |      |
| 1/22 17:00 | 27.6          | 27.2          | 26.5                       | 24.9                          | 27.2                       | 27.3                          | 26.8        | 26.8                          | 28.2                   | 27.7                   | 40.8                                 | 30.9                                 | 30.7                                 | 28.3                             | 30.3                             | 29.0                             | 28.1                             | 28.3                               | 28.1                      | 37.4                         | 37.4                         |      |
| 1/22 23:00 | 27.6          | 27.2          | 26.5                       | 25.0                          | 27.1                       | 27.3                          | 26.8        | 26.8                          | 28.2                   | 27.7                   | 40.8                                 | 30.9                                 | 30.8                                 | 28.3                             | 30.3                             | 29.0                             | 28.1                             | 28.3                               | 28.1                      | 37.4                         | 37.3                         |      |
| 1/23 5:00  | 27.6          | 27.2          | 26.5                       | 24.9                          | 27.2                       | 27.3                          | 26.8        | 26.9                          | 28.2                   | 27.7                   | 40.8                                 | 30.9                                 | 30.7                                 | 28.3                             | 30.3                             | 29.0                             | 28.2                             | 28.3                               | 28.1                      | 37.3                         | 37.3                         |      |
| 1/23 11:00 | 27.6          | 27.3          | 26.5                       | 25.0                          | 27.1                       | 27.3                          | 26.8        | 26.8                          | 28.2                   | 27.7                   | 40.8                                 | 30.9                                 | 30.7                                 | 28.3                             | 30.3                             | 29.0                             | 28.1                             | 28.3                               | 28.1                      | 37.3                         | 37.2                         |      |
| 1/23 17:00 | 27.7          | 27.3          | 26.5                       | 25.0                          | 27.2                       | 27.3                          | 26.9        | 26.9                          | 28.2                   | 27.7                   | 40.9                                 | 30.9                                 | 30.8                                 | 28.3                             | 30.3                             | 29.0                             | 28.2                             | 28.3                               | 28.2                      | 37.3                         | 37.2                         |      |
| 1/23 23:00 | 27.7          | 27.3          | 26.5                       | 25.1                          | 27.2                       | 27.4                          | 26.9        | 26.9                          | 28.2                   | 27.7                   | 41.1                                 | 30.9                                 | 30.8                                 | 28.3                             | 30.4                             | 29.0                             | 28.2                             | 28.4                               | 28.0                      | 37.2                         | 37.2                         |      |
| 1/24 5:00  | 27.7          | 27.4          | 26.6                       | 25.1                          | 27.2                       | 27.3                          | 26.9        | 26.9                          | 28.2                   | 27.7                   | 41.1                                 | 30.9                                 | 30.8                                 | 28.3                             | 30.4                             | 29.0                             | 28.2                             | 28.3                               | 28.0                      | 37.2                         | 37.2                         |      |
| 1/24 11:00 | 27.6          | 27.2          | 26.5                       | 24.9                          | 27.1                       | 27.3                          | 26.8        | 26.8                          | 28.2                   | 27.7                   | 41.0                                 | 30.7                                 | 30.7                                 | 28.2                             | 30.3                             | 28.9                             | 28.1                             | 28.3                               | 27.9                      | 37.2                         | 37.2                         |      |
| 1/24 17:00 | 27.6          | 27.2          | 26.4                       | 24.9                          | 27.1                       | 27.4                          | 26.8        | 26.8                          | 28.1                   | 27.7                   | 41.0                                 | 30.8                                 | 30.8                                 | 28.3                             | 30.3                             | 28.9                             | 28.1                             | 28.3                               | 27.8                      | 37.2                         | 37.2                         |      |
| 1/24 23:00 | 27.6          | 27.3          | 26.5                       | 25.0                          | 27.1                       | 27.3                          | 26.8        | 26.9                          | 28.2                   | 27.7                   | 41.1                                 | 30.8                                 | 30.7                                 | 28.3                             | 30.3                             | 29.0                             | 28.1                             | 28.3                               | 27.8                      | 37.2                         | 37.1                         |      |
| 1/25 5:00  | 27.6          | 27.2          | 26.4                       | 24.9                          | 27.1                       | 27.3                          | 26.8        | 26.8                          | 28.2                   | 27.7                   | 41.0                                 | 30.7                                 | 30.7                                 | 28.3                             | 30.4                             | 28.9                             | 28.1                             | 28.3                               | 27.8                      | 37.1                         | 37.1                         |      |
| 1/25 11:00 | 27.5          | 27.2          | 26.6                       | 25.1                          | 27.1                       | 27.2                          | 26.8        | 26.9                          | 28.2                   | 27.7                   | 40.9                                 | 30.6                                 | 30.6                                 | 28.2                             | 30.3                             | 28.9                             | 28.0                             | 28.2                               | 27.7                      | 37.1                         | 37.1                         |      |
| 1/25 17:00 | 27.1          | 26.7          | 25.9                       | 24.0                          | 26.6                       | 26.8                          | 26.3        | 26.3                          | 27.9                   | 27.3                   | 40.5                                 | 30.3                                 | 30.5                                 | 27.8                             | 29.9                             | 28.5                             | 27.8                             | 28.1                               | 27.5                      | 37.1                         | 37.1                         |      |
| 1/25 23:00 | 25.9          | 25.4          | 24.7                       | 22.5                          | 25.4                       | 25.8                          | 25.0        | 25.1                          | 27.3                   | 26.4                   | 39.5                                 | 29.4                                 | 29.4                                 | 26.7                             | 28.8                             | 27.6                             | 26.9                             | 27.3                               | 26.6                      | 37.1                         | 37.0                         |      |
| 1/26 5:00  | 25.3          | 24.9          | 24.2                       | 21.9                          | 24.8                       | 25.2                          | 24.4        | 24.5                          | 26.7                   | 25.9                   | 38.9                                 | 28.8                                 | 28.9                                 | 26.1                             | 28.2                             | 27.0                             | 26.4                             | 26.8                               | 26.0                      | 37.1                         | 37.0                         |      |
| 1/26 11:00 | 25.1          | 24.6          | 24.0                       | 21.8                          | 24.6                       | 24.9                          | 24.2        | 24.3                          | 26.5                   | 25.7                   | 38.8                                 | 28.5                                 | 28.7                                 | 25.9                             | 27.9                             | 26.7                             | 26.0                             | 26.5                               | 25.8                      | 37.0                         | 37.0                         |      |
| 1/26 17:00 | 26.0          | 25.5          | 24.8                       | 23.1                          | 25.6                       | 25.7                          | 25.1        | 25.2                          | 27.0                   | 26.5                   | 39.9                                 | 29.4                                 | 29.6                                 | 26.8                             | 28.7                             | 27.4                             | 26.6                             | 27.0                               | 26.5                      | 37.0                         | 36.9                         |      |
| 1/26 23:00 | 26.5          | 26.1          | 25.4                       | 23.6                          | 26.0                       | 26.2                          | 25.6        | 25.7                          | 27.4                   | 26.8                   | 40.2                                 | 29.7                                 | 30.0                                 | 27.2                             | 29.2                             | 27.8                             | 27.1                             | 27.4                               | 26.9                      | 36.9                         | 36.9                         |      |
| 1/27 5:00  | 26.6          | 26.2          | 25.4                       | 23.7                          | 26.0                       | 26.2                          | 25.7        | 25.8                          | 27.4                   | 26.9                   | 40.3                                 | 29.8                                 | 30.0                                 | 27.2                             | 29.2                             | 27.9                             | 27.1                             | 27.5                               | 26.9                      | 36.9                         | 36.8                         |      |
| 1/27 11:00 | 26.6          | 26.3          | 25.6                       | 24.0                          | 26.1                       | 26.3                          | 25.8        | 25.8                          | 27.4                   | 26.9                   | 40.3                                 | 29.8                                 | 30.1                                 | 27.2                             | 29.2                             | 27.9                             | 27.2                             | 27.4                               | 26.9                      | 36.8                         | 36.8                         |      |
| 1/27 17:00 | 26.6          | 26.0          | 25.3                       | 23.6                          | 26.3                       | 26.4                          | 25.9        | 25.9                          | 27.5                   | 27.0                   | 40.6                                 | 30.0                                 | 30.1                                 | 27.3                             | 29.5                             | 28.0                             | 27.2                             | 27.5                               | 27.1                      | 36.8                         | 36.8                         |      |
| 1/27 23:00 | 26.7          | 26.1          | 25.3                       | 23.7                          | 26.3                       | 26.4                          | 25.9        | 26.0                          | 27.6                   | 27.2                   | 41.1                                 | 30.2                                 | 30.3                                 | 27.5                             | 29.5                             | 28.0                             | 27.2                             | 27.6                               | 27.3                      | 36.8                         | 36.7                         |      |
| 1/28 5:00  | 26.7          | 26.1          | 25.4                       | 23.7                          | 26.4                       | 26.5                          | 26.0        | 26.0                          | 27.6                   | 27.1                   | 41.4                                 | 30.3                                 | 30.5                                 | 27.4                             | 29.6                             | 28.0                             | 27.2                             | 27.6                               | 27.3                      | 36.7                         | 36.7                         |      |
| 1/28 11:00 | 26.6          | 26.1          | 25.4                       | 23.7                          | 26.3                       | 26.5                          | 25.9        | 26.0                          | 27.6                   | 27.1                   | 41.7                                 | 30.3                                 | 30.7                                 | 27.4                             | 29.6                             | 28.1                             | 27.2                             | 27.5                               | 27.3                      | 36.7                         | 36.7                         |      |