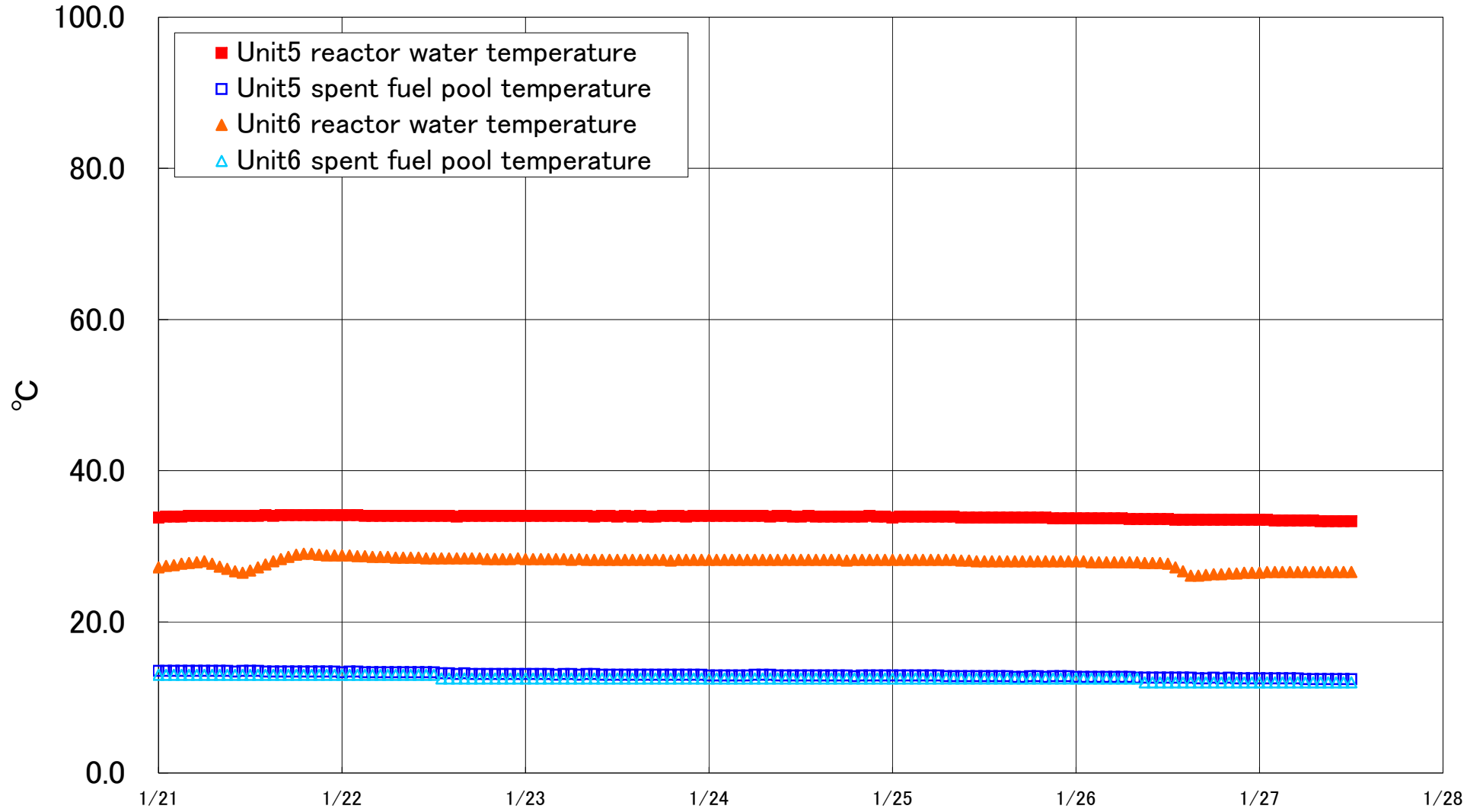


Fukushima Daiichi Nuclear Power Station Units 5·6 Reactor water /spent fuel pool temperature



Fukushima Daiichi Nuclear Power Station Unit5·6 Reactor water/spent fuel pool temperature

| Date       | Unit5 reactor water temperature | Unit5 spent fuel pool temperature | Unit6 reactor water temperature | Unit6 spent fuel pool temperature |
|------------|---------------------------------|-----------------------------------|---------------------------------|-----------------------------------|
| 1/24 20:00 | 33.9                            | 12.9                              | 28.2                            | 12.5                              |
| 1/24 21:00 | 34.0                            | 12.9                              | 28.2                            | 12.5                              |
| 1/24 22:00 | 33.9                            | 12.9                              | 28.2                            | 12.5                              |
| 1/24 23:00 | 33.9                            | 12.9                              | 28.2                            | 12.5                              |
| 1/25 0:00  | 33.8                            | 12.9                              | 28.2                            | 12.5                              |
| 1/25 1:00  | 33.9                            | 12.9                              | 28.2                            | 12.5                              |
| 1/25 2:00  | 33.9                            | 12.9                              | 28.2                            | 12.5                              |
| 1/25 3:00  | 33.9                            | 12.9                              | 28.2                            | 12.5                              |
| 1/25 4:00  | 33.9                            | 12.9                              | 28.2                            | 12.5                              |
| 1/25 5:00  | 33.9                            | 12.9                              | 28.2                            | 12.5                              |
| 1/25 6:00  | 33.9                            | 12.9                              | 28.2                            | 12.5                              |
| 1/25 7:00  | 33.9                            | 12.8                              | 28.2                            | 12.5                              |
| 1/25 8:00  | 33.9                            | 12.8                              | 28.2                            | 12.5                              |
| 1/25 9:00  | 33.8                            | 12.8                              | 28.1                            | 12.5                              |
| 1/25 10:00 | 33.8                            | 12.8                              | 28.1                            | 12.5                              |
| 1/25 11:00 | 33.8                            | 12.8                              | 28.0                            | 12.5                              |
| 1/25 12:00 | 33.8                            | 12.8                              | 28.0                            | 12.5                              |
| 1/25 13:00 | 33.8                            | 12.8                              | 28.0                            | 12.5                              |
| 1/25 14:00 | 33.8                            | 12.8                              | 28.0                            | 12.5                              |
| 1/25 15:00 | 33.8                            | 12.8                              | 28.0                            | 12.5                              |
| 1/25 16:00 | 33.8                            | 12.7                              | 28.0                            | 12.5                              |
| 1/25 17:00 | 33.8                            | 12.7                              | 28.0                            | 12.5                              |
| 1/25 18:00 | 33.8                            | 12.8                              | 28.0                            | 12.5                              |
| 1/25 19:00 | 33.8                            | 12.8                              | 28.0                            | 12.5                              |
| 1/25 20:00 | 33.8                            | 12.7                              | 28.0                            | 12.5                              |
| 1/25 21:00 | 33.7                            | 12.8                              | 28.0                            | 12.5                              |
| 1/25 22:00 | 33.7                            | 12.8                              | 28.0                            | 12.5                              |
| 1/25 23:00 | 33.7                            | 12.8                              | 28.0                            | 12.5                              |
| 1/26 0:00  | 33.7                            | 12.7                              | 28.0                            | 12.5                              |
| 1/26 1:00  | 33.7                            | 12.7                              | 28.0                            | 12.5                              |
| 1/26 2:00  | 33.7                            | 12.7                              | 27.9                            | 12.5                              |
| 1/26 3:00  | 33.7                            | 12.7                              | 27.9                            | 12.5                              |
| 1/26 4:00  | 33.7                            | 12.7                              | 27.9                            | 12.5                              |
| 1/26 5:00  | 33.7                            | 12.7                              | 27.9                            | 12.5                              |
| 1/26 6:00  | 33.7                            | 12.7                              | 27.9                            | 12.5                              |
| 1/26 7:00  | 33.6                            | 12.7                              | 27.9                            | 12.5                              |
| 1/26 8:00  | 33.6                            | 12.6                              | 27.9                            | 12.5                              |
| 1/26 9:00  | 33.6                            | 12.6                              | 27.8                            | 12.0                              |
| 1/26 10:00 | 33.6                            | 12.6                              | 27.8                            | 12.0                              |
| 1/26 11:00 | 33.6                            | 12.6                              | 27.8                            | 12.0                              |
| 1/26 12:00 | 33.6                            | 12.6                              | 27.7                            | 12.0                              |
| 1/26 13:00 | 33.5                            | 12.6                              | 27.2                            | 12.0                              |
| 1/26 14:00 | 33.5                            | 12.6                              | 26.7                            | 12.0                              |
| 1/26 15:00 | 33.5                            | 12.6                              | 26.1                            | 12.0                              |
| 1/26 16:00 | 33.5                            | 12.5                              | 26.1                            | 12.0                              |
| 1/26 17:00 | 33.5                            | 12.5                              | 26.2                            | 12.0                              |
| 1/26 18:00 | 33.5                            | 12.6                              | 26.3                            | 12.0                              |
| 1/26 19:00 | 33.5                            | 12.5                              | 26.3                            | 12.0                              |
| 1/26 20:00 | 33.5                            | 12.6                              | 26.4                            | 12.0                              |
| 1/26 21:00 | 33.5                            | 12.5                              | 26.4                            | 12.0                              |
| 1/26 22:00 | 33.5                            | 12.5                              | 26.5                            | 12.0                              |
| 1/26 23:00 | 33.5                            | 12.5                              | 26.5                            | 12.0                              |
| 1/27 0:00  | 33.5                            | 12.5                              | 26.5                            | 12.0                              |
| 1/27 1:00  | 33.5                            | 12.5                              | 26.6                            | 12.0                              |
| 1/27 2:00  | 33.4                            | 12.5                              | 26.6                            | 12.0                              |
| 1/27 3:00  | 33.4                            | 12.5                              | 26.6                            | 12.0                              |
| 1/27 4:00  | 33.4                            | 12.5                              | 26.6                            | 12.0                              |
| 1/27 5:00  | 33.4                            | 12.5                              | 26.6                            | 12.0                              |
| 1/27 6:00  | 33.4                            | 12.4                              | 26.6                            | 12.0                              |
| 1/27 7:00  | 33.4                            | 12.4                              | 26.6                            | 12.0                              |
| 1/27 8:00  | 33.3                            | 12.4                              | 26.6                            | 12.0                              |
| 1/27 9:00  | 33.3                            | 12.4                              | 26.6                            | 12.0                              |
| 1/27 10:00 | 33.3                            | 12.4                              | 26.6                            | 12.0                              |
| 1/27 11:00 | 33.3                            | 12.4                              | 26.6                            | 12.0                              |
| 1/27 12:00 | 33.3                            | 12.4                              | 26.6                            | 12.0                              |