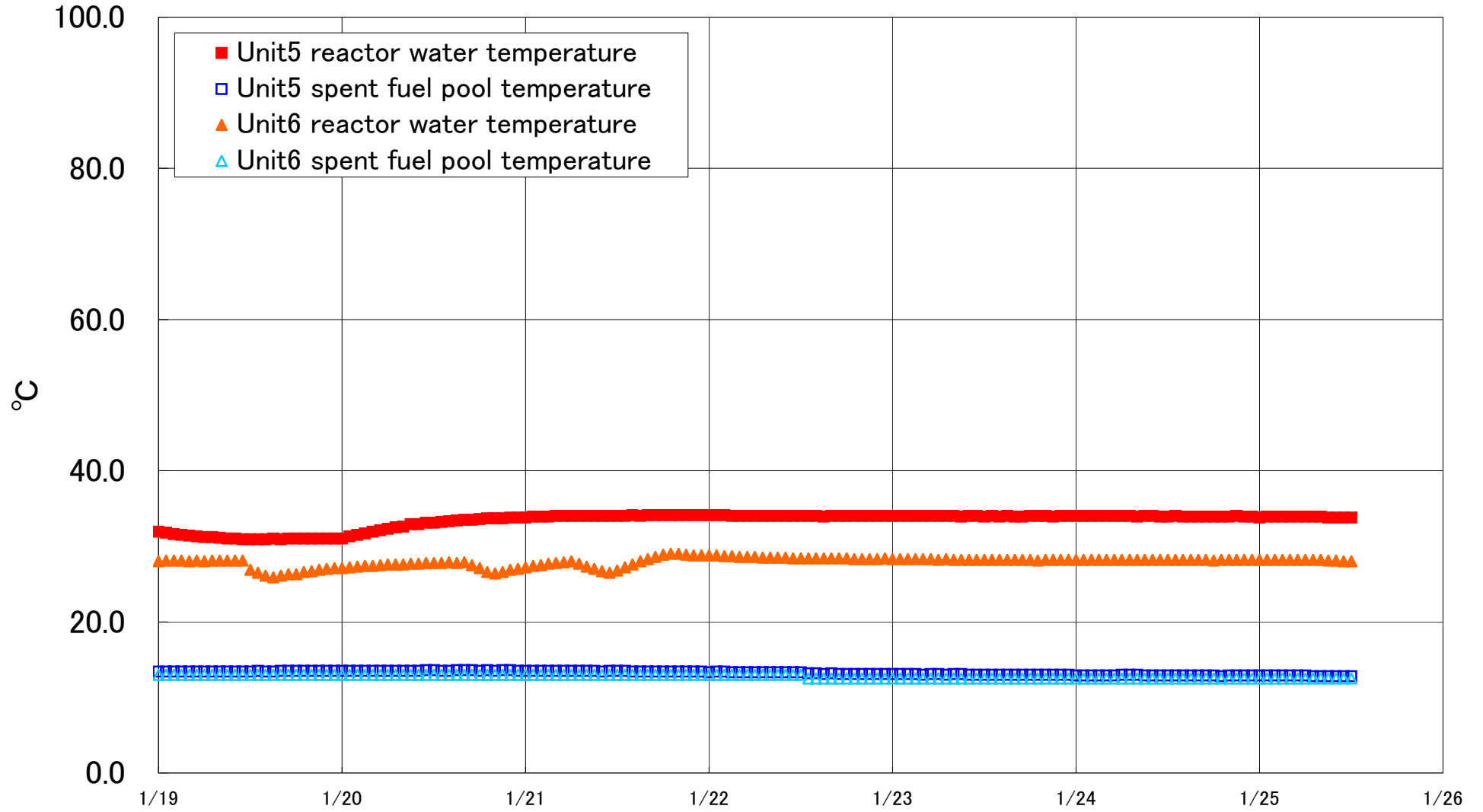


Fukushima Daiichi Nuclear Power Station Units 5·6 Reactor water /spent fuel pool temperature



Fukushima Daiichi Nuclear Power Station Unit5·6 Reactor water/spent fuel pool temperature

Date	Unit5 reactor water temperature	Unit5 spent fuel pool temperature	Unit6 reactor water temperature	Unit6 spent fuel pool temperature
1/22 20:00	34.0	13.1	28.3	12.5
1/22 21:00	34.0	13.1	28.3	12.5
1/22 22:00	34.0	13.1	28.3	12.5
1/22 23:00	34.0	13.1	28.4	12.5
1/23 0:00	34.0	13.1	28.3	12.5
1/23 1:00	34.0	13.1	28.3	12.5
1/23 2:00	34.0	13.1	28.3	12.5
1/23 3:00	34.0	13.1	28.3	12.5
1/23 4:00	34.0	13.0	28.3	12.5
1/23 5:00	34.0	13.1	28.3	12.5
1/23 6:00	34.0	13.1	28.2	12.5
1/23 7:00	34.0	13.0	28.3	12.5
1/23 8:00	34.0	13.1	28.2	12.5
1/23 9:00	33.9	13.1	28.2	12.5
1/23 10:00	34.0	13.0	28.2	12.5
1/23 11:00	34.0	13.0	28.2	12.5
1/23 12:00	33.9	13.0	28.2	12.5
1/23 13:00	34.0	13.0	28.2	12.5
1/23 14:00	33.9	13.0	28.2	12.5
1/23 15:00	34.0	13.0	28.2	12.5
1/23 16:00	33.9	13.0	28.2	12.5
1/23 17:00	33.9	13.0	28.2	12.5
1/23 18:00	34.0	13.0	28.2	12.5
1/23 19:00	34.0	13.0	28.1	12.5
1/23 20:00	34.0	13.0	28.2	12.5
1/23 21:00	33.9	13.0	28.2	12.5
1/23 22:00	34.0	13.0	28.2	12.5
1/23 23:00	34.0	13.0	28.2	12.5
1/24 0:00	34.0	12.9	28.2	12.5
1/24 1:00	34.0	12.9	28.2	12.5
1/24 2:00	34.0	12.9	28.2	12.5
1/24 3:00	34.0	12.9	28.2	12.5
1/24 4:00	34.0	12.9	28.2	12.5
1/24 5:00	34.0	12.9	28.2	12.5
1/24 6:00	34.0	13.0	28.2	12.5
1/24 7:00	34.0	13.0	28.2	12.5
1/24 8:00	33.9	13.0	28.2	12.5
1/24 9:00	34.0	12.9	28.2	12.5
1/24 10:00	34.0	12.9	28.2	12.5
1/24 11:00	33.9	12.9	28.2	12.5
1/24 12:00	33.9	12.9	28.2	12.5
1/24 13:00	34.0	12.9	28.2	12.5
1/24 14:00	33.9	12.9	28.2	12.5
1/24 15:00	33.9	12.9	28.2	12.5
1/24 16:00	33.9	12.9	28.2	12.5
1/24 17:00	33.9	12.9	28.2	12.5
1/24 18:00	33.9	12.9	28.1	12.5
1/24 19:00	33.9	12.8	28.2	12.5
1/24 20:00	33.9	12.9	28.2	12.5
1/24 21:00	34.0	12.9	28.2	12.5
1/24 22:00	33.9	12.9	28.2	12.5
1/24 23:00	33.9	12.9	28.2	12.5
1/25 0:00	33.8	12.9	28.2	12.5
1/25 1:00	33.9	12.9	28.2	12.5
1/25 2:00	33.9	12.9	28.2	12.5
1/25 3:00	33.9	12.9	28.2	12.5
1/25 4:00	33.9	12.9	28.2	12.5
1/25 5:00	33.9	12.9	28.2	12.5
1/25 6:00	33.9	12.9	28.2	12.5
1/25 7:00	33.9	12.8	28.2	12.5
1/25 8:00	33.9	12.8	28.2	12.5
1/25 9:00	33.8	12.8	28.1	12.5
1/25 10:00	33.8	12.8	28.1	12.5
1/25 11:00	33.8	12.8	28.0	12.5
1/25 12:00	33.8	12.8	28.0	12.5