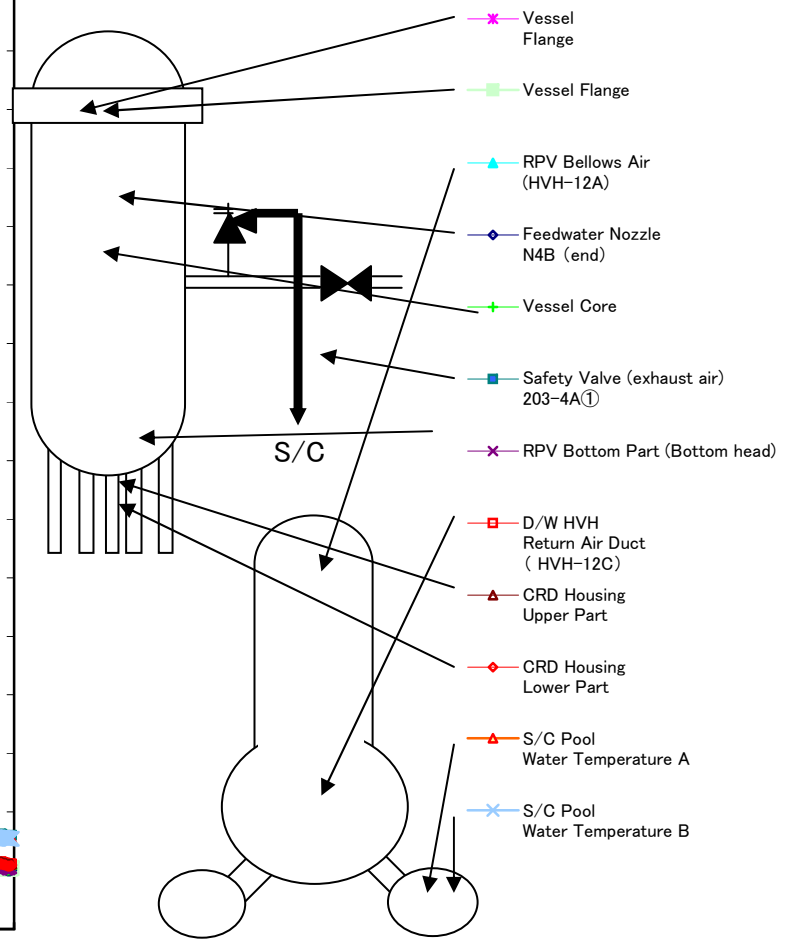
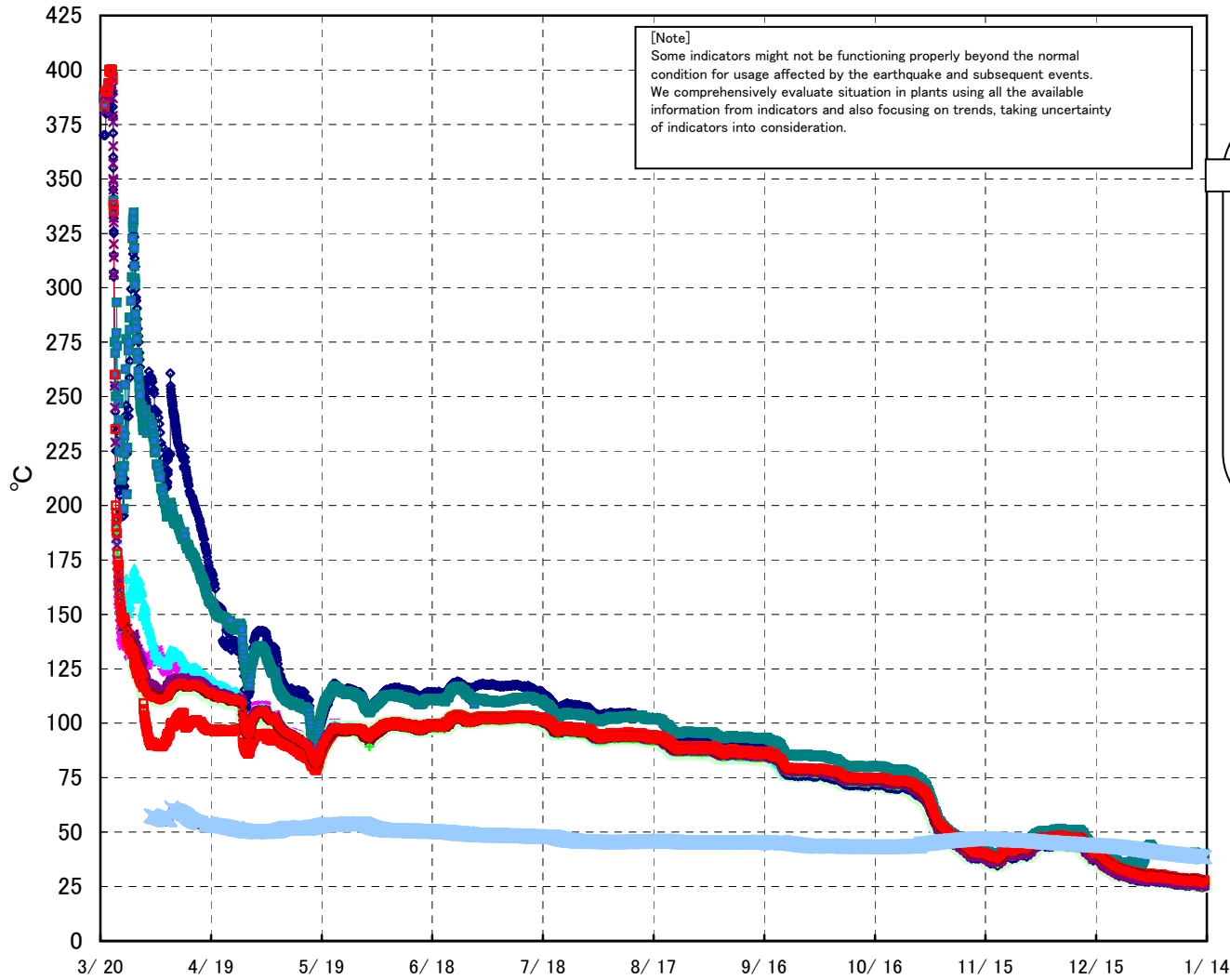
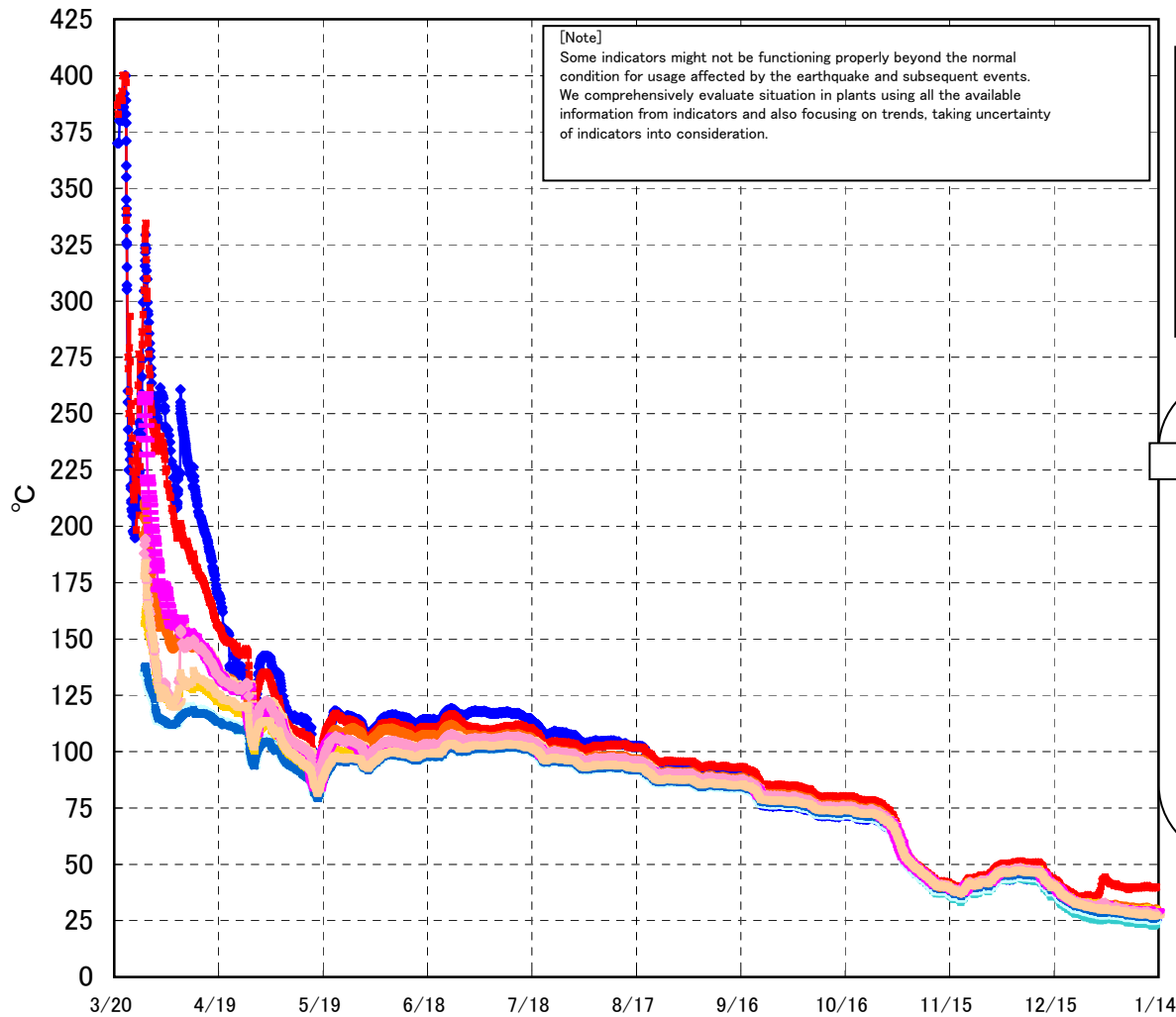


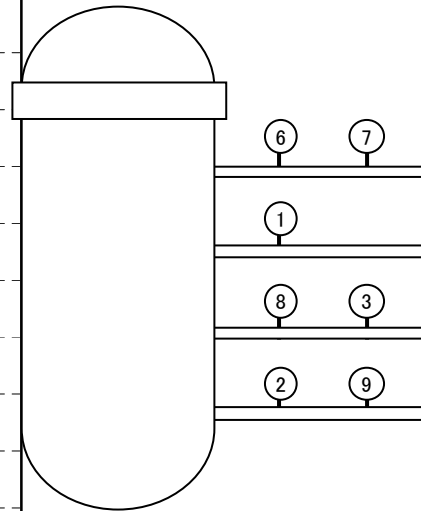
# Fukushima Daiichi Nuclear Power Station Unit 1 Parameters of Temperature (Typical Points)



# Fukushima Daiichi Nuclear Power Station Unit 1 Parameters of Temperature (Feedwater Nozzle and Safety Valve (Exhaust Air))



Continuously measured temperatures of feedwater nozzle, N48, and safety valve (exhaust air), 203-4A, have been rising since March 27. In order to compare them with other similar points, some measurement points have been added since 12:30 of March 28.



- ◆ Feedwater Nozzle N4B (end)
- ◆ Feedwater Nozzle N4B (inside)
- ◆ Feedwater Nozzle N4C (end)
- ◆ Feedwater Nozzle N4C (inside)

- ◆— Safety Valve (exhaust air) 203-4A①
- ◆— Safety Valve (exhaust air) 203-4C②
- ◆— Safety Valve (exhaust air) 203-4B③
- exhaust air to D/W

- ◆— SR Valve (exhaust air) 203-3A⑥
- ◆— SR Valve (exhaust air) 203-3B⑦
- ◆— SR Valve (exhaust air) 203-3C⑧
- ◆— SR Valve (exhaust air) 203-3D⑨
- exhaust air to S/C

Fukushima Daiichi Nuclear Power Station Unit1 Parameters of Temperature

[Note]  
Some indicators might not be functioning properly beyond the normal condition for usage affected by the earthquake and subsequent events.  
We comprehensively evaluate situation in plants using all the available information from indicators and also focusing on trends, taking uncertainty

| Date       | Vessel Flange | Vessel Flange | Feedwater Nozzle N4B (end) | Feedwater Nozzle N4B (inside) | Feedwater Nozzle N4C (end) | Feedwater Nozzle N4C (inside) | Vessel Core | RPV Bottom Part (Bottom head) | CRD Housing Upper Part | CRD Housing Lower Part | Safety Valve (exhaust air) 203-4A(1) | Safety Valve (exhaust air) 203-4C(2) | Safety Valve (exhaust air) 203-4B(3) | SR Valve (exhaust air) 203-3A(6) | SR Valve (exhaust air) 203-3B(7) | SR Valve (exhaust air) 203-3C(8) | SR Valve (exhaust air) 203-3D(9) | D/W HVH Return Air Duct ( HVH-12C) | RPV Bellows Air (HVH-12A) | S/C Pool Water Temperature A | S/C Pool Water Temperature B | note |
|------------|---------------|---------------|----------------------------|-------------------------------|----------------------------|-------------------------------|-------------|-------------------------------|------------------------|------------------------|--------------------------------------|--------------------------------------|--------------------------------------|----------------------------------|----------------------------------|----------------------------------|----------------------------------|------------------------------------|---------------------------|------------------------------|------------------------------|------|
| 1/7 5:00   | 27.1          | 26.8          | 25.8                       | 24.0                          | 26.6                       | 27.0                          | 26.3        | 26.4                          | 28.5                   | 27.7                   | 39.6                                 | 30.3                                 | 30.1                                 | 28.0                             | 29.9                             | 28.9                             | 28.0                             | 28.7                               | 27.9                      | 39.6                         | 39.5                         |      |
| 1/7 11:00  | 27.0          | 26.7          | 25.8                       | 24.0                          | 26.6                       | 27.0                          | 26.3        | 26.3                          | 28.4                   | 27.7                   | 39.6                                 | 30.2                                 | 30.0                                 | 28.0                             | 29.8                             | 28.8                             | 28.0                             | 28.5                               | 27.8                      | 39.5                         | 39.5                         |      |
| 1/7 17:00  | 27.2          | 26.9          | 26.0                       | 24.2                          | 26.8                       | 27.1                          | 26.5        | 26.6                          | 28.6                   | 27.8                   | 39.7                                 | 30.3                                 | 30.1                                 | 28.1                             | 30.0                             | 28.8                             | 28.1                             | 28.7                               | 27.9                      | 39.5                         | 39.4                         |      |
| 1/7 23:00  | 27.1          | 26.7          | 25.9                       | 24.0                          | 26.6                       | 27.0                          | 26.4        | 26.5                          | 28.6                   | 27.8                   | 40.0                                 | 30.3                                 | 30.1                                 | 27.9                             | 29.9                             | 28.8                             | 28.1                             | 28.7                               | 27.9                      | 39.5                         | 39.4                         |      |
| 1/8 5:00   | 26.6          | 26.3          | 25.4                       | 23.3                          | 26.2                       | 26.6                          | 25.9        | 26.0                          | 28.3                   | 27.5                   | 39.6                                 | 29.9                                 | 29.8                                 | 27.5                             | 29.5                             | 28.5                             | 27.7                             | 28.3                               | 27.5                      | 39.4                         | 39.4                         |      |
| 1/8 11:00  | 26.6          | 26.2          | 25.4                       | 23.5                          | 26.2                       | 26.6                          | 25.9        | 26.0                          | 28.2                   | 27.5                   | 39.5                                 | 29.9                                 | 29.7                                 | 27.5                             | 29.4                             | 28.4                             | 27.6                             | 28.2                               | 27.4                      | 39.3                         | 39.3                         |      |
| 1/8 17:00  | 26.9          | 26.6          | 25.7                       | 23.9                          | 26.5                       | 26.8                          | 26.2        | 26.2                          | 28.4                   | 27.6                   | 39.8                                 | 30.2                                 | 30.1                                 | 27.8                             | 29.7                             | 28.6                             | 27.8                             | 28.5                               | 27.7                      | 39.3                         | 39.3                         |      |
| 1/8 23:00  | 26.7          | 26.4          | 25.6                       | 23.6                          | 26.3                       | 26.7                          | 26.0        | 26.0                          | 28.3                   | 27.5                   | 39.7                                 | 30.0                                 | 29.9                                 | 27.6                             | 29.6                             | 28.5                             | 27.8                             | 28.4                               | 27.6                      | 39.3                         | 39.2                         |      |
| 1/9 5:00   | 26.4          | 26.1          | 25.3                       | 23.3                          | 26.0                       | 26.5                          | 25.8        | 25.8                          | 28.2                   | 27.4                   | 39.5                                 | 29.8                                 | 29.7                                 | 27.4                             | 29.4                             | 28.3                             | 27.6                             | 28.2                               | 27.4                      | 39.2                         | 39.2                         |      |
| 1/9 11:00  | 26.6          | 26.3          | 25.5                       | 23.7                          | 26.3                       | 26.6                          | 25.9        | 26.0                          | 28.2                   | 27.5                   | 39.7                                 | 30.0                                 | 29.8                                 | 27.5                             | 29.4                             | 28.3                             | 27.6                             | 28.2                               | 27.4                      | 39.2                         | 39.1                         |      |
| 1/9 17:00  | 27.2          | 26.8          | 26.0                       | 24.3                          | 26.7                       | 27.1                          | 26.4        | 26.6                          | 28.6                   | 27.9                   | 40.3                                 | 30.5                                 | 30.3                                 | 28.0                             | 29.9                             | 28.8                             | 28.1                             | 28.5                               | 27.9                      | 39.1                         | 39.1                         |      |
| 1/9 23:00  | 27.0          | 26.6          | 25.9                       | 24.0                          | 26.5                       | 26.9                          | 26.2        | 26.4                          | 28.5                   | 27.6                   | 40.2                                 | 30.3                                 | 30.2                                 | 27.9                             | 29.8                             | 28.7                             | 28.1                             | 28.5                               | 27.9                      | 39.1                         | 39.1                         |      |
| 1/10 5:00  | 26.8          | 26.5          | 25.7                       | 23.8                          | 26.4                       | 26.8                          | 26.1        | 26.3                          | 28.4                   | 27.6                   | 40.1                                 | 30.2                                 | 30.0                                 | 27.7                             | 29.7                             | 28.5                             | 27.8                             | 28.4                               | 27.7                      | 39.1                         | 39.0                         |      |
| 1/10 11:00 | 26.9          | 26.6          | 25.7                       | 23.9                          | 26.5                       | 26.8                          | 26.2        | 26.3                          | 28.4                   | 27.6                   | 40.2                                 | 30.2                                 | 30.1                                 | 27.8                             | 29.7                             | 28.6                             | 27.8                             | 28.3                               | 27.8                      | 39.0                         | 39.0                         |      |
| 1/10 17:00 | 27.5          | 27.1          | 26.3                       | 24.6                          | 27.0                       | 27.3                          | 26.7        | 26.8                          | 28.7                   | 28.0                   | 40.6                                 | 30.7                                 | 30.7                                 | 28.3                             | 30.2                             | 29.0                             | 28.2                             | 28.7                               | 28.2                      | 39.0                         | 39.0                         |      |
| 1/10 23:00 | 27.1          | 26.7          | 26.0                       | 24.0                          | 26.6                       | 27.0                          | 26.3        | 26.4                          | 28.6                   | 27.7                   | 40.4                                 | 30.4                                 | 30.3                                 | 28.0                             | 30.0                             | 28.8                             | 28.0                             | 28.6                               | 28.0                      | 39.0                         | 38.9                         |      |
| 1/11 5:00  | 26.7          | 26.4          | 25.6                       | 23.5                          | 26.3                       | 26.7                          | 26.0        | 26.1                          | 28.3                   | 27.5                   | 40.0                                 | 30.1                                 | 29.9                                 | 27.6                             | 29.6                             | 28.5                             | 27.7                             | 28.3                               | 27.6                      | 38.9                         | 38.9                         |      |
| 1/11 11:00 | 26.4          | 26.1          | 25.3                       | 23.2                          | 26.0                       | 26.4                          | 25.7        | 25.8                          | 28.1                   | 27.3                   | 39.7                                 | 29.8                                 | 29.7                                 | 27.3                             | 29.3                             | 28.2                             | 27.5                             | 28.1                               | 27.3                      | 38.9                         | 38.8                         |      |
| 1/11 17:00 | 26.5          | 26.2          | 25.6                       | 23.5                          | 26.3                       | 26.6                          | 25.9        | 25.9                          | 28.2                   | 27.5                   | 39.9                                 | 29.9                                 | 29.8                                 | 27.4                             | 29.4                             | 28.2                             | 27.6                             | 28.1                               | 27.4                      | 38.8                         | 38.8                         |      |
| 1/11 23:00 | 26.2          | 25.8          | 25.2                       | 23.1                          | 25.8                       | 26.2                          | 25.5        | 25.6                          | 28.0                   | 27.1                   | 39.8                                 | 29.6                                 | 29.7                                 | 27.1                             | 29.2                             | 28.0                             | 27.3                             | 27.8                               | 27.1                      | 38.8                         | 38.8                         |      |
| 1/12 5:00  | 25.8          | 25.5          | 24.9                       | 22.7                          | 25.5                       | 26.0                          | 25.2        | 25.2                          | 27.7                   | 26.9                   | 39.6                                 | 29.4                                 | 29.4                                 | 26.8                             | 28.9                             | 27.8                             | 27.0                             | 27.6                               | 26.8                      | 38.7                         | 38.7                         |      |
| 1/12 11:00 | 25.7          | 25.5          | 24.7                       | 22.7                          | 25.4                       | 25.8                          | 25.1        | 25.1                          | 27.6                   | 26.8                   | 39.5                                 | 29.3                                 | 29.3                                 | 26.7                             | 28.8                             | 27.7                             | 26.8                             | 27.5                               | 26.7                      | 38.7                         | 38.7                         |      |
| 1/12 17:00 | 26.2          | 25.7          | 24.9                       | 22.9                          | 25.9                       | 26.2                          | 25.5        | 25.4                          | 27.7                   | 26.9                   | 39.8                                 | 29.6                                 | 29.7                                 | 27.1                             | 29.1                             | 27.9                             | 27.2                             | 27.7                               | 27.3                      | 38.7                         | 38.6                         |      |
| 1/12 23:00 | 25.9          | 25.5          | 24.7                       | 22.6                          | 25.6                       | 26.0                          | 25.2        | 25.1                          | 27.6                   | 26.8                   | 39.6                                 | 29.5                                 | 29.5                                 | 26.9                             | 28.9                             | 27.8                             | 27.0                             | 27.6                               | 27.0                      | 38.7                         | 38.6                         |      |
| 1/13 5:00  | 26.3          | 25.9          | 25.1                       | 23.2                          | 25.9                       | 26.3                          | 25.6        | 25.5                          | 27.7                   | 27.0                   | 39.8                                 | 29.7                                 | 29.6                                 | 27.1                             | 29.2                             | 27.9                             | 27.2                             | 27.7                               | 27.2                      | 38.6                         | 38.6                         |      |
| 1/13 11:00 | 26.4          | 26.0          | 25.2                       | 23.3                          | 26.1                       | 26.4                          | 25.7        | 25.7                          | 27.8                   | 27.1                   | 40.0                                 | 29.8                                 | 29.8                                 | 27.3                             | 29.3                             | 28.1                             | 27.3                             | 27.7                               | 27.4                      | 38.6                         | 38.5                         |      |