

- After the completion of the fourth discharge of ALPS treated water in FY2024, we plan to inspect measurement/confirmation facility sequentially for each facility group based on long-term inspection plan.
- After completion of the fourth and fifth discharges, Group C facilities and Group A facilities were inspected, respectively. After completion of the sixth discharge, we inspect group B facilities and common facilities (transfer/dilution/discharge/water intake facilities).
- Since measurement/confirmation facility, etc. consists of three groups (Group A, Group B, and Group C), if one group is under inspection, the other two groups can be used. Therefore the discharge plan and schedule will not be affected.
- Inspection periods are as follows:
 - Facilities related to tank group C : August 26, 2024~ late November 2024(plan)
 - Facilities related to tank group A : October 15, 2024~ late December 2024(plan)
 - Facilities related to tank group B : November 5, 2024~ May 2025(plan)
 - Common facilities (transfer, dilution, water discharge, and water intake facilities) : November 5, 2024~ early March 2025(plan)

< Announced as of [November 5, 2024](#)>

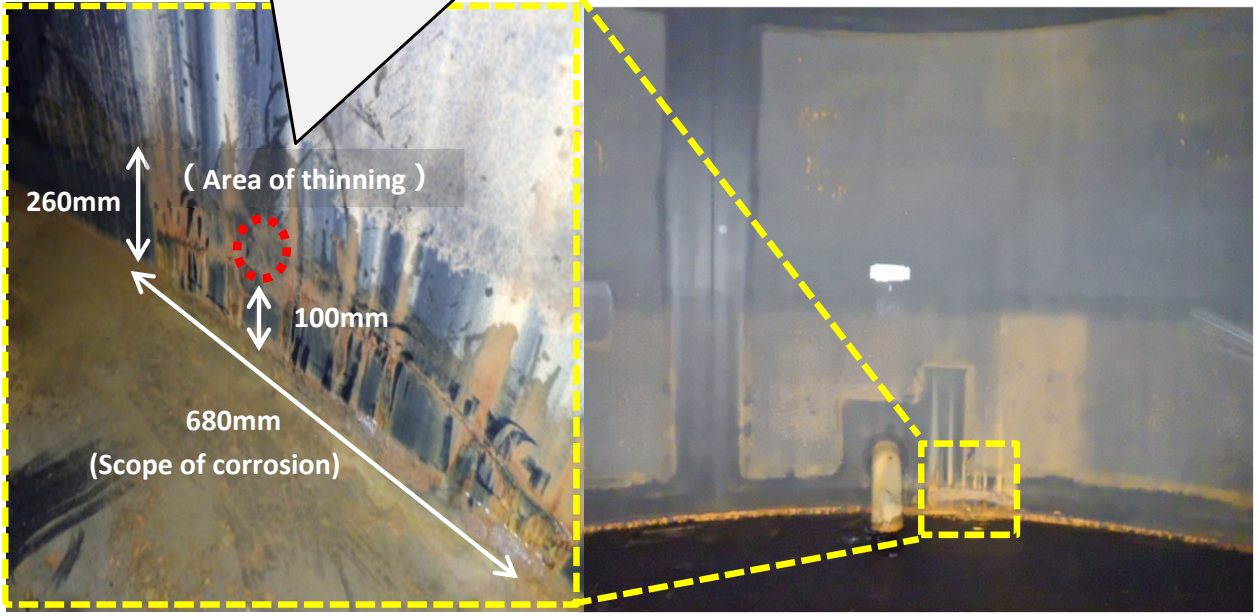
- No abnormalities were found with measurement/confirmation facility tank Group C. Measurement/confirmation facility tanks are regularly subjected to external and internal inspections in order to detect abnormalities early in an effort to maintain long-term integrity. If any paint deterioration or corrosion is found during the inspections, repairs are made as needed.
- From November 27 until the end of December, ALPS treated water will be transferred from G4 South area Group A/B to the measurement/confirmation facility tank Group C in preparation for the seventh discharge of FY2024.
- Going forward, we will remain vigilant to ensure the safe and stable discharge of ALPS treated water.

Detailed inspection results of Measurement/confirmation facility tank Group C

- An internal inspection of the bottom of measurement/confirmation facility tank Group C was performed and no abnormalities were found*.
- The paint some swellings/cracks and rust were found, but there were no problems with tank functionality, so repairs were made.

* An ultrasonic thickness gauge was used to measure the thickness of the metal walls from inside the tanks and we confirmed that the thickness of the walls of the tanks exceeds what is necessary.

The most corrosion/thinning area in group C (C5 tank)
Minimum thickness: **12.89mm** (Required thickness: 10.2mm)



< Prior to repairs ① >

< Prior to repairs ② >



< After repairs >

Conditions inside measurement/confirmation facility tank Group C (C5 tank)