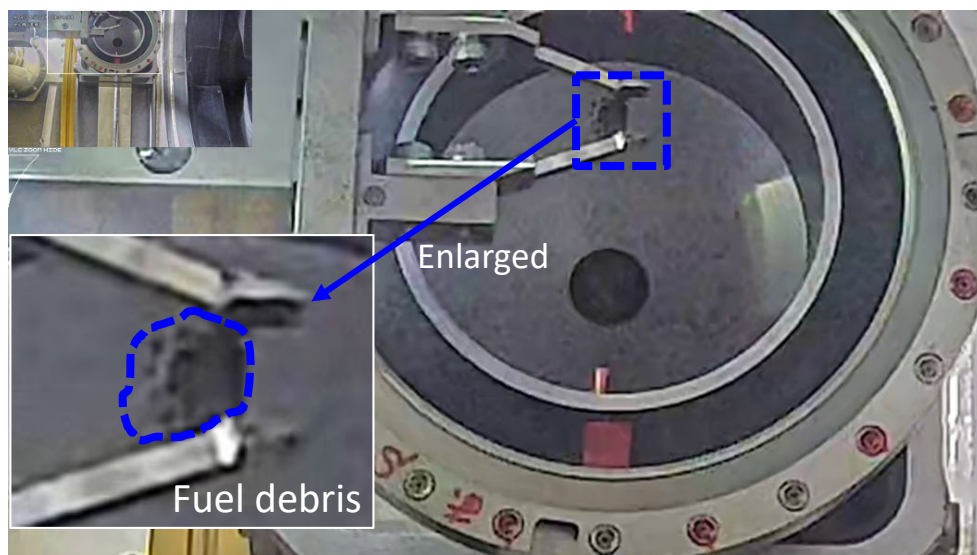


Fukushima Daiichi Nuclear Power Station

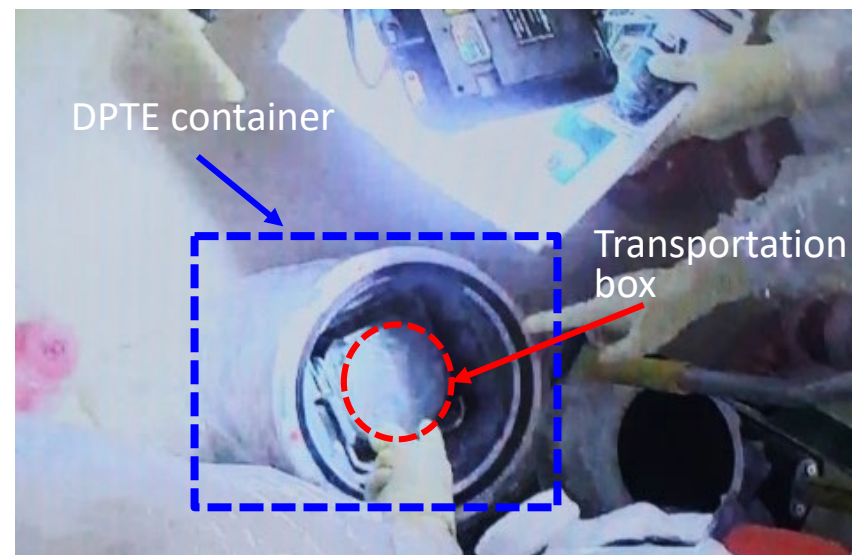
Completion of fuel debris trial retrieval from Unit 2

< Reference documents >
November 7, 2024
Tokyo Electric Power Company Holdings, Inc.
Fukushima Daiichi Decontamination &
Decommissioning Engineering Company

- On November 6, we confirmed that the dose rate of the sampled fuel debris is less than 24mSv/h (at a distance of 20cm), which is the criteria for proceeding with debris retrieval, thus the grasped sample was inserted into a transportation box.
- On November 7, the side hatch of the enclosure was opened and the transportation box was removed from inside the enclosure. Then finally the box was stored in a DPTE (Double Porte pour Transfert Etanche) container.
(The fuel debris trial retrieval work is deemed to have been completed when the transportation box is inserted into the DPTE container.)
- Currently mass and so on are being measured inside at glove box and preparations are being made for off-site transport. Thereafter, the fuel debris will be transported to and analyzed in detail at an off-site analysis facility.



Loading the grasped fuel debris into a transportation box
Photographed on November 6, 2024



Loading the transportation box into a DPTE container
Photographed on November 7, 2024

Unit 2 fuel debris trial retrieval work being done onsite
at the Fukushima Daiichi Nuclear Power Station