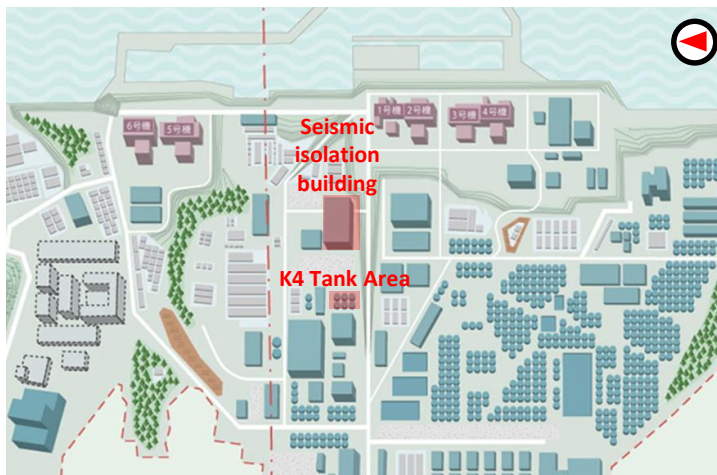


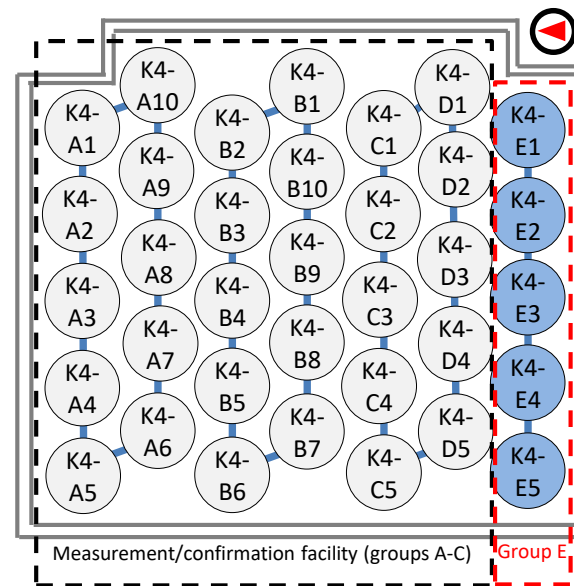
# Fukushima Daiichi Nuclear Power Station

## K4 Area Tank Group E Internal Inspection Implementation Status

- We have been continually inspecting tanks used to store ALPS treated water, etc., and have been performing maintenance as necessary.
- Recently, we performed an internal inspection of the K4 area tank group E (E1-E5), since transfer of the ALPS treated water being stored in the aforementioned tank group to the measurement/confirmation facility was completed on November 21, 2023.
- As a result of the internal inspection, we found localized corrosion and flaking paint in tanks E1, E2 and E5.
- The discovered corrosion was localized and was most likely caused by water (ALPS treated water) that seeped in between the flaking paint and the tank base metal.
- The corrosion is not of a nature that would impact the structural integrity of the tank, and there is no risk of leakage when storing ALPS treated water. The aforementioned locations will be repaired prior to using the tanks again to store ALPS treated water.
- Since tanks that store ALPS treated water, etc. on site will be used over the long-term, we will continually inspect the tanks and perform maintenance as necessary in accordance with the condition of the tanks.



Fukushima Daiichi Nuclear Power Station site diagram

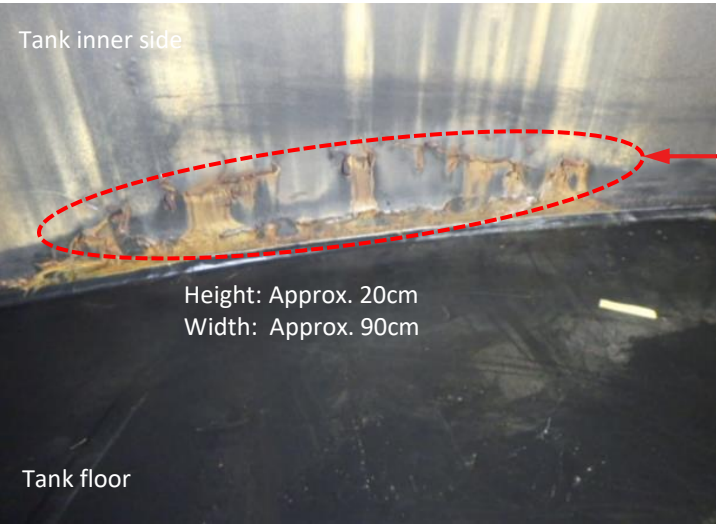
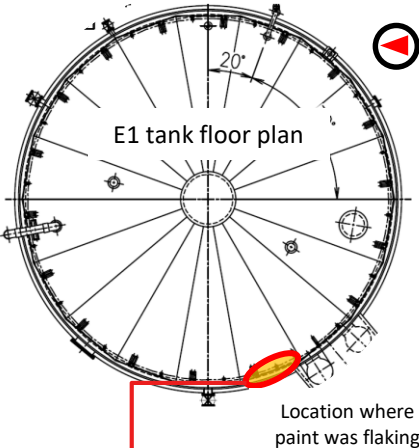


K4 area tank group layout (35 tanks in total)

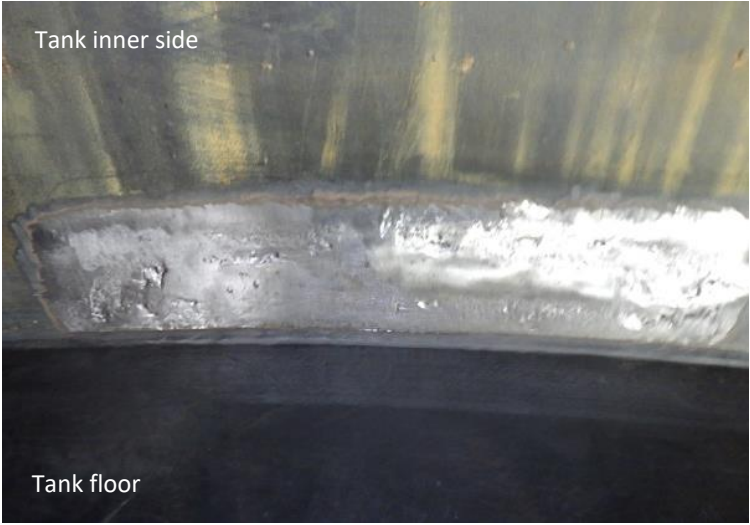
- Use: Storage of ALPS treated water
- Capacity: Approx. 1,000m<sup>3</sup>
- Inner diameter: Approx. 10m
- Height: Approx. 14.5m
- Wall thickness: Approx. 15mm
- Material: SS400
- In-service year: 2016

K4 area tank group overview

# K4 Area Tank Group E Internal Inspection Implementation Status (E1 tank)

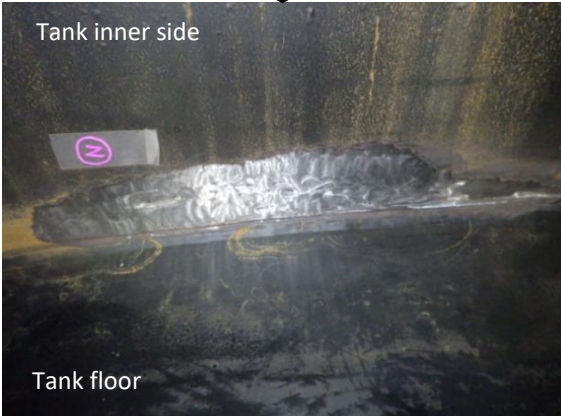
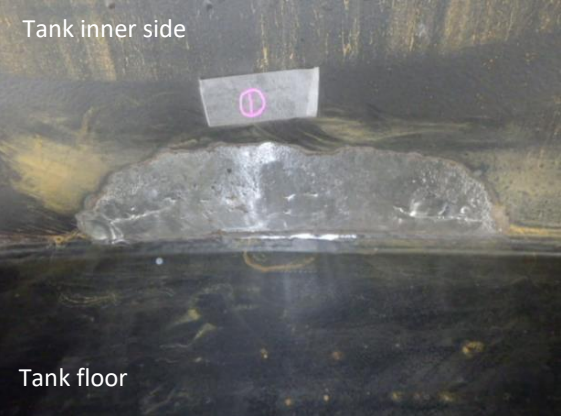
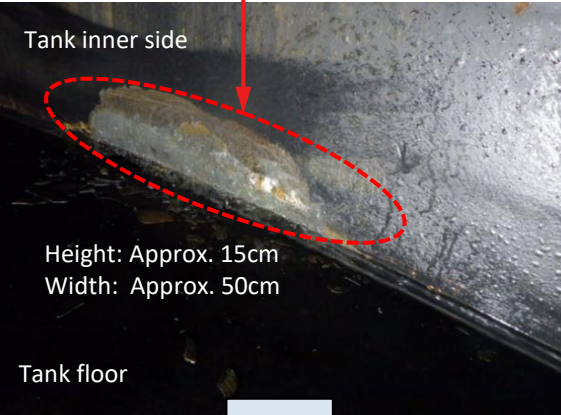
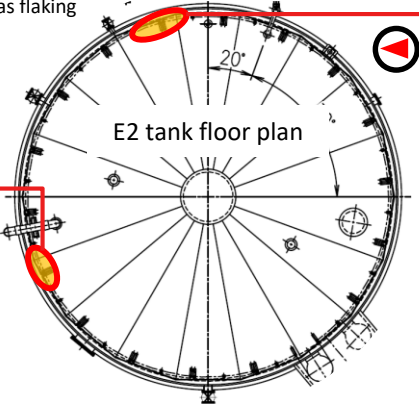


After grinding away the paint

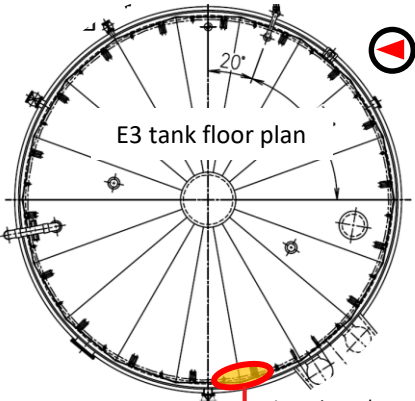


# K4 Area Tank Group E Internal Inspection Implementation Status (E2 tank)

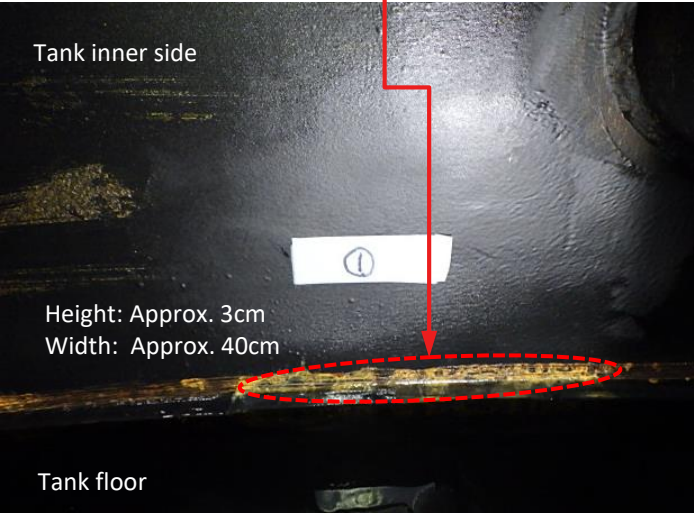
Location where paint was flaking



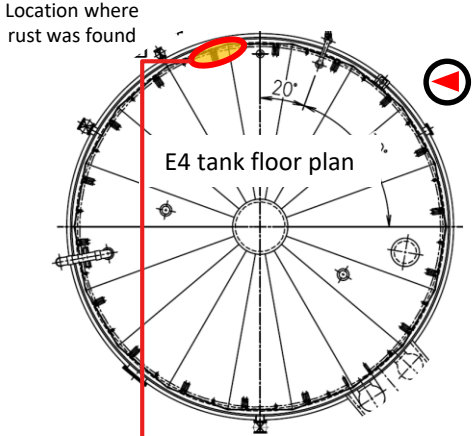
# K4 Area Tank Group E Internal Inspection Implementation Status (E3/E4 tanks)



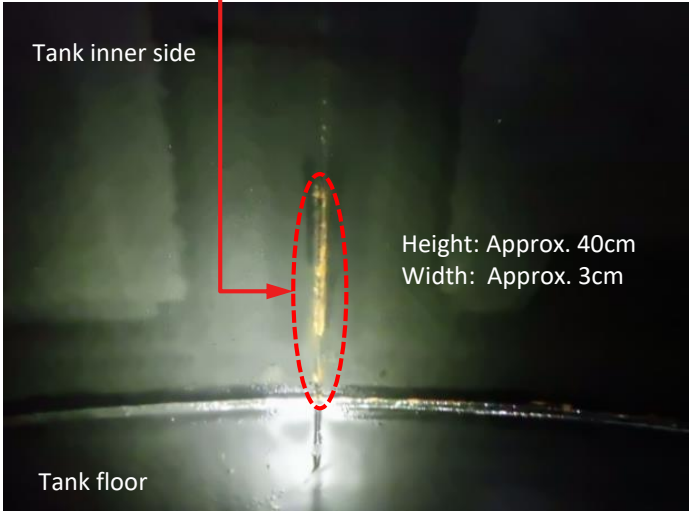
Location where rust was found



\*This area will be repainted because minor rust was found on the surface



Location where rust was found



\*This area will be repainted because minor rust was found on the surface

# K4 Area Tank Group E Internal Inspection Implementation Status (E5 tank)

