

Status of Progress of the installation of ALPS treated water dilution/discharge facility and related facilities

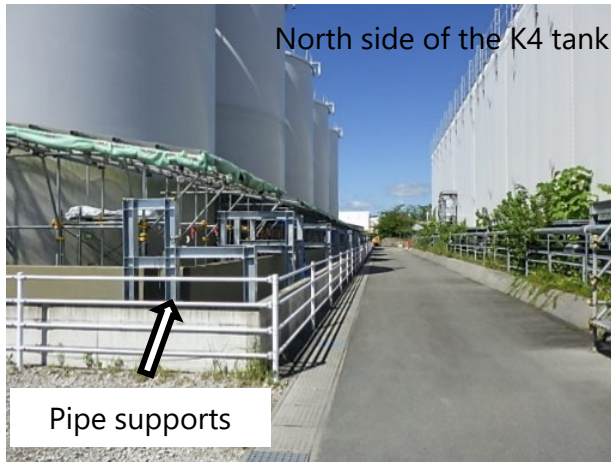


August 25, 2022

Tokyo Electric Power Company Holdings, Inc.

1. Status of construction

- Measurement/confirmation facility and transfer facility
Installation of pipe supports for measurement/confirmation facility and transfer facility began on August 4 from the area around K4 tank area.



Pipe support installation is underway. Approximately 116m of approximately 540m has been installed as of August 23.

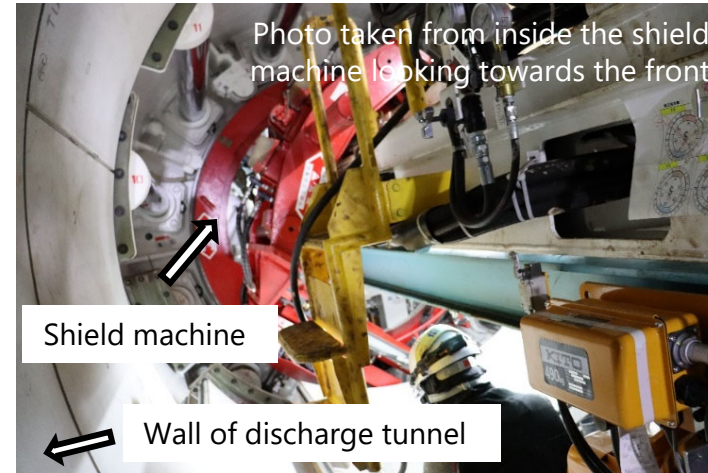
Circulation pipe support installation



Pipe support installation is underway. Approximately 52m of approximately 1,820m has been installed as of August 23.

Transfer pipe support installation

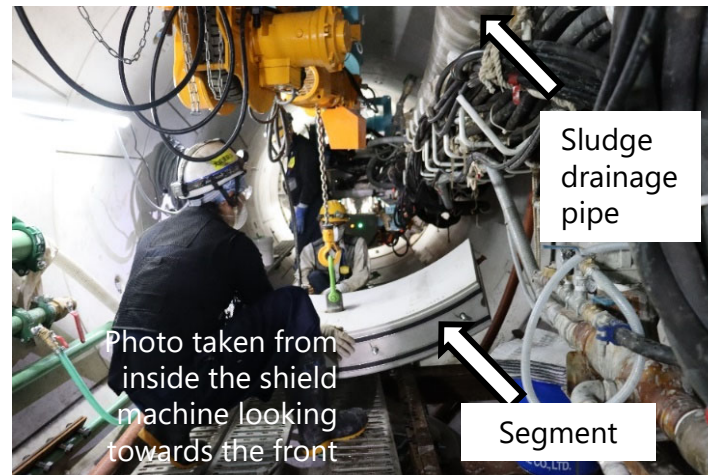
- Discharge facility
On August 4, the shield machine began tunneling through the badrock layer as construction of the discharge tunnel commenced.



Tunnel excavation is underway. Approximately 43m of approximately 1,030m has been installed as of August 24.

※Since the initial excavation (approximately 150m) alternates with the work of connecting the equipment necessary for excavation, the progress of excavation is slower than after the equipment has been connected.

Shield machine excavation work

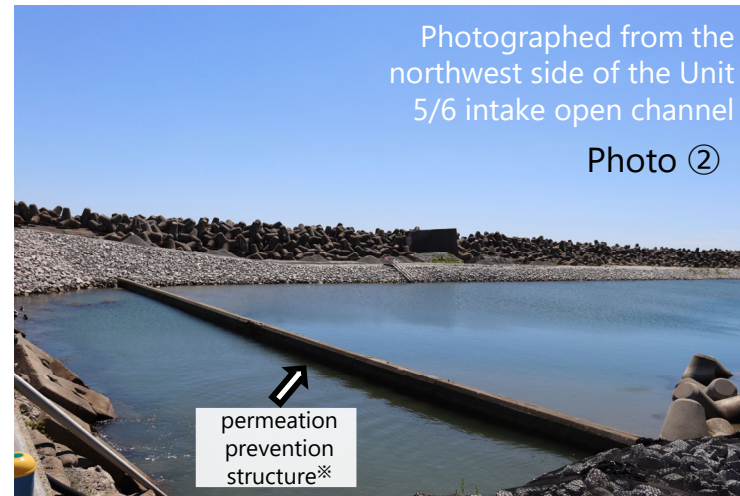
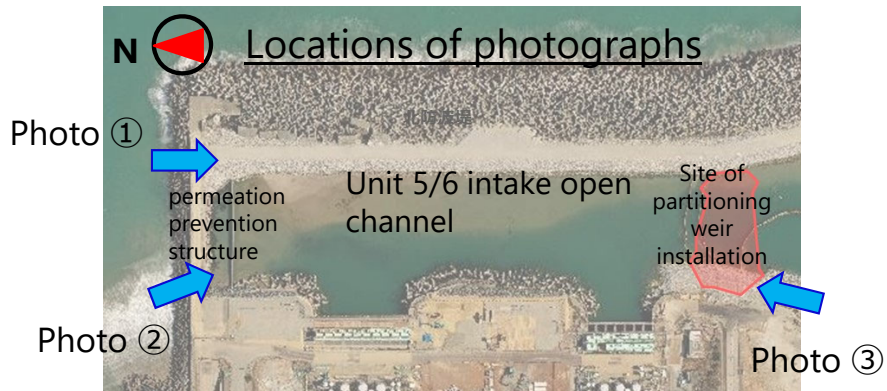


Transferring segments (inside the tunnel)

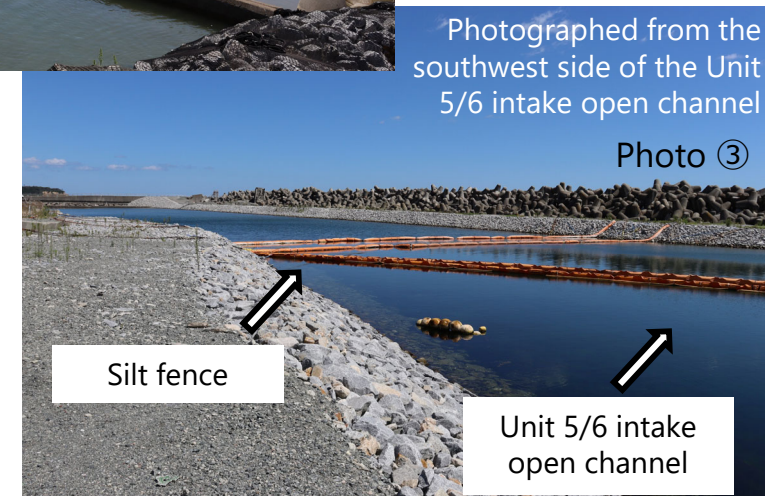
1. Status of construction (cont.)

■ Other construction (building partitioning weir, etc.)

On August 4, construction began on the heavy machinery access road in preparation for the construction of partitioning weir. Going forward, this work will continue simultaneously with the removal of silt deposits from inside the intake open channel in the work area on the sea side of units 5/6. And, after construction of the partitioning weir, the permeation prevention structure will be removed.



※In the future, a portion of the north sea wall permeation prevention structure will be removed in order to enable seawater for dilution to be taken in from outside the harbor.



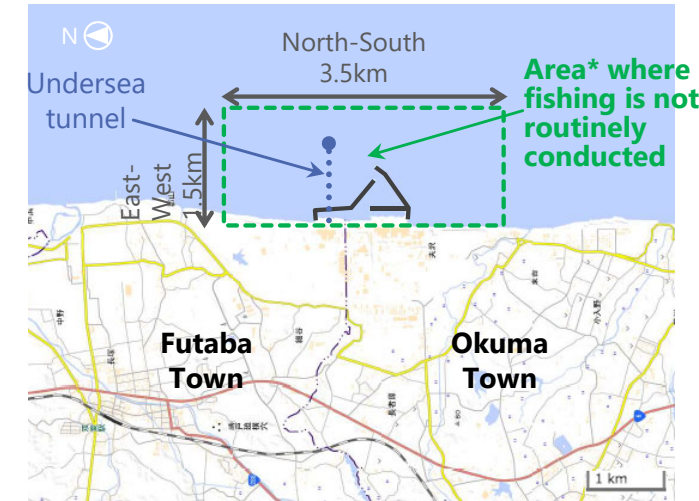
Heavy machinery access road construction

Work area on the sea side of Units 5/6

(Reference) Overview of the ALPS treated water dilution/discharge facility and related facilities



Source: Developed by Tokyo Electric Power Company Holdings, Inc. based on the map developed by the Geospatial Information Authority of Japan (electronic territory web)
<https://maps.gsi.go.jp/#13/37.422730/141.044970/&base=std&ls=std&disp=1&vs=c1j0h0k0l0u0t0z0r0s0m0f1>



*Area where common fishery rights are not set

Measurement/confirmation facility (K4 tank group)

Comprised of three sets of tank groups each with the role of receiving, measurement/confirmation, and discharge. In the measurement/confirmation stage, water that has been made homogenized through circulation and agitating is sampled and analyzed (approx. 10,000m³ × 3 groups)

Secondary treatment facility (newly installed reverse osmosis membrane facility)

Secondary treatment of treated water to be re-purified (sum of the ratios of nuclides, excluding tritium, is between 1 and 10)

Secondary treatment facility (ALPS)

Secondary treatment of Treated water to be re-purified (sum of the ratios of nuclides, excluding tritium, is 1 or higher)

ALPS treated water, etc. tanks

