

<Marine Life Rearing Log>

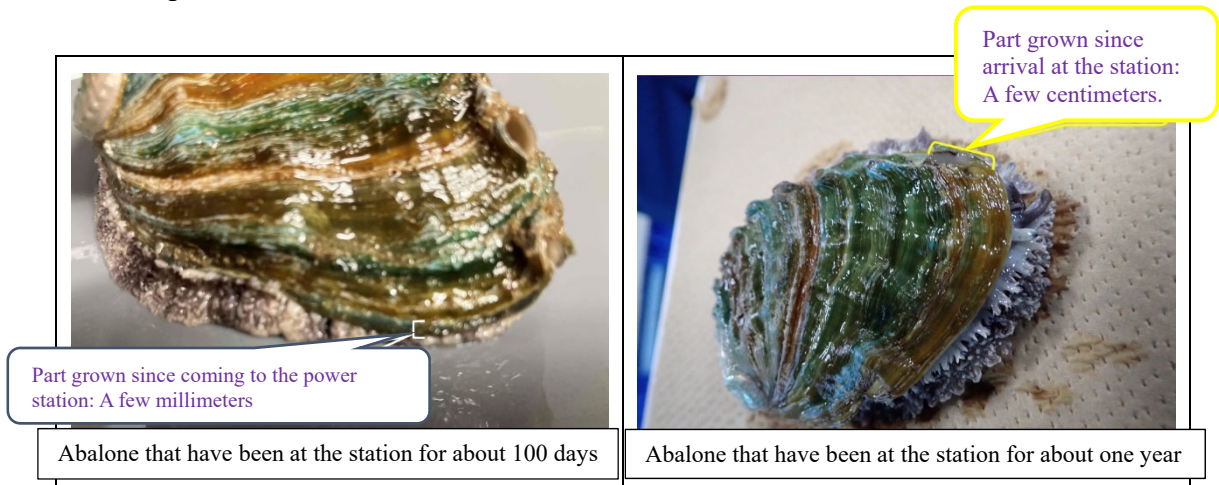
9 AM, October 6, 2023

Weather: Sunny

Water temperature: 17.7°C

We have previously reported that the growth of abalone can be measured by the stripes on their shells. The color of the shell also indicates what the abalone has eaten. We checked the shells of abalone that survived and grew to be large, and found that they've grown about 2cm.

<Next report will be on October 10>



アワビの死亡および調査引き上げ数

	死亡		調査引き上げ	
	9/29-10/5 (数)	生残率(%、累積)	9/29-10/5 (数)	累積 (数)
通常海水①	2	59.4	0	0
通常海水②	5	45.8	0	0
処理水添加①	0	53.6	0	0
処理水添加②	3	46.8	0	1

*ヒラメの死亡はありませんでした
*集計に正確を期すため前週金曜～木曜日で死亡および調査引き上げ数を集計しています

The number of dead abalone / removed for research

	No. of dead abalone		Removed for research	
	9/29-10/05 (No.)	Survival Rate (%、accumulated)	9/29-10/05 (No.)	Accumulated (No.)
Regular seawater ①	2	59.4	0	0
Regular seawater ②	5	45.8	0	0
ALPS water added ①	0	53.6	0	0
ALPS water added ②	3	46.8	0	1

- * No flounder deaths
- * For accuracy, counted from Friday of the previous week to Thursday