

<Marine Organism Rearing Log>

9 AM, October 19, 2022

Weather: Cloudy

Water temperature: 19.5°C

We will start rearing test of abalones next week. Prior to rearing test, we practiced preprocessing of analysis (removal of inedible parts such as shell). All the body parts other than mouth, digestive system, and shell will be analyzed. Now, residual organs divided opinions among caretakers such as “are guts of abalones edible or not”.



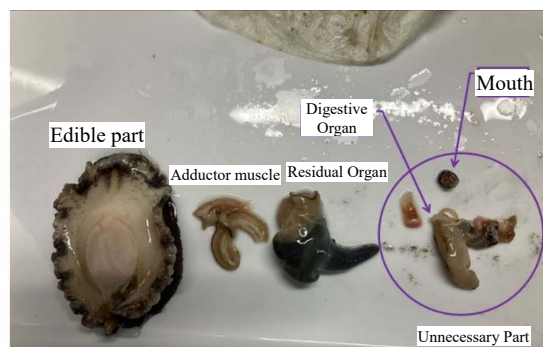
□ Clamp an abalone firmly



② Dissect adductor without damaging organ



③ Removal of shell then carving edible part.



④ Carved edible parts out.
Dispose its mouth and digestive organ