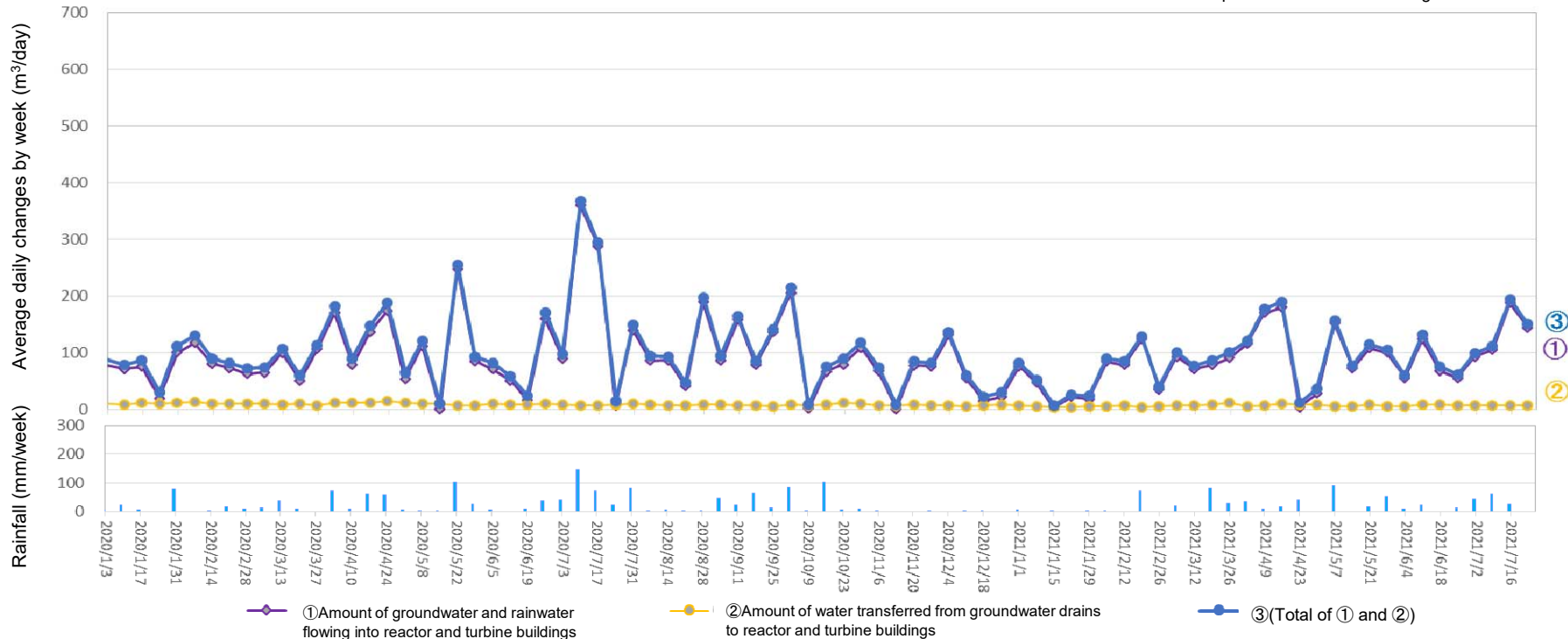


## Changes in the amount of water transferred from groundwater drains to reactor and turbine buildings and in the amount of groundwater and rainwater flowing into the buildings

\* Graph shows data from last eighteen months.



Amount of water transferred from groundwater drains to reactor and turbine buildings  
 (From July 15, 2021 to July 21, 2021)

Date	Temporary storage tanks			
	A	B	C	Total (α)
From Jul 15 to Jul 21	0	0	0	0

(Reference) improved wells and well points				(Reference) Amount of water transferred to turbine buildings [(α)+(β)]
Between Units 1-2	Between Units 2-3	Between Units 3-4	Total (β)	
7	0	0	7	7

\* ①Amount of groundwater and rainwater flowing into reactor and turbine buildings: 144 m<sup>3</sup>/day, ②Amount of water transferred from groundwater drains to reactor and turbine buildings: 7 m<sup>3</sup>/day, ③(Total of ① and ②): 151 m<sup>3</sup>/day, Rainfall: 0 mm/week

\* There are cases where there is a difference between the sum of each number on the table above and the "total" because the "total" is the sum of numbers with one digit after the decimal point.

(Reference) Changes in the amount of water transferred from groundwater drains to reactor and turbine buildings and in the amount of groundwater and rainwater flowing into the buildings from the start of measurement

