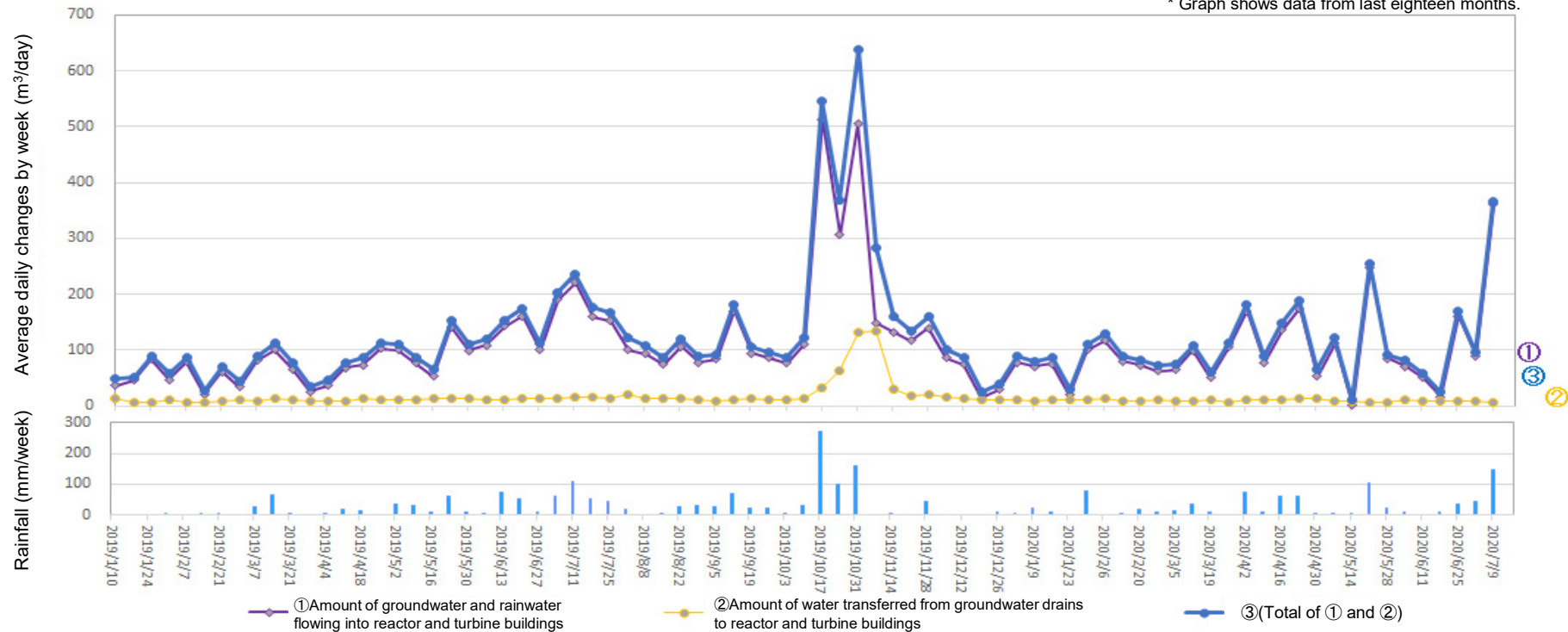


Changes in the amount of water transferred from groundwater drains to reactor and turbine buildings and in the amount of groundwater and rainwater flowing into the buildings

* Graph shows data from last eighteen months.



Amount of water transferred from groundwater drains to reactor and turbine buildings
 (From Jul 2, 2020 to Jul 8, 2020)

Date	Temporary storage tanks			
	A	B	C	Total (α)
From Jul 2 to Jul 8	0	0	0	0

(Reference) improved wells and well points				(Reference) Amount of water transferred to turbine buildings [(α)+(β)]
Between Units 1-2	Between Units 2-3	Between Units 3-4	Total (β)	
7	0	0	7	7

* ① Amount of groundwater and rainwater flowing into reactor and turbine buildings: 360m³/day, ② Amount of water transferred from groundwater drains to reactor and turbine buildings: 7m³/day, ③ (Total of ① and ②): 367m³/day, Rainfall: 145mm/week

* There are cases where there is a difference between the sum of each number on the table above and the "total" because the "total" is the sum of numbers with one digit after the decimal point.

(Reference) Changes in the amount of water transferred from groundwater drains to reactor and turbine buildings and in the amount of groundwater and rainwater flowing into the buildings from the start of measurement

