

Sampling place related to groundwater bypass drainage at the Fukushima Daiichi Nuclear Power Station

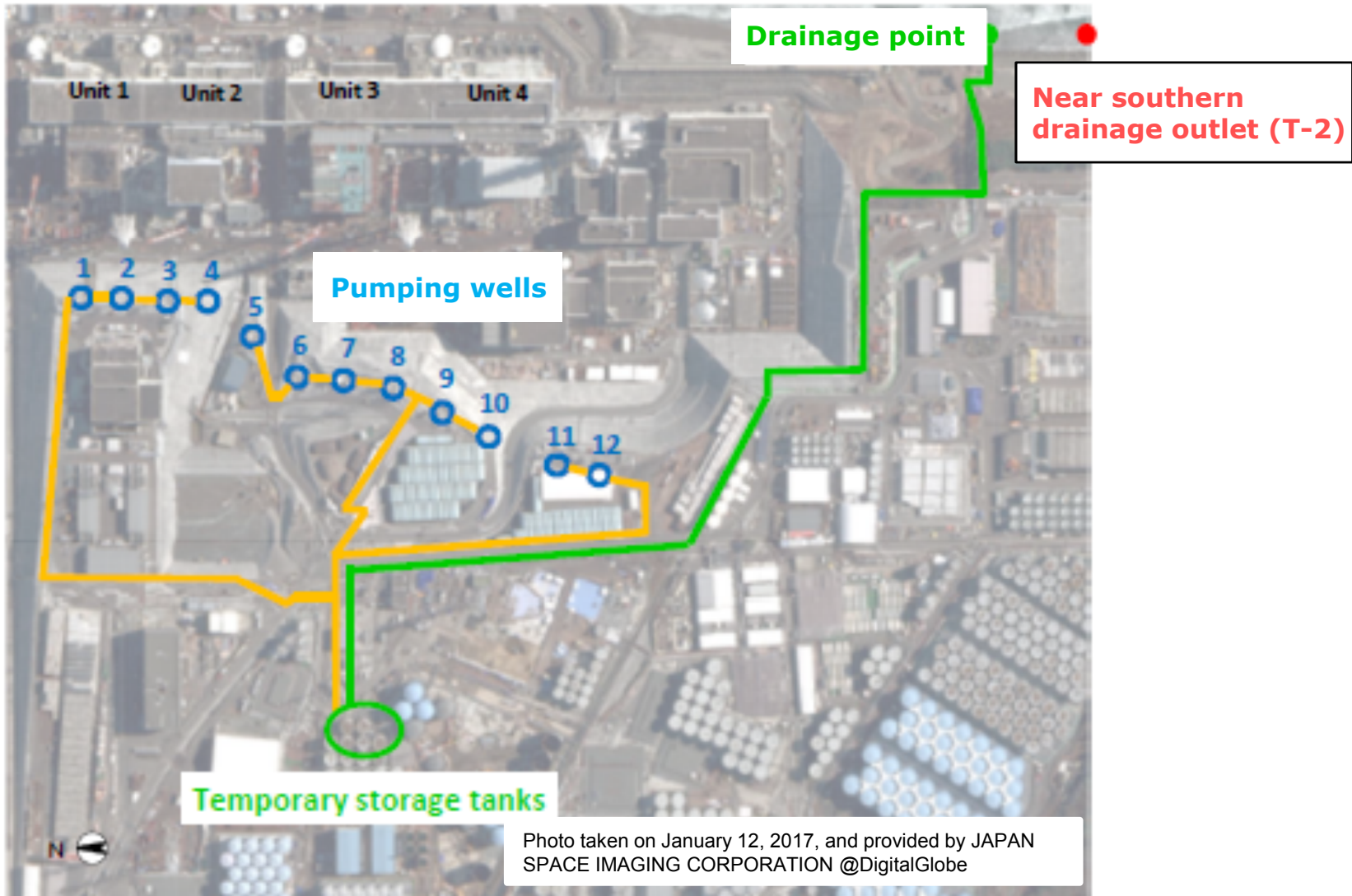


Photo taken on January 12, 2017, and provided by JAPAN SPACE IMAGING CORPORATION @DigitalGlobe

[Date]

Tokyo Electric Power Company Holdings, Inc.
Fukushima Daiichi D&D Engineering Company

Analysis Results of Seawater during Drainage from Temporary Storage Tanks for the Groundwater Bypass

Place of Sampling	Date and Time of Sampling	Analysis Item			
		Gross β (Bq/L)	H-3 (Bq/L)	Cs-134 (Bq/L)	Cs-137 (Bq/L)
Near Southern Drainage Outlet ^{※1} (T-2), 1F					

- Half life of each nuclide: H-3 (Approx. 12 years), Cs-134 (Approx. 2 years), Cs-137 (Approx. 30 years)
- Inequality sign (<: less than) indicates that measurement result is less than the detection limit (ND).
- Values are expressed in exponential notation. For example, "3.1E+01" means "3.1×10¹" and equals 31. Similarly, "3.1E+00" means "3.1×10⁰" and equals 3.1, and "3.1E-01" means "3.1×10⁻¹" and equals 0.31.
- Seawater is sampled during drainage from temporary storage tanks for the groundwater bypass.

※1 Approx. 320 m south from Unit 1-4 Drainage Outlet