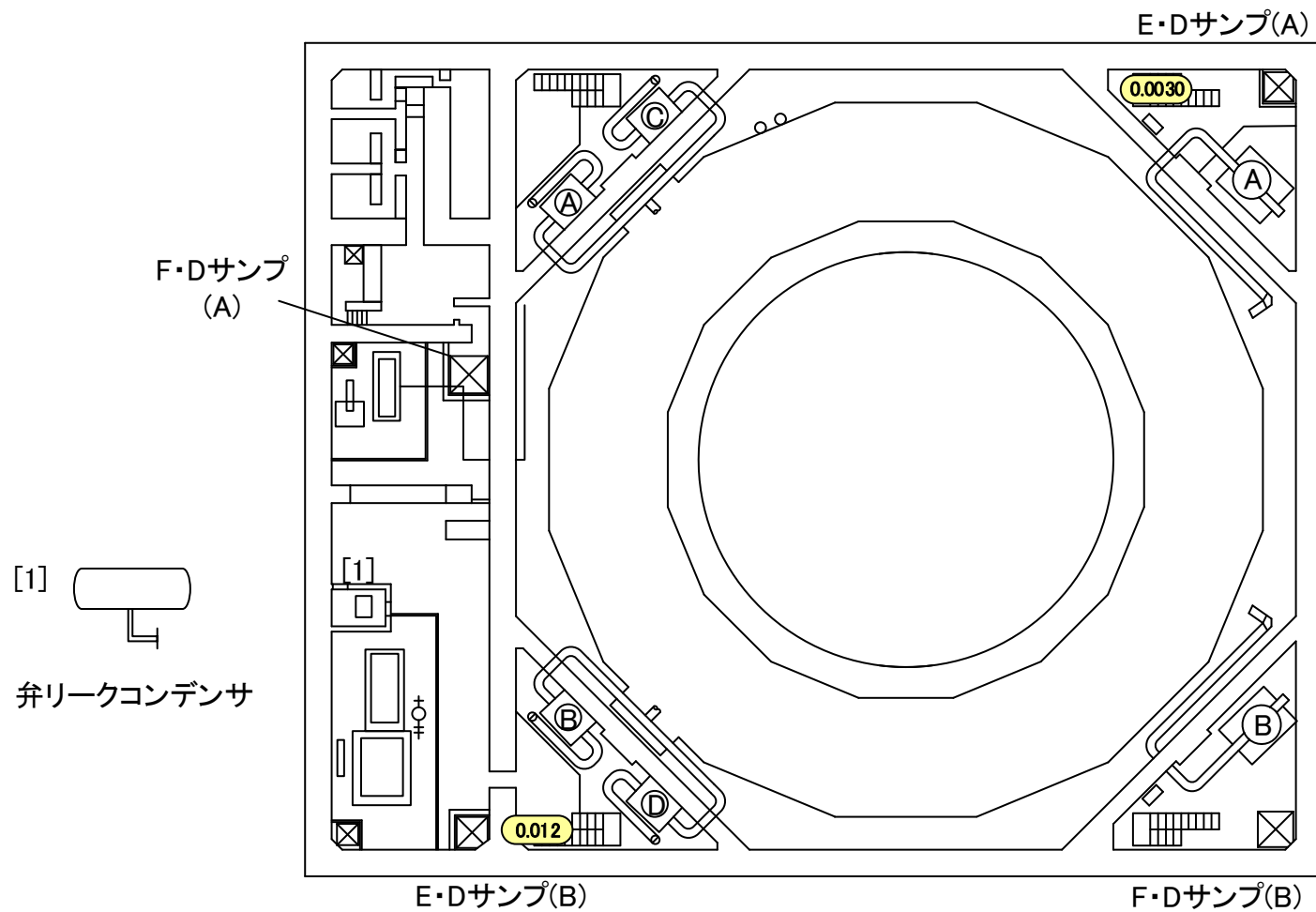


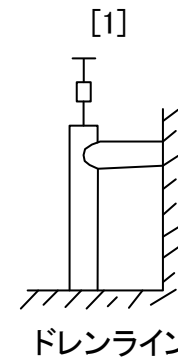
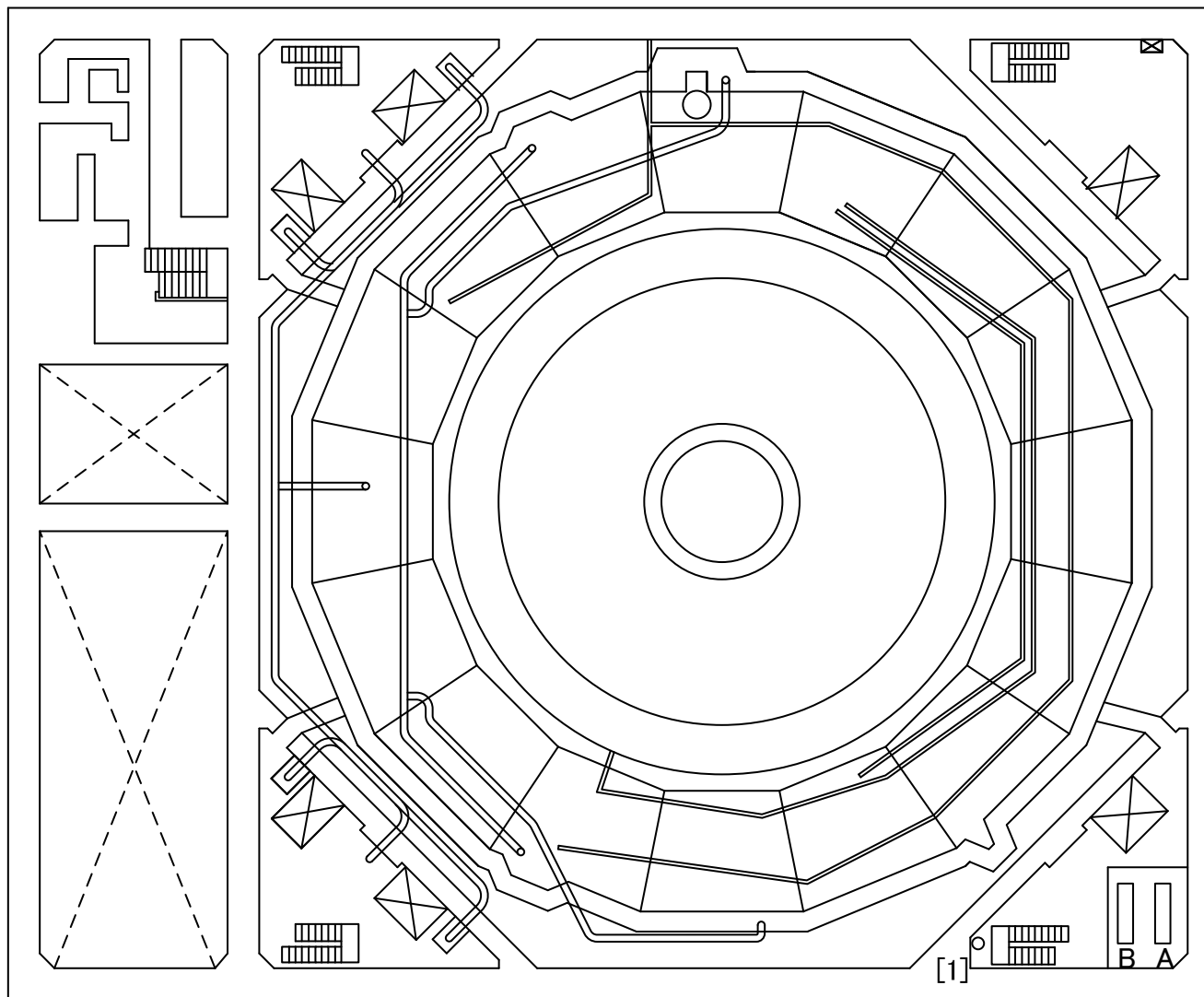
2017年1月31日
東京電力ホールディングス株式会社

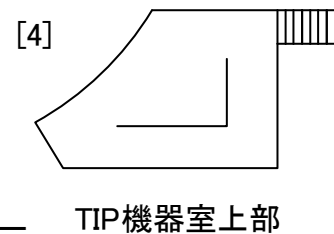
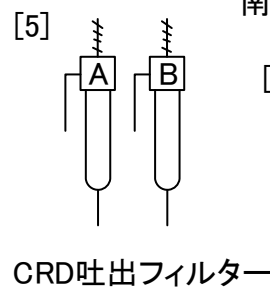
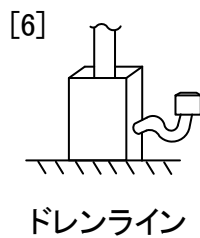
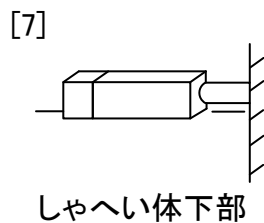
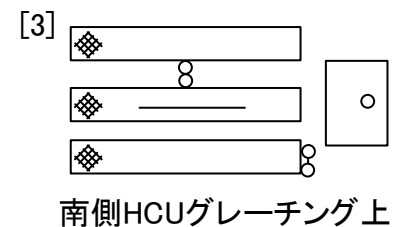
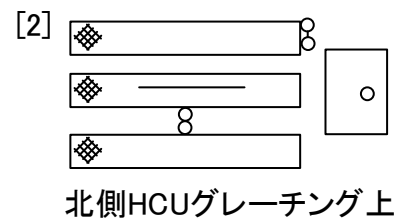
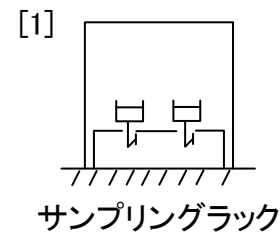
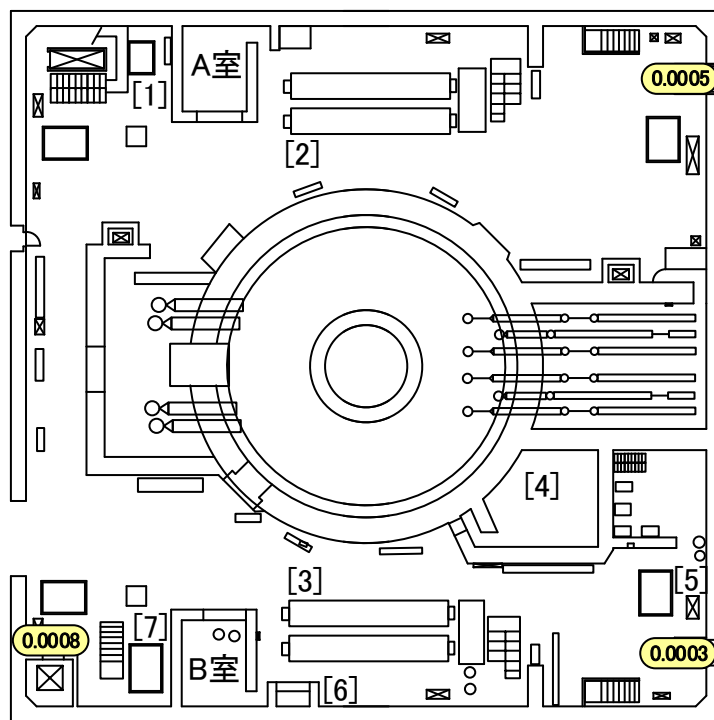
建屋内の空間線量率について

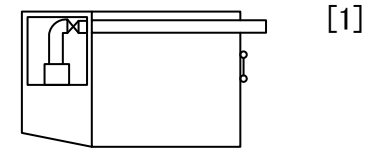
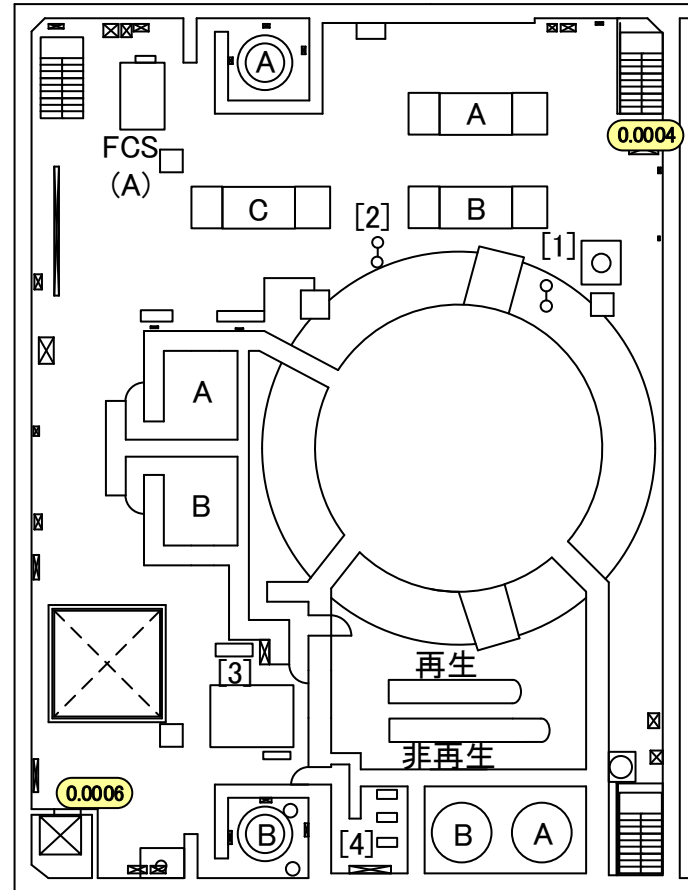
データ採取期間

- ・ 5号機 : 2016年11月1日～2016年11月30日

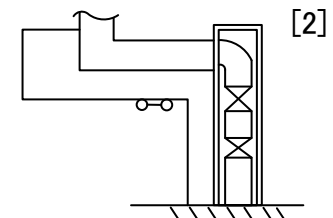




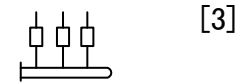




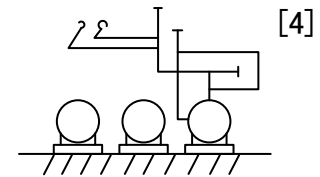
北東側グレーチング上



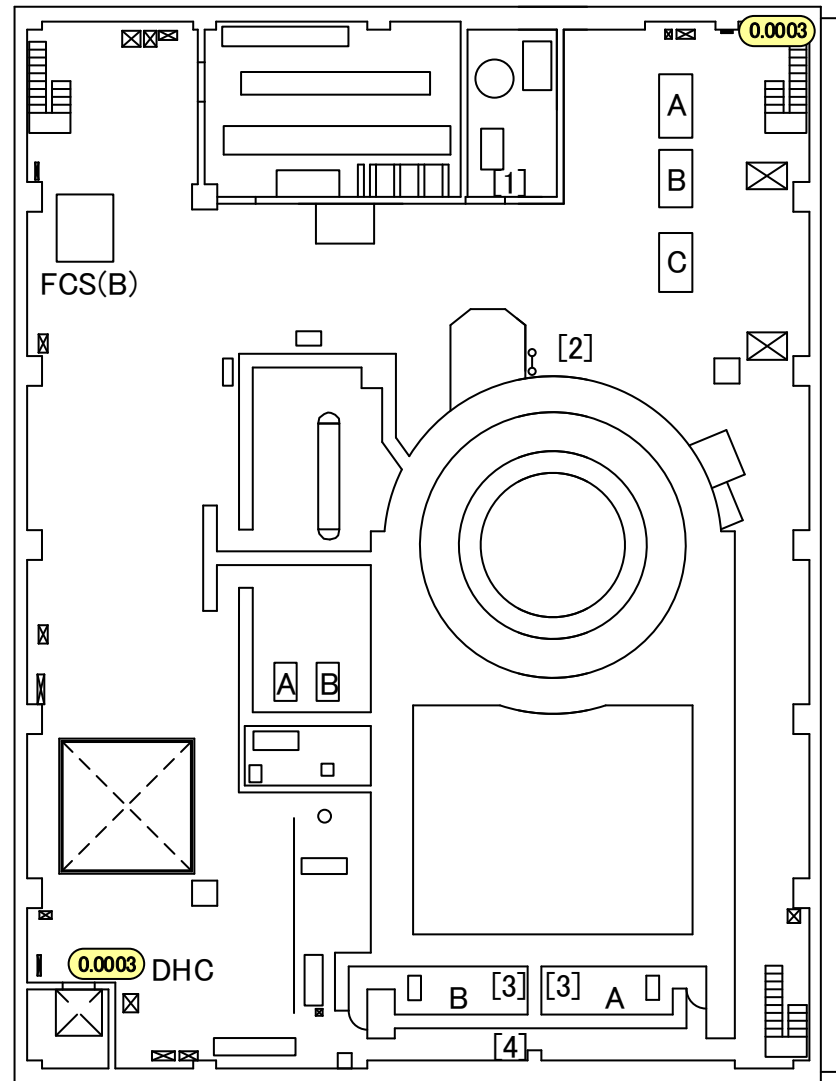
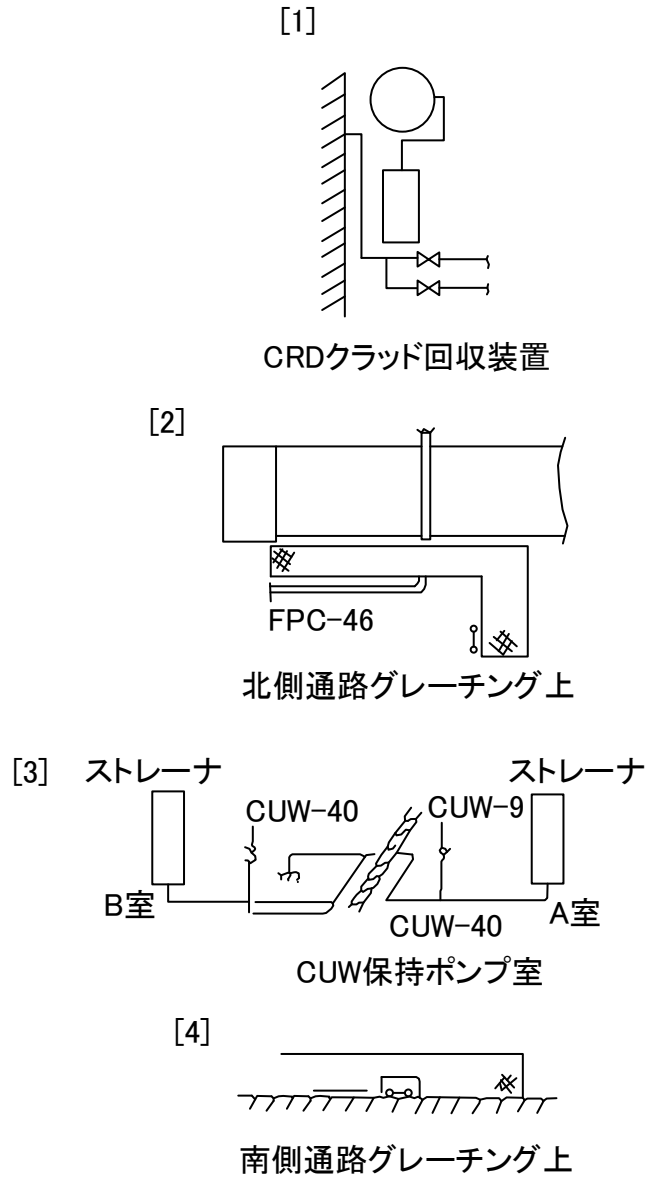
北側グレーチング上

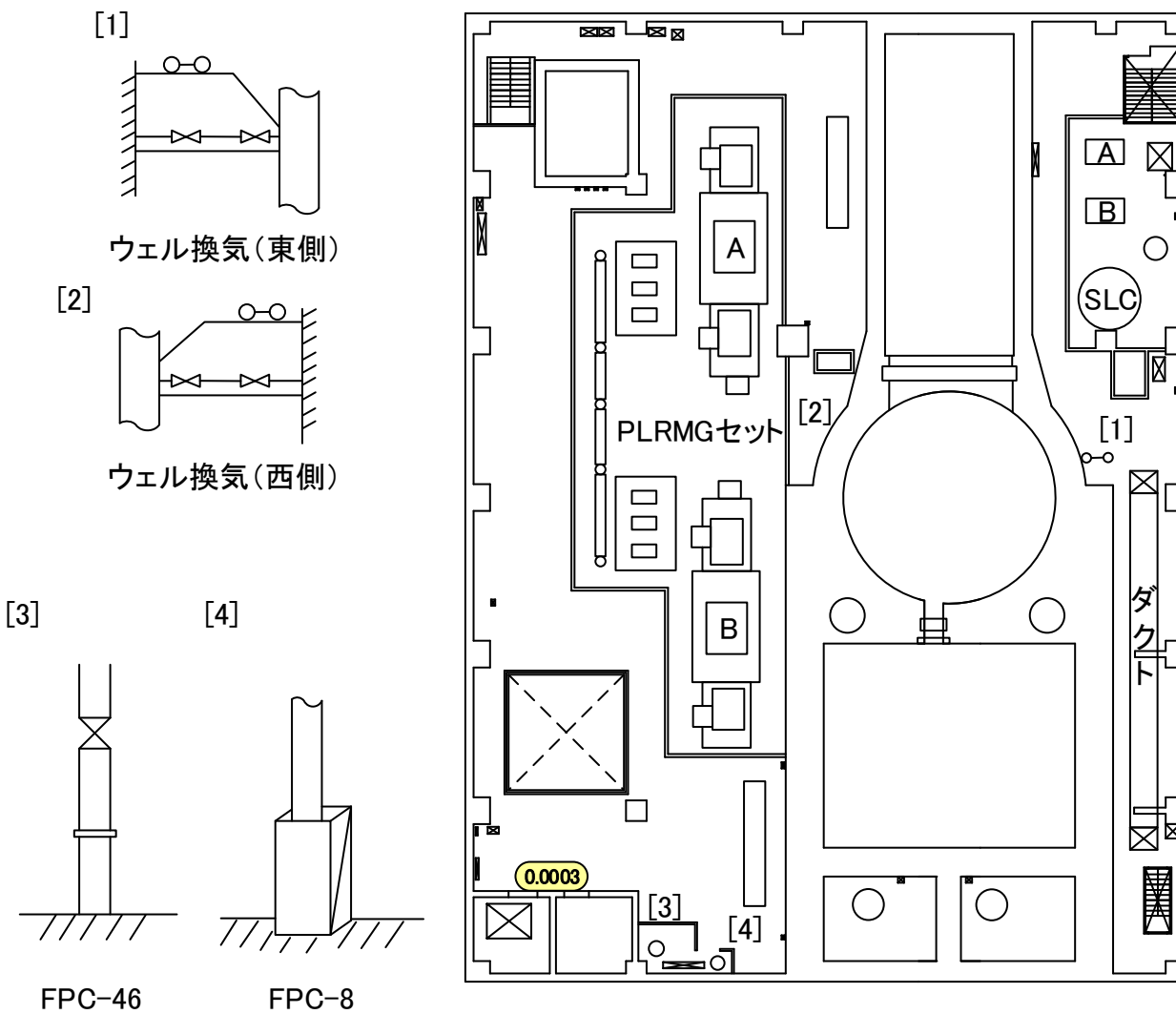


計装ラック下部



スラッジ放出混合ポンプ



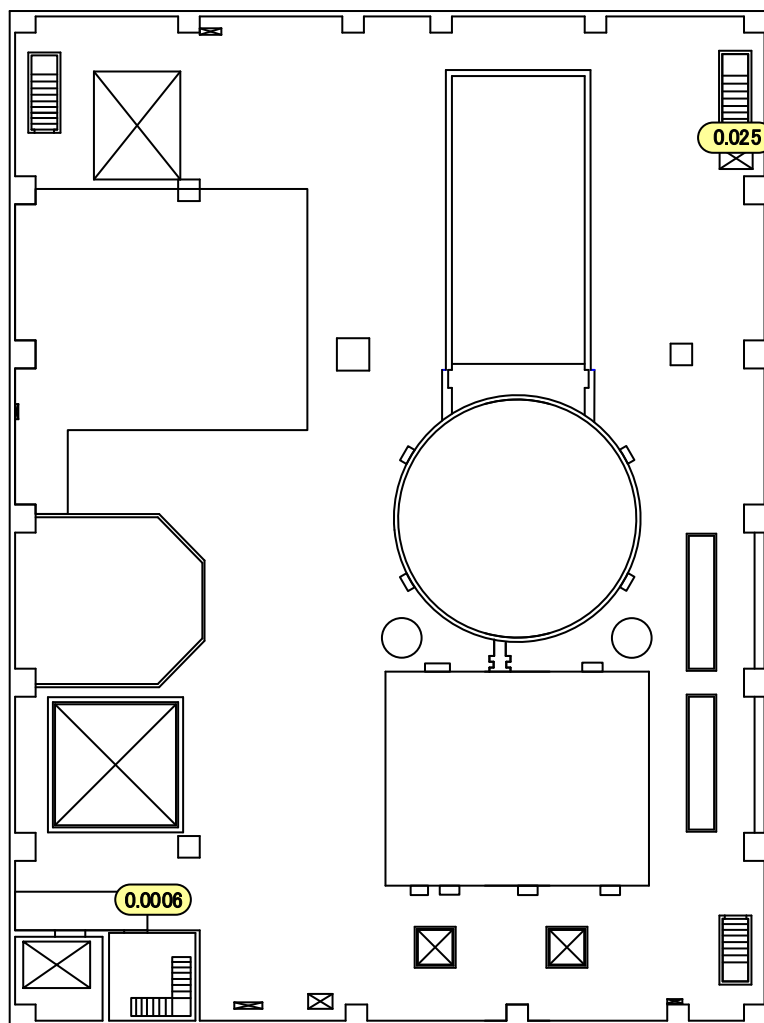


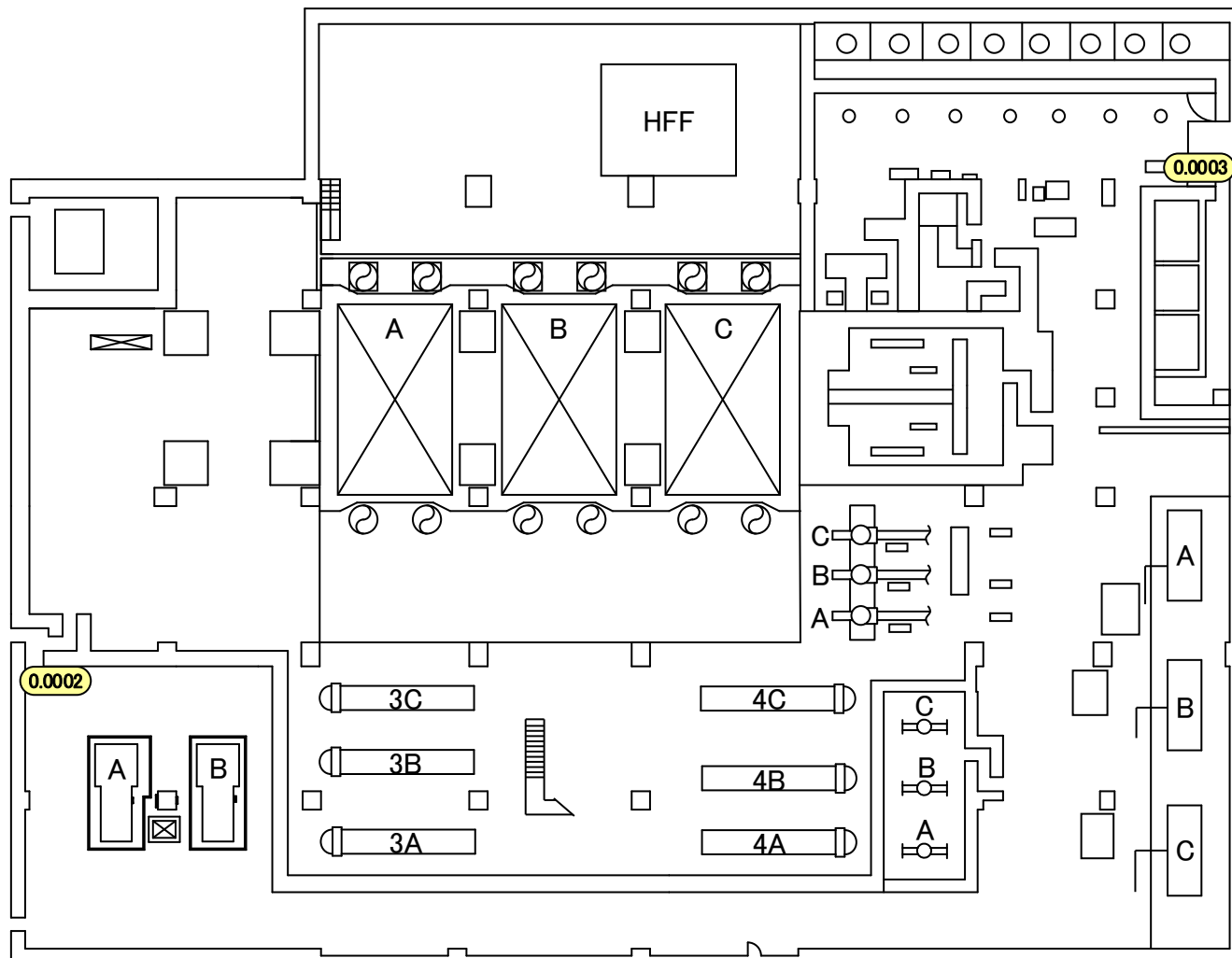
福島第一 原子力発電所

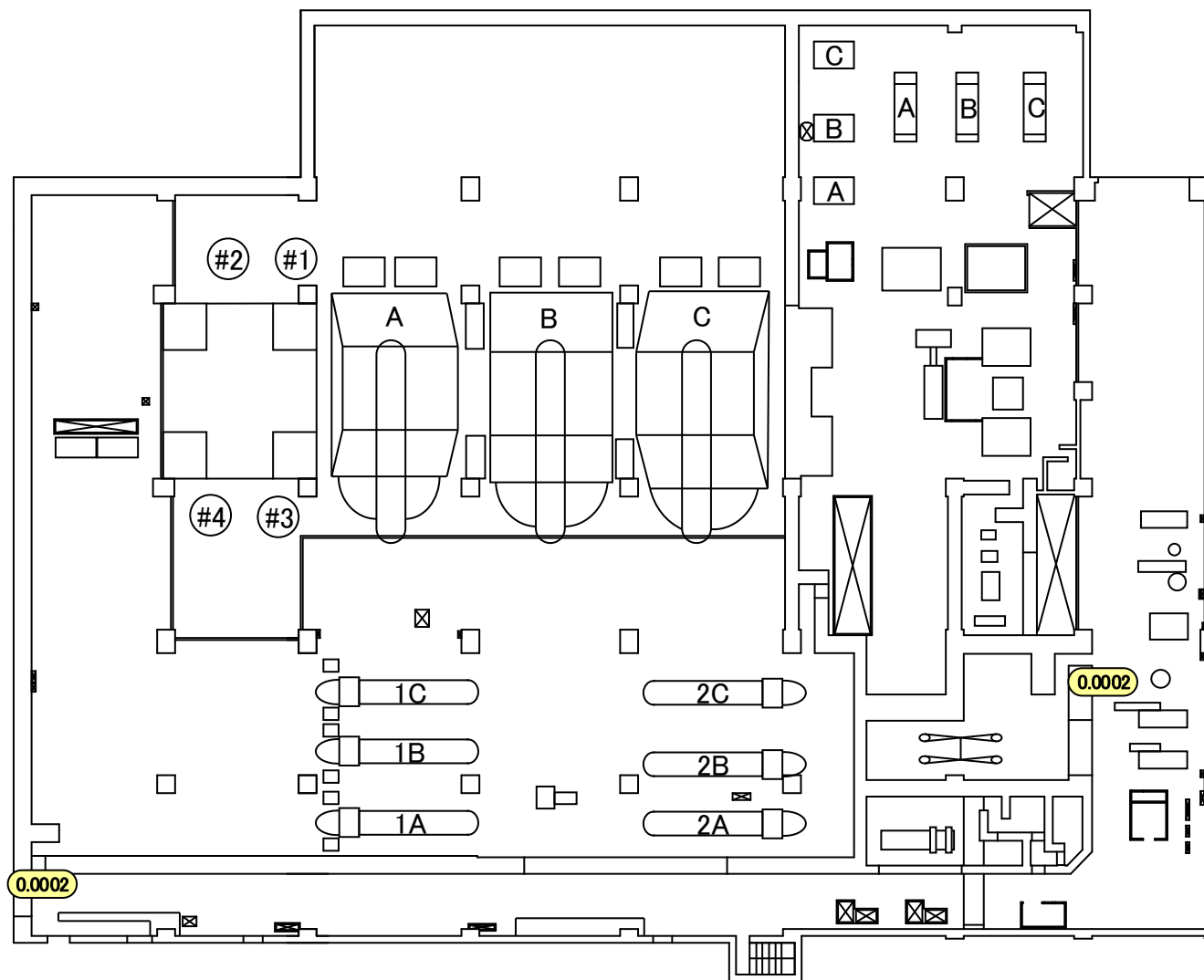
図面名称:

5号機 原子炉建屋 5階

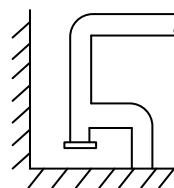
[単位: mSv/h]



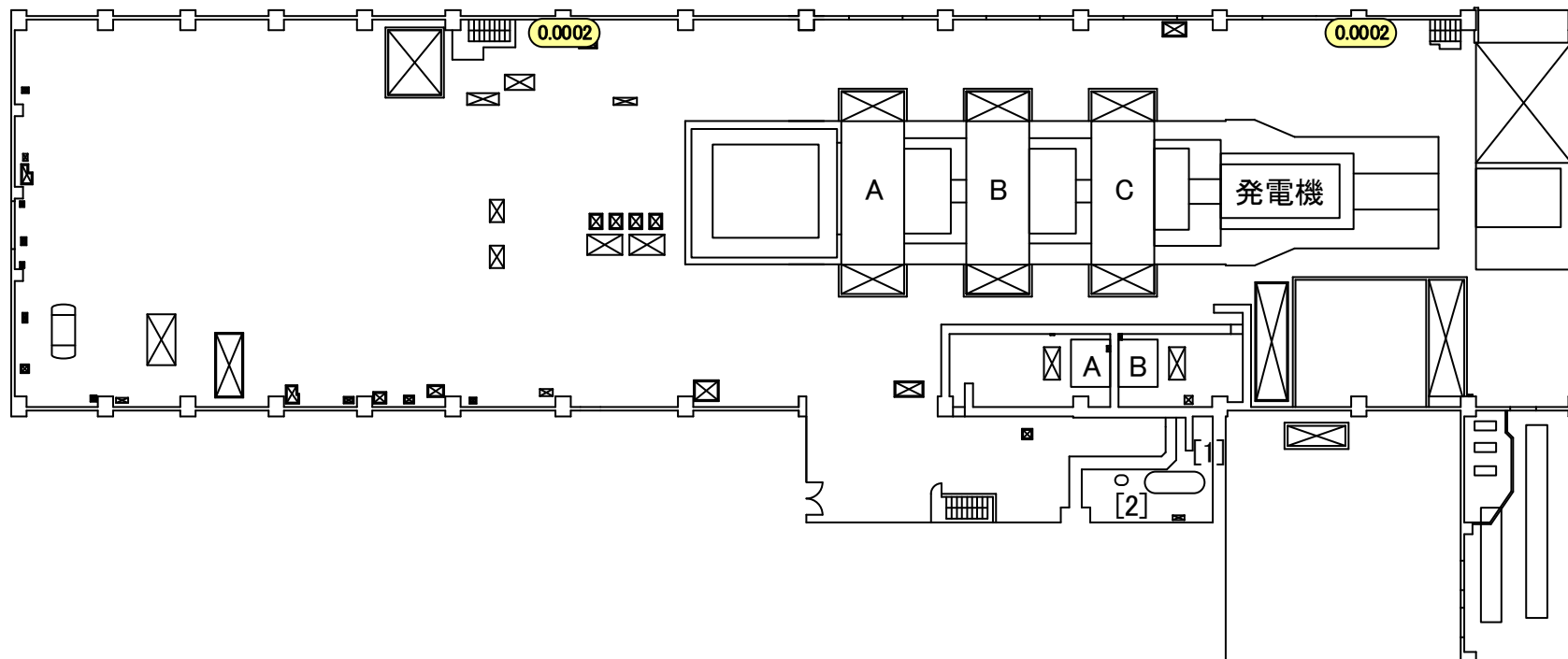
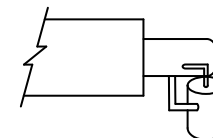


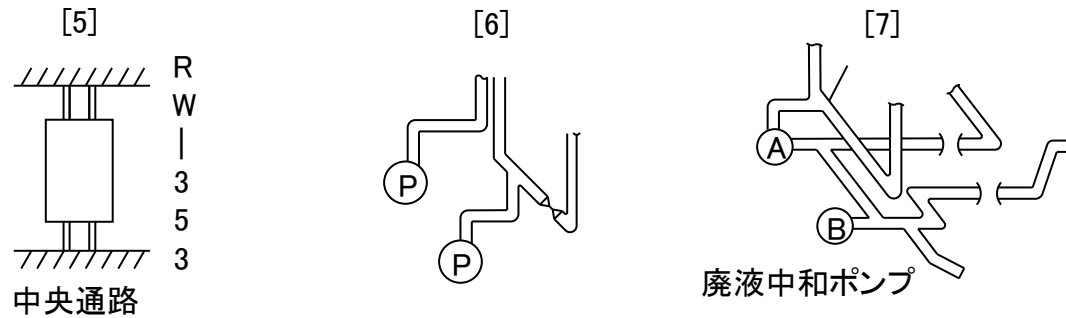
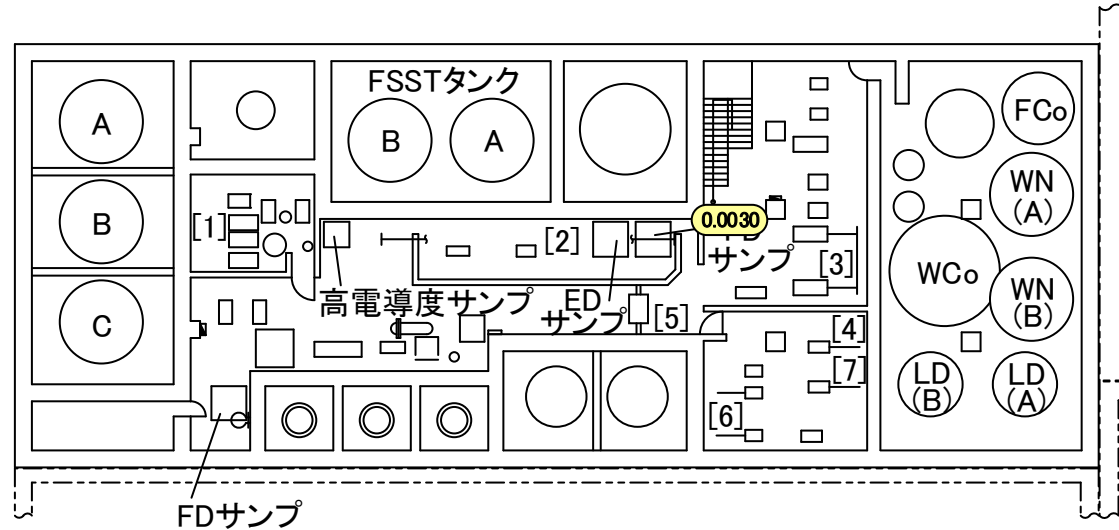
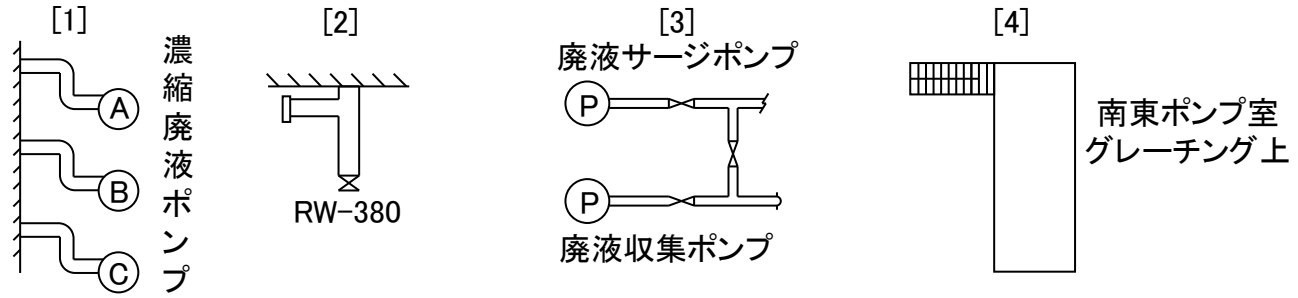


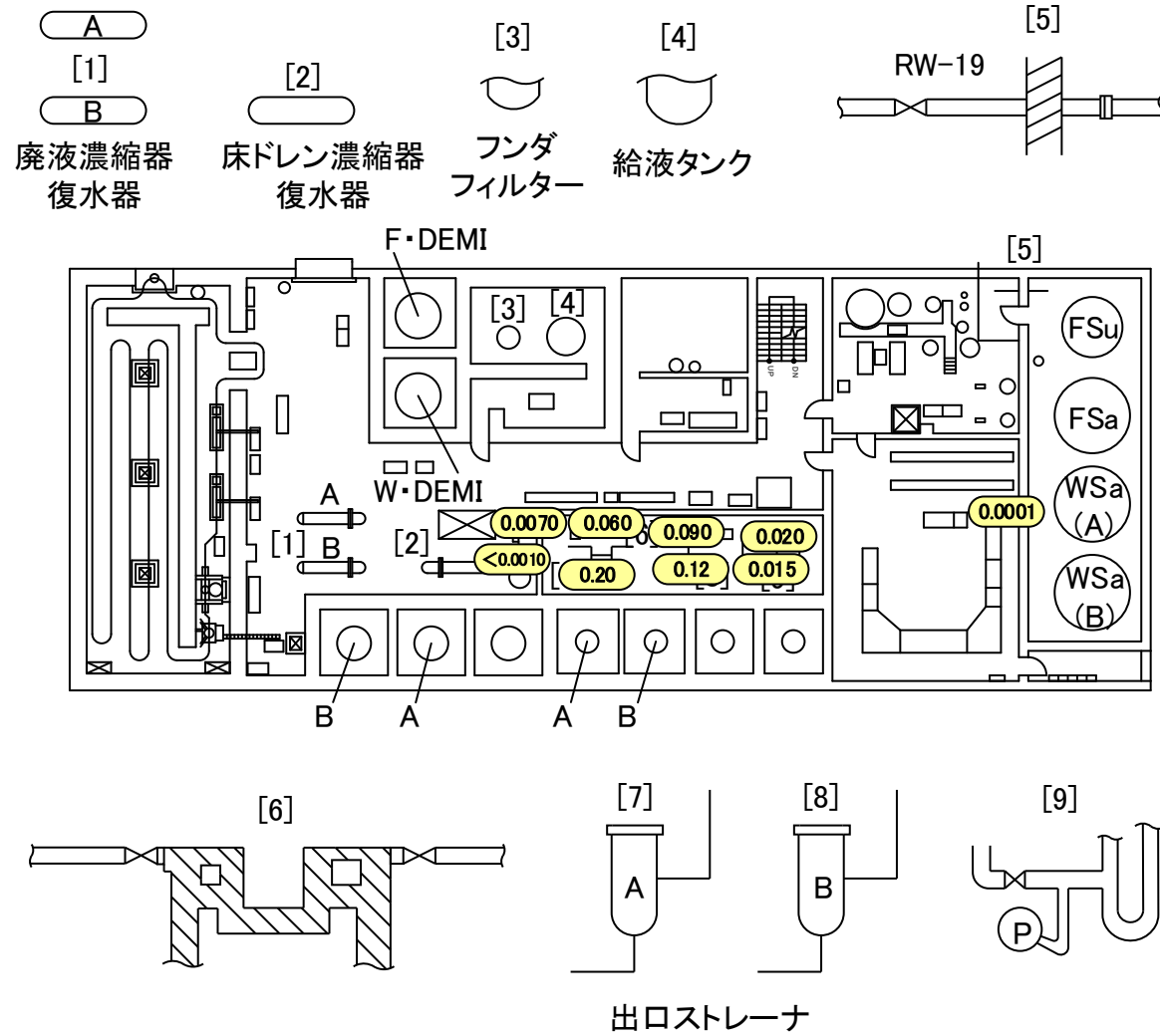
[1]
AS-23

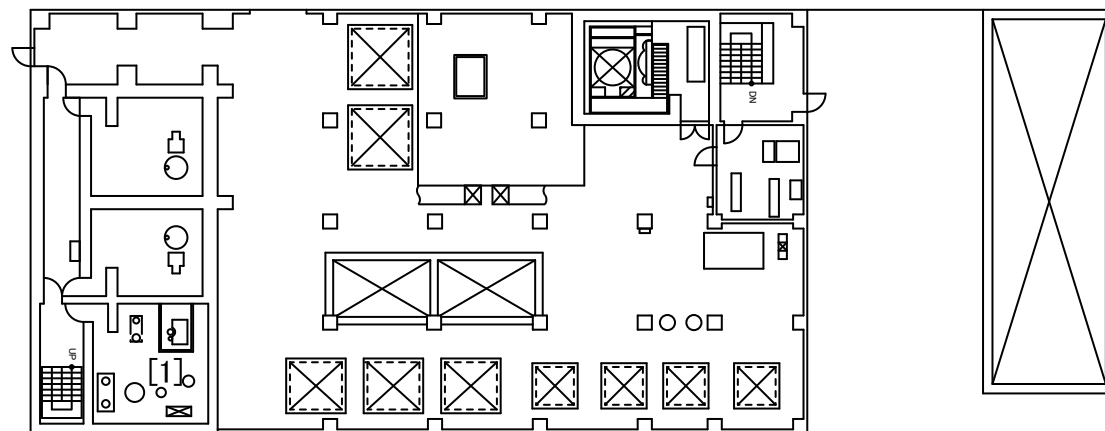


[2]
エバポレータ









[1]



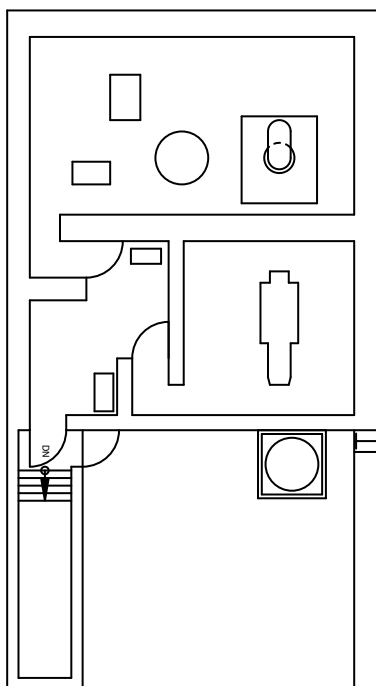
濃縮廃液計量タンク

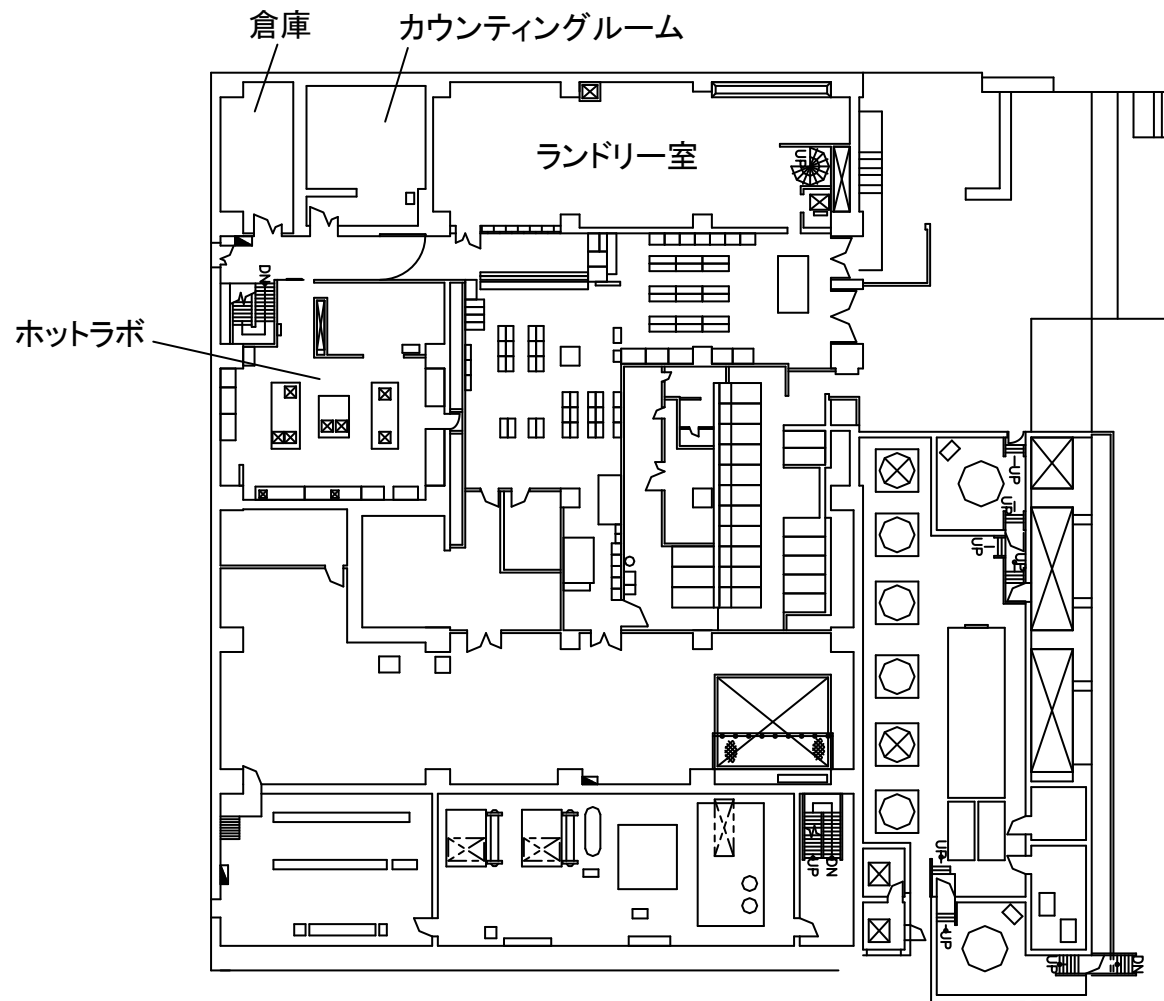
福島第一 原子力発電所

図面名称:

5号機 廃棄物処理建屋 3階

[単位: mSv/h]





福島第一 原子力発電所

図面名称:

5・6号機 サービス建屋 2階

[単位: mSv/h]

