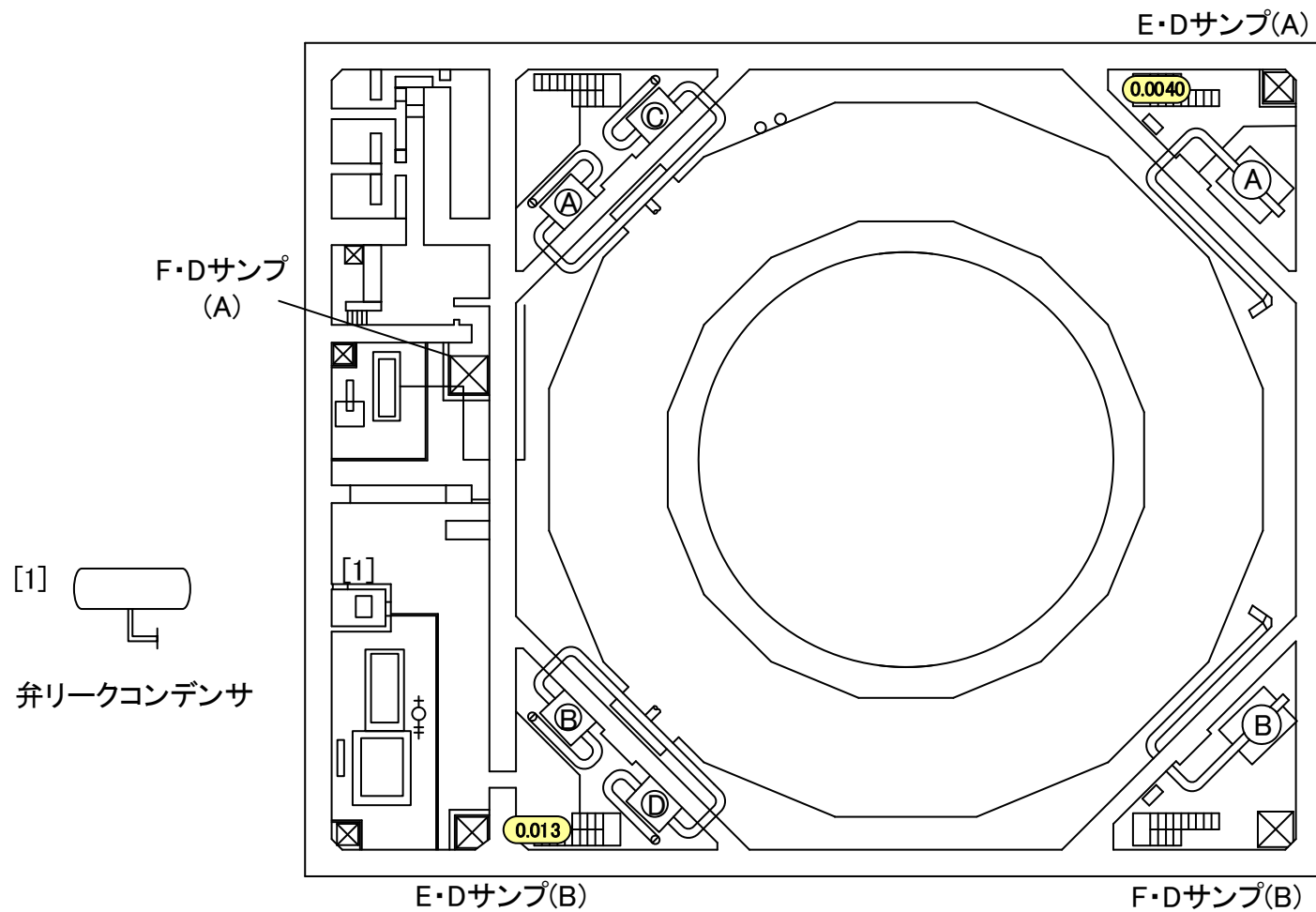


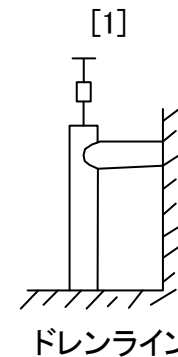
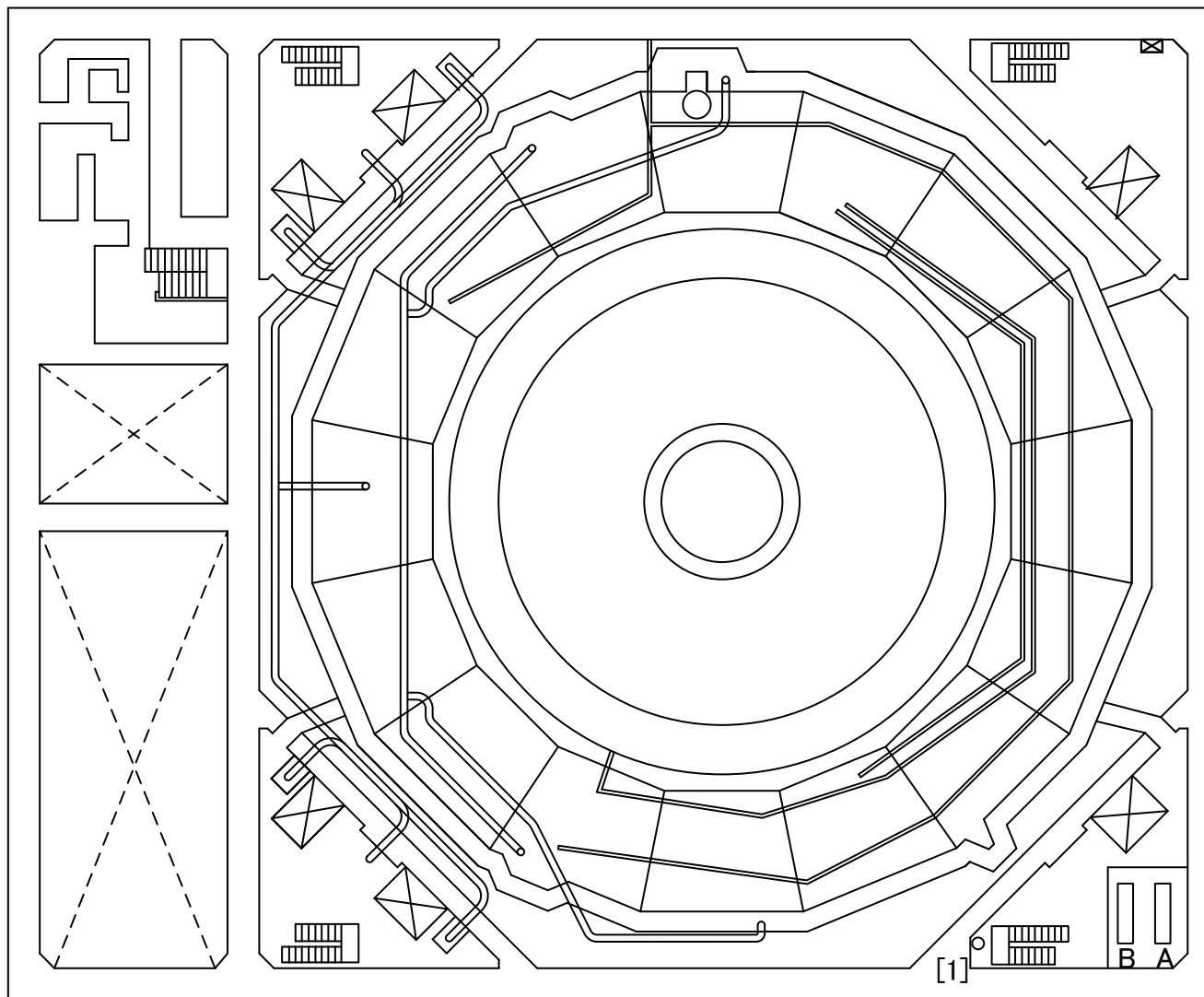
2016年5月31日
東京電力ホールディングス株式会社

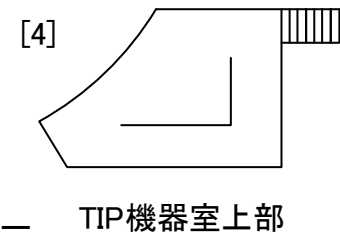
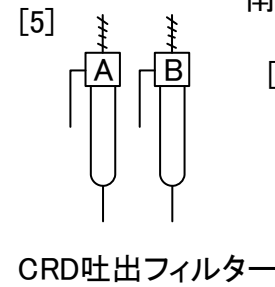
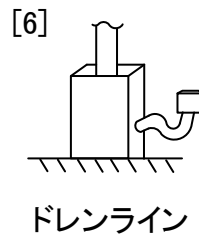
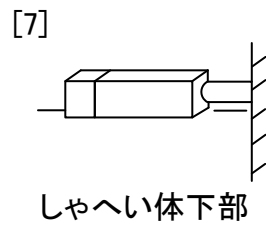
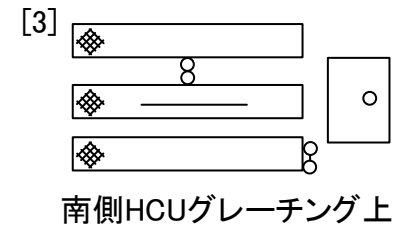
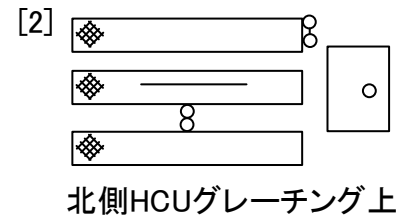
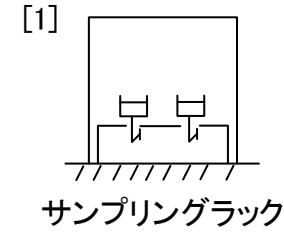
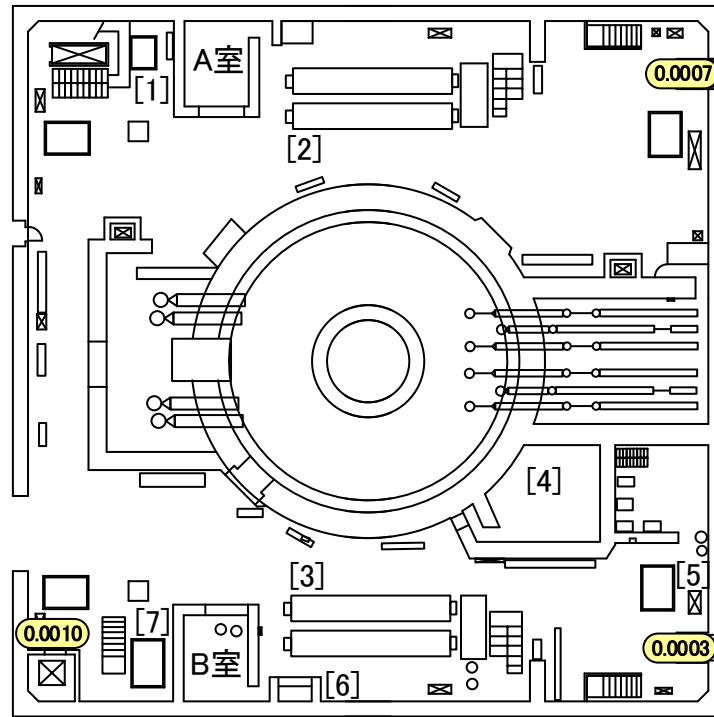
建屋内の空間線量率について

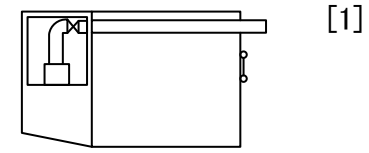
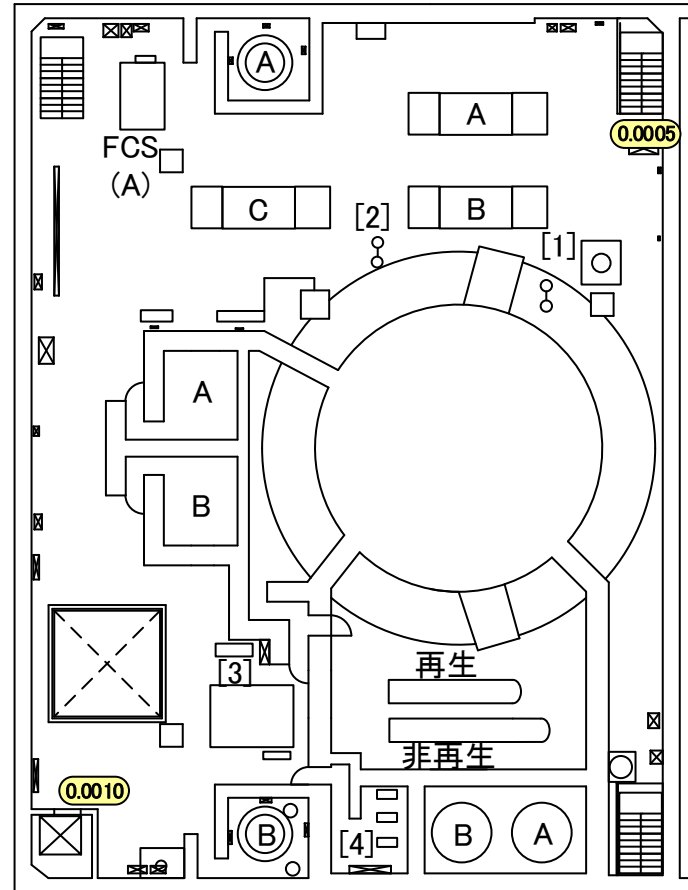
データ採取期間

- ・ 5号機 : 2016年3月1日～2016年3月31日

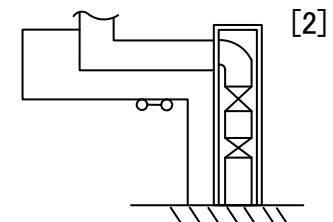




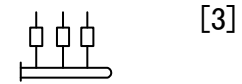




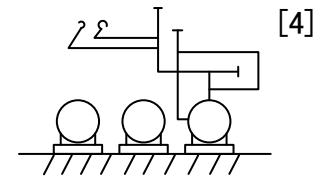
北東側グレーチング上



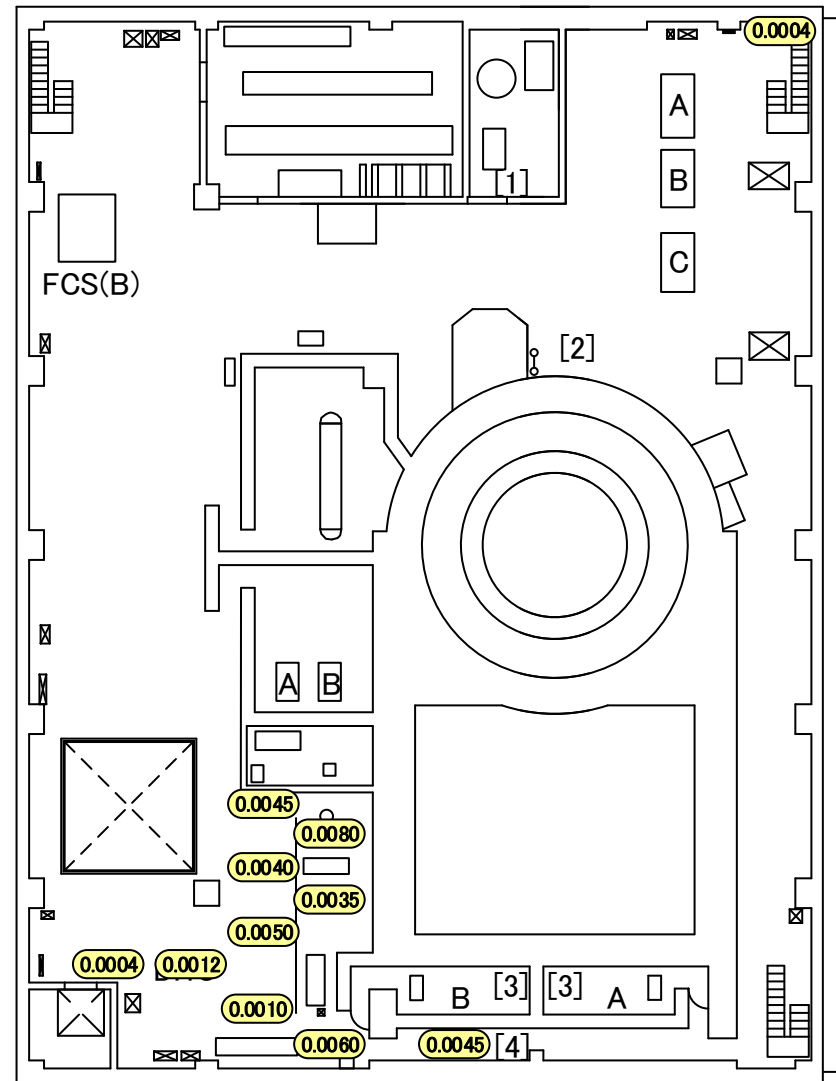
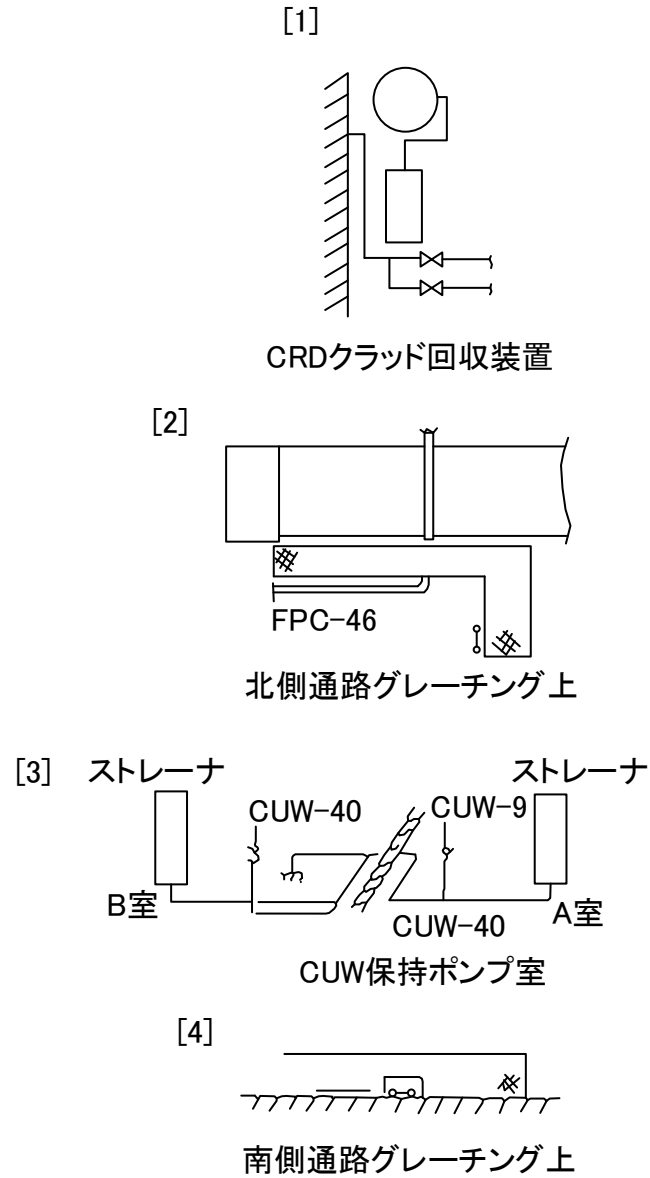
北側グレーチング上



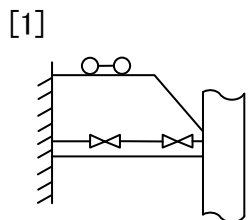
計装ラック下部



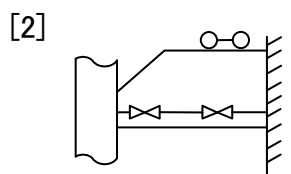
スラッジ放出混合ポンプ



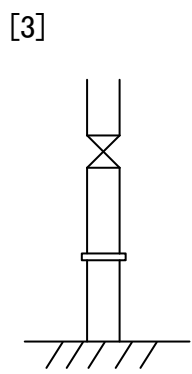
1F05RB004-00-01



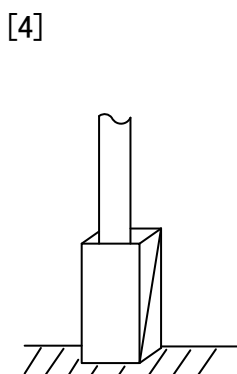
ウェル換気(東側)



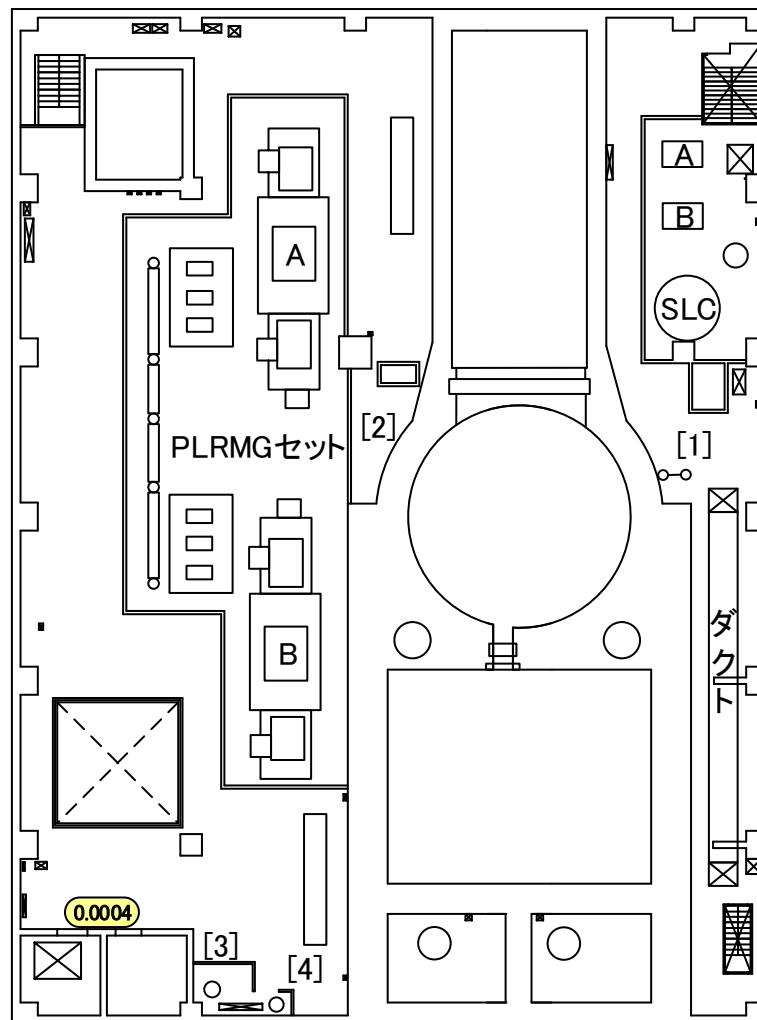
ウェル換気(西側)

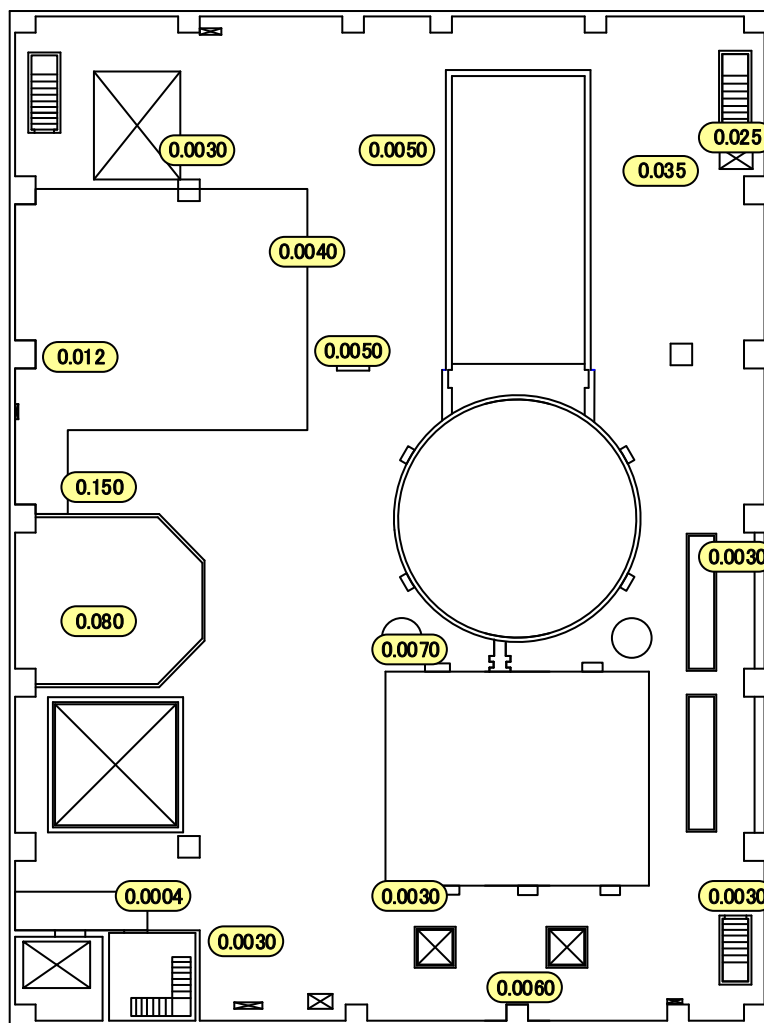


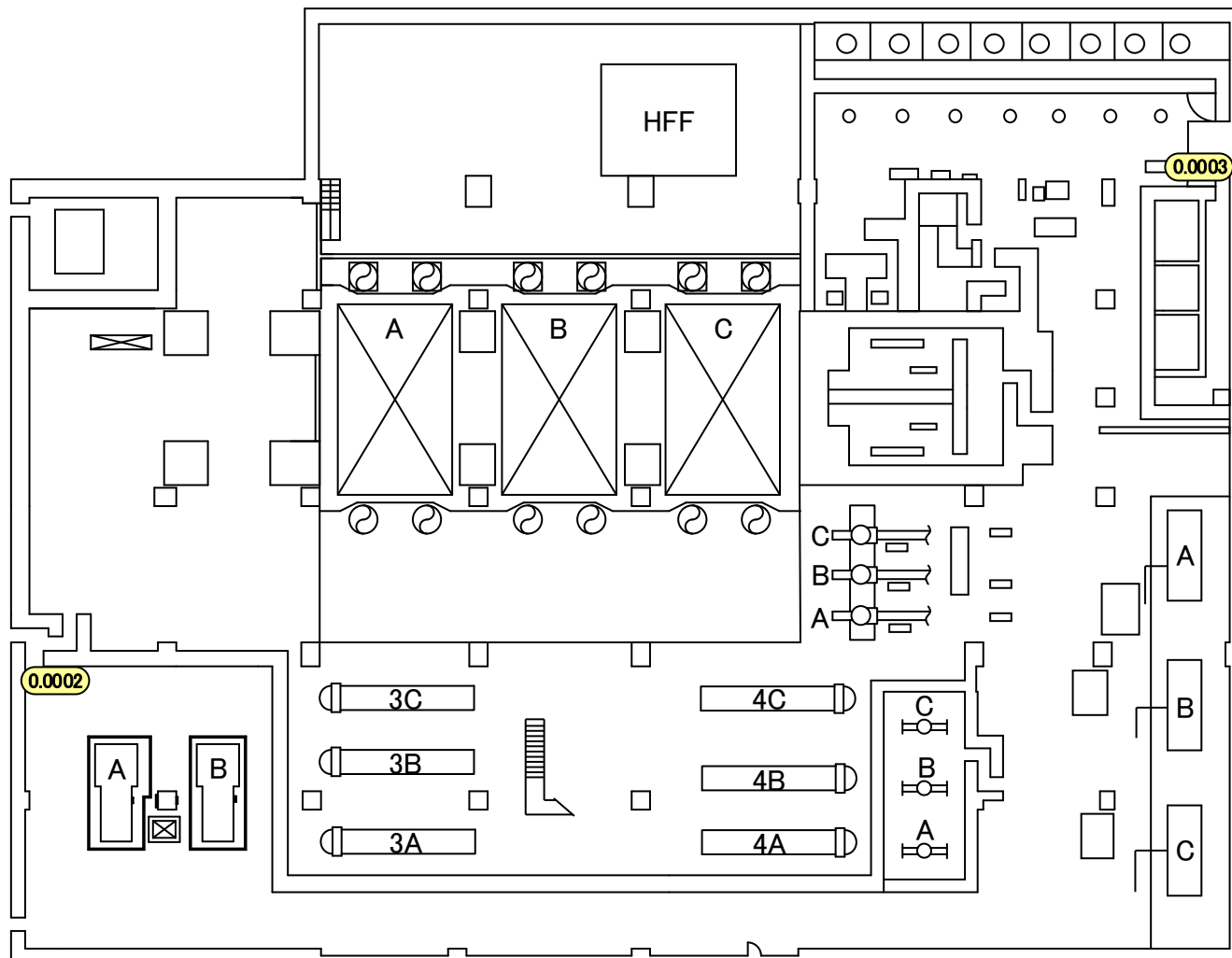
FPC-46

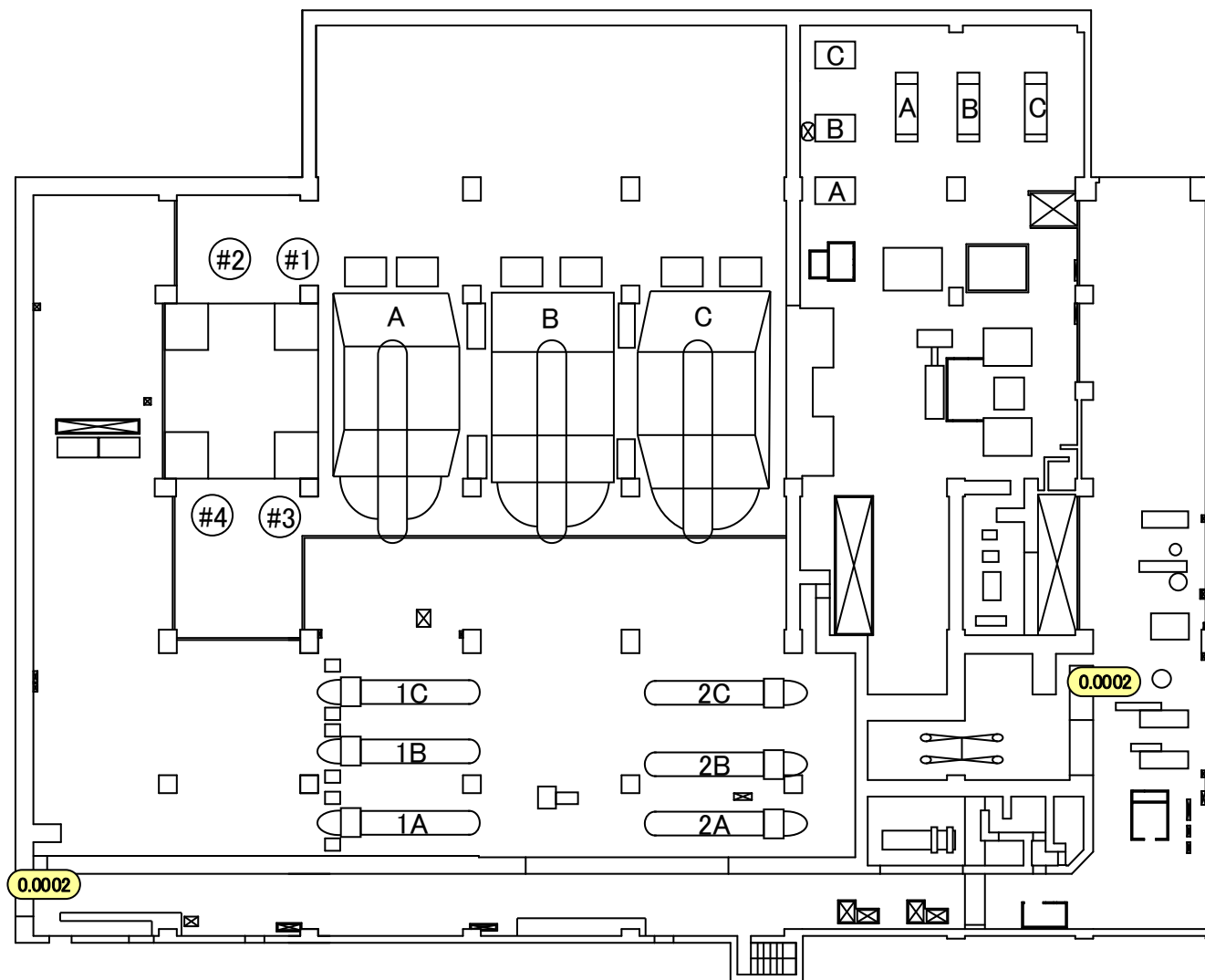


FPC-8

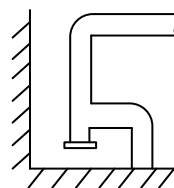




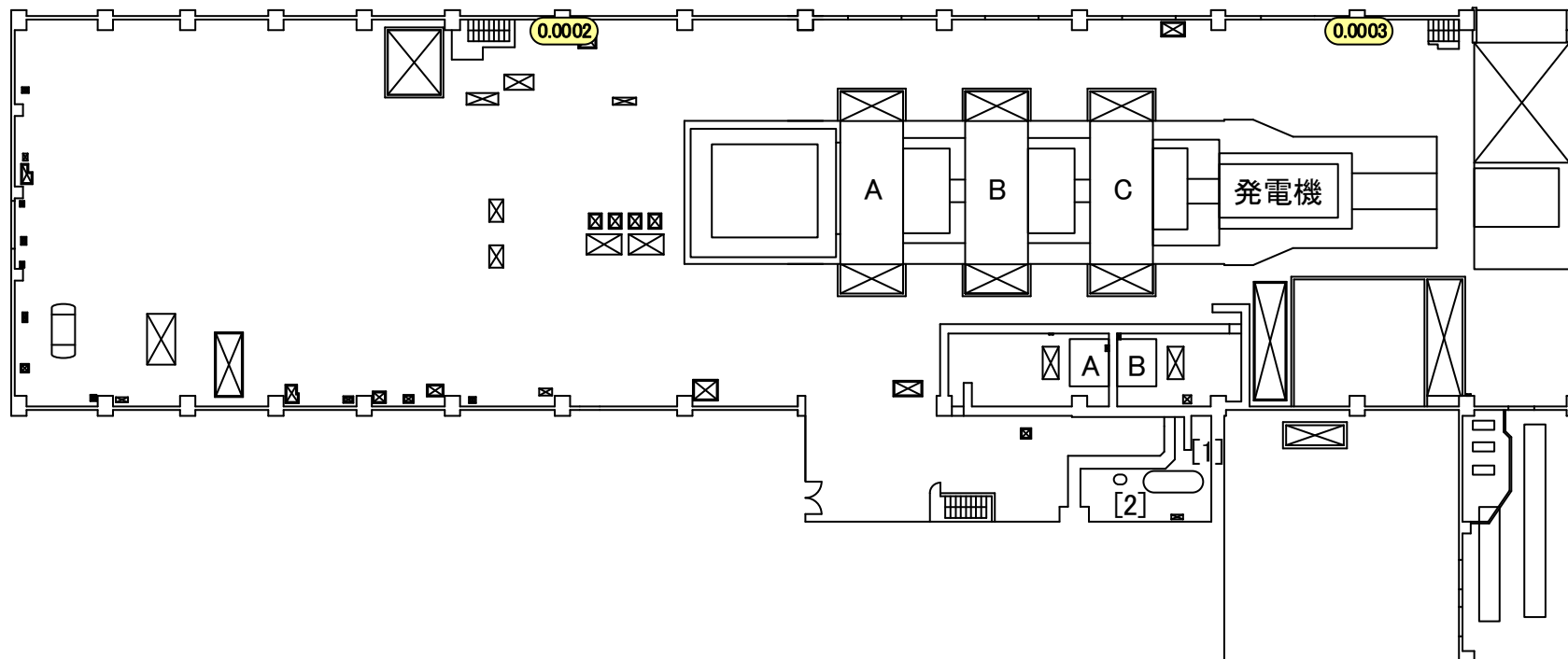
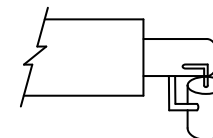


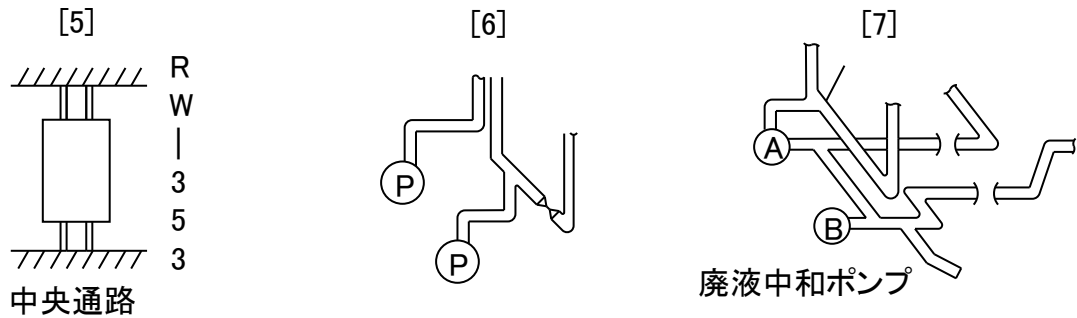
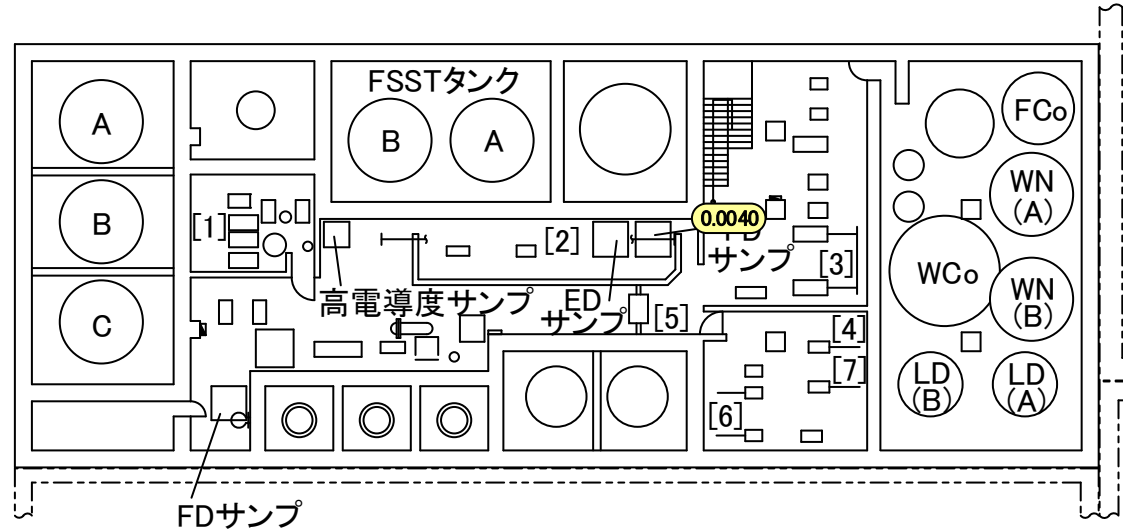
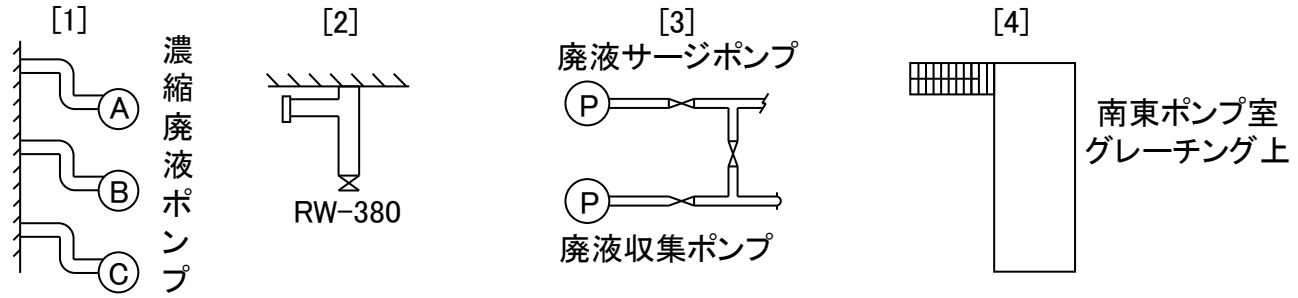


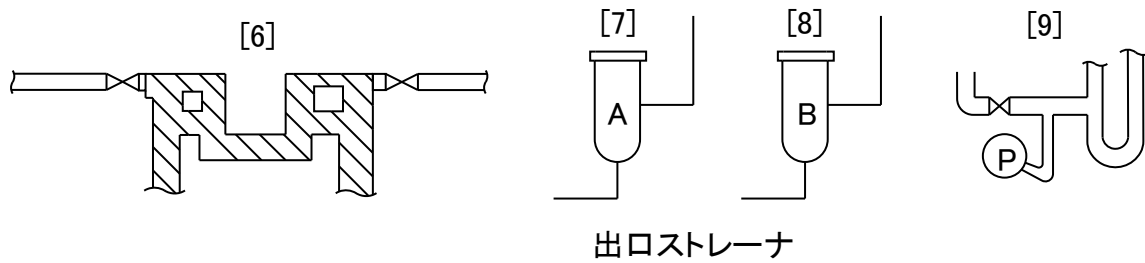
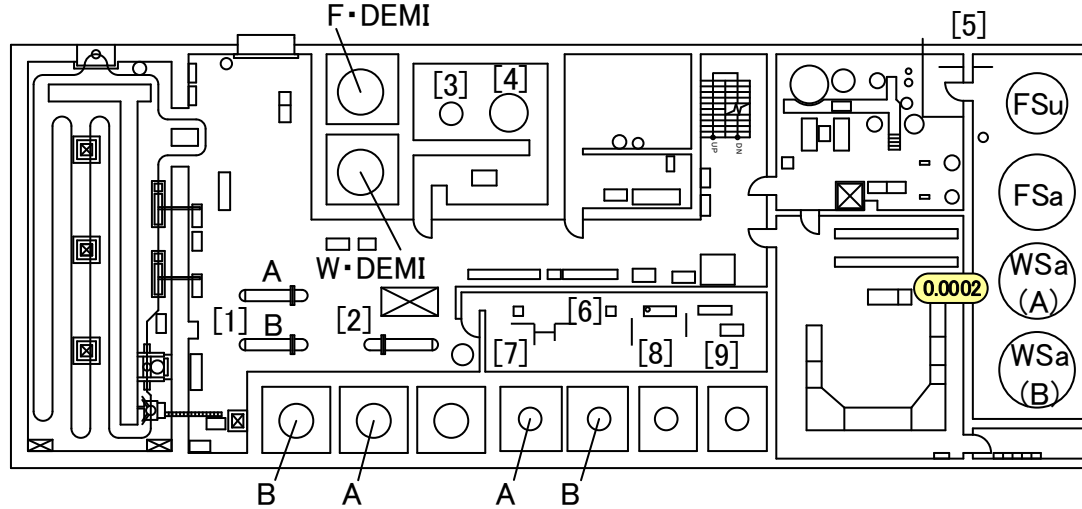
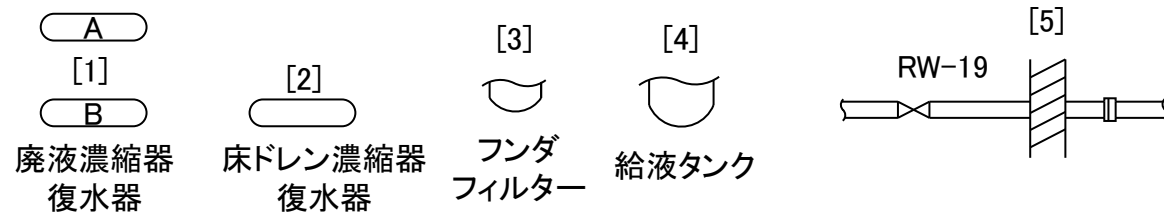
[1]
AS-23

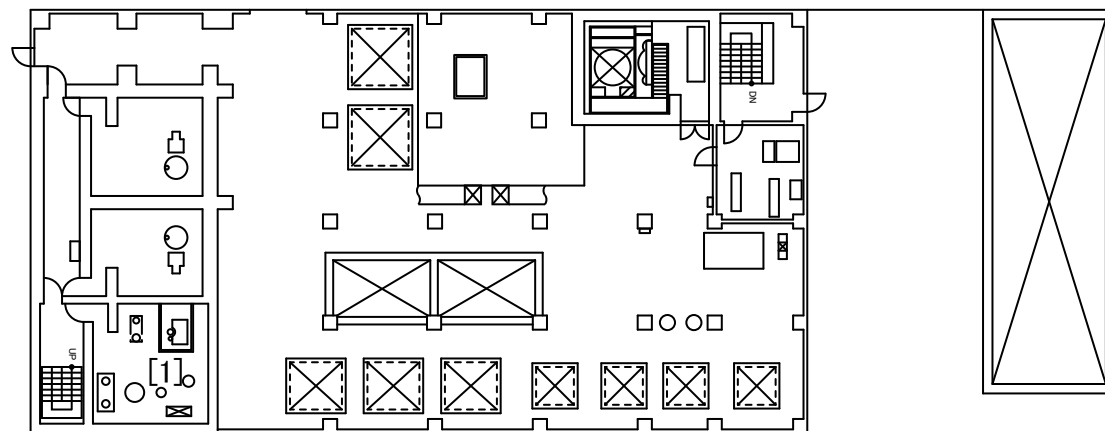


[2]
エバポレータ









[1]



濃縮廃液計量タンク

福島第一 原子力発電所

図面名称:

5号機 廃棄物処理建屋 3階

[単位: mSv/h]

