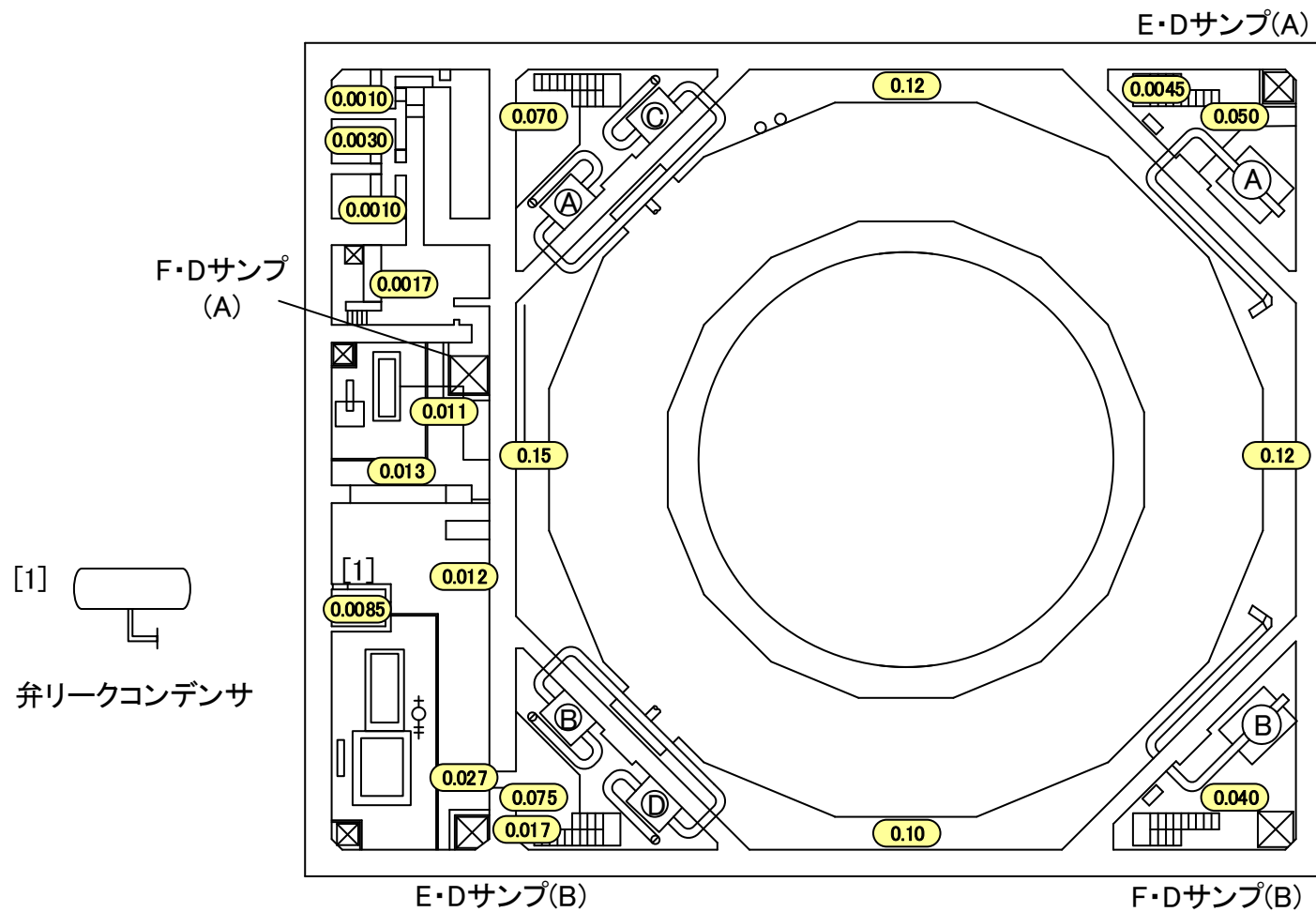


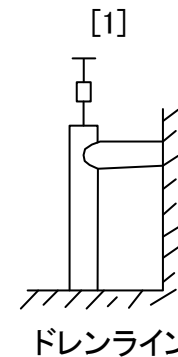
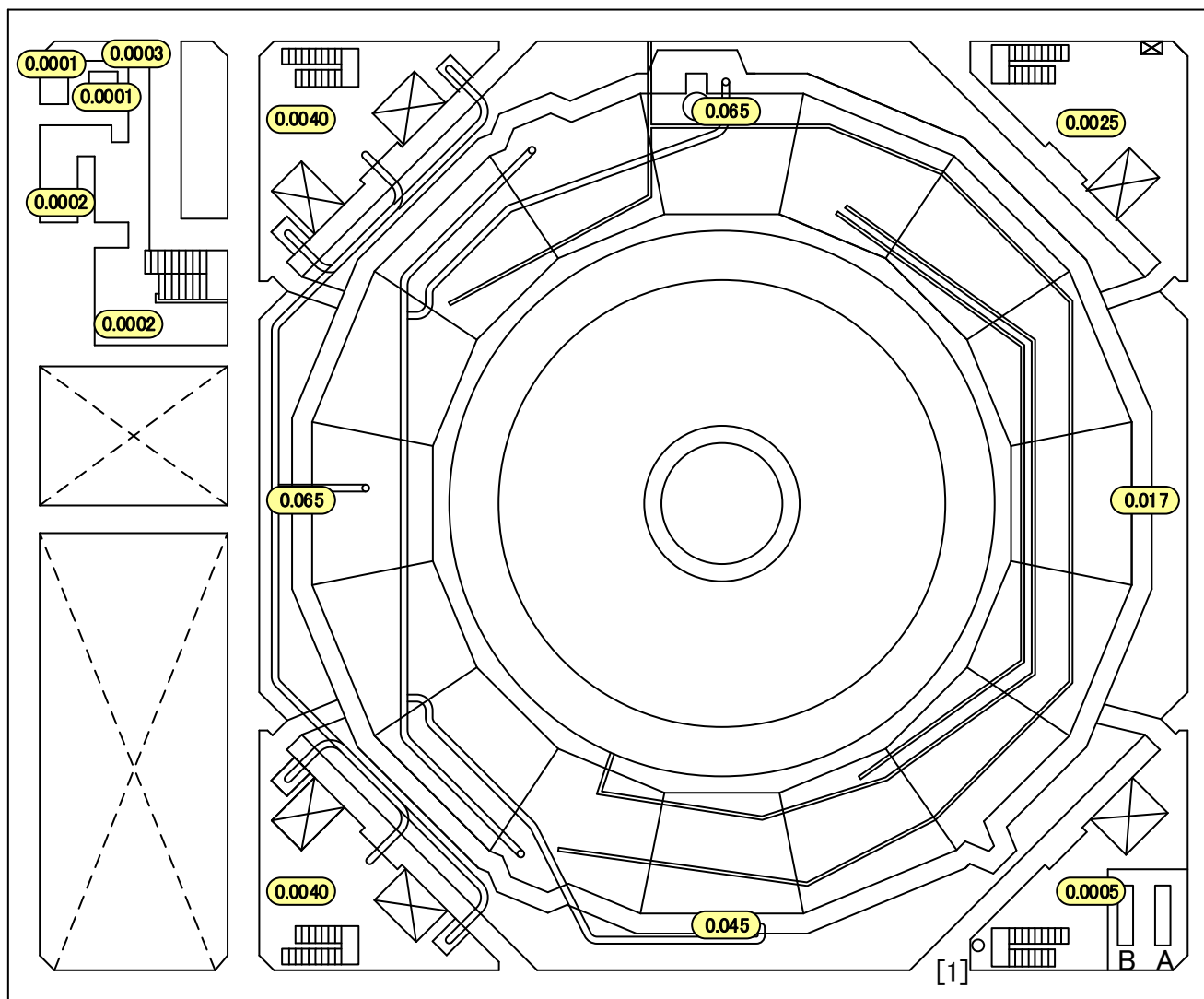
2016年2月29日
東京電力株式会社

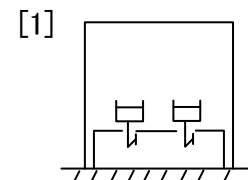
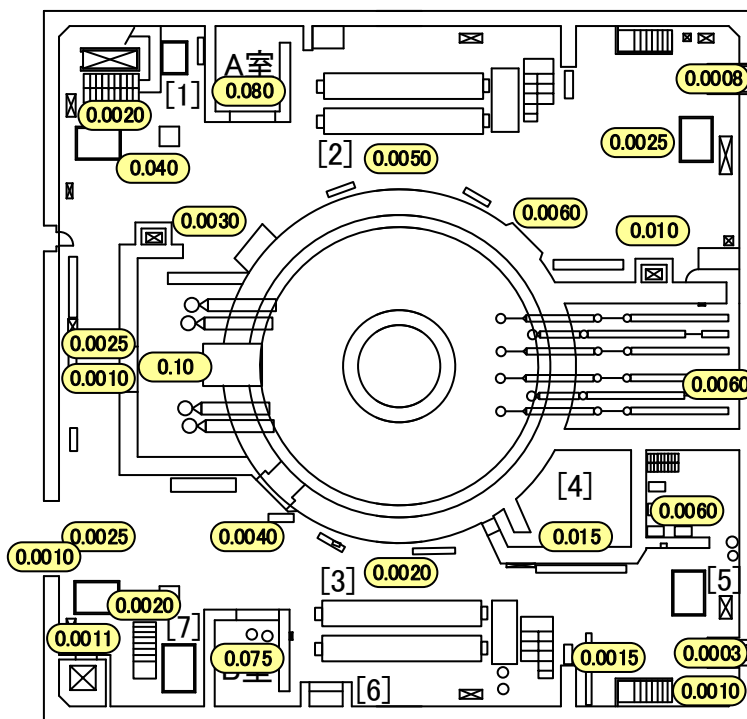
建屋内の空間線量率について

データ採取期間

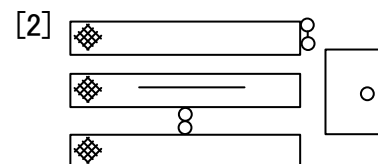
- ・ 5号機 : 2015年12月1日～2015年12月31日



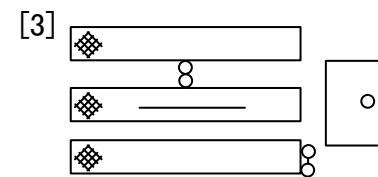




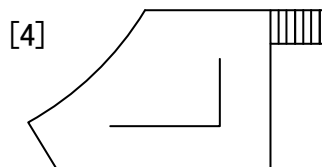
サンプリングラック



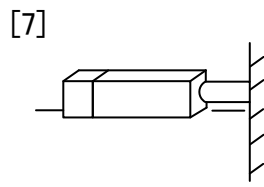
北側HCUグレーチング上



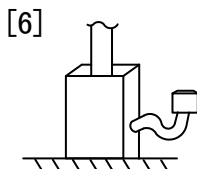
南側HCUグレーチング上



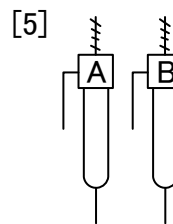
TIP機器室上部



しゃへい体下部

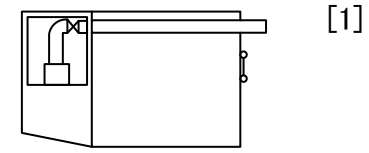
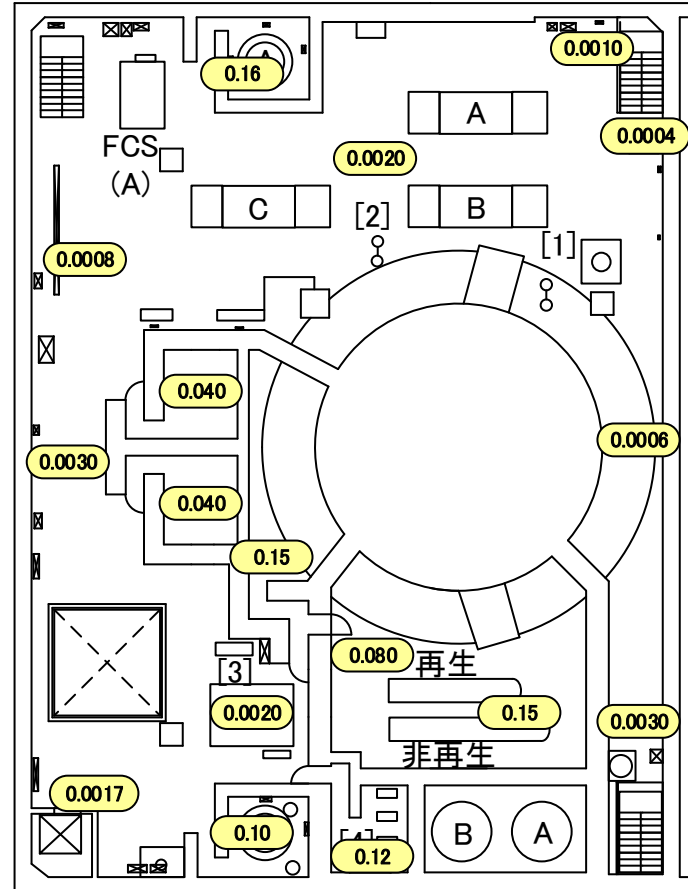


ドレンライン

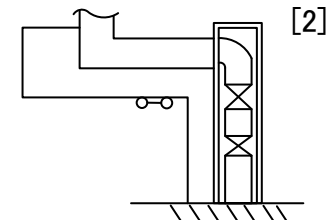


CRD吐出フィルター

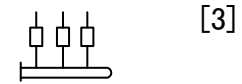
[7] [6] [5] [4]



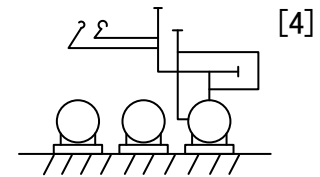
[1]
北東側グレーチング上



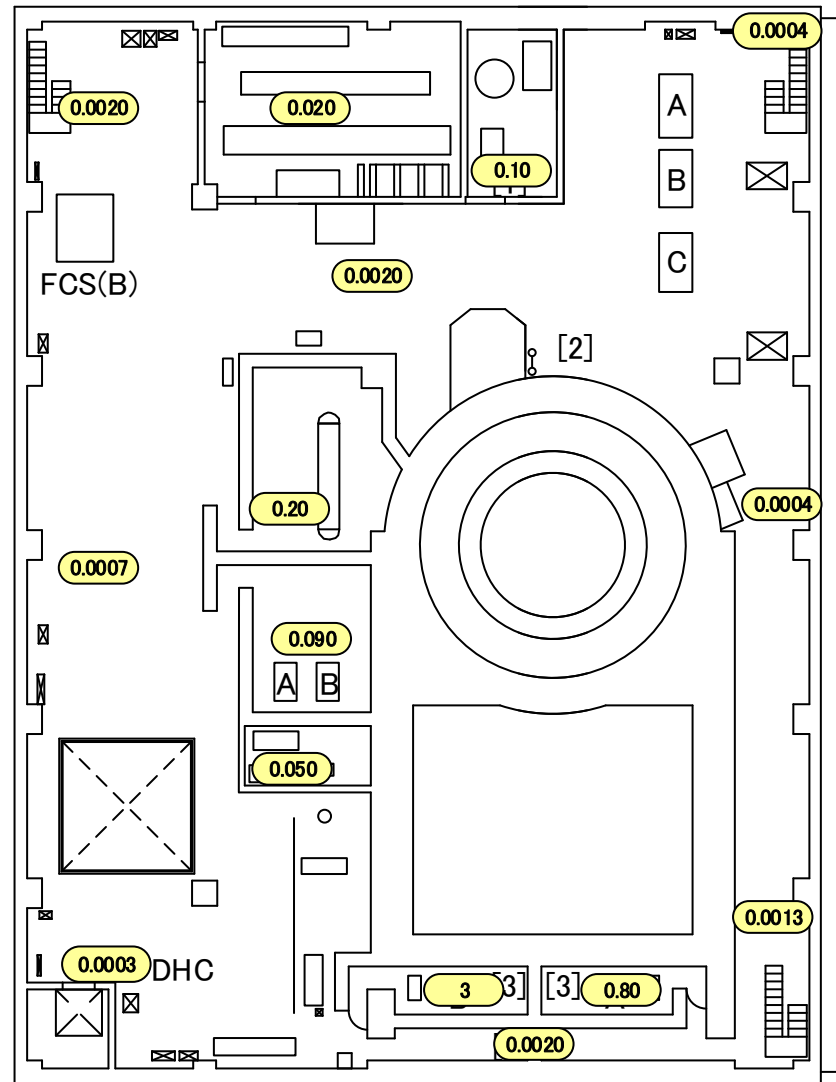
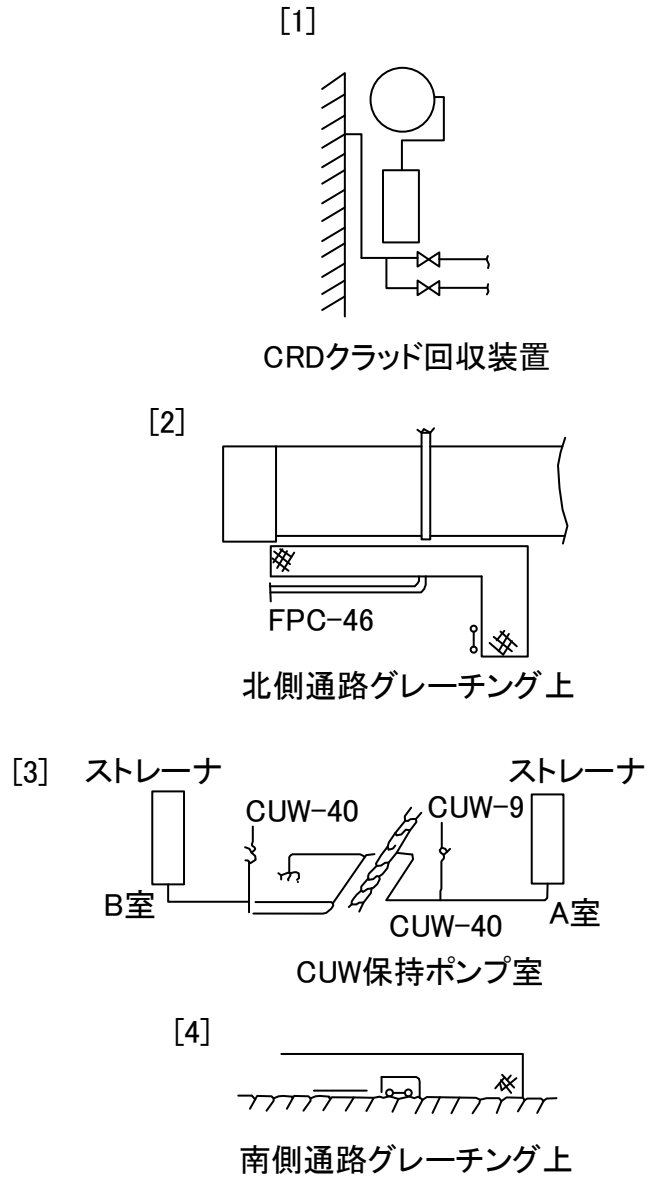
[2]
北側グレーチング上



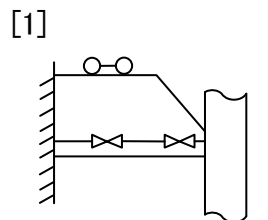
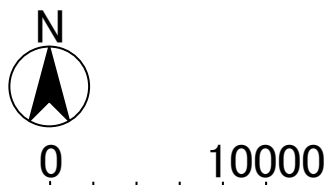
[3]
計装ラック下部



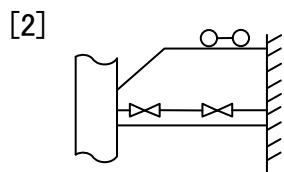
[4]
スラッジ放出混合ポンプ



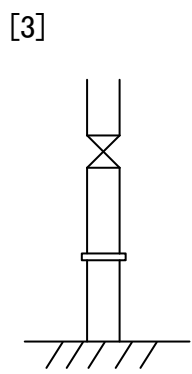
1F05RB004-00-01



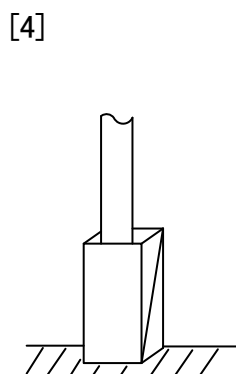
ウェル換気(東側)



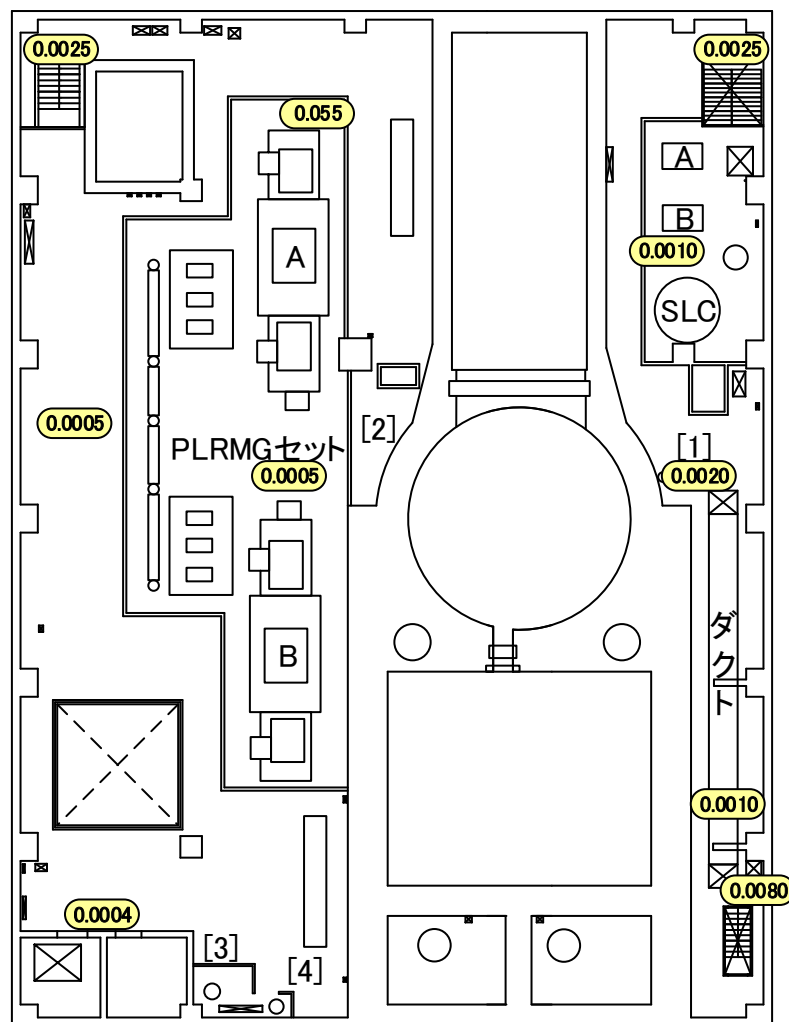
ウェル換気(西側)

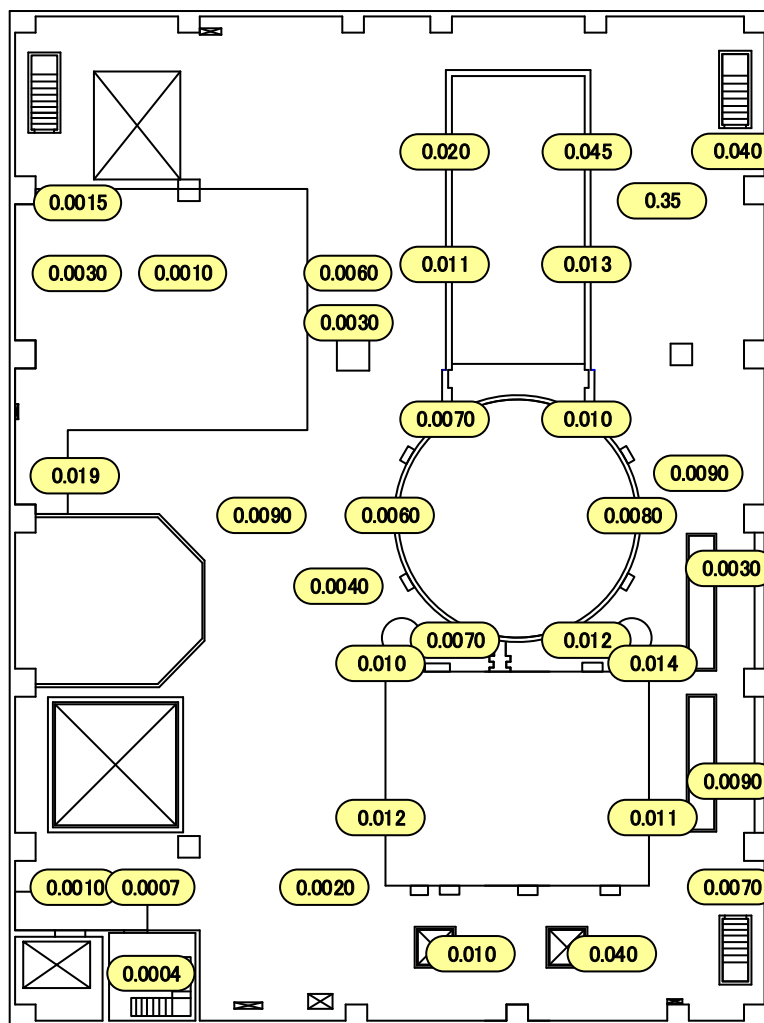


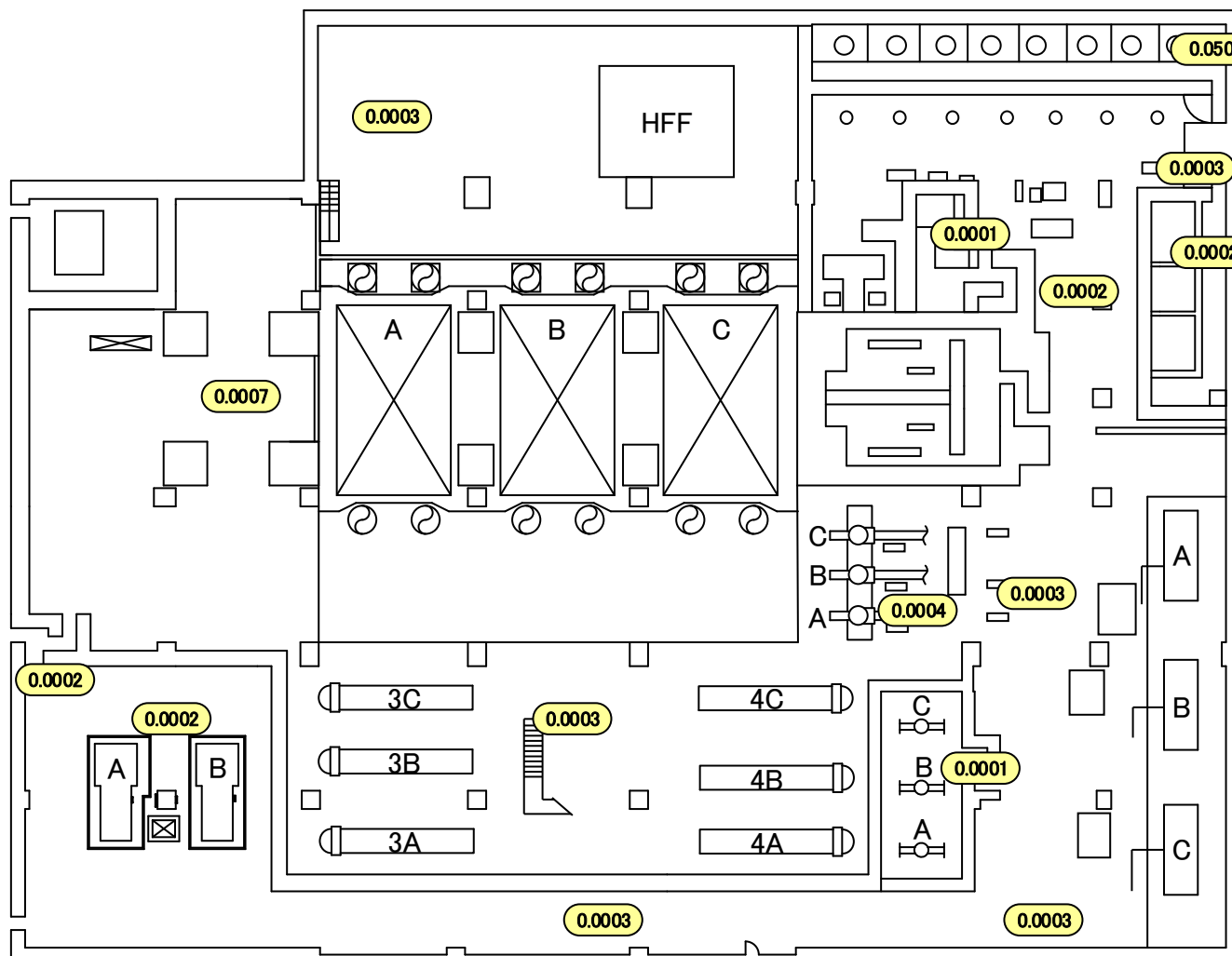
FPC-46

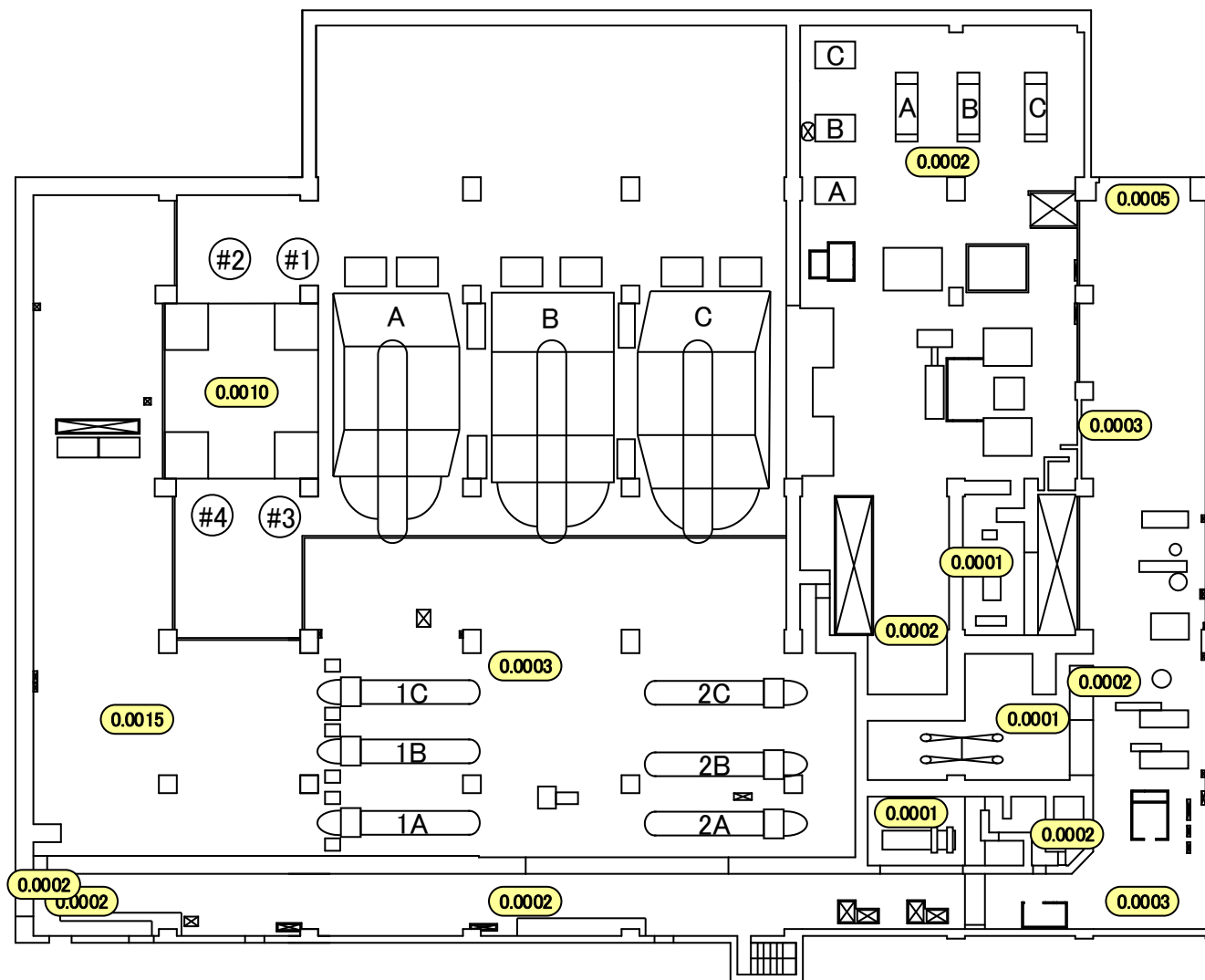


FPC-8



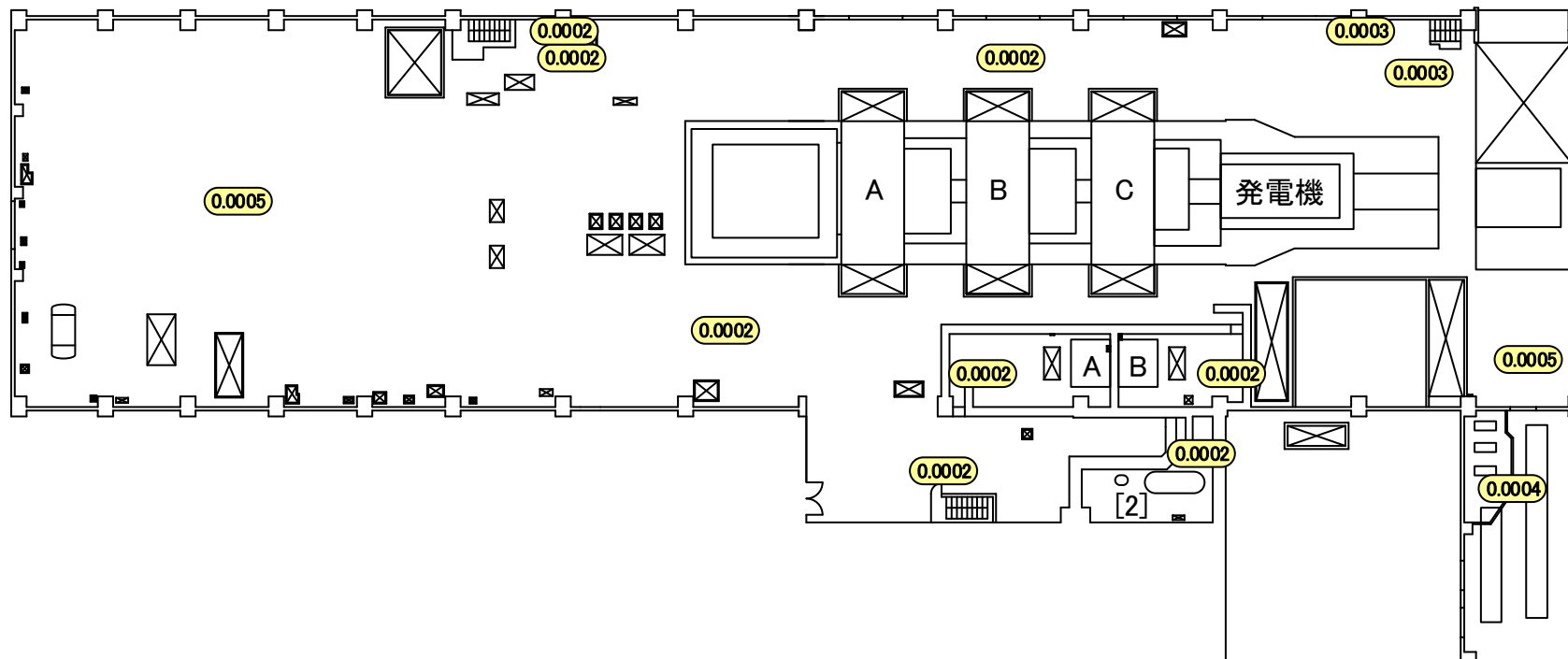
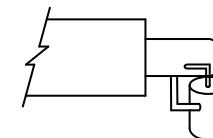
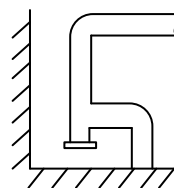


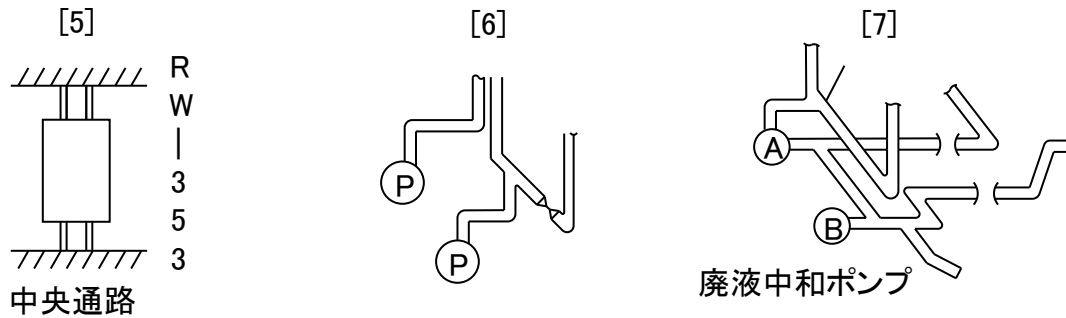
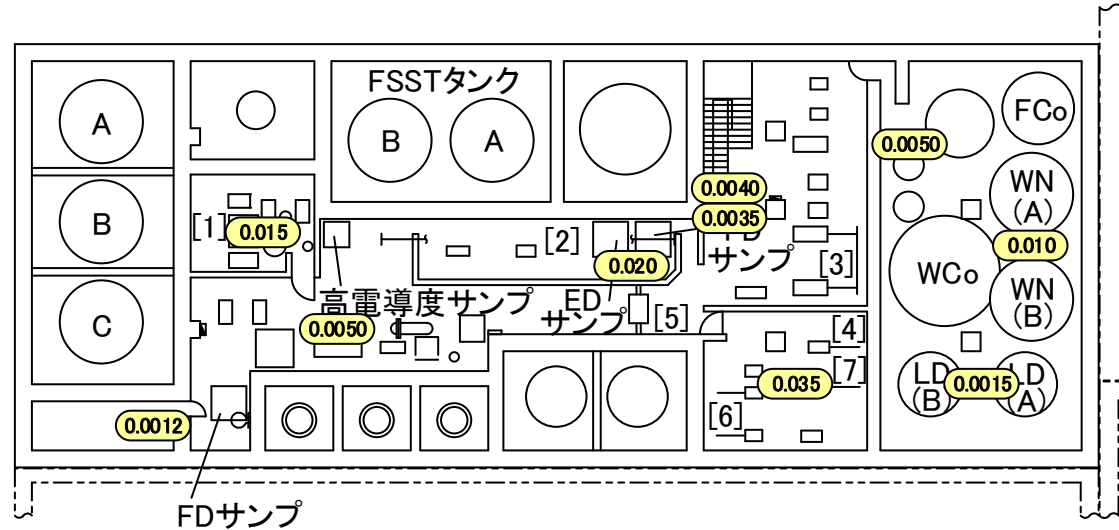
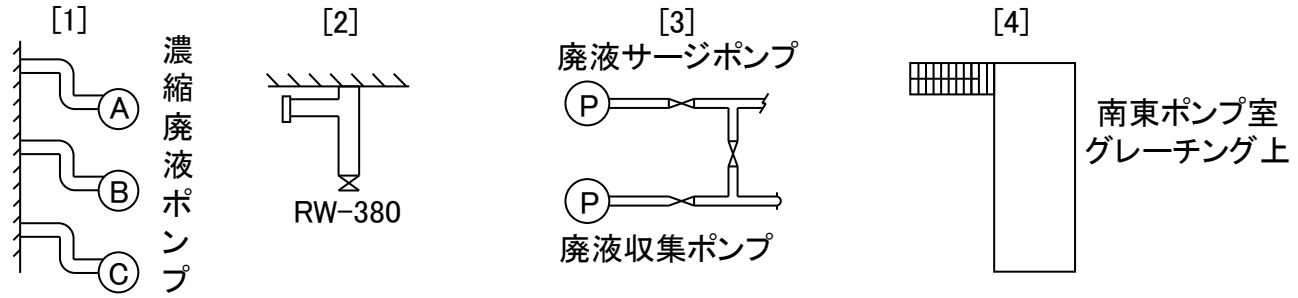


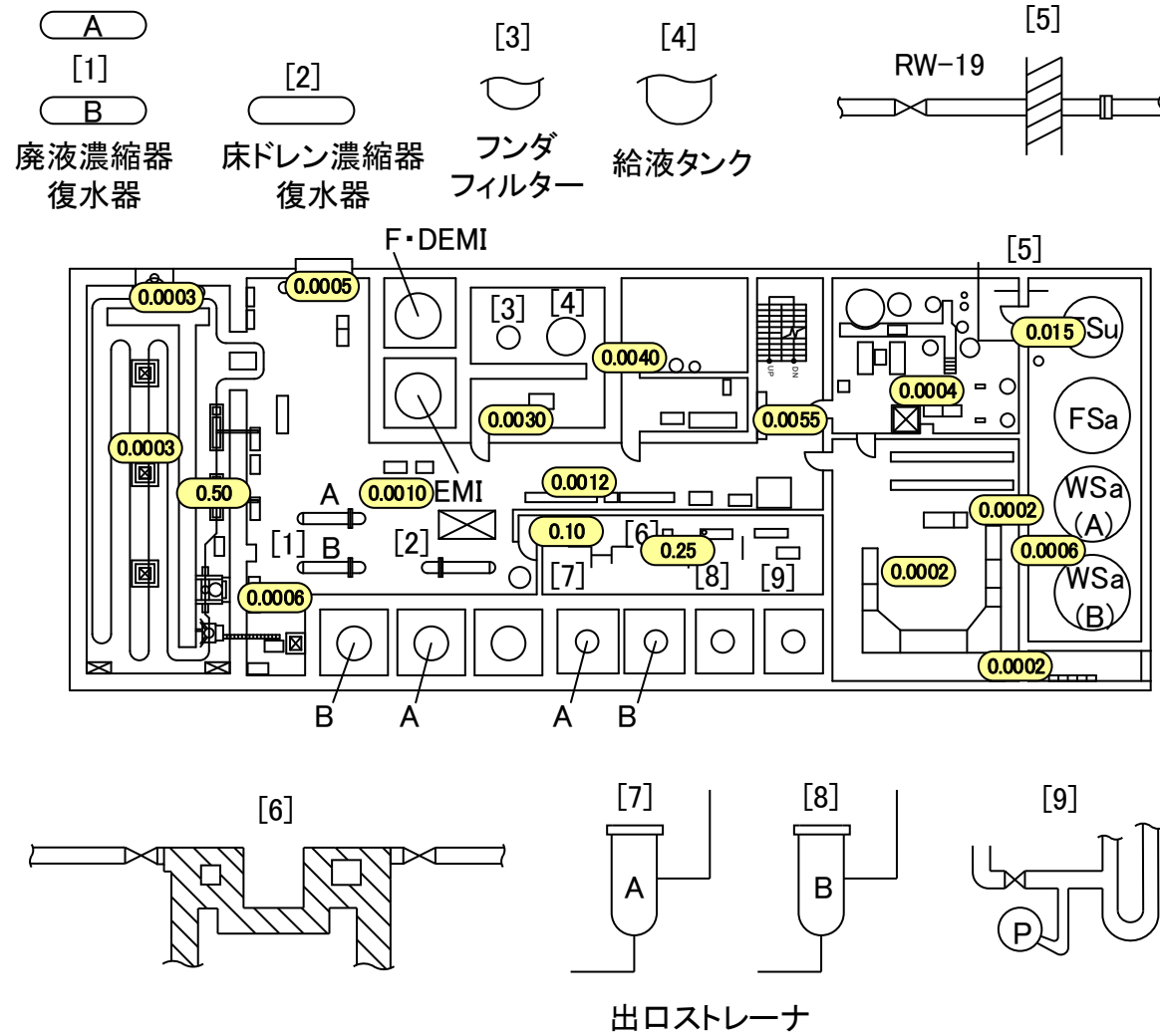


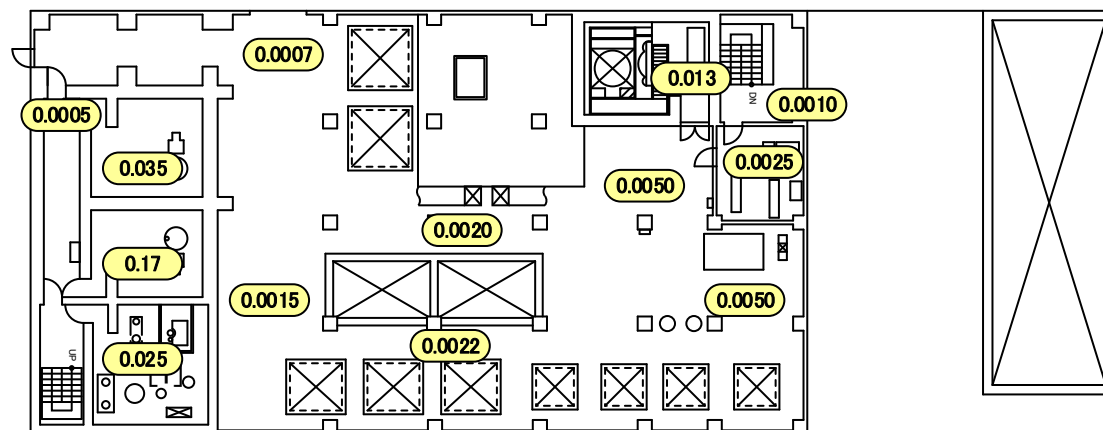
[1]
AS-23

[2]
エバポレータ









[1]



濃縮廃液計量タンク

